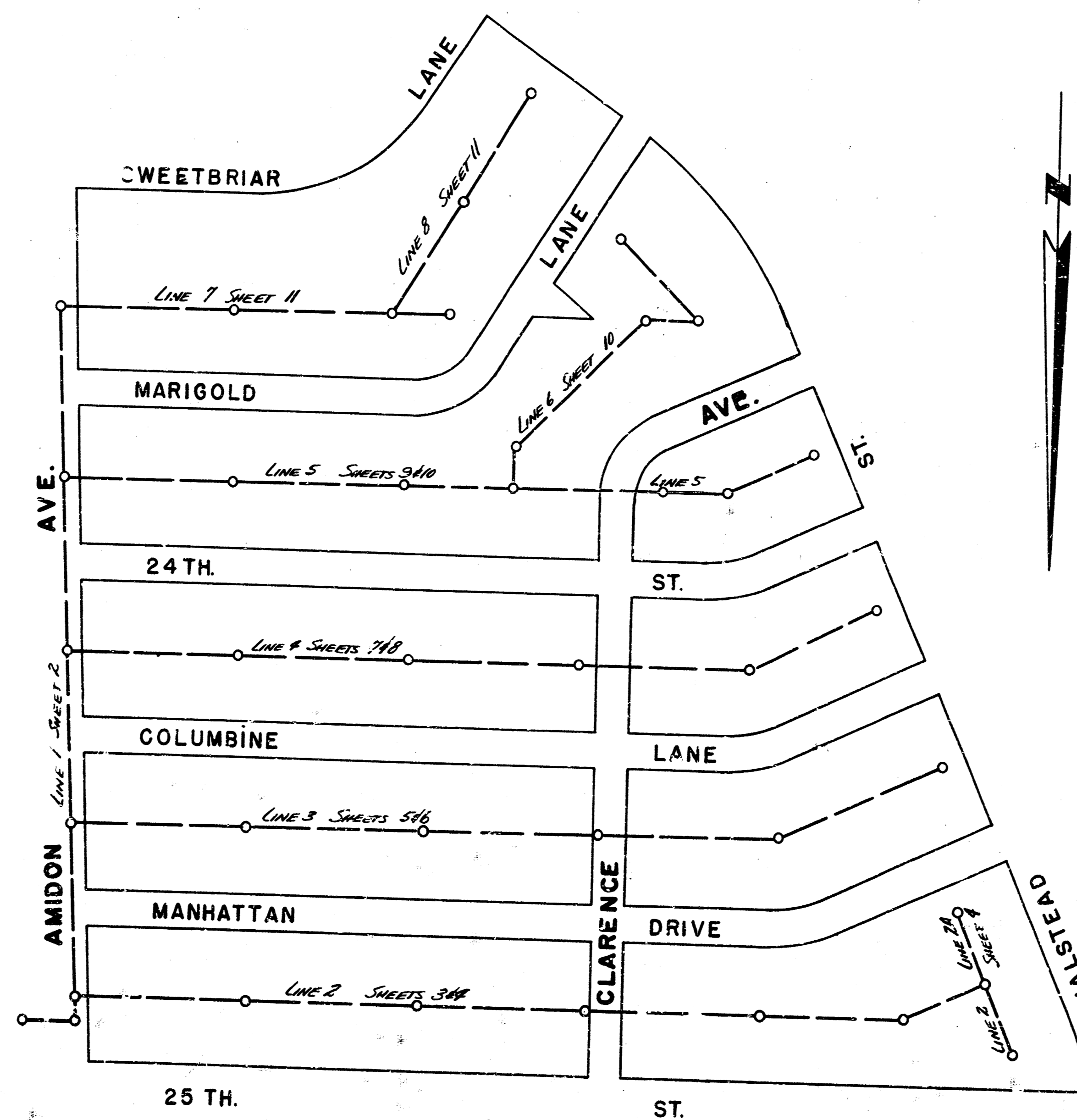


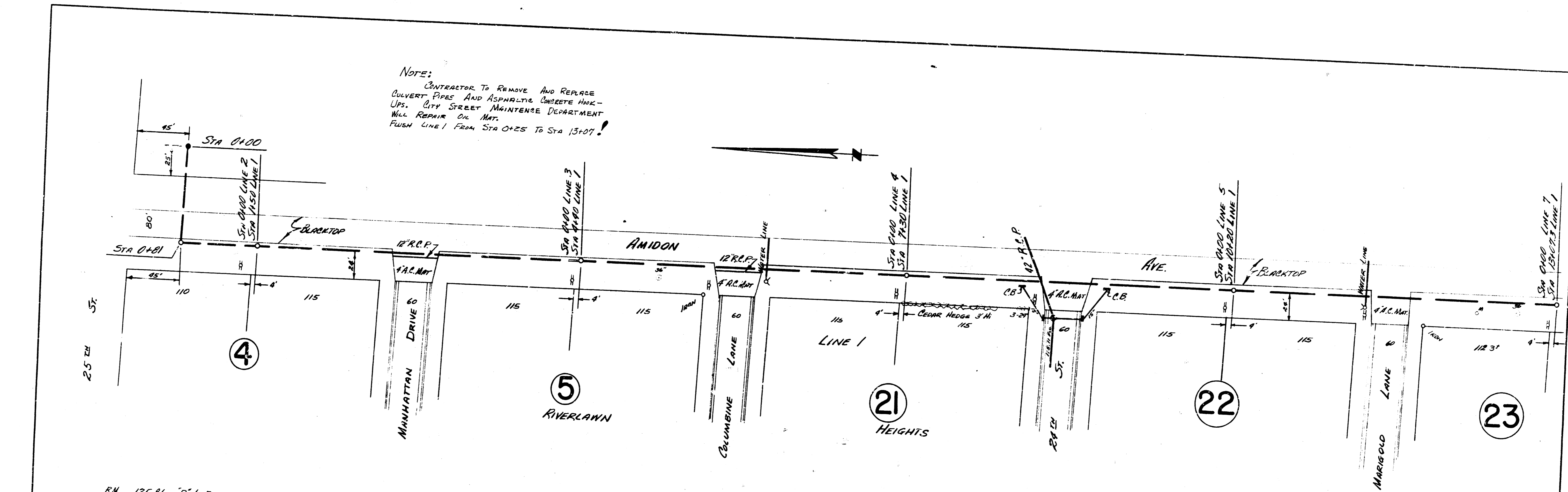
LOCATION MAP
 LAT. 27 SAN. SEWER 22
 CITY OF WICHITA
 B.E. SMITH CITY ENGINEER PROJECT NO. C25-104

SURVEY BY: C.H. MILLS BOOK C.H.M. 105
 DRAWN BY: T. DEWEY
 CHECKED BY: D.M.E.



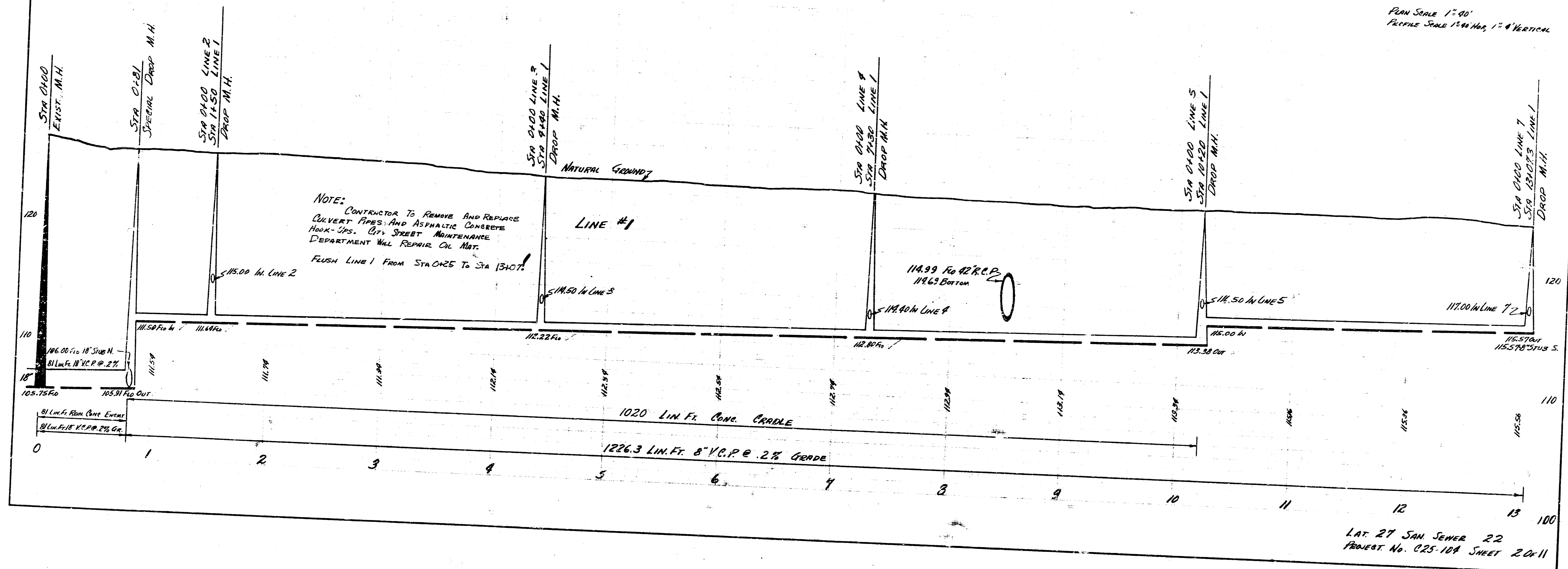
B.E. Smith
 City Engineer
 4/25/52

NOTE:
 CONTRACTOR TO REMOVE AND REPLACE
 CULVERT PIPES AND ASPHALTIC CONCRETE H.W.
 U.P.S. CITY STREET MAINTENANCE DEPARTMENT
 WILL REPAIR ON MAT.
 FUSH LINE 1 FROM STA 0225 TO STA 13107!

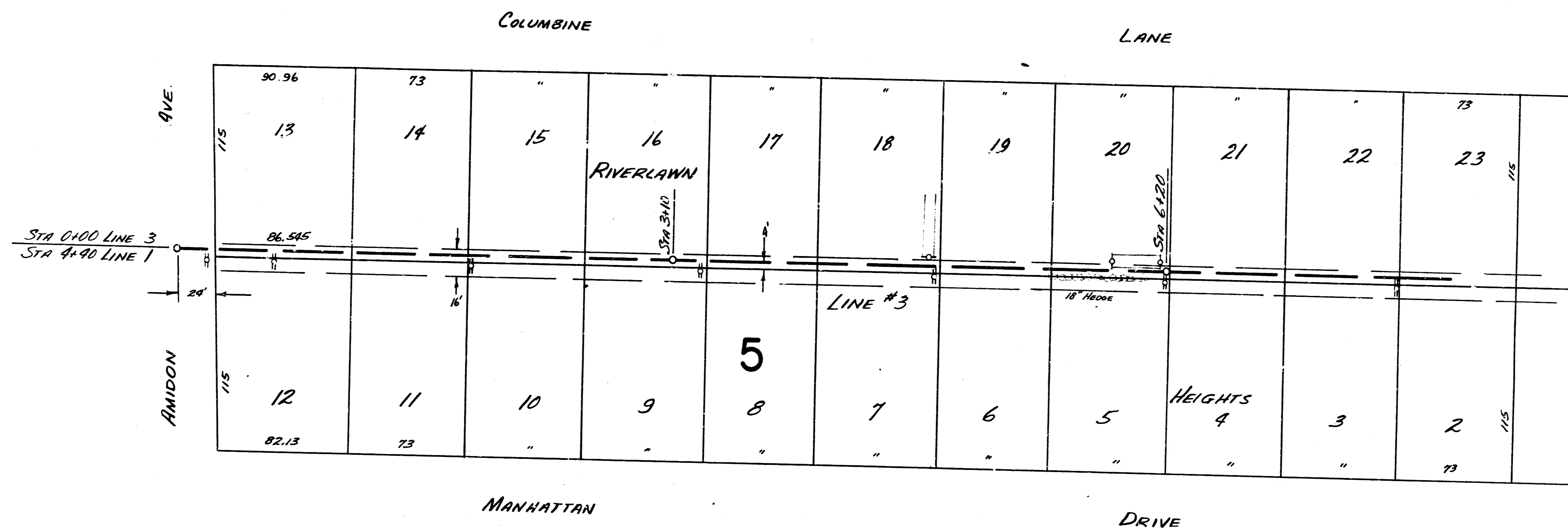


B.M. 125.86 "R" IN RITZLIE E. END S. CR. MARIGOLD-W.L. AMIDON
 B.M. 126.99 DOUBLE SPIKE W.S. TEE. PVE. W.S. AMIDON 115' N. N.L. COLUMBINE
 B.M. 127.23 STANDARD S.E. AMIDON # 2328

PLAN SCALE 1"=40'
 PROFILE SCALE 1"=4' VERTICAL



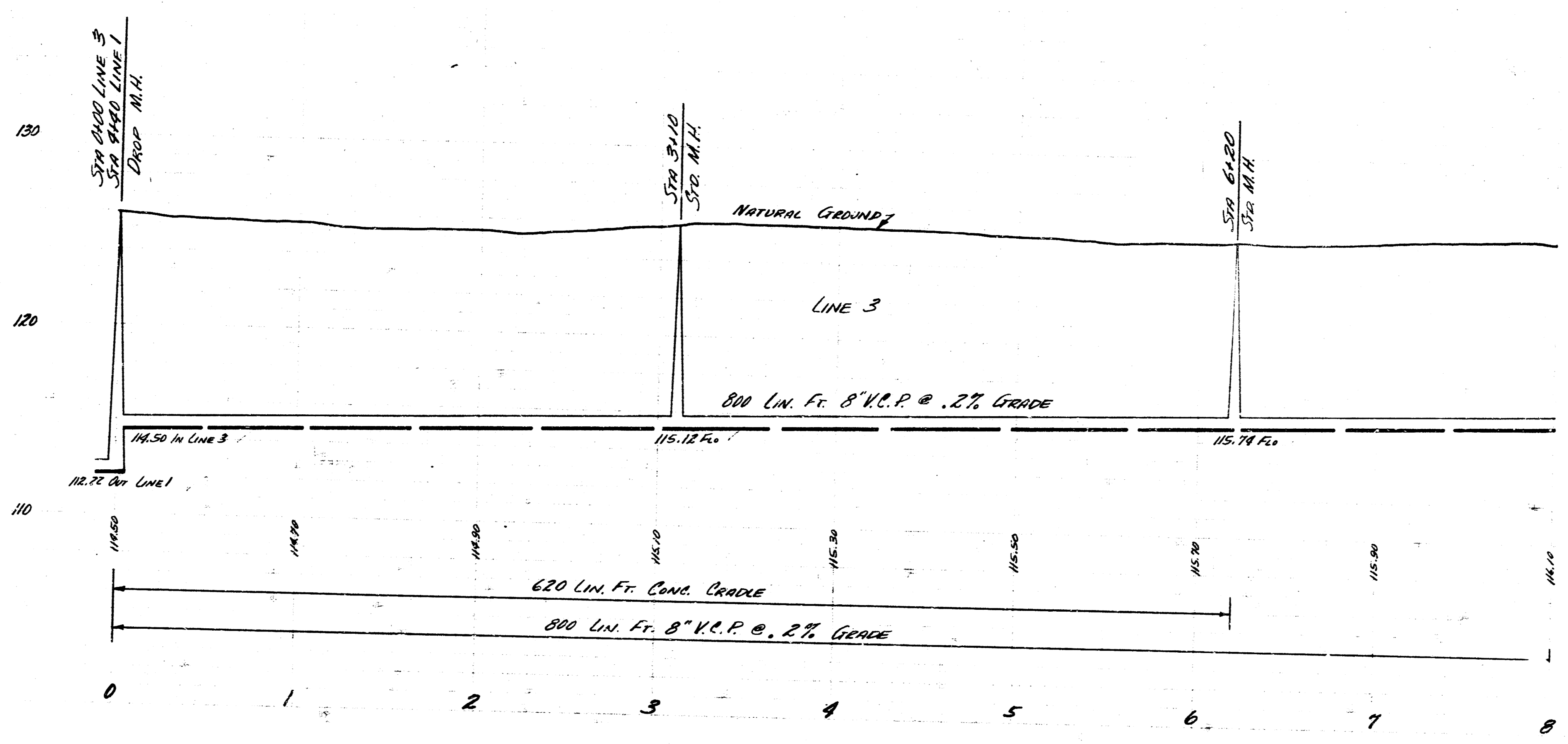
NOTE:
 CONTRACTOR TO REMOVE AND REPLACE
 CULVERT PIPES AND ASPHALTIC CONCRETE
 H.W. U.P.S. CITY STREET MAINTENANCE
 DEPARTMENT WILL REPAIR ON MAT.
 FUSH LINE 1 FROM STA 0225 TO STA 13107!



NOTE:
BOTH PLAN & PROFILE CONTINUED
AT STA 8+00 ON SHEET 6.

B.M. 126.99 DOUBLE SPIKE, N.S. TEL. POLE, N.S. AMIDON, 115' N. OF N.L. COLUMBINE

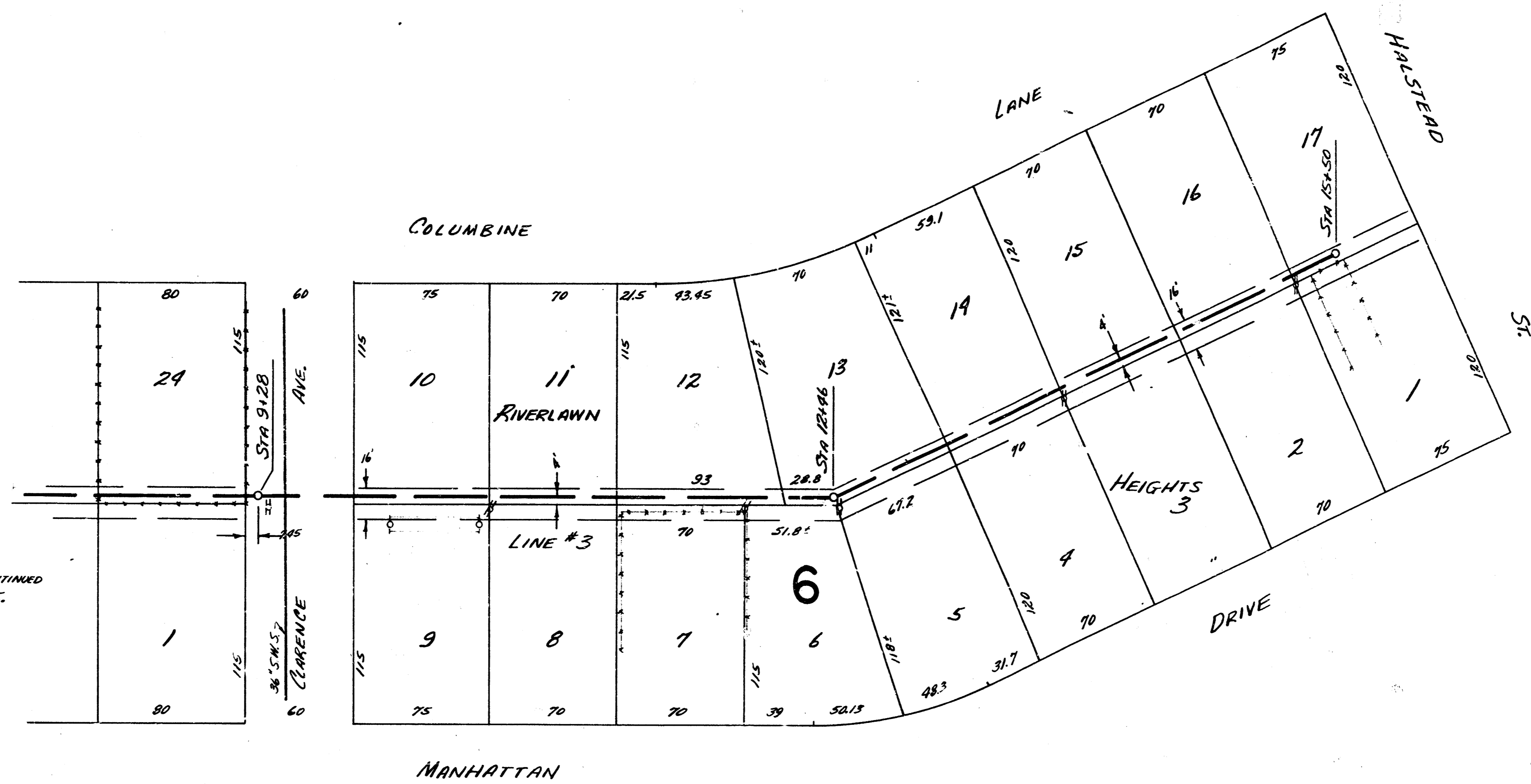
PLAN SCALE 1"=40'
PROFILE SCALE 1"=40' HOR, 1"=4' VERTICAL



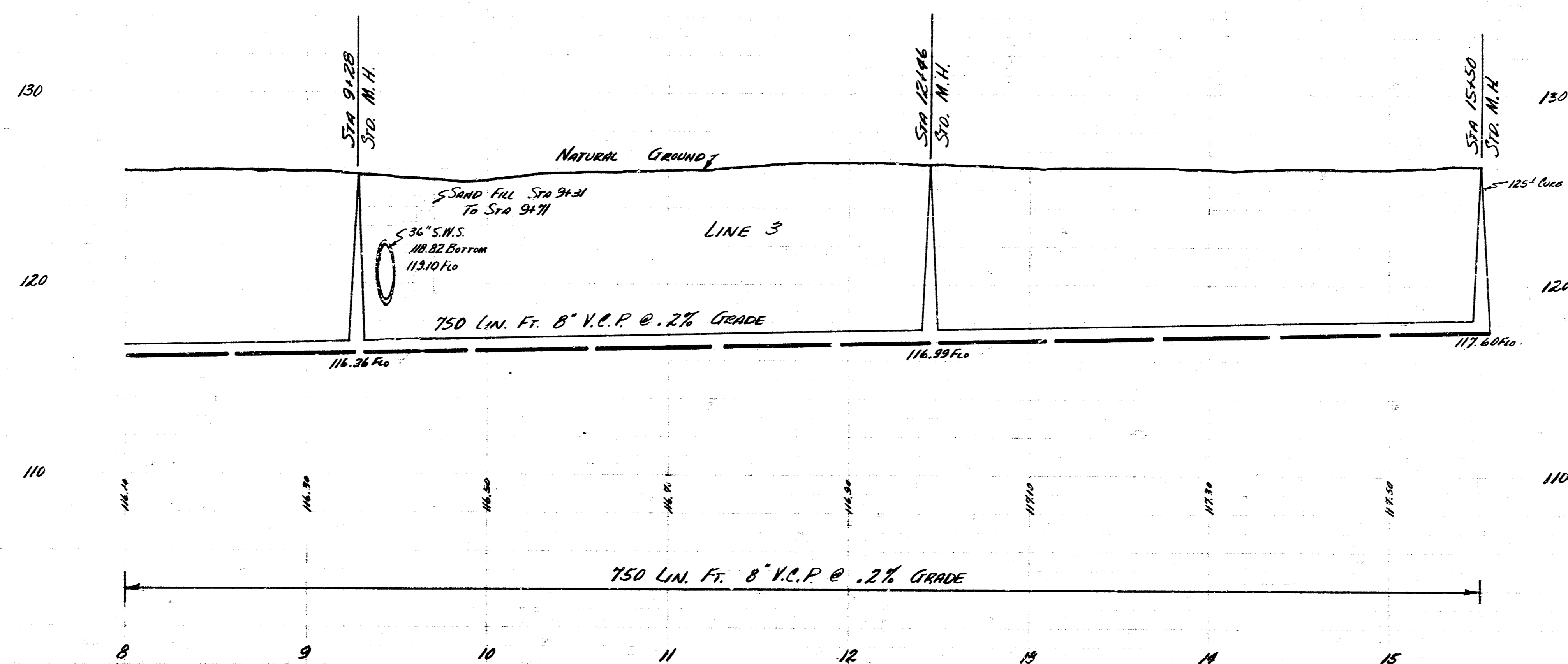
LAT. 27 SAN SEWER 22
PADD. No. C25-104 SHEET 5 OF 11



NOTE:
BOTH PLAN & PROFILE CONTINUED
FROM STA 8+00 ON SHEET 5.

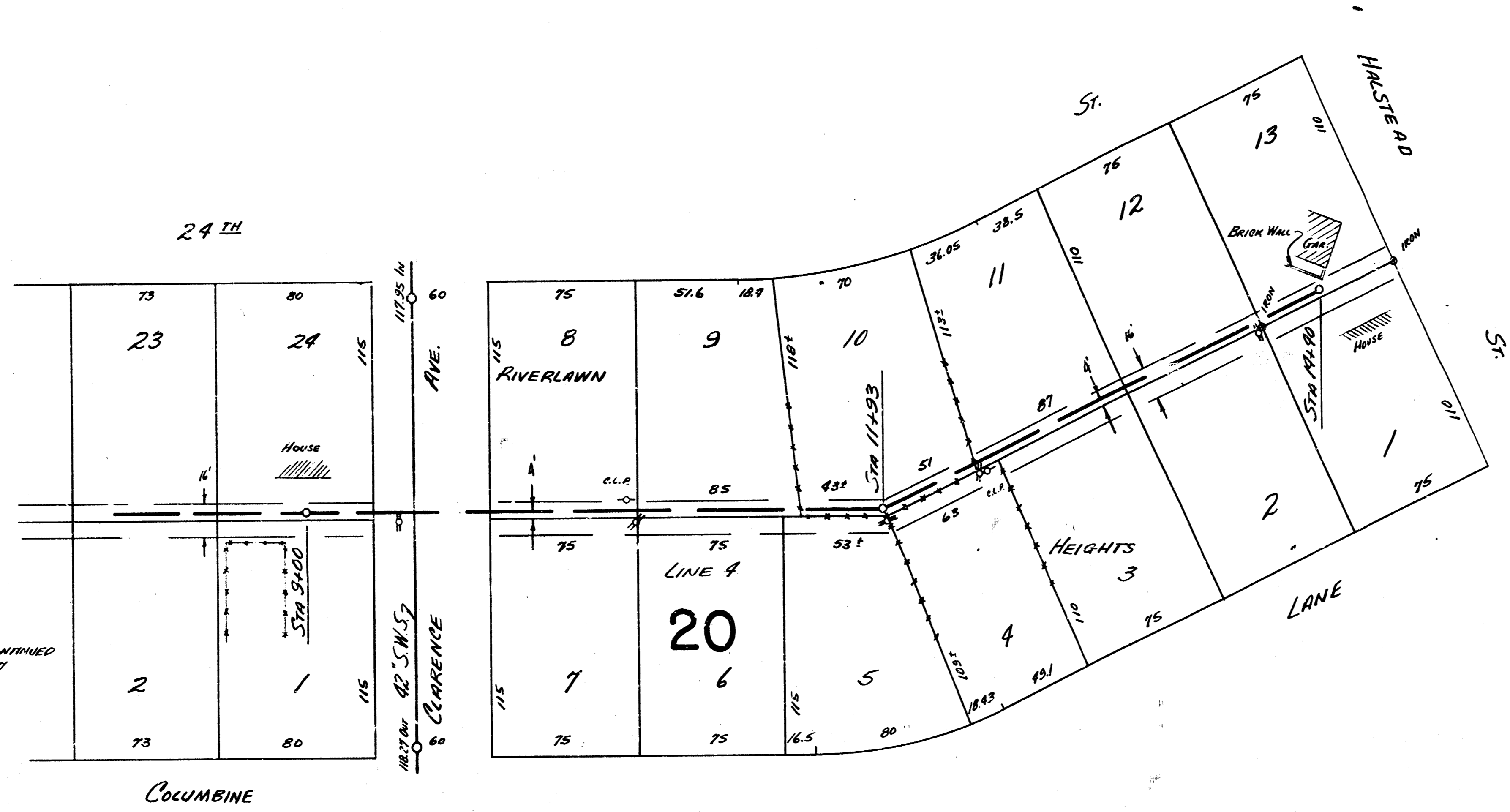


PLAN SCALE 1"=40'
PROFILE SCALE 1"=40' HOR, 1"=4' VERTICAL

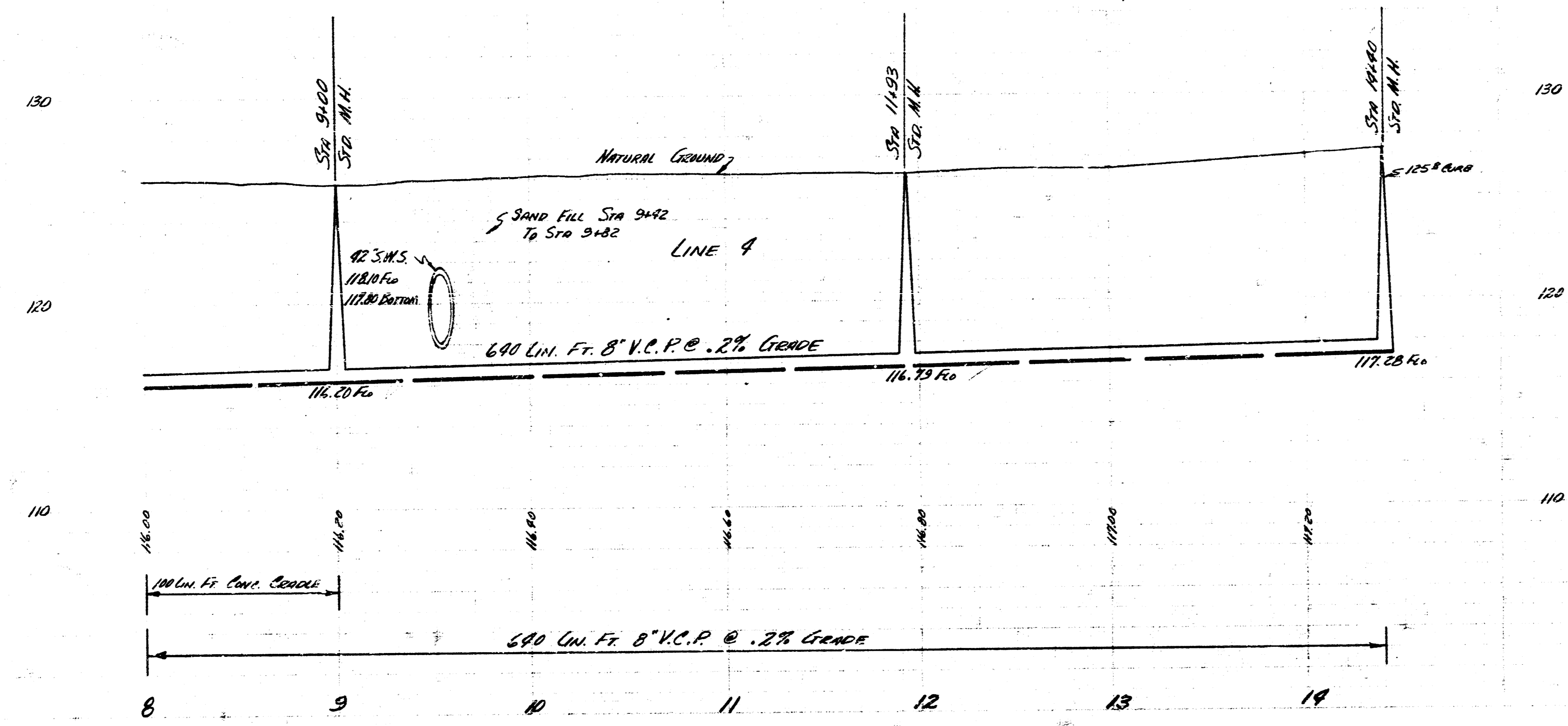


LAT. 21" S.W. SEWER 22
PROJ. NO. C25-109 SHEET 6 OF 11

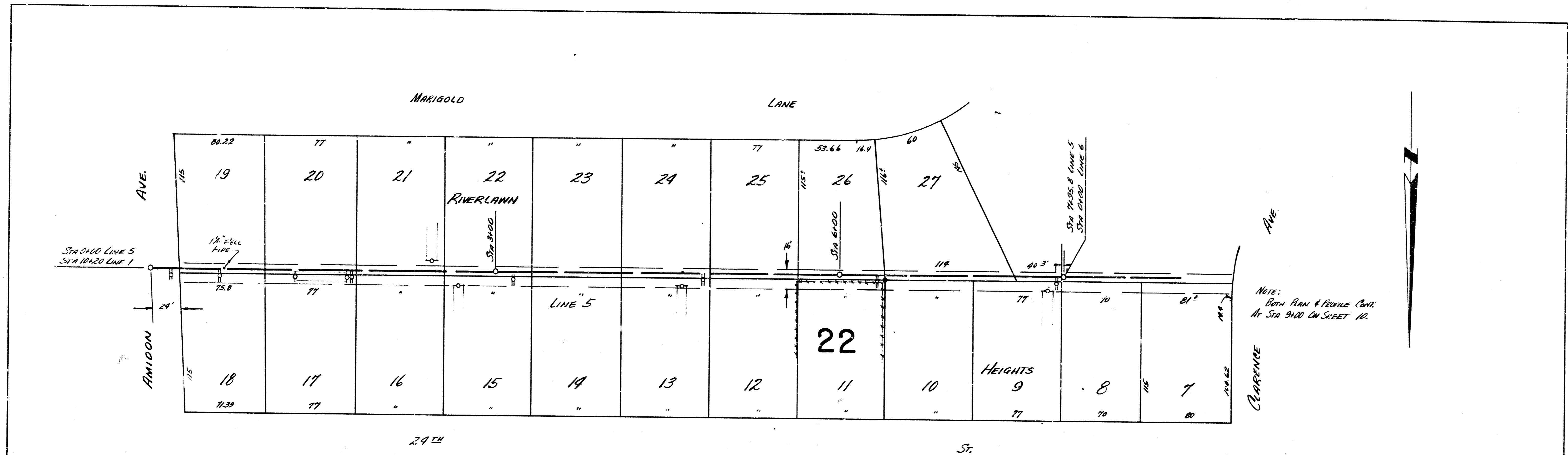
NOTE:
 BOTH PLAN & PROFILE CONTINUED
 FROM STA. 8100 ON SHEET 7



PLAN SCALE 1"=40'
 PROFILE SCALE 1"=40' HOR, 1"=4' VERTICAL

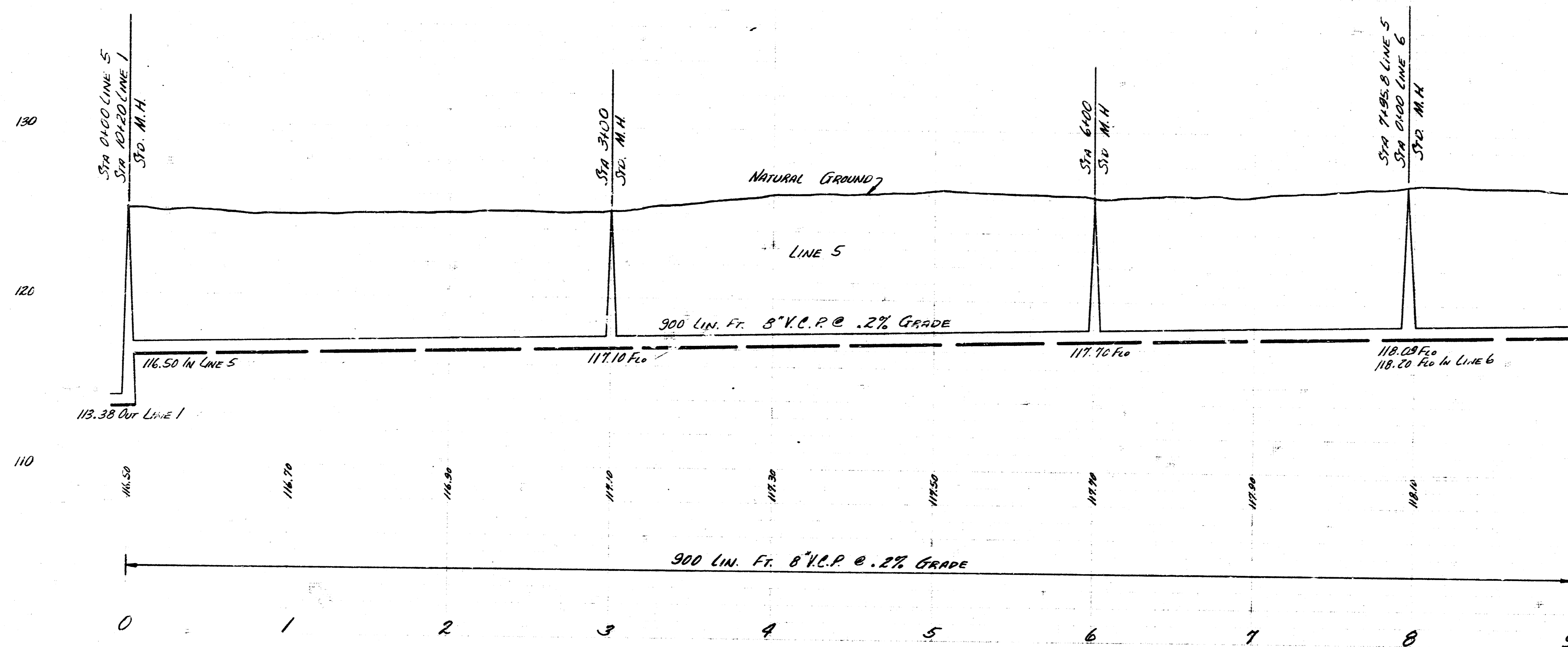


LAT. 27 SAN SEWER 22
 PROJ. NO. C25-104 SHEET 8 OF 11

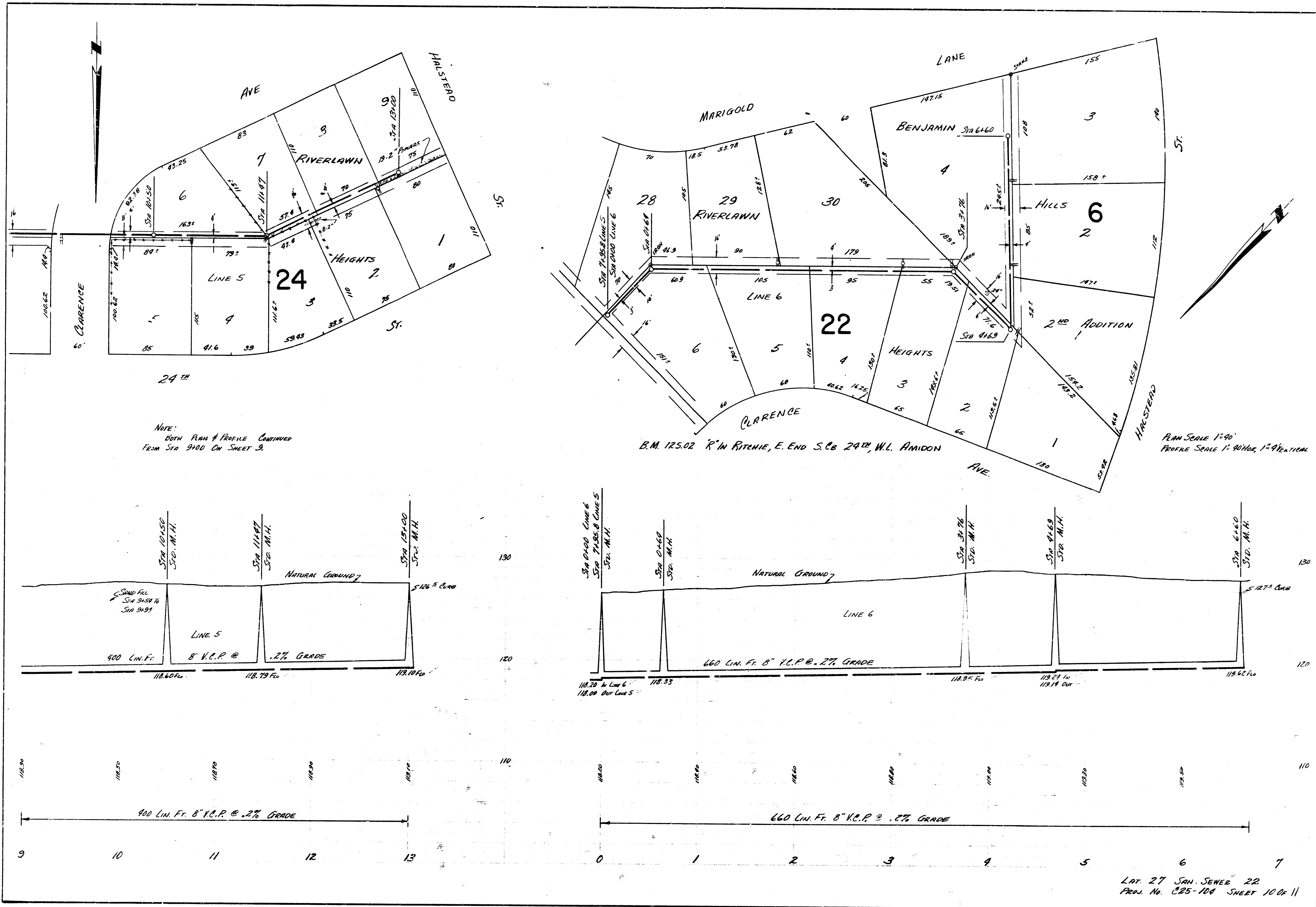


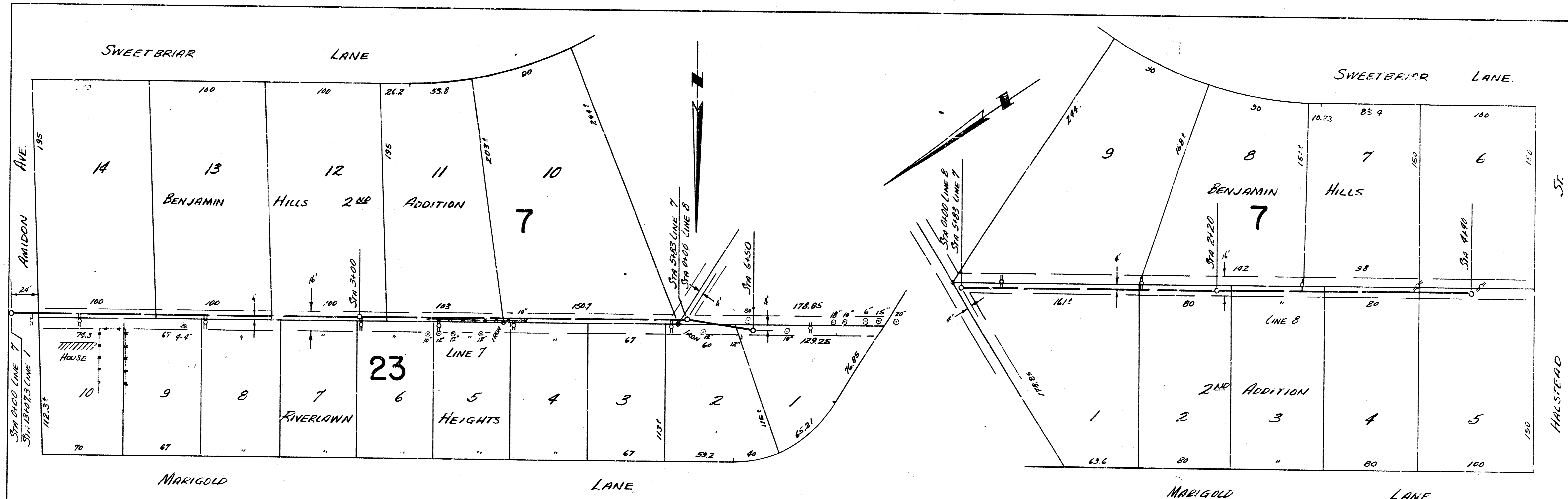
B.M. 125.02 "R" M. RITCHIE, E. END S. CB 24TH W.L. AMIDON

PLAN SCALE 1"=40'
PROFILE SCALE 1"=4' HORIZ. 1"=4' VERTICAL



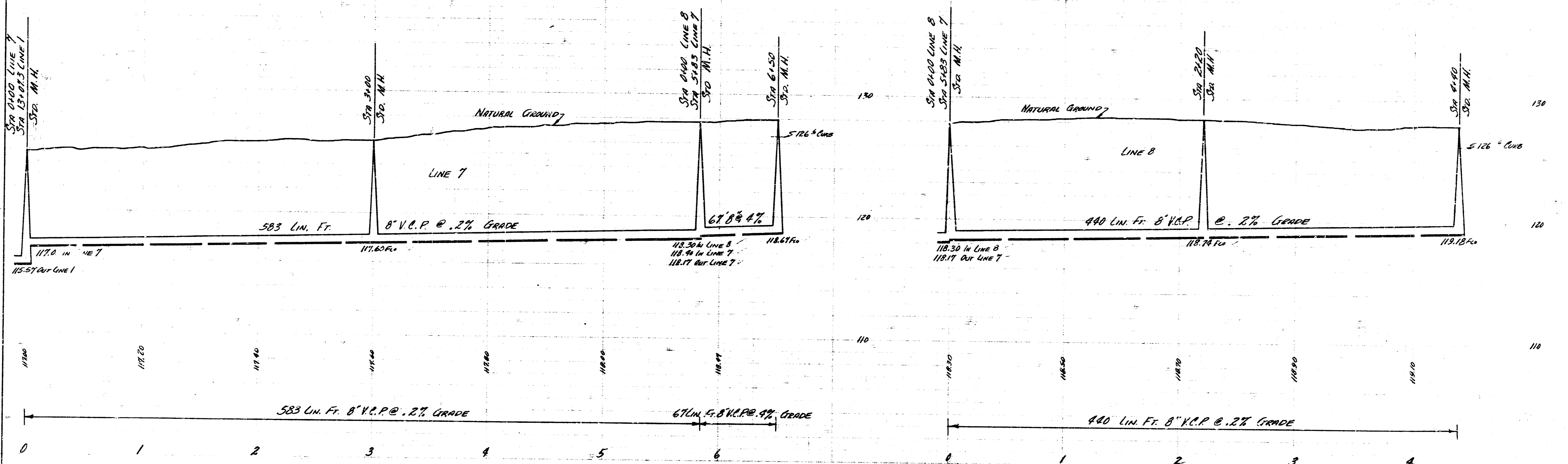
LAY. 27 SAN. SEWER 22
PROJ. No. C25-104 SHEET 9 OF 11





B.M. 126.87 8" in PINE W. END. S. CO. MARI GOLD, S.L. RIVERLAWN HILLS.

PLAN SCALE 1"=40'
PROFILE SCALE 1"=4' HORIZ. 1"=9' VERTICAL



LAT. 27 SAN SEWER 22
PLAN No CBS-109 SHEET 11 OF 11