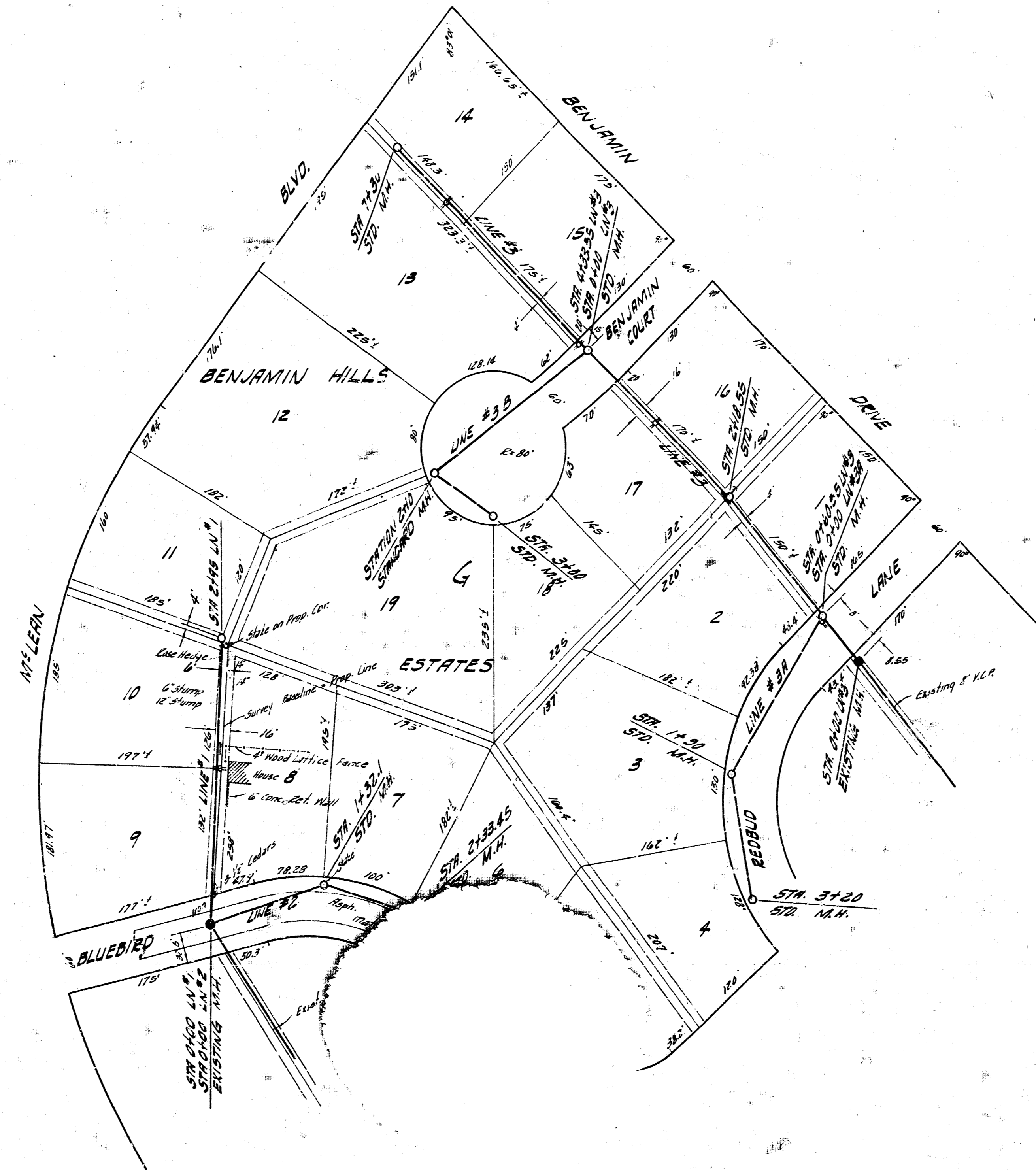


B.M. 123.34 5700 BEACH E.S. N.1/4 1/2 E. OF McLEARN ON S.E. QUARTER DR.  
 B.M. 125.78 5700 BEACH S.E. 1/4 N.W. REDBUD LAKE 165' S.W. OF  
 1011 BENJAMIN DR.

SCALE 1"=80'  
 NORTH



LATERAL TO SANITARY SEWER 22  
 CITY OF NICHITA, KANSAS  
 B.E. SMITH CITY ENGINEER  
 PROJ. NO. C29-49 DATE: March 1950

1/2

