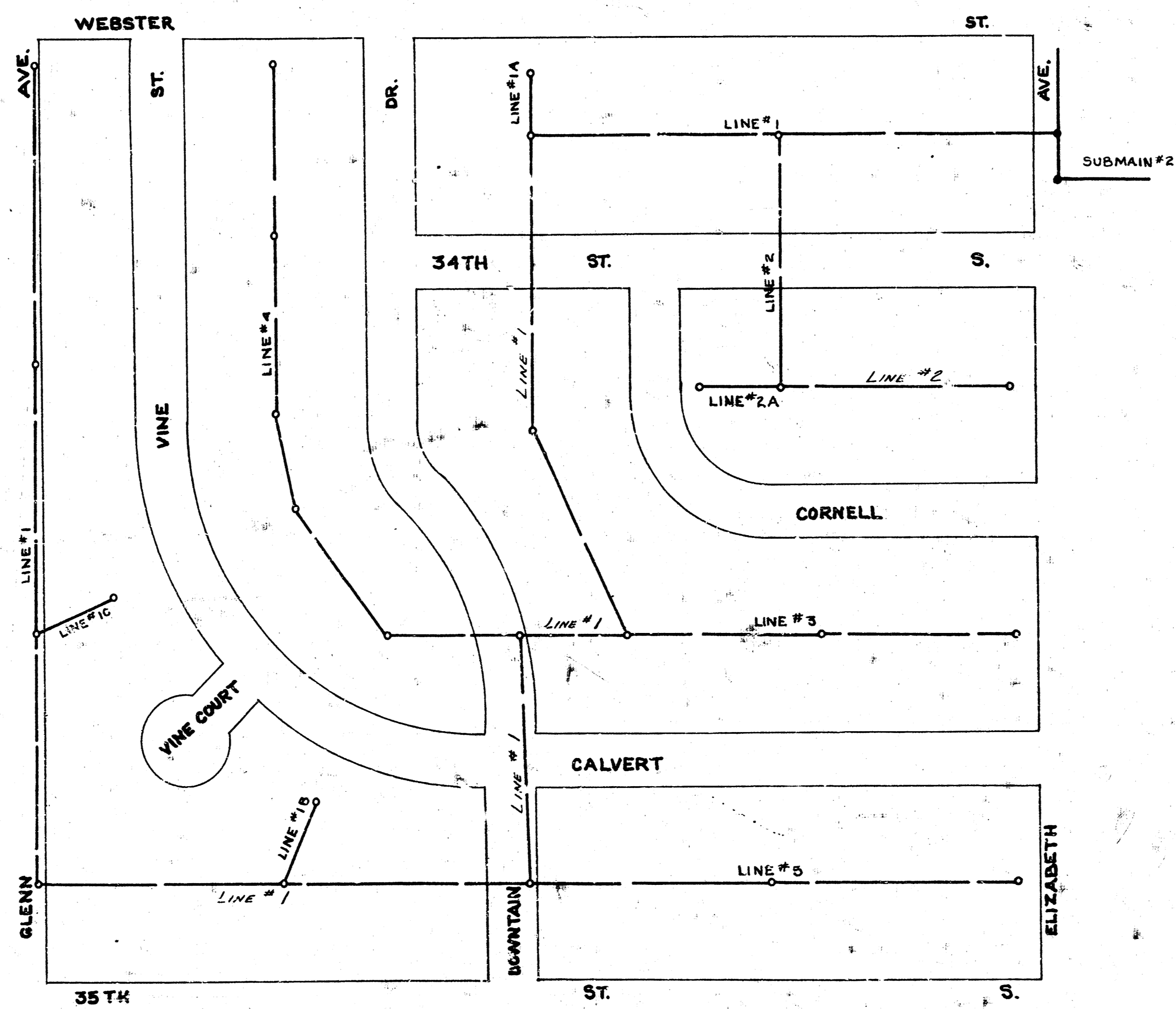
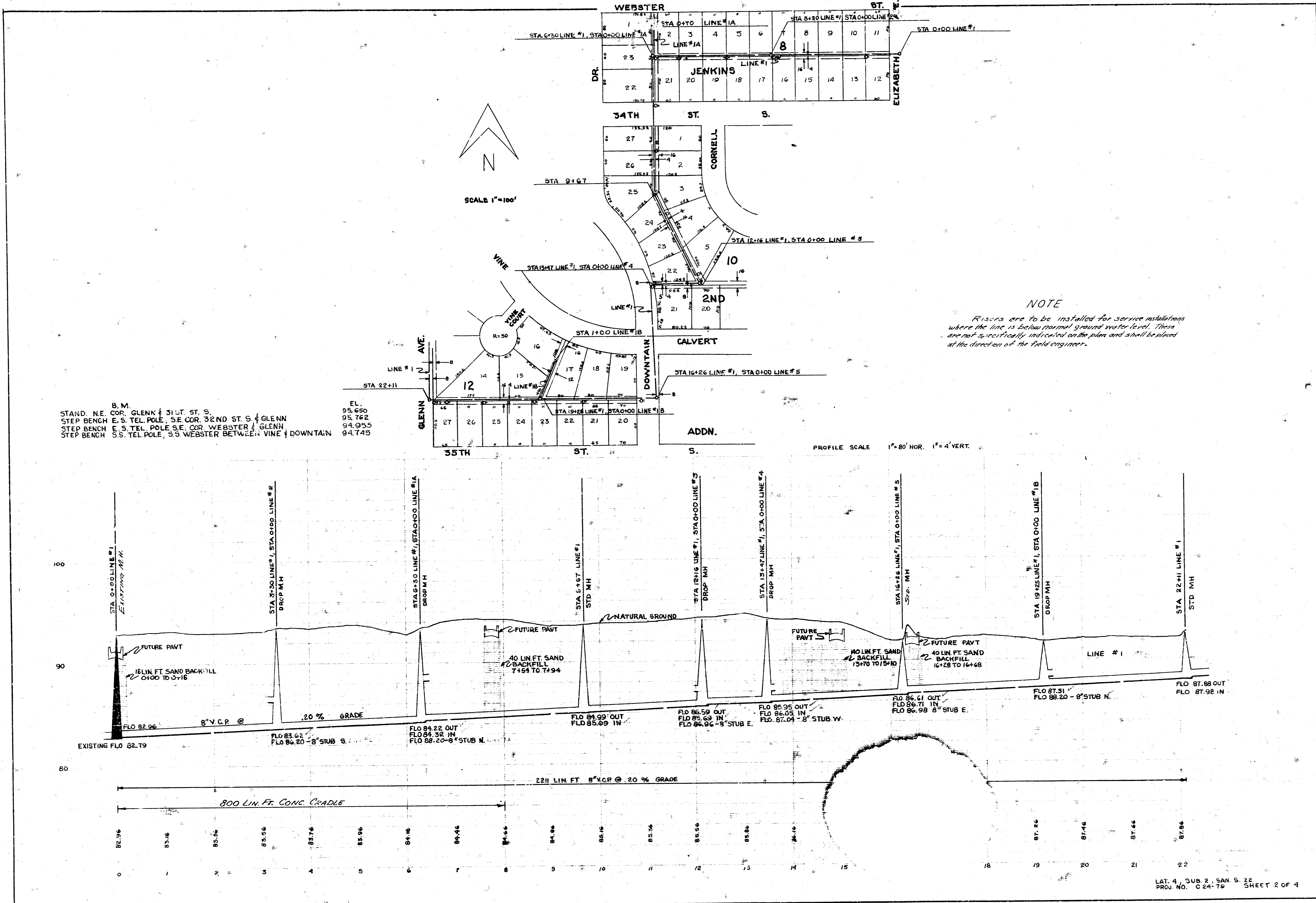


LOCATION MAP
 LATERAL NO. 4, SUBMAIN NO. 2, SANITARY SEWER NO. 22
 CITY OF WICHITA, KANSAS
 B.E. SMITH CITY ENGINEER PROJ. NO. C24-79

SURVEY: J. YOUNG, NOTEBOOK Y116
 PLAN: B. BINKER
 CHECKED: [unclear]
 DATE: JAN. 1955



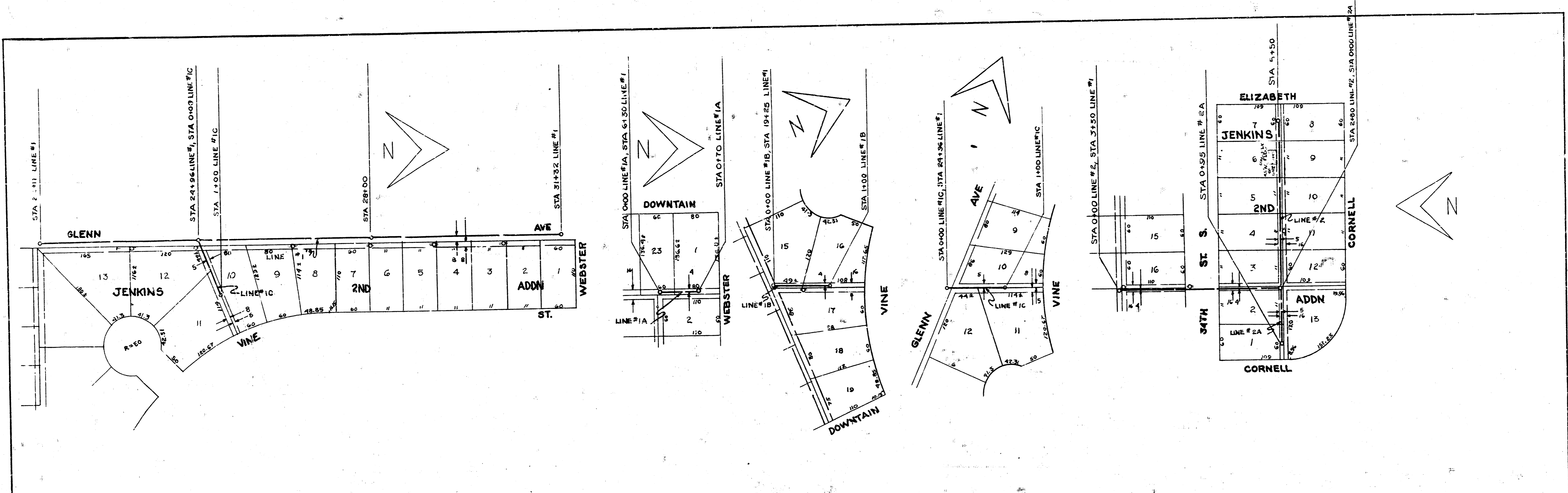


B.M.
 STAND. N.E. COR. GLENN & 31ST. ST. S. EL. 95.650
 STEP BENCH E.S. TEL. POLE, S.E. COR. 32ND ST. S. & GLENN 95.762
 STEP BENCH E.S. TEL. POLE S.E. COR. WEBSTER & GLENN 94.955
 STEP BENCH S.S. TEL. POLE, S.S. WEBSTER BETWEEN VINE & DOWNTON 94.745

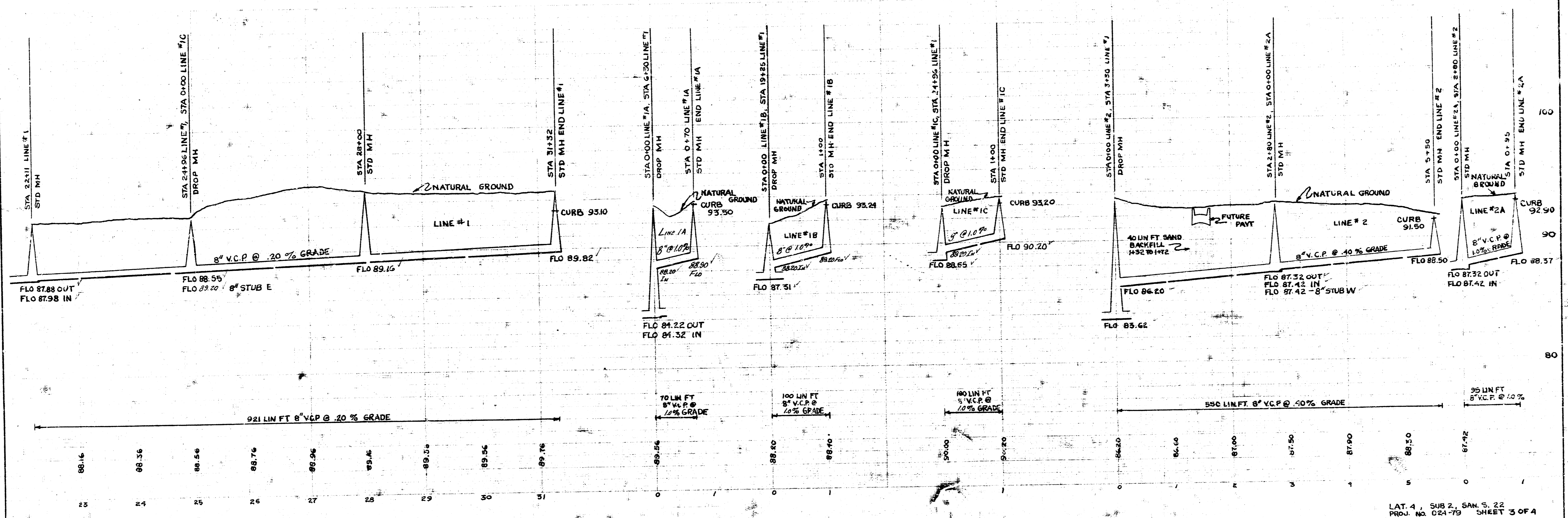
SCALE 1"=100'

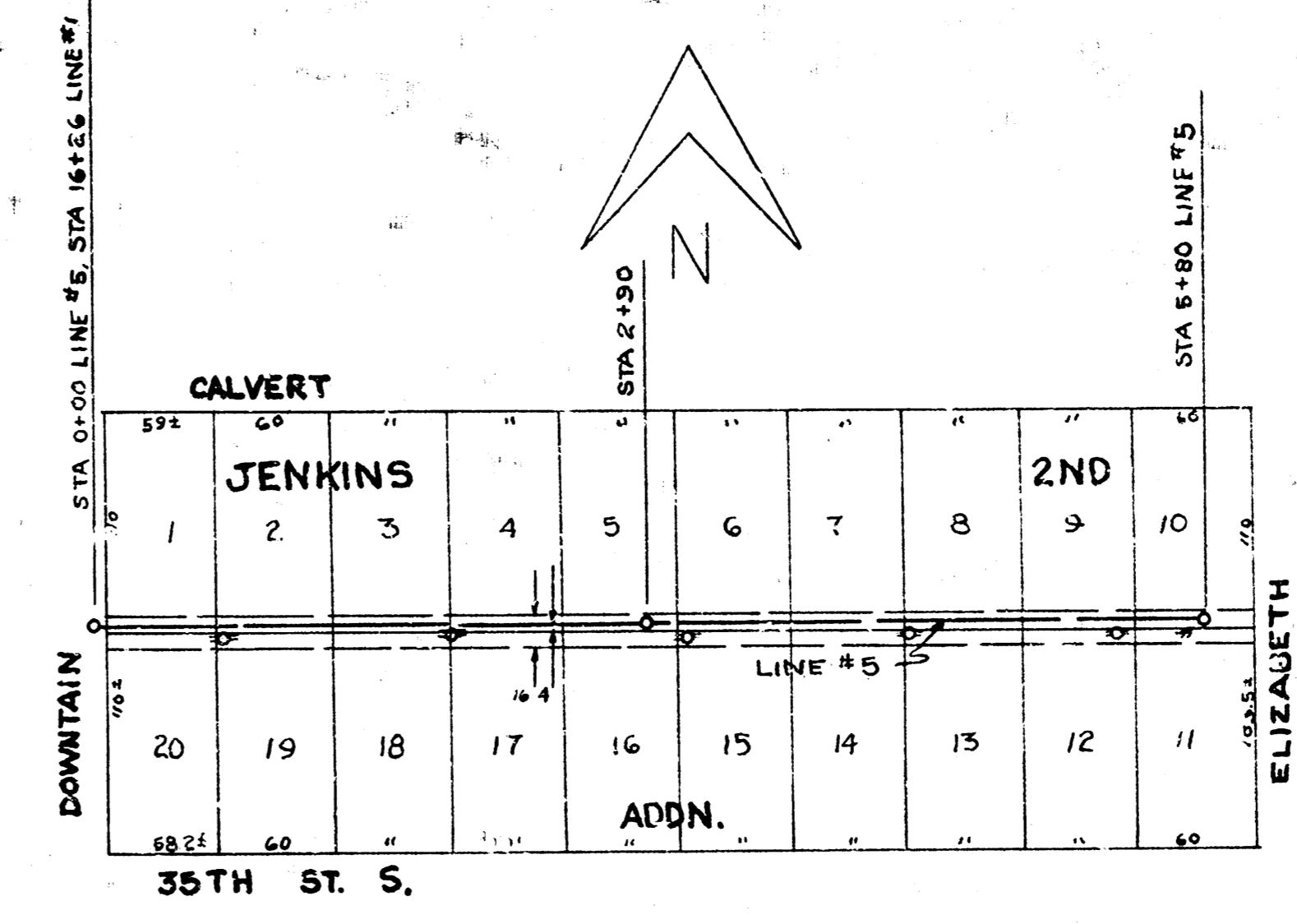
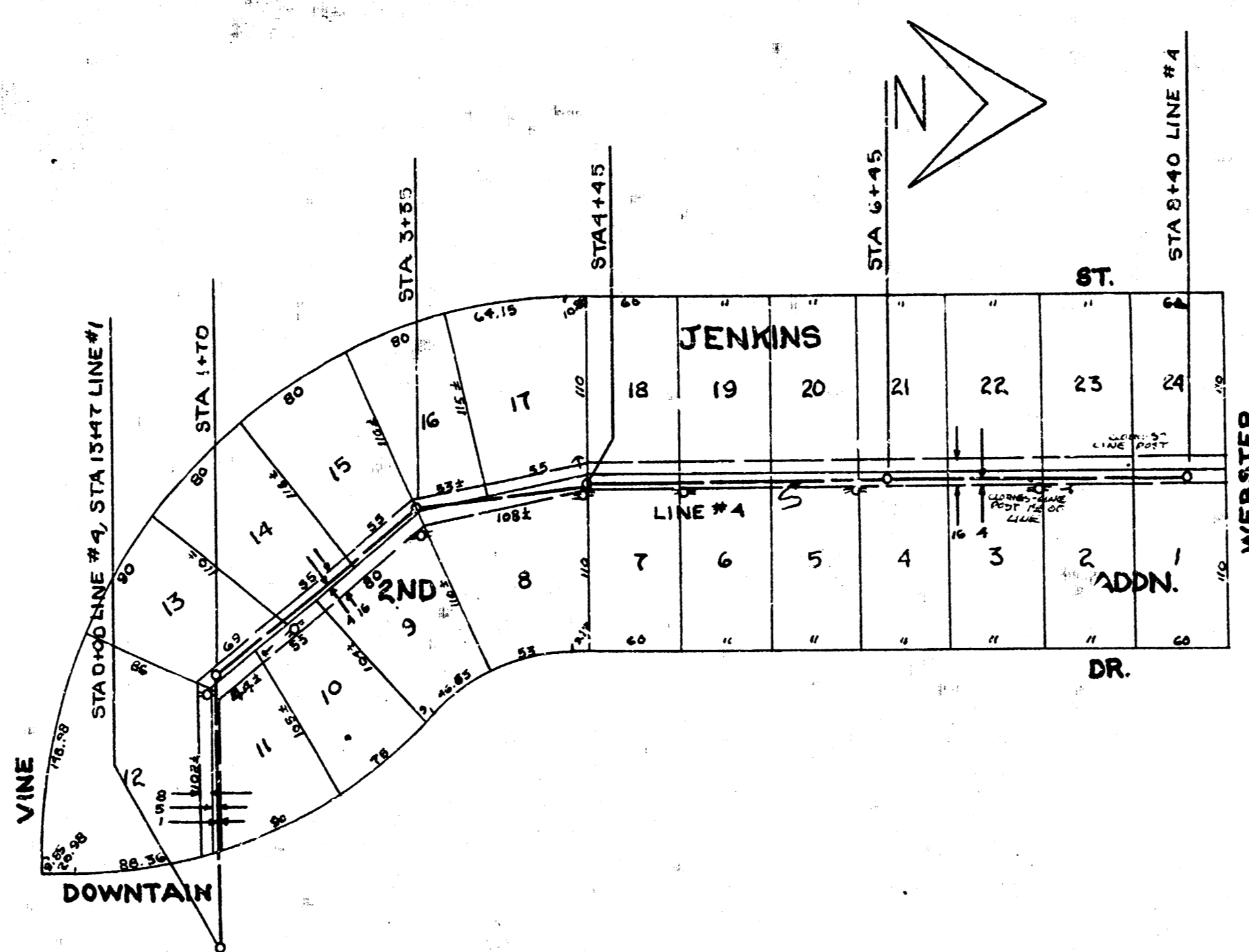
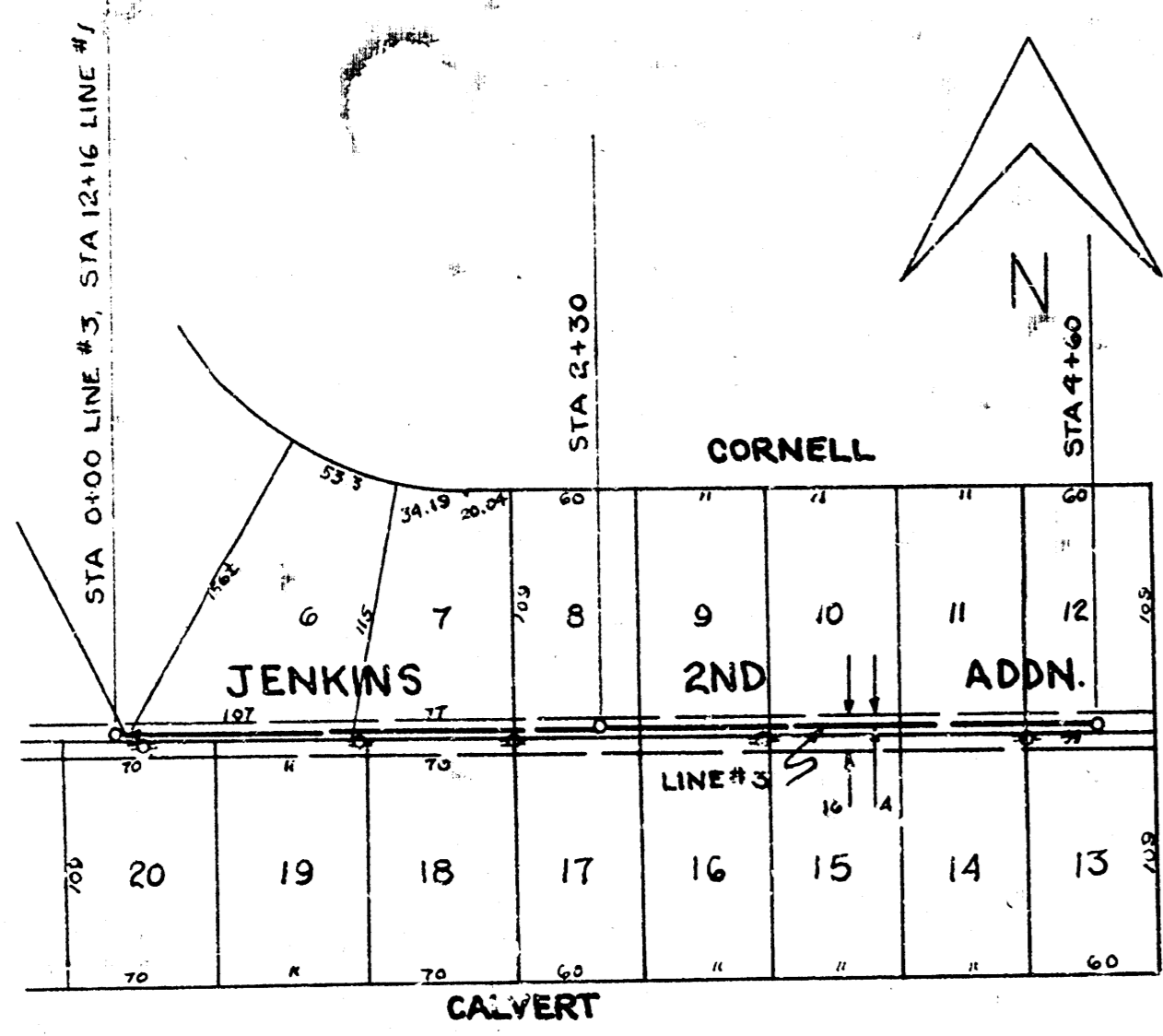
NOTE
 Risers are to be installed for service manholes where the line is below normal ground water level. These are not specifically indicated on the plan and shall be placed at the discretion of the field engineer.

PROFILE SCALE 1"=80' HOR. 1"=4' VERT.



SCALE 1"=80'
 PROFILE SCALE 1"=80' HORIZ 1"=4' VERT.





SCALE 1"=80'
 PROFILE SCALE 1"=80' HOR. 1"=4' VERT.

