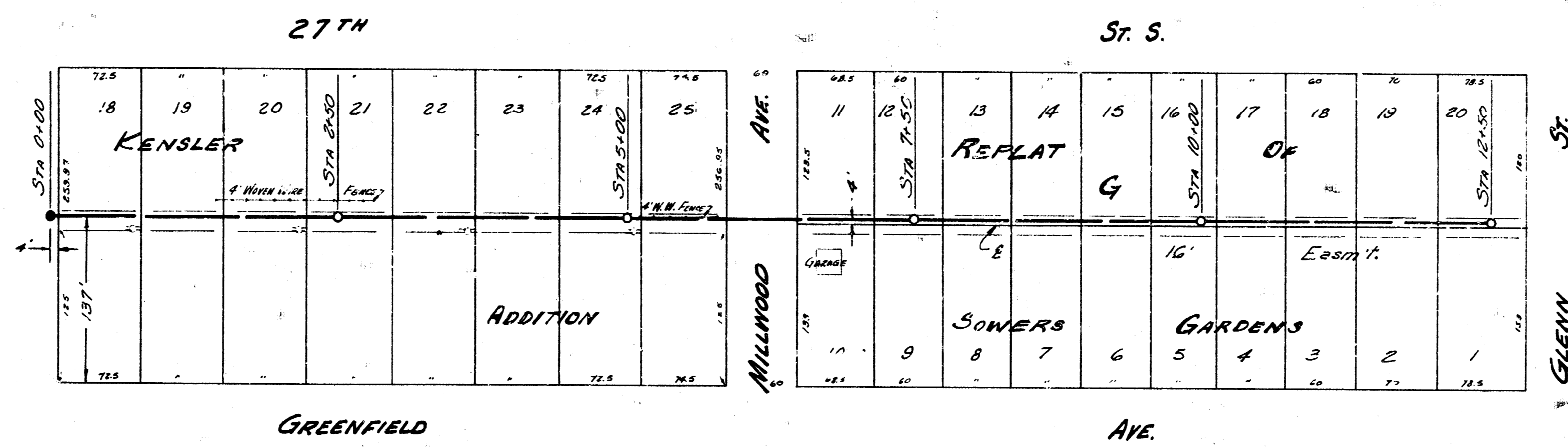
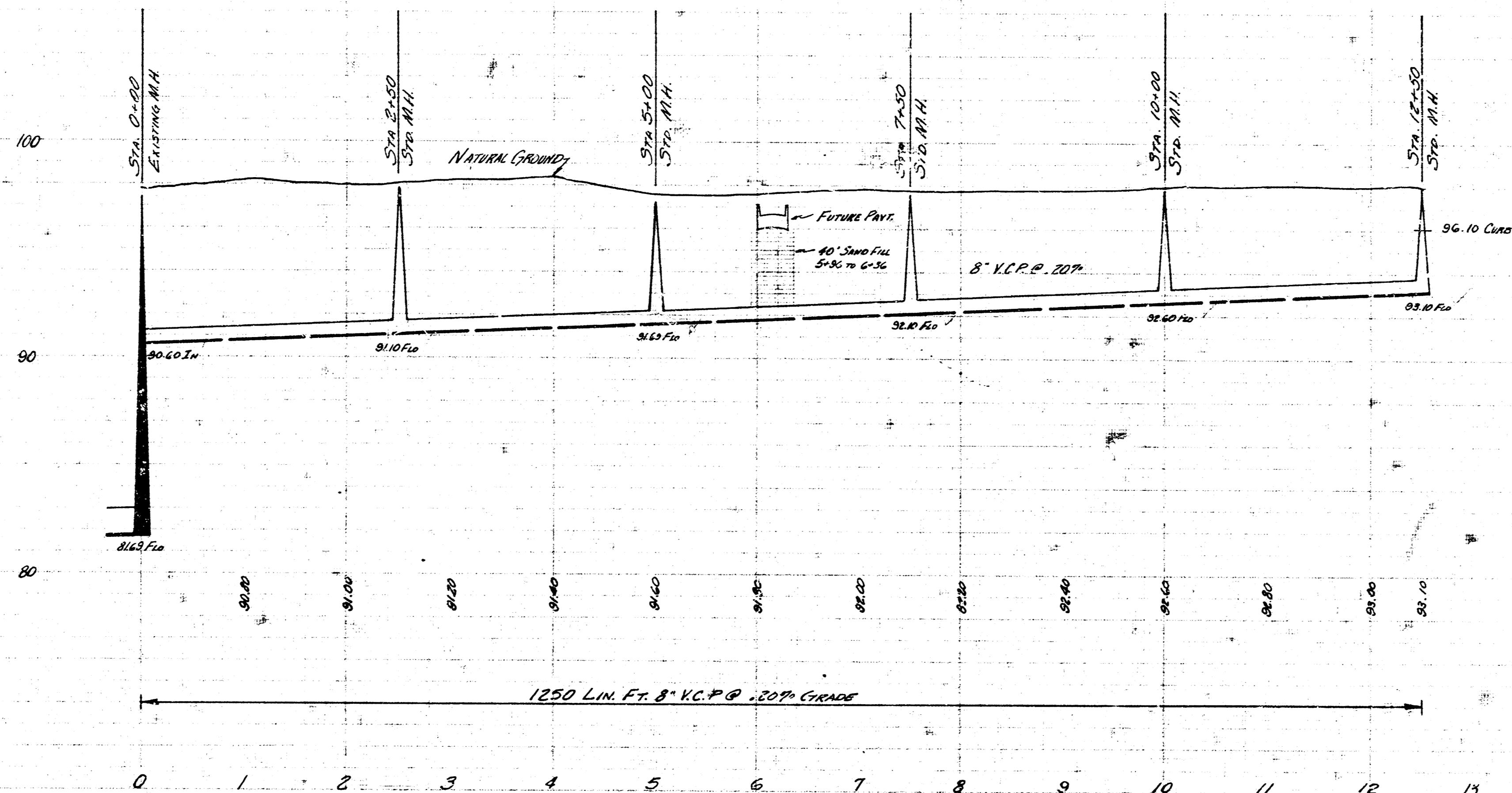


STANLEY C. ALLEN, WICHITA, KANSAS
 CHANGED
 DATE FEB. 1934

B.M. 9893 S.W. Cor. Conc. Pav. Ho. #1404 NW. MARION & 27TH
 B.M. 9813 S.W. Cor. 1st Conc. Strip Ho. #1226 W. 27TH S. 3
 B.M. 9867 S.E. Cor. Conc. Pav. Ho. #1812 W. GREENFIELD



PLAN SCALE 1" = 80'
 PROFILE 1" = 80' HOR. 1" = 4' VERTICAL



LAT. 6 SUB. 2 S.S. 22
 CITY OF WICHITA
 B.E. SMITH CITY ENGINEER
 FEB. 1935 PROJ. No. C25-5

