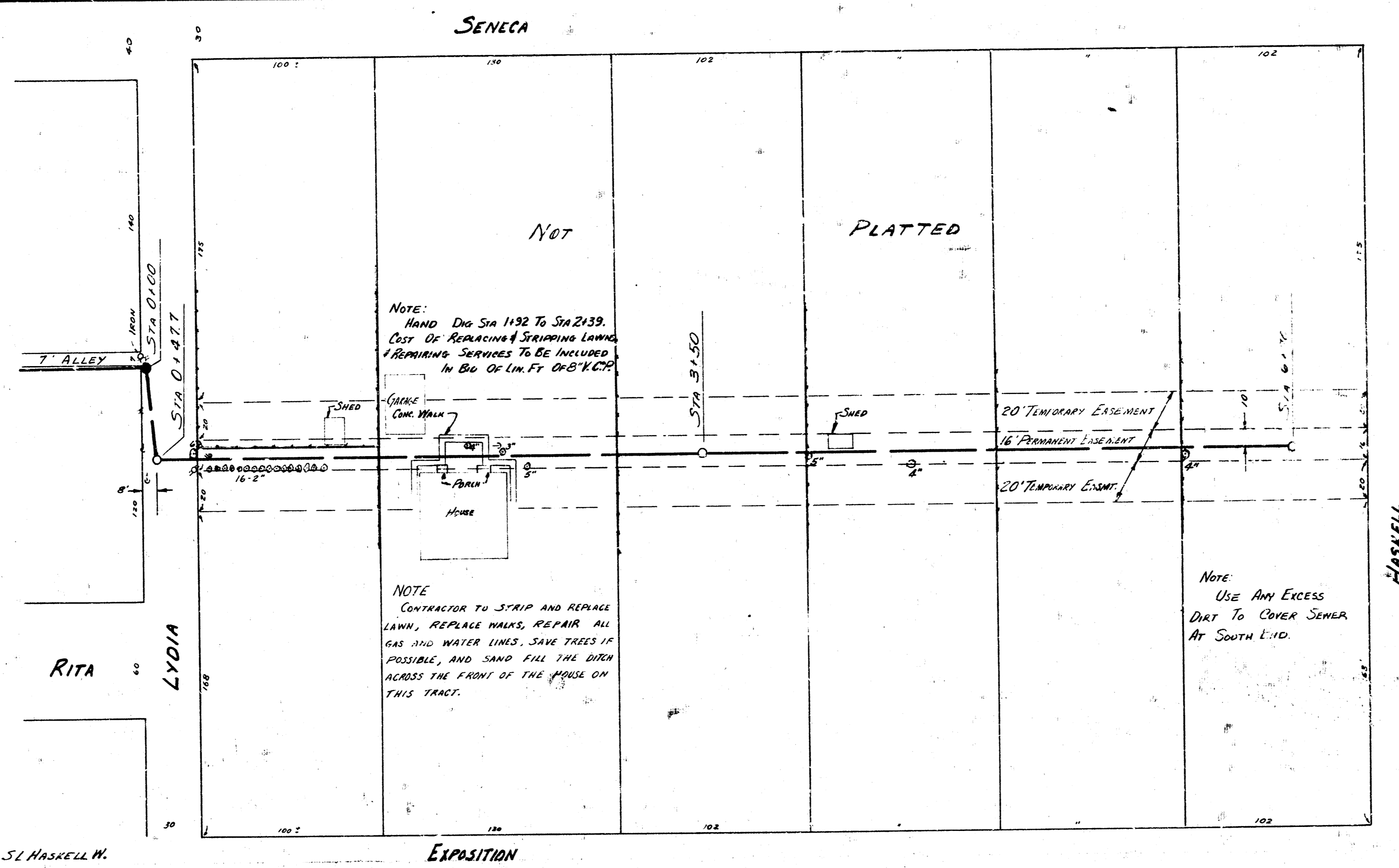


Survey I. Hanson, Notebook 14 BZ
 Plan D. Sellers
 Checked
 Date Feb 1956

B. M. 103.62 80 Spike W5 Tel. Pole E.S. Seneca, S. Haskell W.

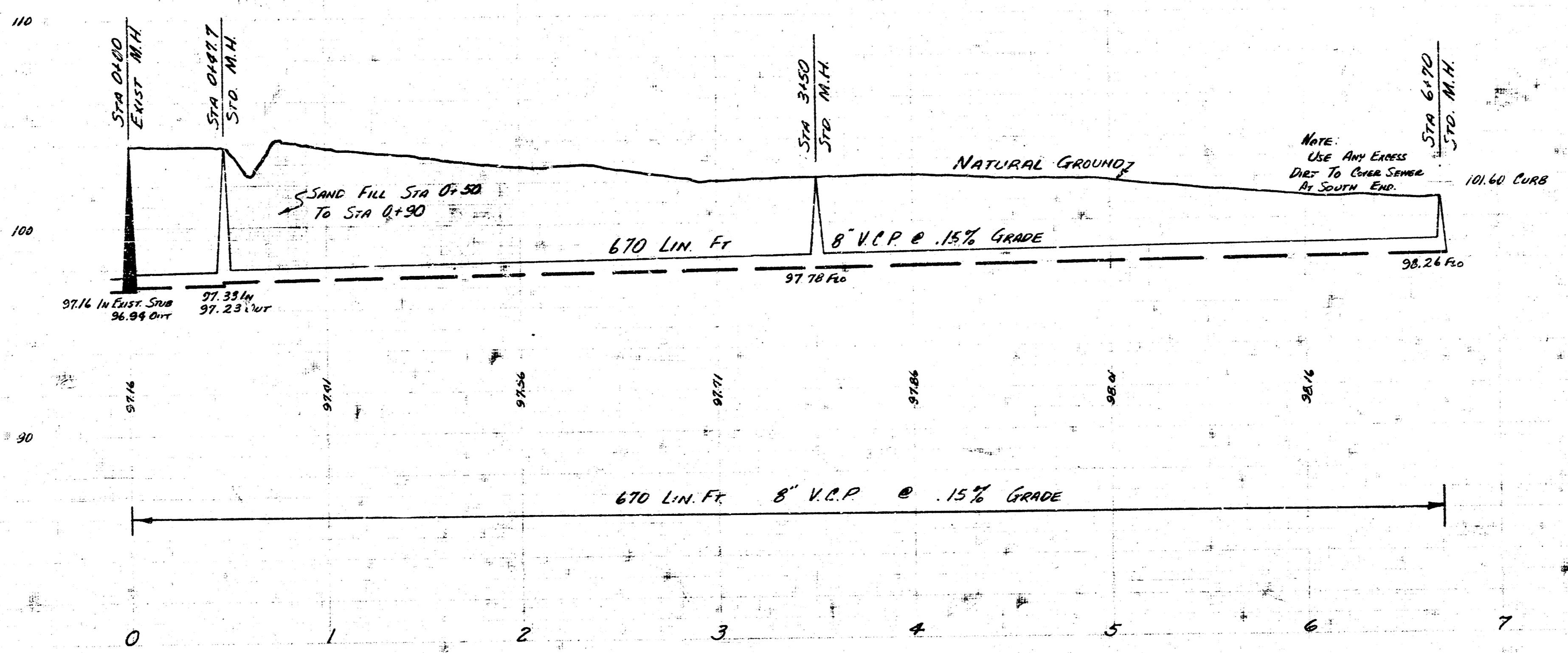


NOTE:
 HAND DIA STA 1+92 TO STA 2+39.
 COST OF REPAIRS & STRIPPING LAMPS
 & REMAINING SERVICES TO BE INCLUDED
 IN B.O. OF LIN. FT. 0+0-1+20

NOTE
 CONTRACTOR TO STRIP AND REPAIR
 DRIVE, REPLACE WALKS, REPAIR ALL
 GAS AND WATER LINES, SAVE TREES IF
 POSSIBLE, AND SAND FILL THE DITCH
 ACROSS THE FRONT OF THE HOUSE ON
 THIS TRACT.

NOTE
 USE ANY EXCESS
 DIRT TO COVER SEWER
 AT SOUTH END.

PLAN SCALE 1" = 40'
 PROFILE SCALE 1" = 40' HOR. 1" = 4' VERTICAL



NOTE:
 USE ANY EXCESS
 DIRT TO COVER SEWER
 AT SOUTH END.

LAT. 17 SUB. 2 S.S. 22
 CITY OF WICHITA, KANSAS
 B. E. SMITH CITY ENGINEER
 FEB. 1956 PROJ. No. C25-45