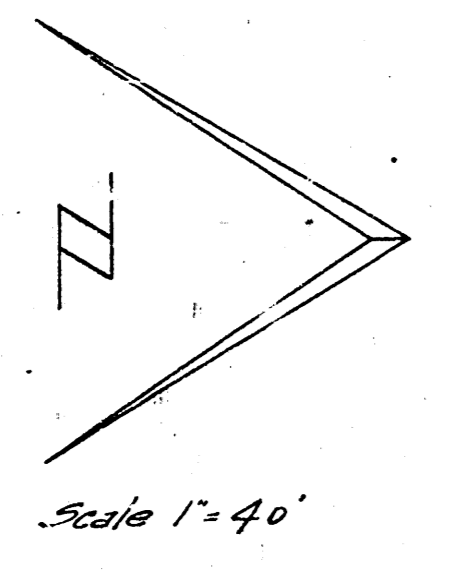
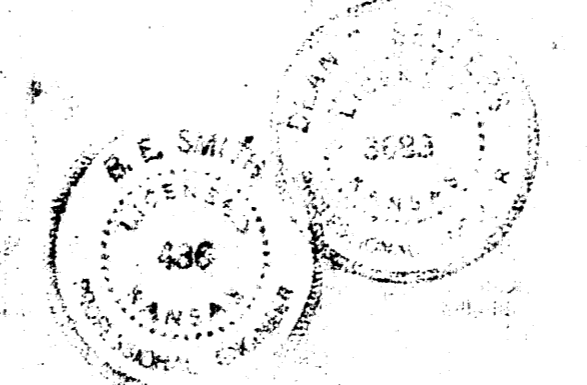
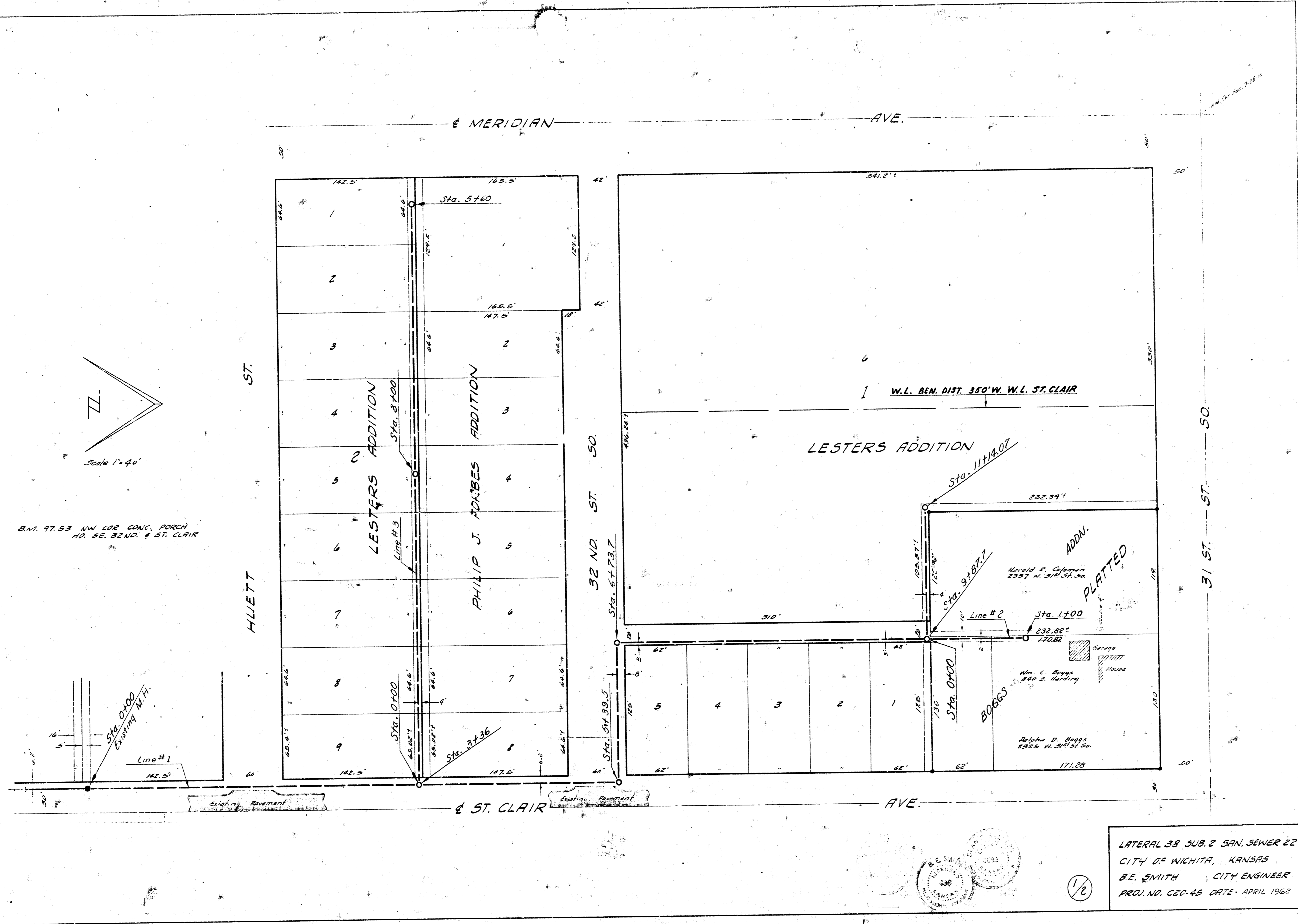


Surveyed by: Victor Cook 1987
Checked by: T. Henry Swann & Phillip B. D. Crumer
Checked by: Timothy Doherty



B.M. 97.53 NW COR CONC. PORCH
NO. SE. 32ND. & ST. CLAIR



1/2

LATERAL 38 SUB. 2 SAN. SEWER 22
CITY OF NICHITA, KANSAS
B. E. SMITH CITY ENGINEER
PROJ. NO. C20-45 DATE - APRIL 1962

