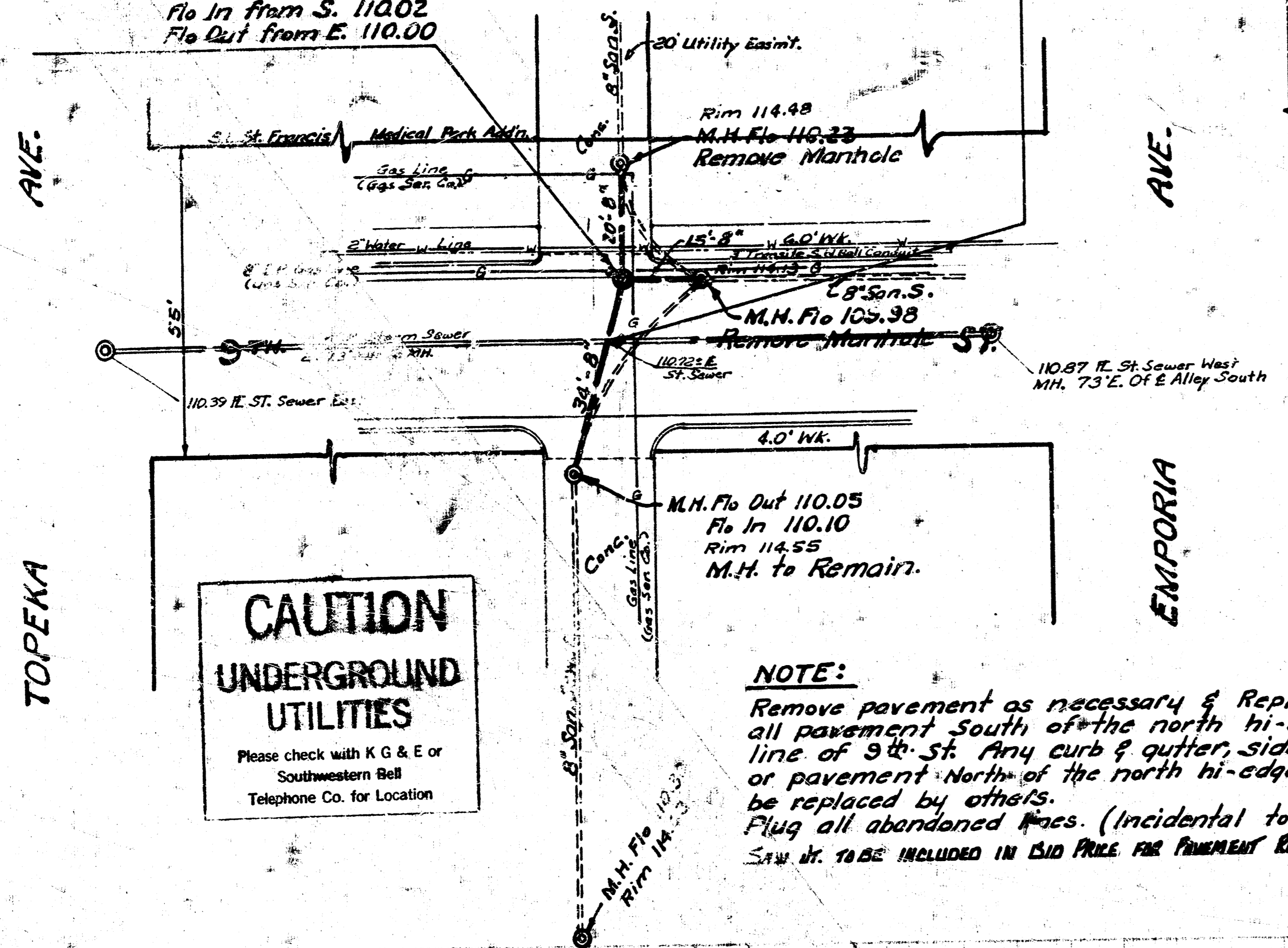


B.M. 113.77 W. Rim Manhole  
 @ 9th & E.S. Topeka

CONTRACTOR TO EXCAVATE STORM SEWER AT THIS LOCATION  
 SO THAT THE FIELD ENGINEER MAY DETERMINE THE BOTTOM  
 ELEVATION OF THE STORM SEWER PIPE BEFORE STARTING  
 ANY OTHER CONSTRUCTION ON THIS PROJECT.

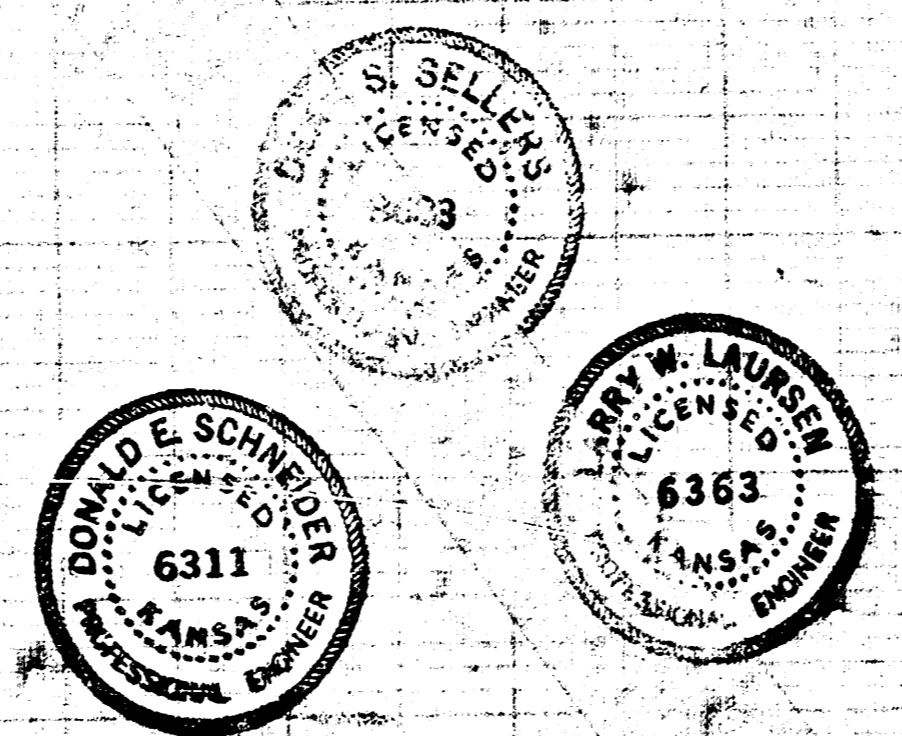
Const. Type A Manhole &  
 extend existing 8" Pipes to  
 connect. Flo In from N. 110.10  
 Flo In from S. 110.02  
 Flo Out from E. 110.00



**NOTE:**  
 Remove pavement as necessary & Replace  
 all pavement south of the north hi-edge  
 line of 9th St. Any curb & gutter, sidewalk  
 or pavement north of the north hi-edge shall  
 be replaced by others.  
 Plug all abandoned Paces. (Incidental to Project)  
 Saw Dr. to BE INCLUDED IN BID PRICE FOR PAVEMENT REPLACED.

**CAUTION  
 UNDERGROUND  
 UTILITIES**  
 Please check with K & E or  
 Southwestern Bell  
 Telephone Co. for Location

*NOTE  
 Do not print*

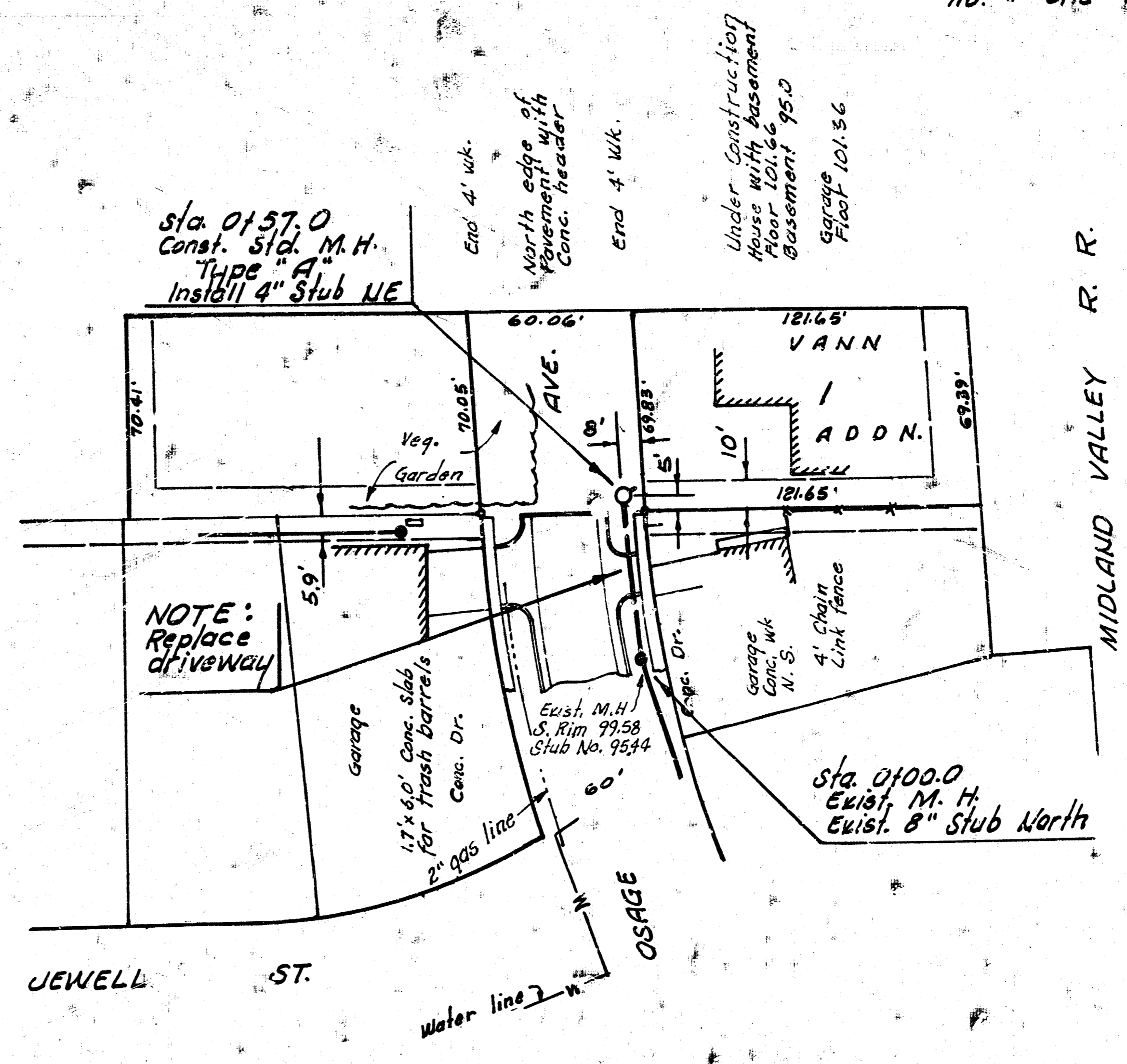


REPAIR AND RECONSTRUCTION OF A PORTION OF WEST SUBMAIN C. ON 9th ST.  
 AND LATERALS NORTH & SOUTH S5#1 BETWEEN TOPEKA & EMPORIA  
 CITY OF WICHITA, KS. R.W. Linn, City Engineer  
 Sanitary Sewer Repair on 9th Street  
 between Topeka & Emporia Ave.  
 Project No. QIKR 532-280 Date: APRIL 1973

DLK 142  
 J.R.W.

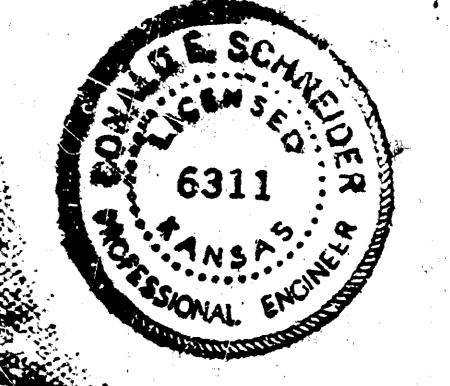
B.M. 97.66 "a" top N-ret. NW cor. sewer & Osage

B.M. 101.65 SW cor. conc. porch  
 No. # 2112 So. Osage

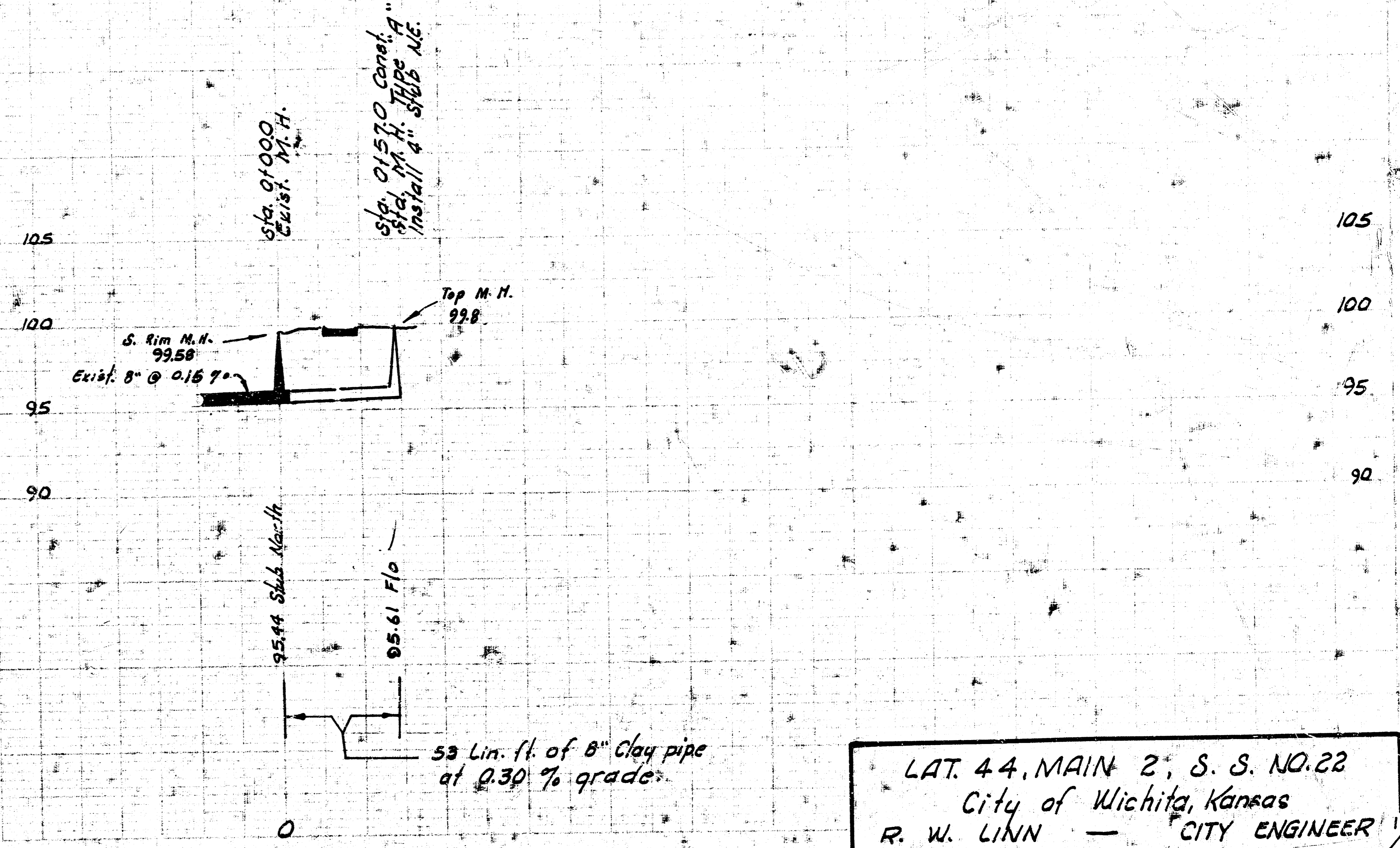


**NOTE:**  
 Replace driveway

Plan Scale 1" = 40'  
 Profile Scale 1" = 40' Horz.  
 1" = 5' Vert.



**NOTE TO CONTRACTOR**  
 This project will be constructed under  
 the supervision of the CITY ENGINEER  
 and conforming to the SPECIFICATIONS  
 of the CITY OF WICHITA. The CON-  
 TRACTOR will reimburse the City of  
 Wichita for all cost of Engineering, Plans,  
 and Inspection.



LAT. 44, MAIN 2, S. S. NO. 22  
 City of Wichita, Kansas  
 R. W. LINN — CITY ENGINEER  
 AUG. 1973 PROJECT NO. BHKBS03047

FILMED FROM THE BEST  
 AVAILABLE COPY