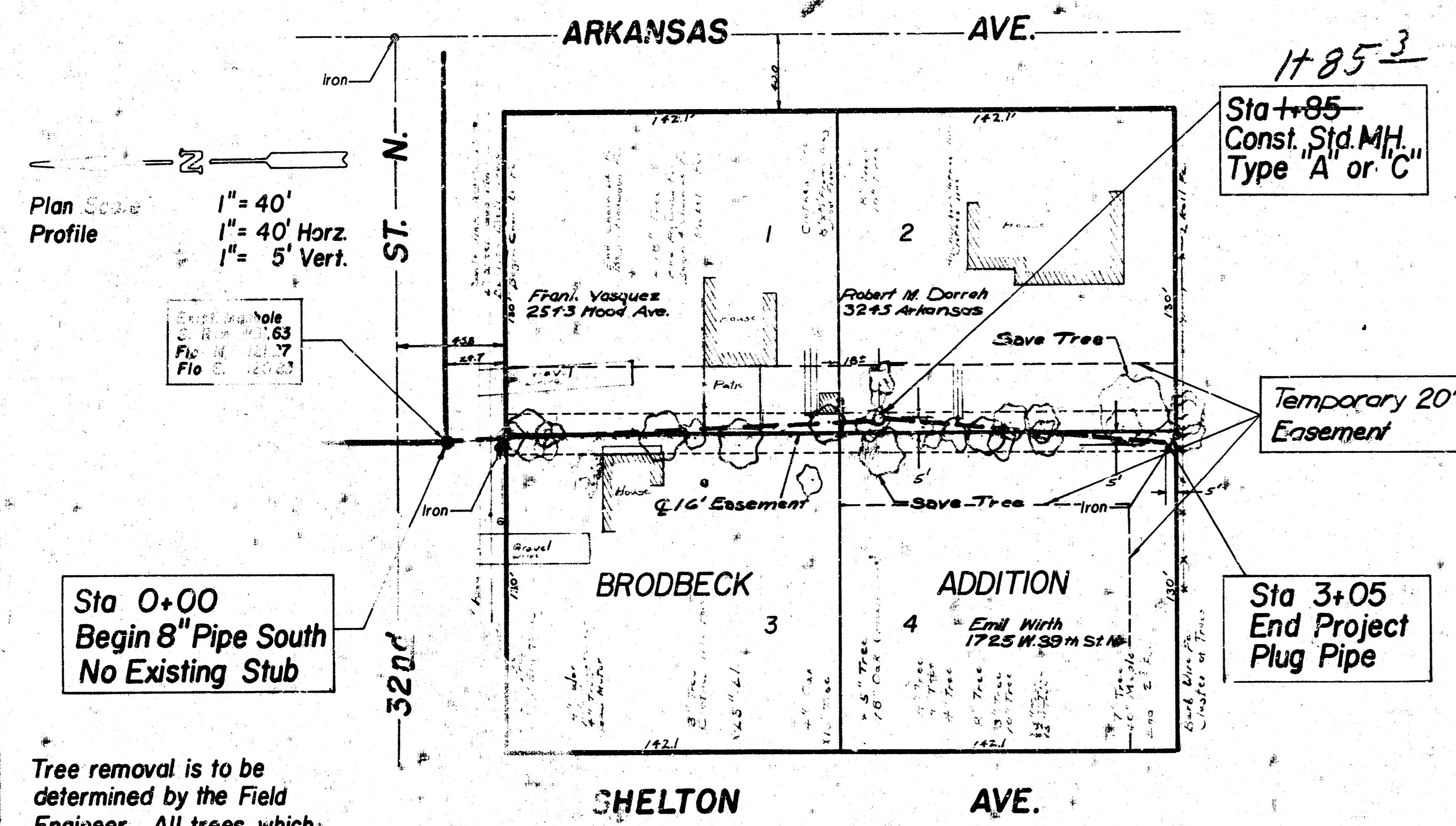


BM 129.81 City std. 32.0' S. of C of 33rd St. North going east & 22.0' E. of C of Arkansas  
 BM 130.51 Top East Curb of Arkansas at South line of 32nd St. North being 29.5' south of thimble on C



Plan Scale 1" = 40'  
 Profile 1" = 40' Horz.  
 1" = 5' Vert.

Sta 0+00  
 Begin 8" Pipe South  
 No Existing Stub

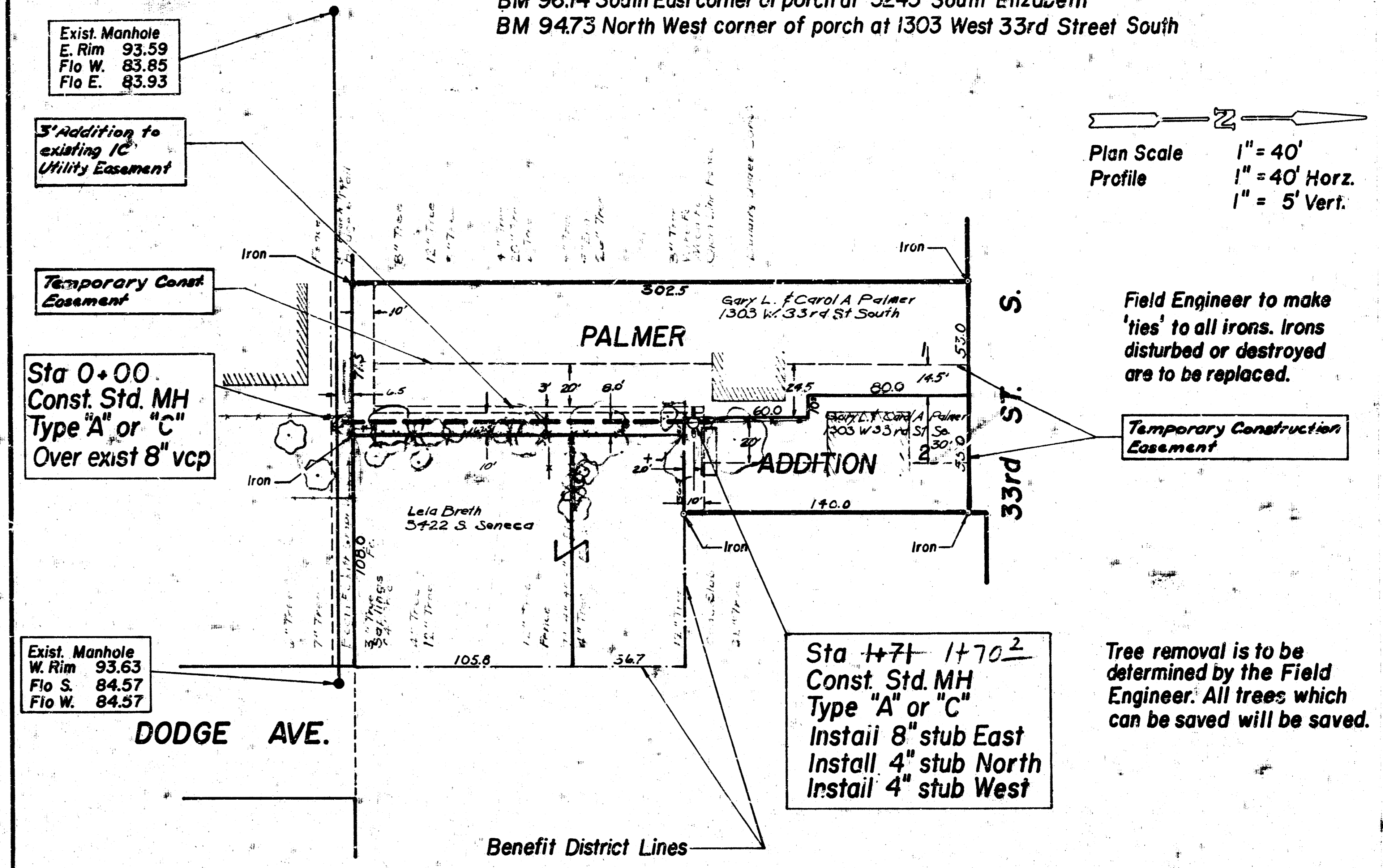
1+85  
 Sta 1+85  
 Const. Std. M.H.  
 Type "A" or "C"

Sta 3+05  
 End Project  
 Plug Pipe

Tree removal is to be determined by the Field Engineer. All trees which can be saved will be saved.

Field Engineer to make 'ties' to all irons. Irons disturbed or destroyed are to be replaced.

BM 96.14 South East corner of porch at 3243 South Elizabeth  
 BM 94.73 North West corner of porch at 1303 West 33rd Street South



Plan Scale 1" = 40'  
 Profile 1" = 40' Horz.  
 1" = 5' Vert.

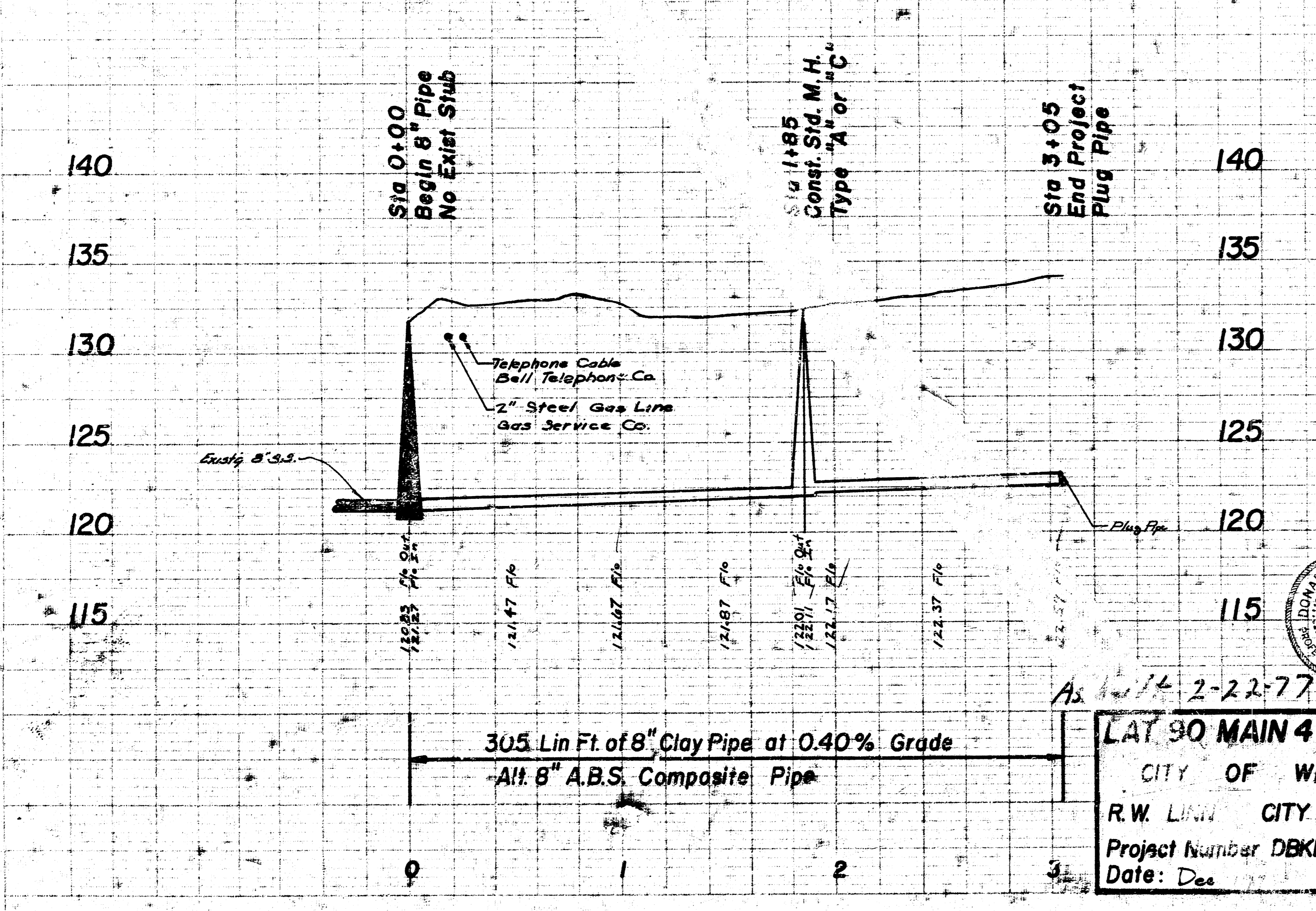
Sta 0+00  
 Const. Std. M.H.  
 Type "A" or "C"  
 Over exist 8" vcp

Sta 1+71  
 Const. Std. M.H.  
 Type "A" or "C"  
 Install 8" stub East  
 Install 4" stub North  
 Install 4" stub West

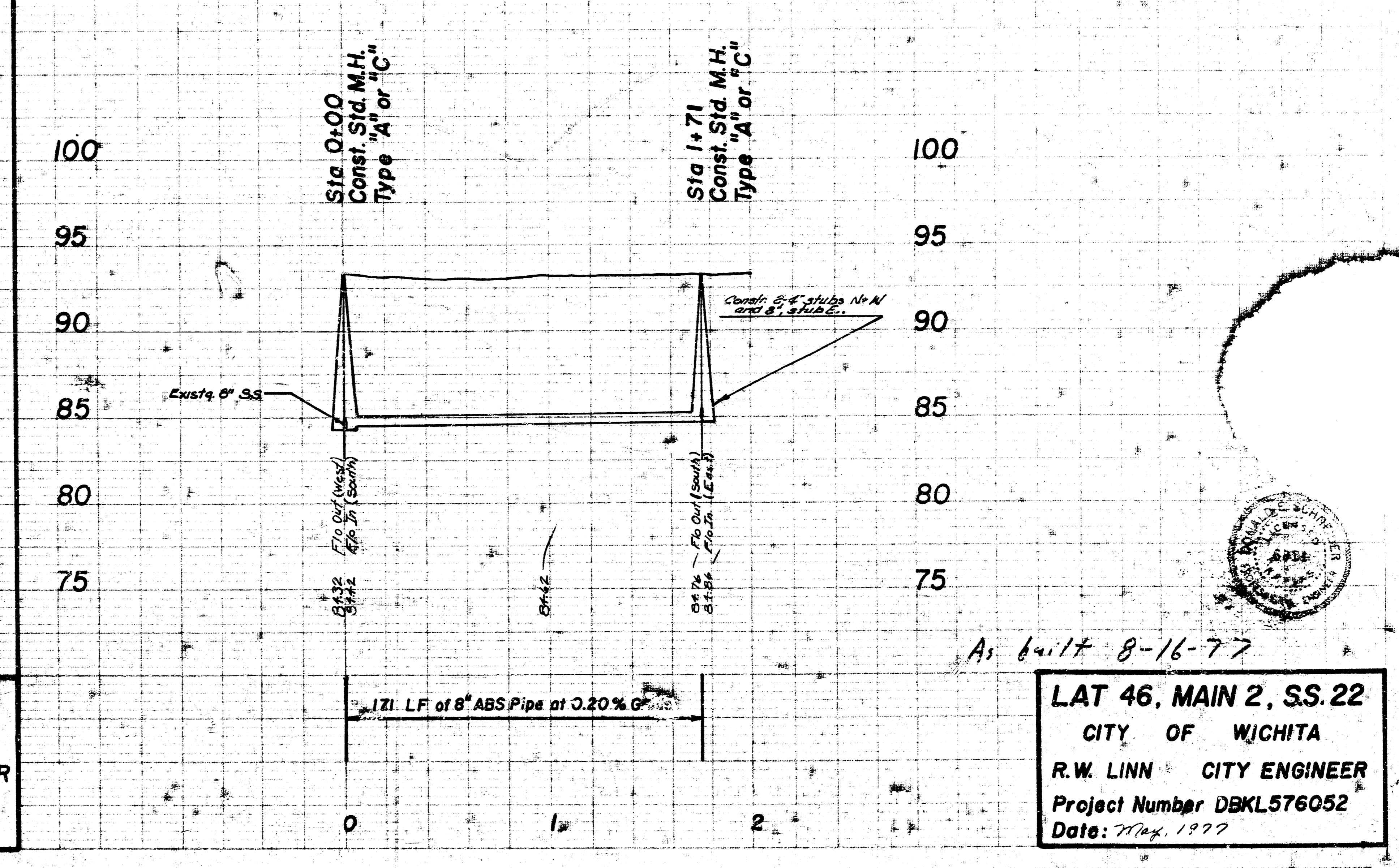
Field Engineer to make 'ties' to all irons. Irons disturbed or destroyed are to be replaced.

Temporary Construction Easement

Tree removal is to be determined by the Field Engineer. All trees which can be saved will be saved.



As built 2-22-77  
**LAT 90 MAIN 4 SS 23**  
 CITY OF WICHITA  
 R.W. LINN CITY ENGINEER  
 Project Number DBKL576057  
 Date: Dec



As built 8-16-77  
**LAT 46, MAIN 2, S.S. 22**  
 CITY OF WICHITA  
 R.W. LINN CITY ENGINEER  
 Project Number DBKL576052  
 Date: Aug. 1977

Surveying Book No. DLK 270

