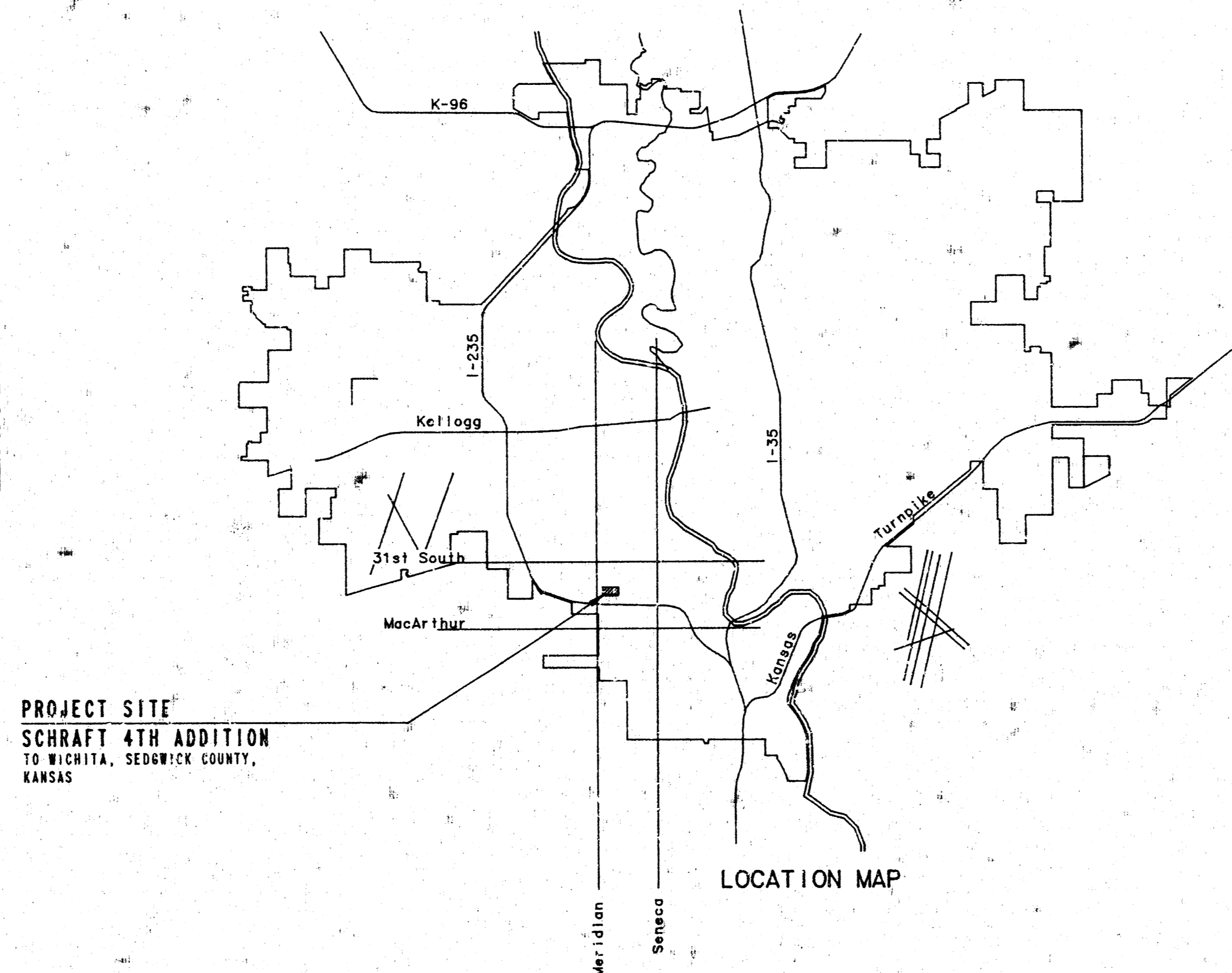


CONSTRUCTION PLANS FOR  
**LATERAL 36, MAIN 3**  
 OF  
**SANITARY SEWER NO. 22**  
 IN  
**THE CITY OF WICHITA,**  
 SEDGWICK COUNTY, KANSAS  
 MICHAEL E. LINDEBAK, P.E. CITY ENGINEER



PROJECT SITE  
 SCHRAFT 4TH ADDITION  
 TO WICHITA, SEDGWICK COUNTY,  
 KANSAS

LOCATION MAP

INDEX OF SHEETS.

SHEET NO.	TITLE
1	TITLE SHEET
2	KEY MAP AND PLAT
3-4	PLAN/PROFILE
5	FRAME AND COVER DETAIL

AS BUILT  
 8-87  
 RDL

CITY OF WICHITA PROJECT NO. 468-76-245-81673-000-000-001

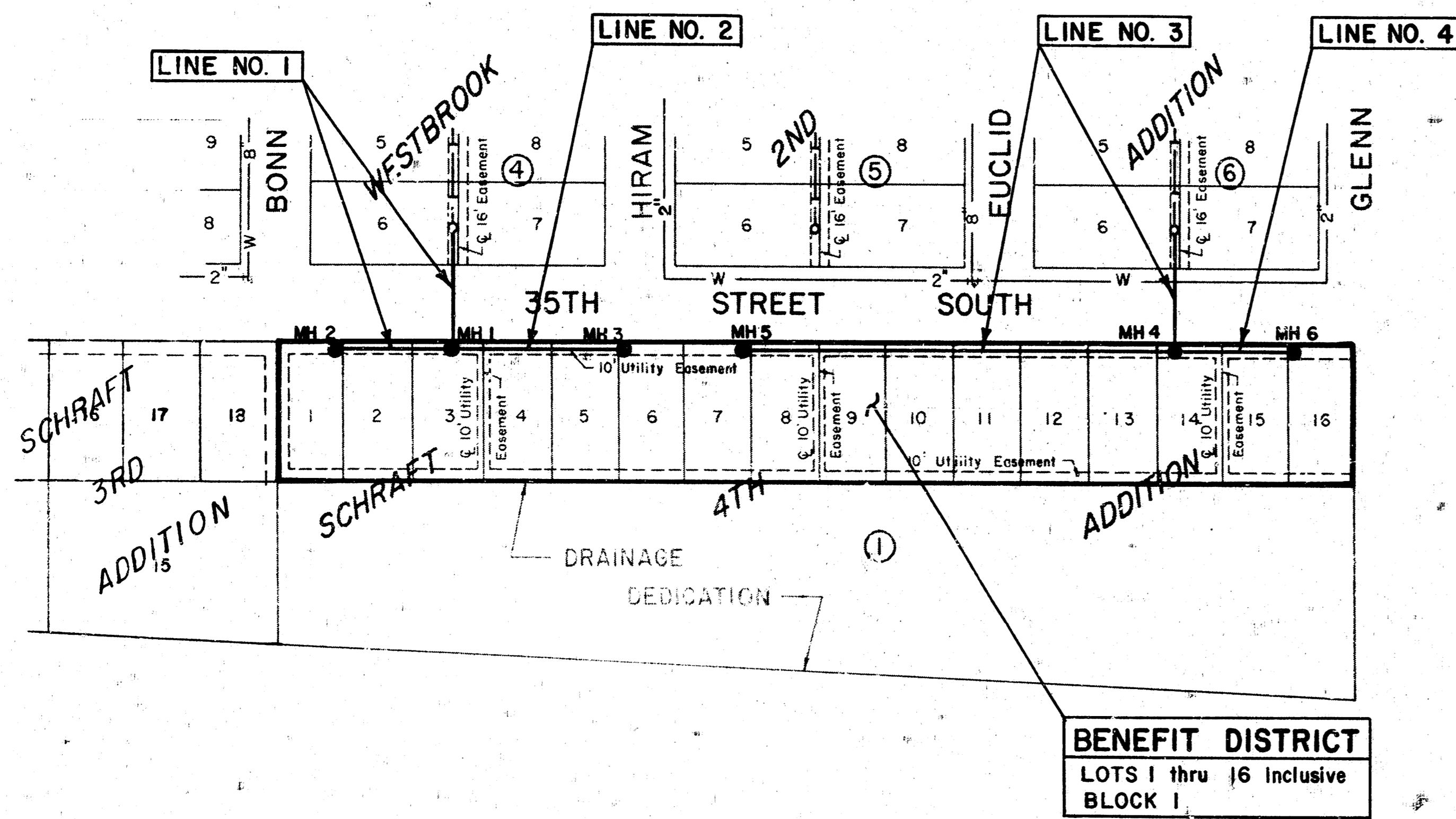
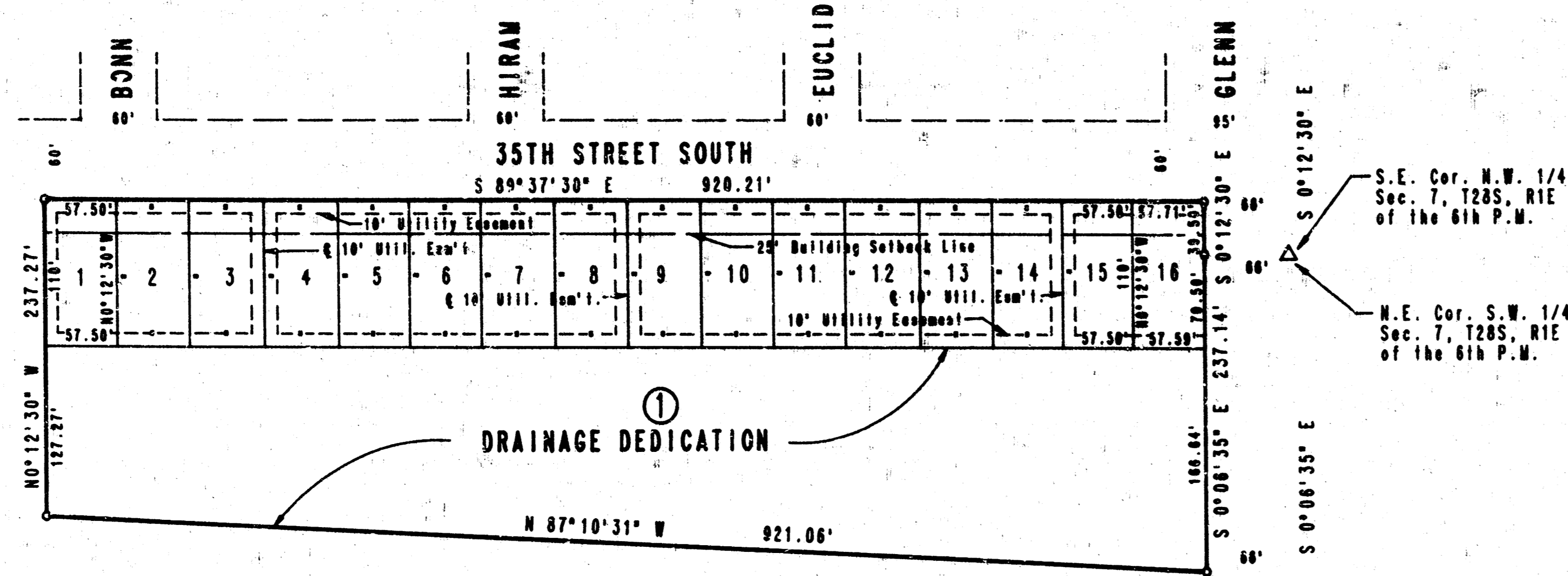
**MARCH 1987**

PLANS PREPARED BY  
**PROFESSIONAL ENGINEERING CONSULTANTS, P.A.**  
 ENGINEERS  
 WICHITA, KANSAS



FILMED FROM THE BEST  
 AVAILABLE COPY

# SCHRAFT 4TH ADDITION TO WICHITA, SEDGWICK COUNTY, KANSAS

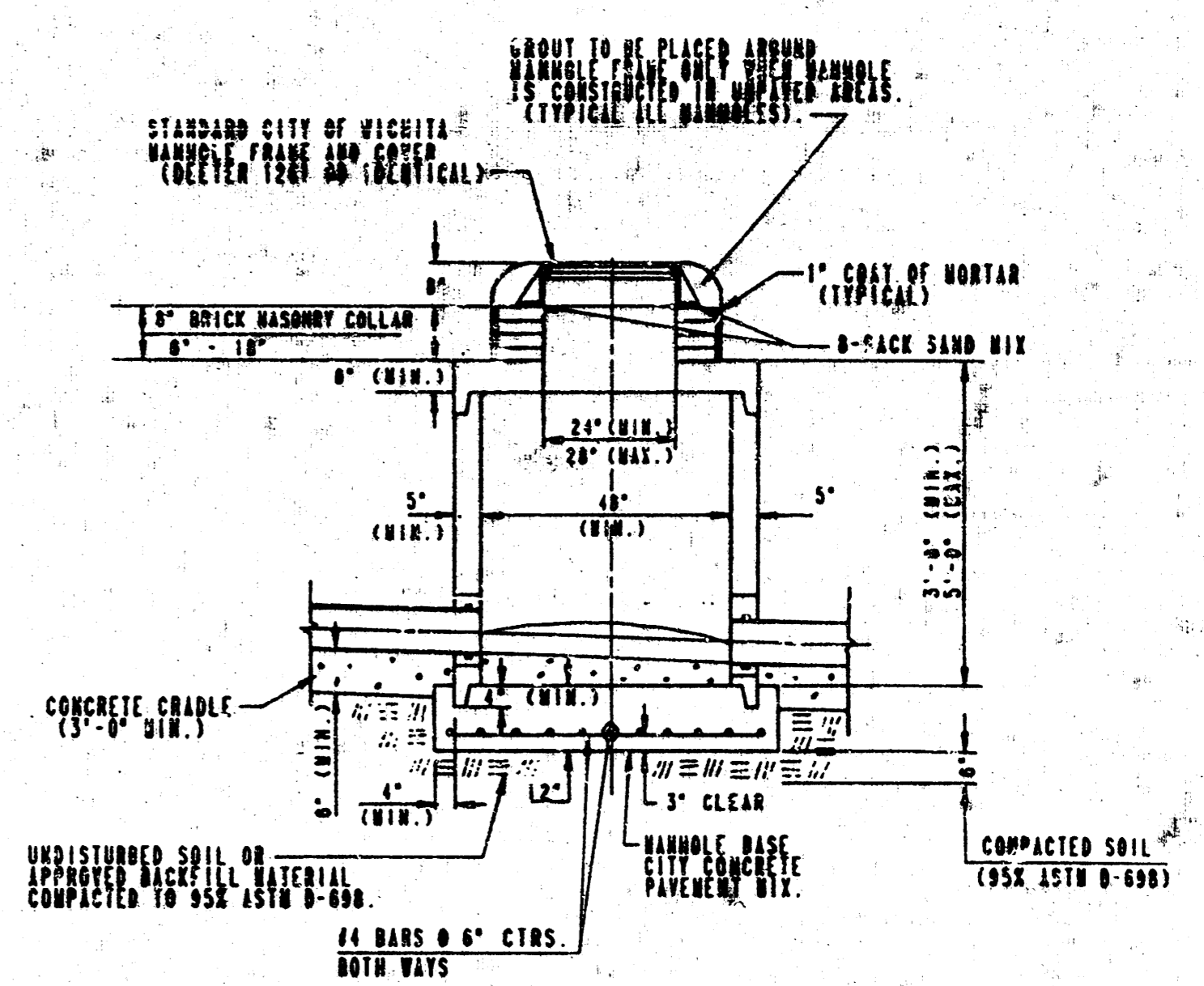


SCALE : 1" = 100'

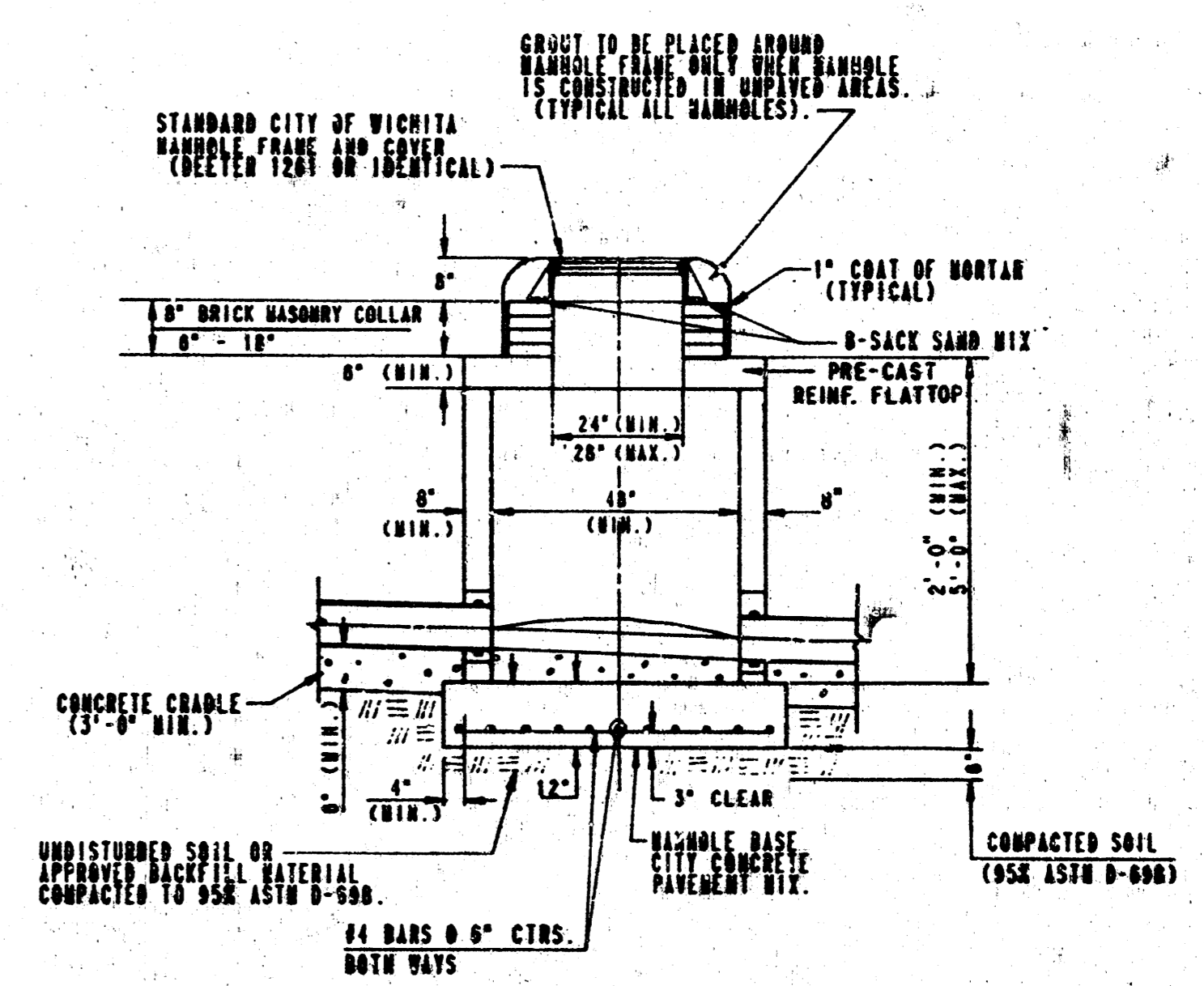
CITY N.W. DISC 50' 2" N.W. OF  
SP WEST SIDE OF MERIDIAN 30 FT.  
NORTH OF WOOD BRIDGE 8 FT.  
EAST AND 2 FT. NORTH OF N.W. COR.  
ELEV. +1283.858 N.S.L. (CITY DATUM=95.658)  
MINIMUM PAD ELEVATION FOR ALL  
LOTS = 1282.85 N.S.L. (CITY DATUM=95.65)

GENERAL NOTES

- ALL CONSTRUCTION AND MATERIALS TO COMPLY WITH CITY OF WICHITA SPECIFICATIONS AND STANDARDS.
- ALL ELEVATIONS SHOWN ARE CITY OF WICHITA DATUM (USGS-1187.4 = CITY DATUM).
- THE CONTRACTOR SHALL LIMIT THE EXTENT OF TRENCH TO REMAIN OPEN OVERNIGHT AND WEEKENDS TO LESS THAN 50 FEET.
- AT LEAST 48 HOURS PRIOR TO BEGINNING EXCAVATION, IF REQUIRED, (EXCLUDING WEEKENDS AND HOLIDAYS), THE CONTRACTOR SHALL CONTACT THE KANSAS ONE-CALL SYSTEM, A UTILITY LOCATION SERVICE, AT (316) 687-2470 TO REQUEST THE FOLLOWING UTILITY COMPANIES TO LOCATE ANY EXISTING LINES WITHIN THE PROJECT AREA: KPL/GAS SERVICE COMPANY, K.G.A.E., THE WICHITA WATER DEPARTMENT, AIR CAPITAL CABLEVISION, AND THE TELEPHONE COMPANY.
- UNDERGROUND UTILITY LINES, OVERHEAD UTILITY LINES, AND UTILITY POLES ARE TO BE ADJUSTED AS NECESSARY BY OTHERS PRIOR TO CONSTRUCTION UNLESS THE PLANS SPECIFICALLY CALL FOR THEIR ADJUSTMENT BY THE CONTRACTOR. EXISTING UTILITIES AND THEIR LOCATION, AS SHOWN ON THE PLANS, REPRESENT THE BEST INFORMATION OBTAINABLE AND DESIGN. THE CONTRACTOR WILL BE REQUIRED TO WORK AROUND EXISTING UTILITIES WITHIN THE RIGHT-OF-WAY WHICH DO NOT CONFLICT WITH PROPOSED CONSTRUCTION.
- THE CONTRACTOR SHALL BE RESPONSIBLE FOR PRESERVING PROPERTY IRONS. THE CONTRACTOR SHALL BE REQUIRED TO RE-ESTABLISH ANY PROPERTY IRONS WHICH ARE DAMAGED OR DESTROYED BY HIS CONSTRUCTION OPERATIONS. SUCH IRONS SHALL BE RE-ESTABLISHED BY A LICENSED LAND SURVEYOR OR A LICENSED PROFESSIONAL ENGINEER IN ACCORDANCE WITH STATE LAWS. ALL COSTS FOR THIS WORK SHALL BE SUBSIDIARY TO THE OTHER ITEMS OF WORK.
- RUBBLE FROM THE REMOVAL OF MISCELLANEOUS STRUCTURES AND EXCESS EXCAVATION WHICH IS TO BE WASTED SHALL BE DISPOSED OF ON SITES TO BE PROVIDED BY THE CONTRACTOR. THESE SITES SHALL BE APPROVED BY THE ENGINEER AS TO SUITABILITY, APPEARANCE AND SITE LOCATION. LOCATIONS THAT, IN THE OPINION OF THE ENGINEER, WILL LEAVE AN UNSIGHTLY APPEARANCE WILL NOT BE APPROVED.
- CONTRACTOR SHALL PROVIDE POSITIVE DRAINAGE AWAY FROM ALL MANHOLE COVERS.
- THE CONTRACTOR SHALL GIVE ALL PROPERTY OWNERS AND/OR TENANTS OF DEVELOPED PROPERTY ADJACENT TO THE CONSTRUCTION OF THIS PROJECT A MINIMUM OF TEN (10) DAYS ADVANCE NOTICE PRIOR TO START OF CONSTRUCTION.
- PAVEMENT REMOVAL AND/OR REPLACEMENT WILL BE MEASURED AND PAID FOR ON THE LINEAL FOOT BASIS AS MEASURED ALONG THE CENTERLINE OF THE SEWER REGARDLESS OF WIDTH OR THICKNESS. MINIMUM LIMITS OF SUCH PAVEMENT REMOVAL AND REPLACEMENT SHALL BE ONE FOOT BEYOND THE LIMITS OF THE EXCAVATION MADE FOR THE SEWER OR THE STRUCTURE, EXCEPT WHEN THE LINES OF REMOVAL ARE WITHIN THREE (3) FEET OF AN EXISTING JOINT. THE LIMITS OF REMOVAL SHALL BE EXTENDED TO THE EXISTING JOINT. REMOVAL AND REPLACEMENT OF EXISTING PAVEMENT SHALL CONFORM TO THE APPLICABLE SECTIONS OF THE CITY OF WICHITA STANDARD SPECIFICATIONS.
- THE CONTRACTOR IS REQUIRED TO TAKE APPROPRIATE MEASURES TO INSURE THAT ANY BRICK, CONCRETE, OR LIME DEBRIS DOES NOT ENTER THE EXISTING SANITARY SEWER PIPELINES DURING CONSTRUCTION OPERATIONS REQUIRED TO CONNECT THE NEW 8" PIPE TO THE EXISTING MANHOLE. ALL SUCH DEBRIS SHALL BE DISPOSED OF AS DIRECTED IN GENERAL NOTE NO. 7 ABOVE.
- ALL AREAS DISTURBED BY THE CONSTRUCTION OF THE IMPROVEMENTS UNDER THIS CONTRACT NORTH OF THE NORTH CURB LINE OF 35TH STREET SOUTH SHALL BE REPLANTED WITH GRASS IN ACCORDANCE WITH APPLICABLE SECTIONS OF THE CITY OF WICHITA STANDARD SPECIFICATIONS. COSTS FOR REPLANTING GRASS SHALL BE CONSIDERED SUBSIDIARY TO THE OTHER ITEMS OF WORK.
- THE 2" WATER MAIN AT LINE NO. 3, STA. 0+30+ WILL BE RAISED BY THE WICHITA WATER DEPARTMENT. AT LEAST 48 HOURS PRIOR TO BEGINNING CONSTRUCTION THE CONTRACTOR SHALL CONTACT MR. BRUCE CLUCK, WATER MAINS SUPERVISOR AT 268-4908 TO ADVISE HIM OF PROJECT START-UP.
- THE 4" GAS MAIN AT LINE NO. 3, STA. 0+25+ WILL BE RAISED BY KPL/GAS SERVICE UNDER PRIVATE CONTRACT PRIOR TO SANITARY SEWER CONSTRUCTION. AT LEAST 48 HOURS PRIOR TO BEGINNING THE SANITARY SEWER CONSTRUCTION THE CONTRACTOR SHALL CONTACT KPL/GAS SERVICE AT 263-9895 TO REQUEST THEM TO UNCOVER THE RELICATED 4" GAS MAIN.



PRECAST SHALLOW MANHOLE TYPE 'P'



CAST-IN-PLACE SHALLOW MANHOLE TYPE 'C'

NOTE:  
ALL MANHOLE FRAMES AND COVERS INSTALLED THIS PROJECT SHALL BE DEETER NO. 1261, OR APPROVED EQUAL, TYPE FRAME WITH SELF-SEALING COVER AND CLOSED PICKHOLES. THE CONTRACTOR SHALL SUPPLY TO THE OWNER ONE (1) REPLACEMENT GASKET FOR EACH SELF-SEALING COVER.

	No.	Revision	By	Date	
	LATERAL 36, MAIN 3 SANITARY SEWER NO: 22 <b>KEY MAP AND PLAT</b> MICHAEL E. LINDEBAK, P.E. - CITY ENGINEER CITY OF WICHITA PROJECT NO. 468-76-245-81873-000-000-001				
	<b>PROFESSIONAL ENGINEERING CONSULTANTS, P.A.</b> ENGINEERS WICHITA, KANSAS				
	Designed by	DLM, RFJ	Job No.	54-06615-1	Sht. 2 of 5
	Drawn by	DMM	Date	March, 1997	

FILMED FROM THE BEST AVAILABLE COPY





# MANHOLE FRAME AND COVER DETAIL

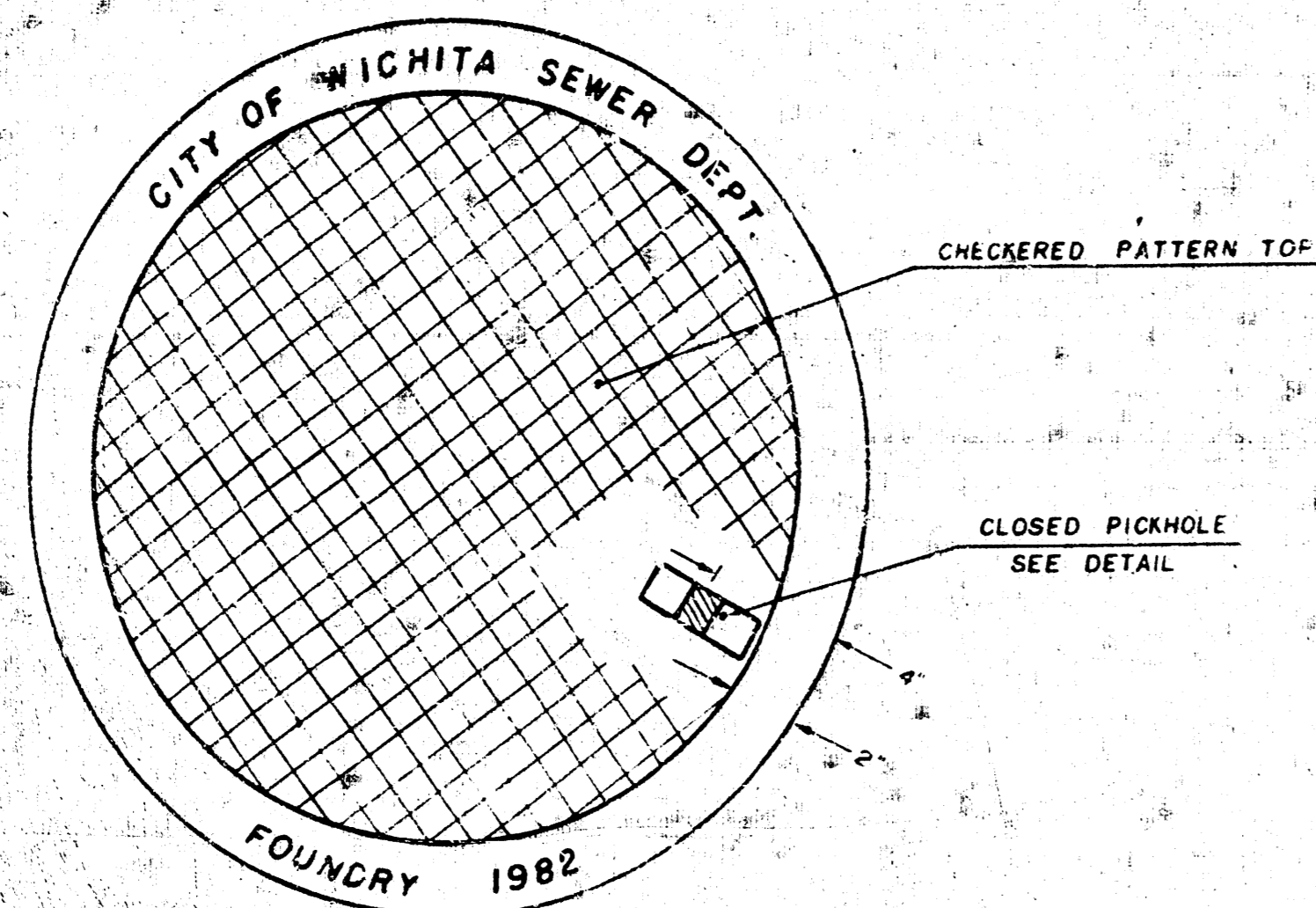
ADOPTED AS STANDARD DESIGN

BY

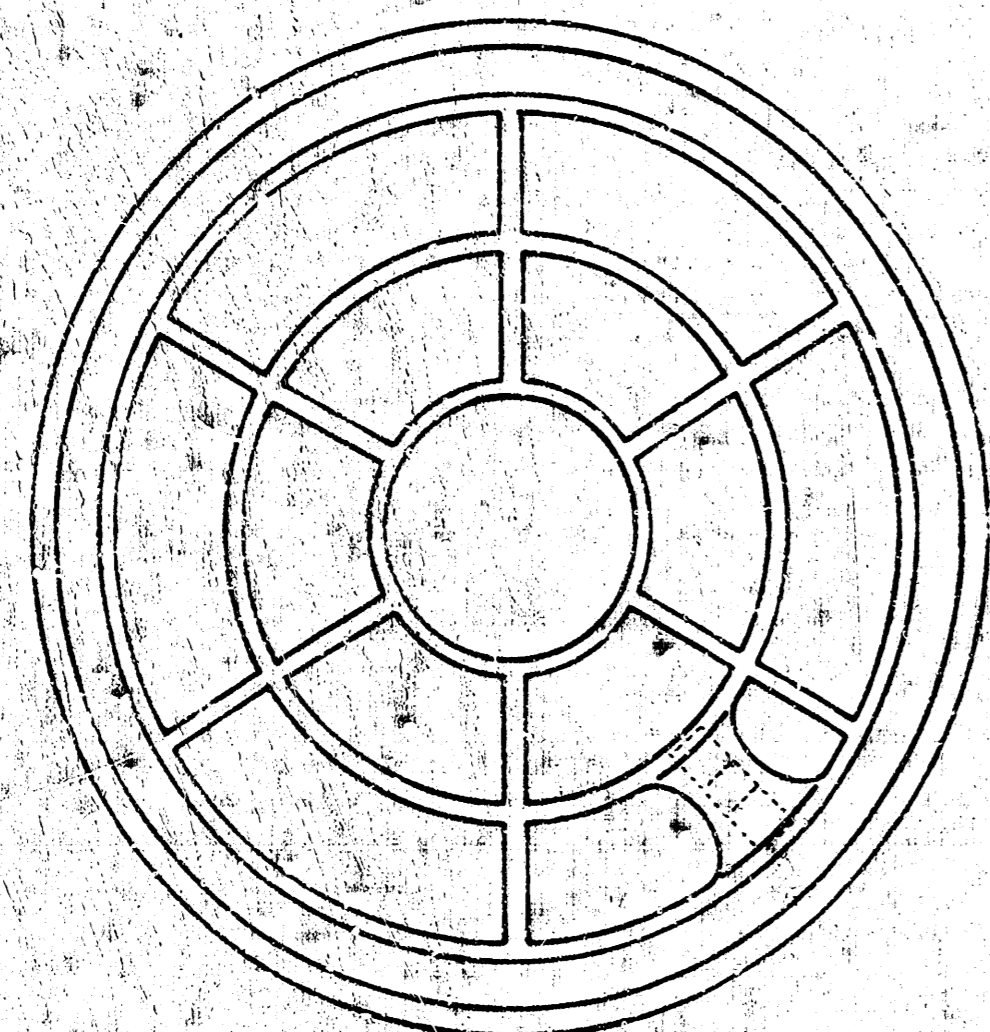
City of Wichita, Kansas

## MANHOLE COVER

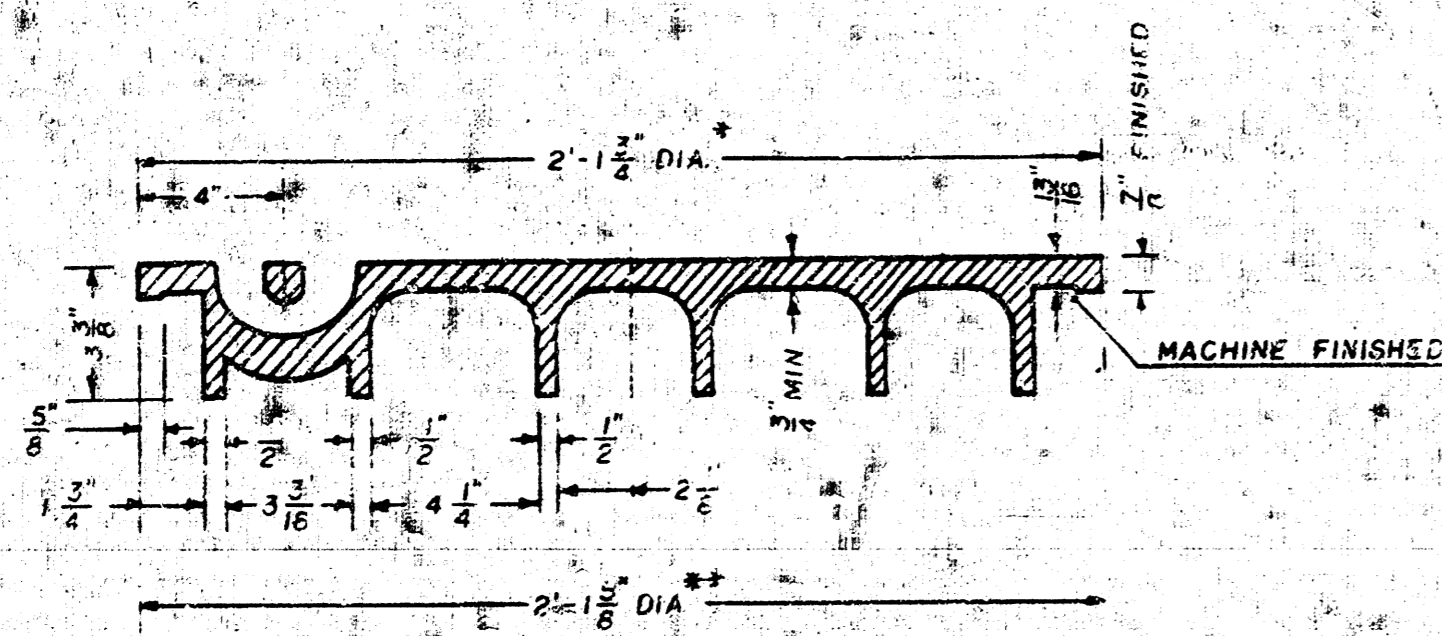
Weight: 180 Lbs.



TOP VIEW



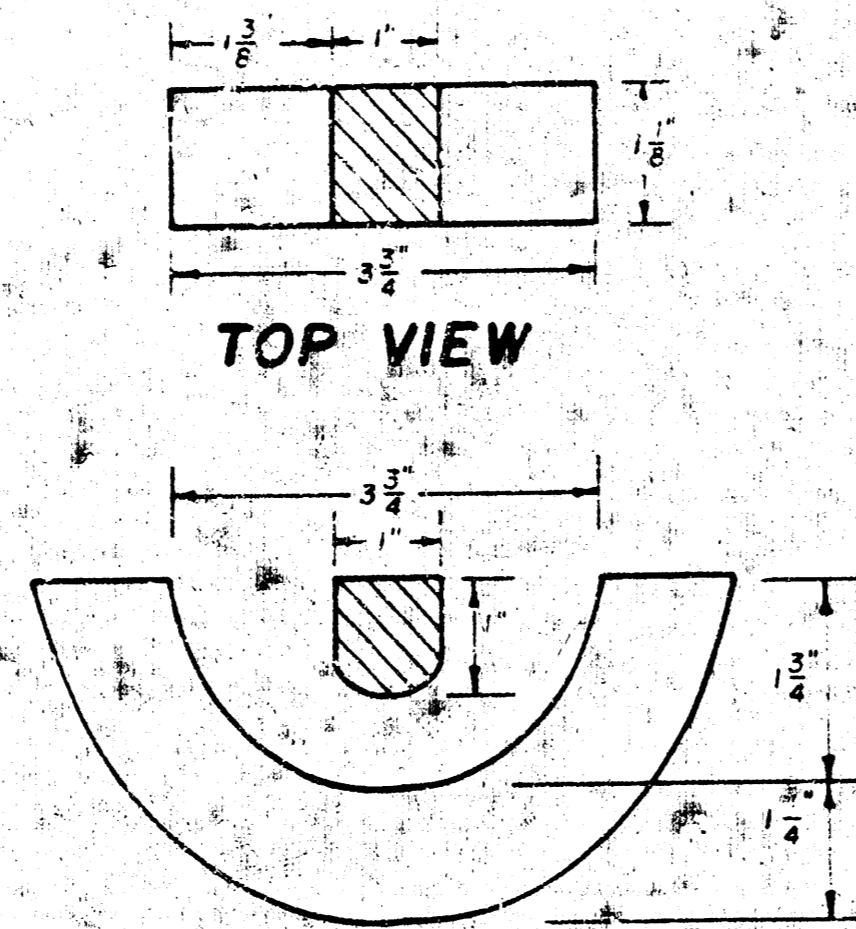
BOTTOM VIEW



SECTION VIEW

\* OUTSIDE DIA. TOP OF COVER  
 \*\* OUTSIDE DIA. BOTTOM OF COVER

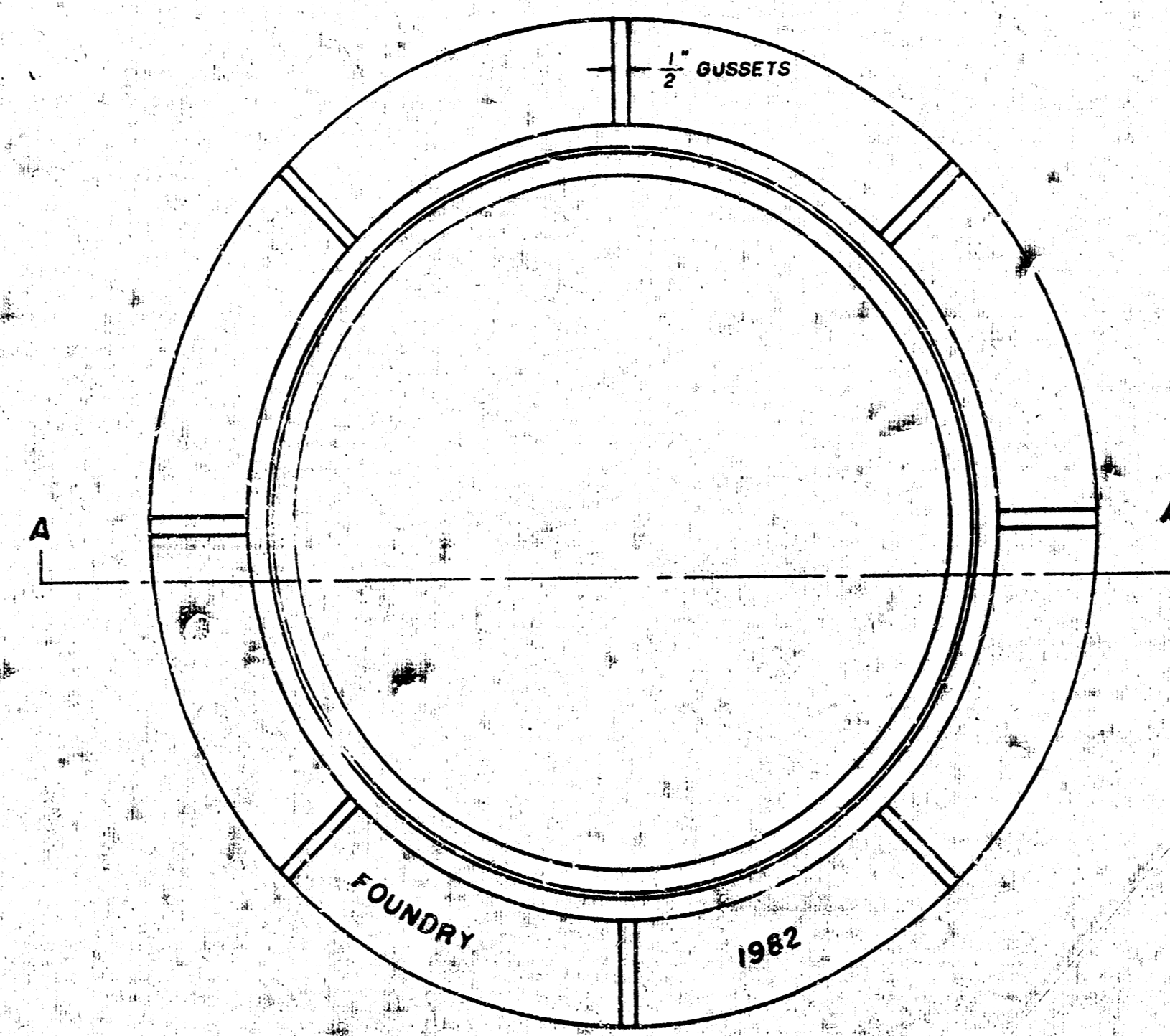
## PICKHOLE DETAIL



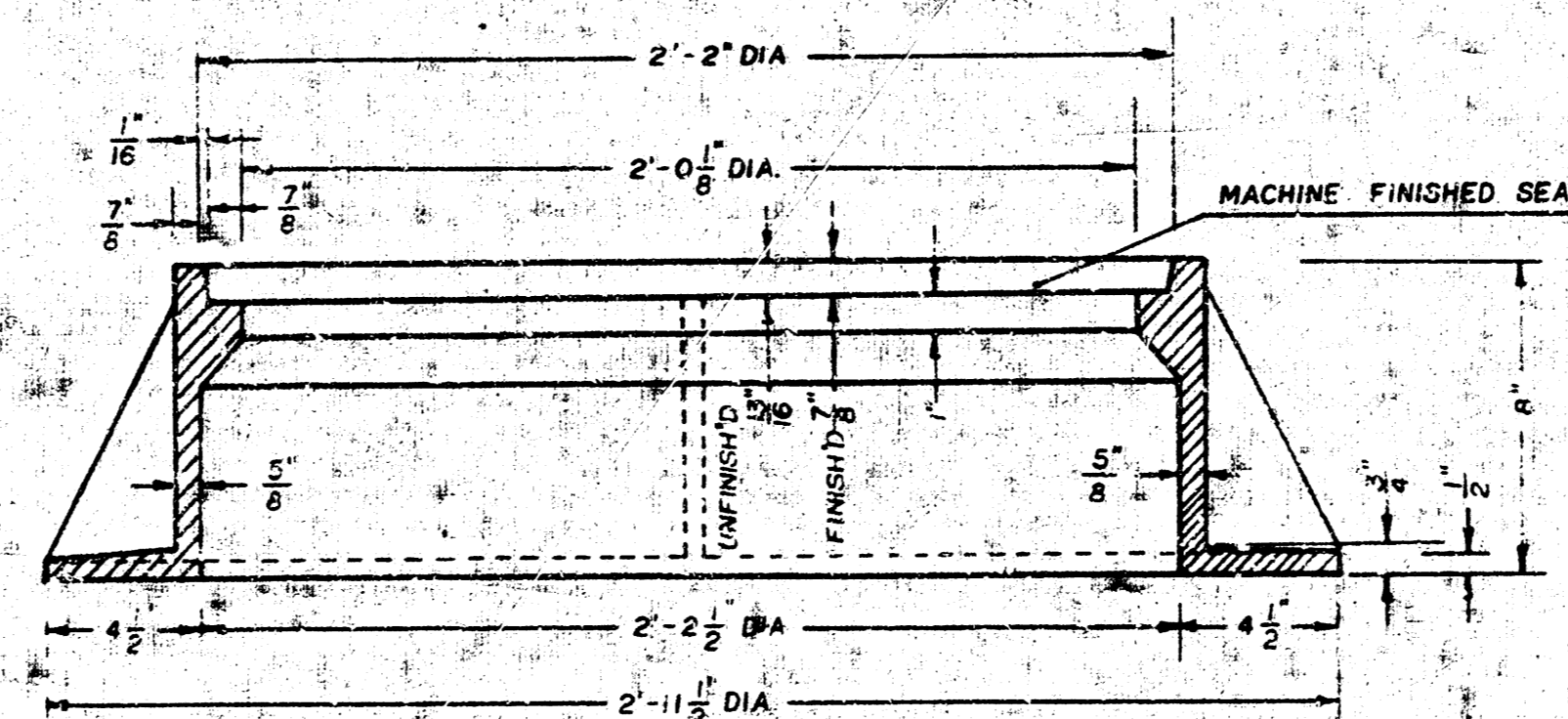
SECTION VIEW

## MANHOLE FRAME

Weight: 240 Lbs.



TOP VIEW



SECTION A-A

### GENERAL NOTES

1. MANHOLE CASTINGS SHALL BE MANUFACTURED USING GOOD QUALITY GRAY IRON CONFORMING TO CLASS 30 OF A. S. T. M. DESIGNATION A-48. DIMENSIONS AND WEIGHTS SHOWN ON THE DETAILED DRAWINGS SHALL BE CONSIDERED AS MINIMUM REQUIREMENTS AND ANY DEVIATIONS FROM THE DIMENSIONS SHOWN MUST BE SPECIFICALLY APPROVED. THE FINISHED CASTINGS SHALL BE OF UNIFORM QUALITY, FREE FROM BLOWHOLES, POROSITY, HARD SPOTS, SHRINKAGE DISTORTIONS OR OTHER DEFECTS.
2. MANHOLE CASTINGS SHALL BE COATED WITH AN ASPHALT PAINT RESULTING IN A SMOOTH, TOUGH AND TENACIOUS COATING WHICH IS NOT BRITTLE OR TACKY.
3. MANHOLE CASTINGS SHALL BE MANUFACTURED SUCH THAT A COVER MANUFACTURED BY ANY ONE FOUNDRY WILL FIT INTERCHANGEABLY INTO A FRAME MANUFACTURED BY ANOTHER FOUNDRY AND STILL MEET ALLOWABLE CLEARANCES AND NON-ROCKING REQUIREMENTS. THIS WILL REQUIRE MANUFACTURING OF THE MATCHING FACES ON THE COVER AND THE FRAME TO CLOSE TOLERANCES.
4. THE OUTSIDE CIRCUMFERENCE OF THE VERTICAL FACE OF THE COVER AND THE INSIDE CIRCUMFERENCE OF THE VERTICAL FACE IN THE FRAME RECESS SHALL BE MANUFACTURED TO TOLERANCES SUCH THAT THE CLEARANCE BETWEEN THE COVER AND FRAME WILL NOT EXCEED 1/8" AT ANY POINT AROUND THE CIRCUMFERENCE OF THE COVER. THE SEATING SURFACES BETWEEN THE COVER AND FRAME SHALL BE MACHINED SUCH THAT THESE SURFACES WILL MAKE FULL CONTACT FOR THEIR FULL CIRCUMFERENCE TO PRECLUDE THE COVER FROM ROCKING IN THE FRAME.
5. THE MANHOLE FRAME AND COVER SHALL BE MARKED WITH LETTERING INDICATING THE NAME OF THE MANUFACTURER AND THE YEAR WHEN THE COVER OR FRAME WAS CAST. THE COVER SHALL BE FURTHER IDENTIFIED WITH REGARDS TO OWNERSHIP USING LETTERS AT LEAST 1" IN HEIGHT. THIS IDENTIFICATION SHALL BE "CITY OF WICHITA SEWER DEPARTMENT". THE WORD DEPARTMENT MAY BE ABBREVIATED. THE TEXTURE OF THE TOP SURFACE OF THE COVER SHALL BE MANUFACTURED TO A CHECKERED PATTERN DESIGN AS INDICATED ON THE DRAWINGS. SMOOTH BLOCKOUTS SHALL BE UTILIZED TO HIGHLIGHT THE LETTERING ON THE COVER SURFACE. THE TOTAL AREA OF SMOOTH SURFACE BLOCKOUT SHALL NOT EXCEED THE AREA AS INDICATED ON THE DRAWING. POSITIONING OF SMOOTH BLOCKOUTS AND LETTERING MAY VARY FROM THAT SHOWN ON THE DETAILED DRAWING.

### NOTE:

ALL MANHOLE FRAMES AND COVERS INSTALLED THIS PROJECT SHALL BE DEETER NO. 1261, OR APPROVED EQUAL, TYPE FRAME WITH SELF-SEALING COVER AND CLOSED PICKHOLES. THE CONTRACTOR SHALL SUPPLY TO THE OWNER ONE (1) REPLACEMENT GASKET FOR EACH SELF-SEALING COVER.