

PRIVATE STORM SEWER

LOT 1, BLOCK 1, SISTERS OF ST. JOSEPHS 2ND ADDITION TO SERVE THE SISTERS OF ST. JOSEPHS NEW APARTMENT BUILDING PRIVATE PROJECT NUMBER 1798 PPS (607861)

GENERAL NOTES

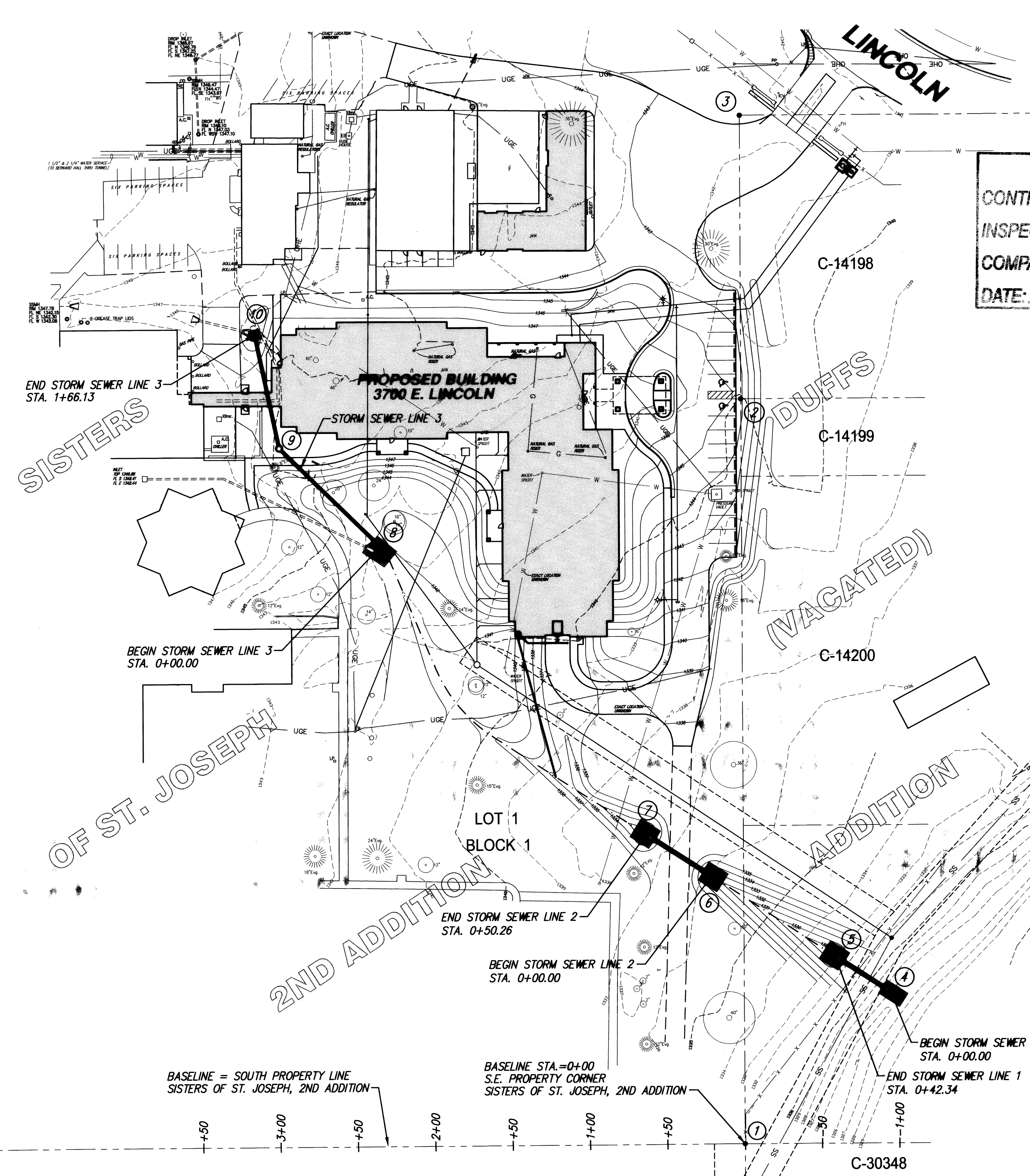
- Contractor will be required to provide a minimum advance notice of forty-eight (48) hours to utility companies prior to starting any excavation as follows:

Kansas One-Call	687-2470
-----------------	----------

The Contractor must notify the following in case of an emergency:

Cox Communications
 Kansas Gas Service
 Westar
 Aquila Energy
 Southwestern Bell Telephone Company
 City of Wichita Water Department
 City of Wichita Sewer Maintenance
- Existing utilities and their location, as shown on the plans, represent the best information obtainable for design. Location information has been obtained from the various utility companies and is either from company record drawings or company-provided field locations. The Contractor will be required to work around existing utilities within the right-of-way which do not conflict with proposed construction.
- This project is to be constructed in accordance with City of Wichita Standard Specifications for the Construction of City Projects, and Policy on Construction of Public Works Improvements by Private Contract.
- No work shall begin on this project before required bonds are submitted to the City of Wichita, and the project inspector has been notified.
- All areas of public R/W disturbed by construction of this project are to be restored in accordance with Administrative Regulation AR 78 of the City of Wichita.
- Trench backfill to be compacted to minimum of 98% std. density (ASTM D-698) to existing grade.
- Traffic will not be affected by construction of this project.
- Erosion control will be handled by the General Contractor as part of the erosion control master plan for this site.

COORDINATE CONTROL TABLE			
CONTROL NO.	DESCRIPTION	NORTHING	EASTING
①	S.E. COR. LOT 1, BLOCK 1 (3/4" I.P.)	19337.44	20000.82
②	3/4" I.P.	19817.49	20000.20
③	3/4" I.P.	20000.00	20000.00
④	24" END SECTION	19435.07	20095.31
⑤	24" END SECTION	19457.91	20059.66
⑥	24" END SECTION	19509.95	19980.10
⑦	24" END SECTION	19537.07	19937.78
⑧	15" END SECTION	19723.22	19766.81
⑨	CENTER MANHOLE W/ BEEHIVE INLET	19786.71	19701.70
⑩	CENTER 2'x2' DROP INLET	19860.28	19686.19



AS BUILTS:

CONTRACTOR: McCullough Exc.
 INSPECTOR: LARRY GANN
 COMPANY: K.F. Miller Eng.
 DATE: 5/27/08

- ### INDEX OF SHEETS
- (CITY SUBMITTAL INDEX)
- INDEX SHEET
 - SITE GRADING PLAN
 - SITE GRADING PLAN
 - STORM SEWER PLAN & PROFILE (LINE 1 & 2)
 - STORM SEWER PLAN & PROFILE (LINE 3)
 - SHALLOW TYPE P MANHOLE
 - 2'x2' DROP INLET

BENCHMARKS

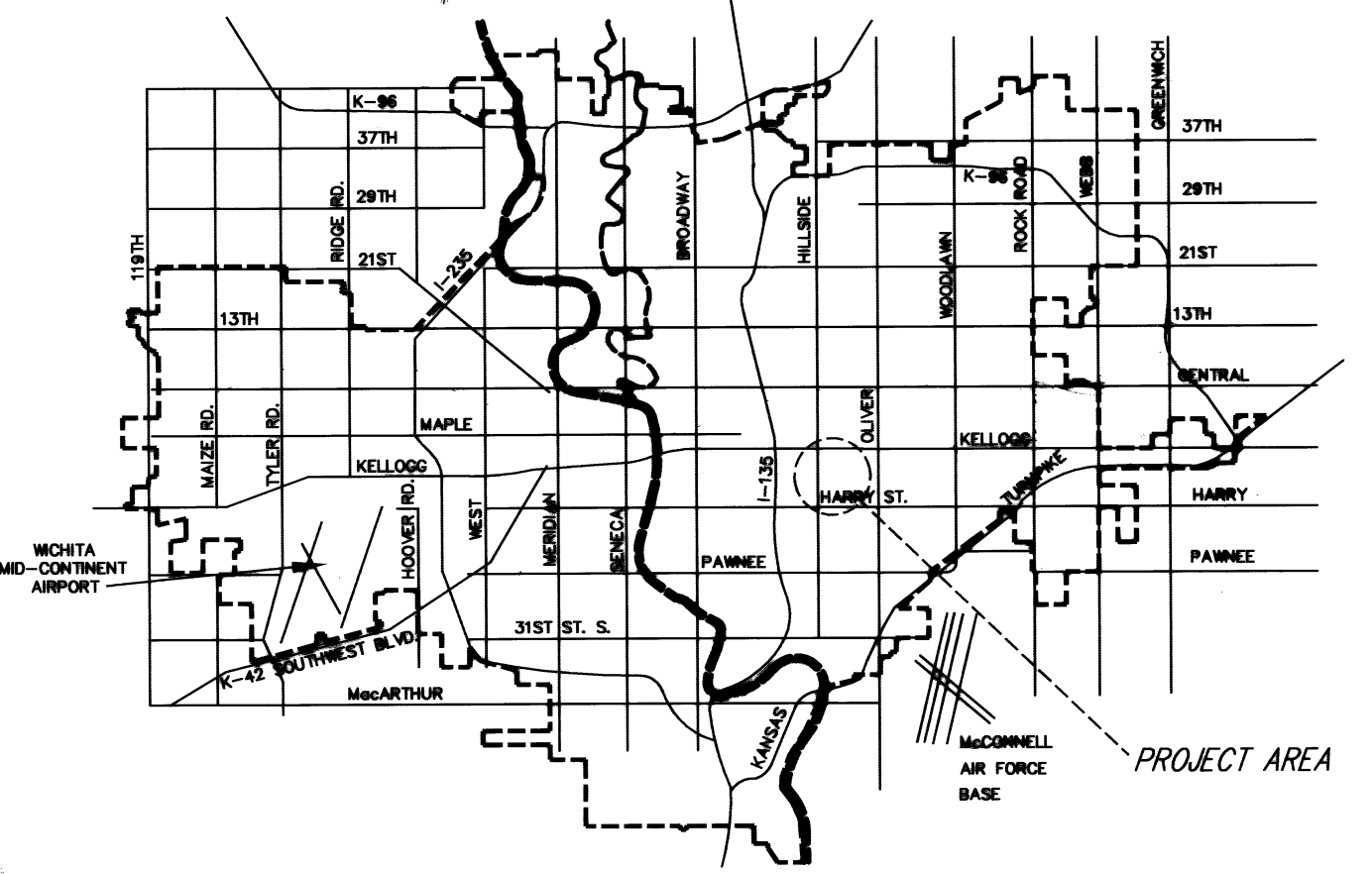
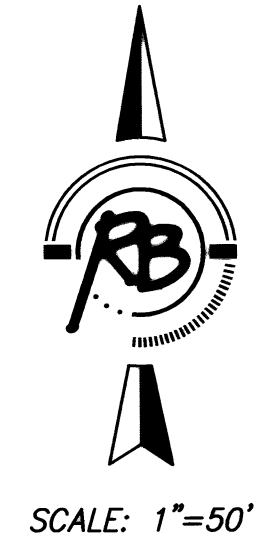
CITY OF WICHITA
 BLUFF & LINCOLN -IN TURN ISLAND
 29.5 W. OF E. BLUFF, 44.5 S. OF E. MORRIS
 TO EAST 24' S.W. OF L.P.
 ELEV.=1349.65

APPROVED AS NOTED
BY CITY ENGINEER OF WICHITA

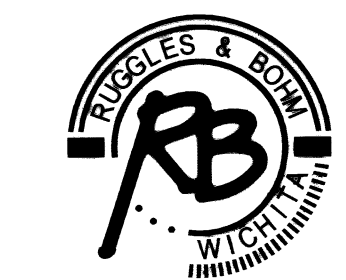
Sanitary Sewers _____
 Storm Sewers VRH 8/1/07
 Driveway Approaches _____
 Water Mains _____
 Paving _____

NOTE TO CONTRACTORS

Inspection and testing for this project are to be provided by a Licensed Consulting Engineering Firm under contract with the Owner/Developer. Said inspection to be in accordance with the City of Wichita standard construction engineering practices and certified by a Licensed Professional Engineer. No work shall be performed in dedicated easements or public right-of-way by the Contractor without such inspection, nor shall any work be commenced without written authorization by the City Engineer.



CITY OF WICHITA, KANSAS
JAMES L. ARMOUR, P.E., CITY ENGINEER



Ruggles & Bohm, P.A.
 Engineering, Surveying, Land Planning

924 North Main
 Wichita, Kansas 67203
 www.rbkansas.com

(316) 264-8008
 (316) 264-4621 fax
 E-mail: info@rbkansas.com