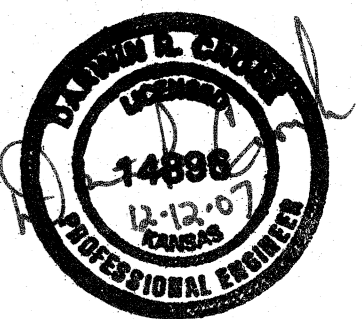
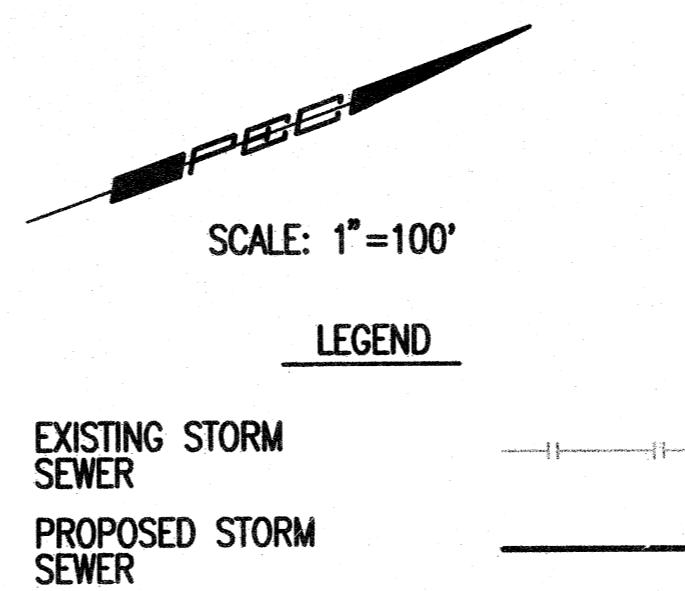
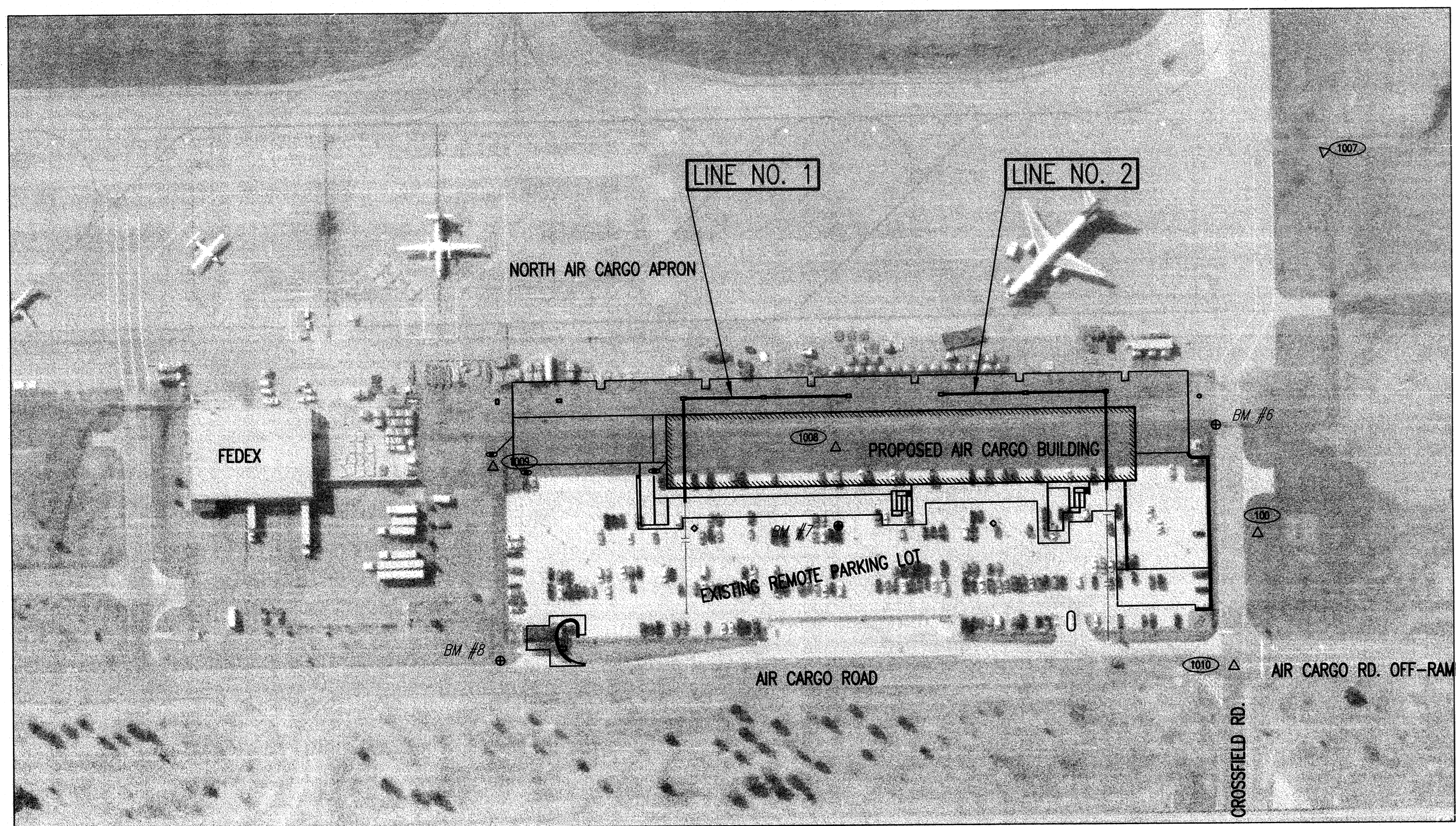


Gossen Livingston
 Architecture
 420 South Emporia
 Wichita, KS 67202
 Tel: (316) 265-9367
 Fax: (316) 265-5646
 Email: architect@gossenlivingston.com



2007 Gossen Livingston Associates, Inc.
 All work herein is the exclusive property of Gossen Livingston Associates, Inc. and is not to be copied or used in any way without the express written consent of Gossen Livingston Associates, Inc. All drawings, specifications, notes, designs and arrangements appearing herein constitute the original and unpublished work of:
 Gossen Livingston Associates, Inc.

**NORTH AIR CARGO FACILITY
 MID-CONTINENT AIRPORT
 Wichita, Ks.**



- GENERAL NOTES**
- ALL CONSTRUCTION AND MATERIALS TO COMPLY WITH THE CONSTRUCTION SPECIFICATIONS.
 - ALL ELEVATIONS SHOWN ARE BASED ON USGS DATUM (NGVD29) (USGS-1187.4 = CITY DATUM)
 - AT LEAST 72 HOURS PRIOR TO BEGINNING EXCAVATION (EXCLUDING WEEKENDS AND HOLIDAYS), THE CONTRACTOR SHALL CONTACT THE KANSAS ONE-CALL SYSTEM, A UTILITY LOCATION SERVICE, AT (316) 687-2470 TO REQUEST THE LOCAL UTILITY COMPANIES MARK ANY EXISTING LINES WITHIN THE PROJECT AREA.
 - UNDERGROUND UTILITY SERVICE LINES ARE TO BE ADJUSTED AS NECESSARY BY OTHERS PRIOR TO CONSTRUCTION UNLESS THE PLANS SPECIFICALLY CALL FOR THEIR ADJUSTMENT BY THE CONTRACTOR OR UNLESS THE PLANS SPECIFICALLY IDENTIFY A UTILITY TO BE ADJUSTED BY ITS OWNER DURING CONSTRUCTION. EXISTING UTILITIES AND THEIR LOCATIONS, AS SHOWN ON THE PLANS, REPRESENT THE BEST INFORMATION OBTAINABLE FOR THE DESIGN. THE CONTRACTOR WILL BE REQUIRED TO WORK AROUND EXISTING UTILITIES WITHIN THE RIGHT-OF-WAY WHICH DO NOT CONFLICT WITH PROPOSED CONSTRUCTION.
 - THE CONTRACTOR SHALL BE RESPONSIBLE FOR PRESERVING LEASE IRONS. THE CONTRACTOR WILL BE REQUIRED TO RE-ESTABLISH ANY IRONS WHICH ARE DAMAGED OR DESTROYED BY HIS CONSTRUCTION OPERATIONS. SUCH IRONS SHALL BE RE-ESTABLISHED BY A LICENSED LAND SURVEYOR IN ACCORDANCE WITH STATE LAWS. NO PAYMENT WILL BE MADE FOR THIS WORK.
 - CONTRACTOR SHALL PROVIDE POSITIVE DRAINAGE AWAY FROM ALL MANHOLE COVERS.
 - ALL LAWN/TURF AREAS DISTURBED BY CONSTRUCTION OF THE PROPOSED IMPROVEMENTS SHALL BE RESTORED IN ACCORDANCE WITH THE SPECIFICATIONS.
 - RUBBLE FROM THE REMOVAL OF MISCELLANEOUS STRUCTURES INCLUDING ANY TREES REMOVED, TREE TRIMMINGS, AND EXCESS EXCAVATION WHICH IS TO BE WASTED SHALL BE DISPOSED OF ON SITES PROVIDED BY THE CONTRACTOR. THESE SITES SHALL ALSO BE APPROVED BY THE ENGINEER AS TO SUITABILITY, APPEARANCE, AND SITE LOCATION. LOCATIONS THAT, IN THE OPINION OF THE ENGINEER, WILL LEAVE AN UNSIGHTLY APPEARANCE WILL NOT BE APPROVED. ALL DISPOSAL SITES MUST BE APPROVED BY THE KANSAS DEPARTMENT OF HEALTH AND ENVIRONMENT. MATERIAL EITHER STOCKPILED OR DISPOSED OF IN A FLOOD PLAIN WILL REQUIRE A KANSAS STATE BOARD OF AGRICULTURE PERMIT. ANY MATERIAL DUMPED IN WATERS OF THE UNITED STATES OR WETLANDS IS SUBJECT TO U.S. CORPS. OF ENGINEERS PERMITTING REGULATIONS. ANY MATERIAL BURIED OR STOCKPILED BEYOND APPROVED CONSTRUCTION LIMITS MAY REQUIRE ARCHAEOLOGICAL INVESTIGATIONS UNLESS BURIED IN A PREVIOUSLY APPROVED DISPOSAL LOCATION.
 - THE CONTRACTOR SHALL PREVENT ANY CONSTRUCTION DEBRIS FROM ENTERING THE EXISTING STORM WATER SYSTEM DURING CONSTRUCTION.
 - CONTRACTOR IS REQUIRED TO MAINTAIN CONTINUOUS FLOW IN EXISTING STORM WATER MAINS AT ALL TIMES.
 - THE CONTRACTOR SHALL SEED ALL AREAS DISTURBED BY CONSTRUCTION ACTIVITIES WITH TEMPORARY RYE GRASS. RYE GRASS SEED SHALL BE PLANTED AT A MINIMUM RATE OF SIX (6) POUNDS PER ONE THOUSAND (1,000) SQUARE FEET. THIS TEMPORARY SEEDING MAY BE OMITTED ONLY IF OTHER SEEDING IS REQUIRED IN ACCORDANCE WITH GENERAL NOTE NO. 9 ABOVE. TEMPORARY SEEDING OR PERMANENT SEEDING/SODDING SHALL BE APPLIED WITHIN 14 DAYS AFTER THE AREA HAS BEEN DISTURBED.
 - THE CONTRACTOR SHALL NOT BURY MANHOLES THAT HAVE RIM ELEVATIONS WHICH ARE LOWER THAN EXISTING GROUND AT THE MANHOLE. THE GROUND AROUND SUCH MANHOLES AND ALONG THE SEWER ALIGNMENT SHALL BE BACKFILLED TO THE APPROXIMATE ELEVATION OF THE PROPOSED GROUND ELEVATION SHOWN ON THE PLAN/PROFILE SHEETS. THE CONTRACTOR SHALL PROVIDE DRAINAGE AWAY FROM THESE MANHOLES AND SEWER LINES BY CONSTRUCTION OF TEMPORARY DITCHES OR SLOPING THE GROUND AS REQUIRED.
 - AT THE CONTRACTOR'S OPTION, RCP STORM SEWER PIPE REMOVED BY THE PROJECT AND IS IN GOOD CONDITION, AS DETERMINED BY THE ENGINEER, MAY BE REUSED ON THE PROJECT. PIPE NOT REUSED, SHALL BE SALVAGED TO THE OWNER AT A LOCATION ON THE AIRPORT.

CONTROL POINTS

CP#100- N-75,963.0390, E-22,051.0270
 1/2" BAR
 149.55' E, @ JOINT S END OF AIR CARGO RAMP
 15.21' S, N EDGE OF CONCRETE DRIVE TO GATE "A"
 48.47' NW, NE CORNER OF CONCRETE PAVEMENT

CP#101- N-75,368.7951, E-23,544.3851 (NOT SHOWN)
 1/2" BAR W/SRB SURVEY CAP IN MEDIUM S OF
 CROSSFIELD ROAD AND E OF S END OF AIRPORT ROAD
 16.75' W, @ CONCRETE JOINT S END OF AIRPORT ROAD
 14.45' NE, TO SW CORNER OF WHEEL CHAIR RAMP
 24.80' SE, SE TO NW FACE 15' LOCUST TREE

CP#1007- N-76,182.4032, E-21,672.9492
 1/2" BAR 1.5" W AND 2.0" S OF FENCE CORNER
 4.00' W, TO EAST EDGE ASPHALT PERIMETER ROAD
 57.23' S, TO NORTH END OF APRON

CP#1008- N-75,550.6902, E-21,795.2804
 1/2" BAR
 20.00' W, TO SECURITY FENCE RUNNING N-S
 IN-LINE, CONCRETE RUNNING E-W AT LIGHT POLE "C" IN
 SHUTTLE PARKING LOT.

CP#1009- N-75,181.2454, E-21,681.8841
 1/2" BAR
 35.60' W, TO SECURITY FENCE N-S
 31.15' E, PK NAIL NW CORNER OF FED EX PARKING LOT
 43.90' SE, PK NAIL W EDGE OF FED EX PARKING LOT
 12.45' N, WROUGHT IRON FENCE E-W

CP#1010- N-75,885.0800, E-22,182.2298
 1/2" PIPE IN THIMBLE
 IN @ INTERSECTION OF AIR CARGO ROAD AND CROSSFIELD
 ROAD
 NO TIES TAKEN

BENCHMARKS

BM #4- CHISELED V, ON NORTHEAST CORNER TRANSFORMER PAD ON WEST
 SIDE AIR CARGO ROAD 375'± NORTH OF CROSSFIELD ROAD. (NOT SHOWN)
 ELEV. = 1320.75

BM #6- CHISELED V ON SOUTH EDGE CONCRETE DRIVE AT GATE "A" 2.00'
 EAST OF SECURITY FENCE. ELEV. = 1327.01

BM #7- CHISELED V ON WEST SIDE OF CONCRETE PARKING LIGHT BASE "C"
 IN NORTH PARKING LOT (SHUTTLE LOT.) ELEV. = 1325.00

BM #8- CHISELED V ON WEST SIDE OF CONCRETE BASE OF STREET LIGHT ON
 WEST SIDE OF AIR CARGO ROAD NEAR THE SOUTHEAST CORNER OF NORTH
 PARKING LOT (SHUTTLE LOT.) ELEV. = 1322.76

No.	Revision	By	Date
AIR CARGO FACILITY MID-CONTINENT AIRPORT KEY MAP AND GENERAL NOTES JAMES L. ARMOUR, P.E. - CITY ENGINEER PRIVATE PROJECT NO. PPS (607861) Professional Engineering Consultants, P.A. 303 S. TOPEKA • WICHITA, KANSAS 67202 316-262-2691 • FAX 316-262-3003			
Designed by	DAR	Job No.	32-06026-259
Drawn by	DAR	Date	OCT 2007
		Sht.	of

**STORM SEWER
 KEY MAP**

Job No.	1049.200	C202
Date	12/12/07	
Drawn	DAR	
Checked	DAR	Dwg. of



Professional Engineering Consultants, P.A.
 303 S. TOPEKA • WICHITA, KANSAS 67202 • 316-262-2691 • FAX 316-262-3003
 www.pac1.com

Sheet No. 1 of 2
 Date: 12/12/07 10:49:20 AM
 File: S:\2007\1049200\CONSTRUCTION DRAWINGS\06026-0202-SPRKEY.MXD
 by: JZ
 12/12/07 10:49:20 AM