

# Street Paving for Manlo / 34th Street North

to serve

## MESA VERDE ADDITION - PHASE II

Manlo: From the East Line of Lot 4, Block B, East to the East Line of the Plat  
34th St. North From the East Line of Lot 5, Block A, East to the South Line of Manlo.

### CITY OF WICHITA, KANSAS

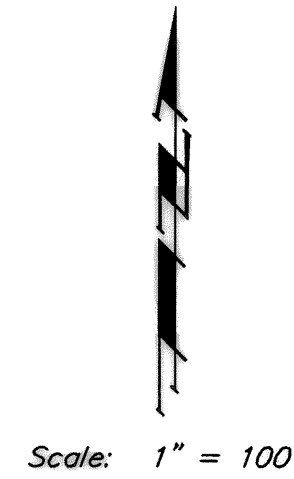
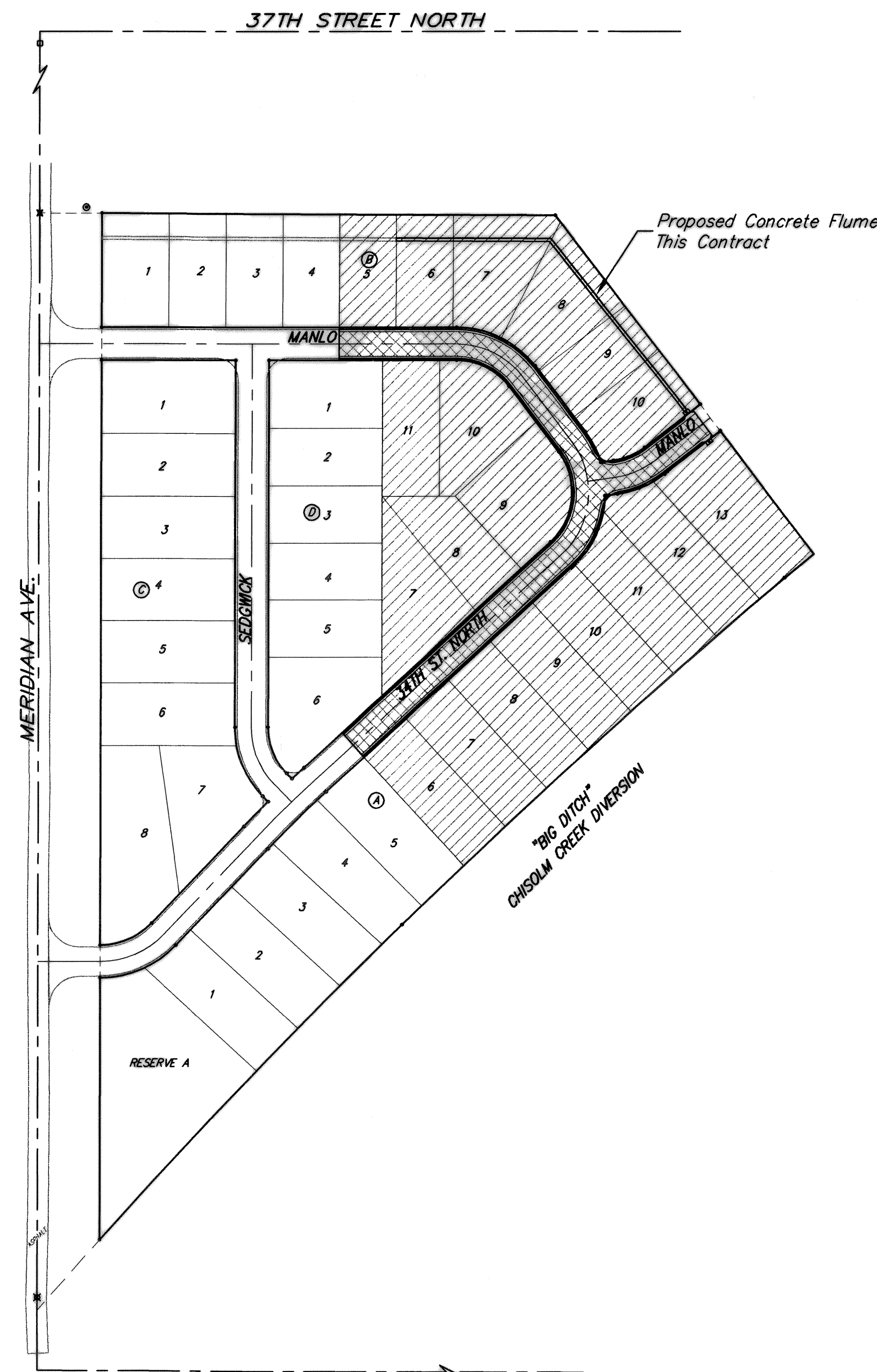
James L. Armour, P.E. City Engineer

Project Number

472-84482

O.C.A. Number

766211



### GENERAL NOTES:

- Contractor will be required to provide notice to utility companies a minimum of forty-eight (48) hours prior to any excavation, as follows:  
Kansas One-Call 687-2470  
The Contractor must notify the following in case of an emergency:  
Cox Communications 262-4270  
Kansas Gas Service 1-888-482-4950  
Westar Energy 383-8650  
Aquila Energy 1-800-303-0357  
SBC 268-2245  
City of Wichita Water Dept. 268-4563  
City of Wichita Sewer Maint. 268-4024  
City of Wichita Storm Sewer Maint. 268-4090  
City of Wichita Traffic Maint. 268-4034  
Conoco Phillips Pipeline Co. 1-877-267-2290  
Southern Star Pipeline Co. 529-6600  
Kinder-Morgan Pipeline Co. 1-888-844-5658
- Utility service lines, poles, valve boxes, meters, and etcetera are to be adjusted as necessary by others prior to construction unless the plans specifically call for their adjustment by the Contractor or unless the plans specifically identify a utility to be adjusted by its owner during construction. Existing utilities and their location, as shown on the plans, represent the best information obtainable for design. The Contractor will be required to work around existing utilities within the right-of-way which do not conflict with proposed construction.
- Rubble from the removal of miscellaneous structures and excess excavation which is to be wasted shall be disposed of on sites to be provided by the Contractor. These sites shall be approved by the Engineer as to suitability, appearance and site location. Locations, in the opinion of the Engineer, that will leave an unsightly appearance will not be approved. All disposal sites must be approved by the Kansas Department of Health and Environment. Material either stockpiled or disposed of in a flood plain would require a Kansas State Board of Agriculture permit. Any material dumped in waters of the United States or wetlands is subject to U.S. Corps. of Engineers permitting regulations. Any material buried or stockpiled beyond approved construction limits would require additional archaeological investigations unless buried in a previously approved borrow location.
- Trees and shrubs in public right-of-way which are in direct conflict with proposed new construction shall be removed by the Contractor with the Engineer's approval. Trees and shrubs which are not in direct conflict with proposed new construction shall be saved and protected from damage.
- The Contractor shall give all property owners and/or tenants of developed property abutting the construction of this project a minimum of ten (10) days notice prior to start of construction.
- The Contractor shall be responsible for preserving property irons. The Contractor will be required to re-establish any property irons which are damaged or destroyed by his construction operations. Such irons shall be re-established by a licensed land surveyor in accordance with state laws.
- Stockpile is available on-site (on Lots 7-11, Block A) from Phase I overage. Quantity is approximate and is not verified. Contractor shall complete Street R/W grading, then Easement grading prior to grading any Lot Areas to ensure sufficient material is available to complete work within Street R/W's and Easements. Any remaining material shall remain on site and be spread evenly, max. 1' depth, on the Lots outside of Easements and Rights of Way.
- All existing and proposed erosion control measures including silt fencing, erosion control mat, straw bales, inlet barriers, and const. entrance shall be maintained throughout construction by the contractor and until project is accepted by the City of Wichita. The on-site engineer shall complete weekly reports on the status of erosion control measures. The contractor shall be required to comply with maintenance and/or replacement of erosion control measures as determined by the on-site engineer until project is accepted by City of Wichita.
- All areas disturbed during construction shall be seeded at 300 lbs./acre with Rye Grass immediately following construction in that area. Contractor shall prepare ground per City Specifications.
- A saw cut of at least one-half the depth of existing surface courses or one-fourth the depth of the existing total pavement thickness shall be provided at locations where proposed construction abuts the existing surface course or pavement for which partial removal of that surface or pavement is required. Sawed joint to facilitate removal within three (3) feet of existing joints will not be permitted and for such instances the limits of removal shall extend to the existing joint. Such saw cuts will not be paid for directly and this cost shall be considered as subsidiary to the removal of the surface or pavement.
- The contractor shall adjust valve boxes as necessary to match proposed grade. Cost to be included in bid item, "Site Clearing & Restoration."
- Earthwork Cross Sections and Earthwork Quantities reflect topography as of 10/04. The Contractor shall satisfy himself with the Earthwork Quantities as bid for Excavation, Compacted Fill, and Mass Grading prior to bidding. No additional payments or change orders for earthwork will be accepted.
- The Developer of this project is Richard E. Lopez and may be reached at (316) 264-5372

### Sheet Index

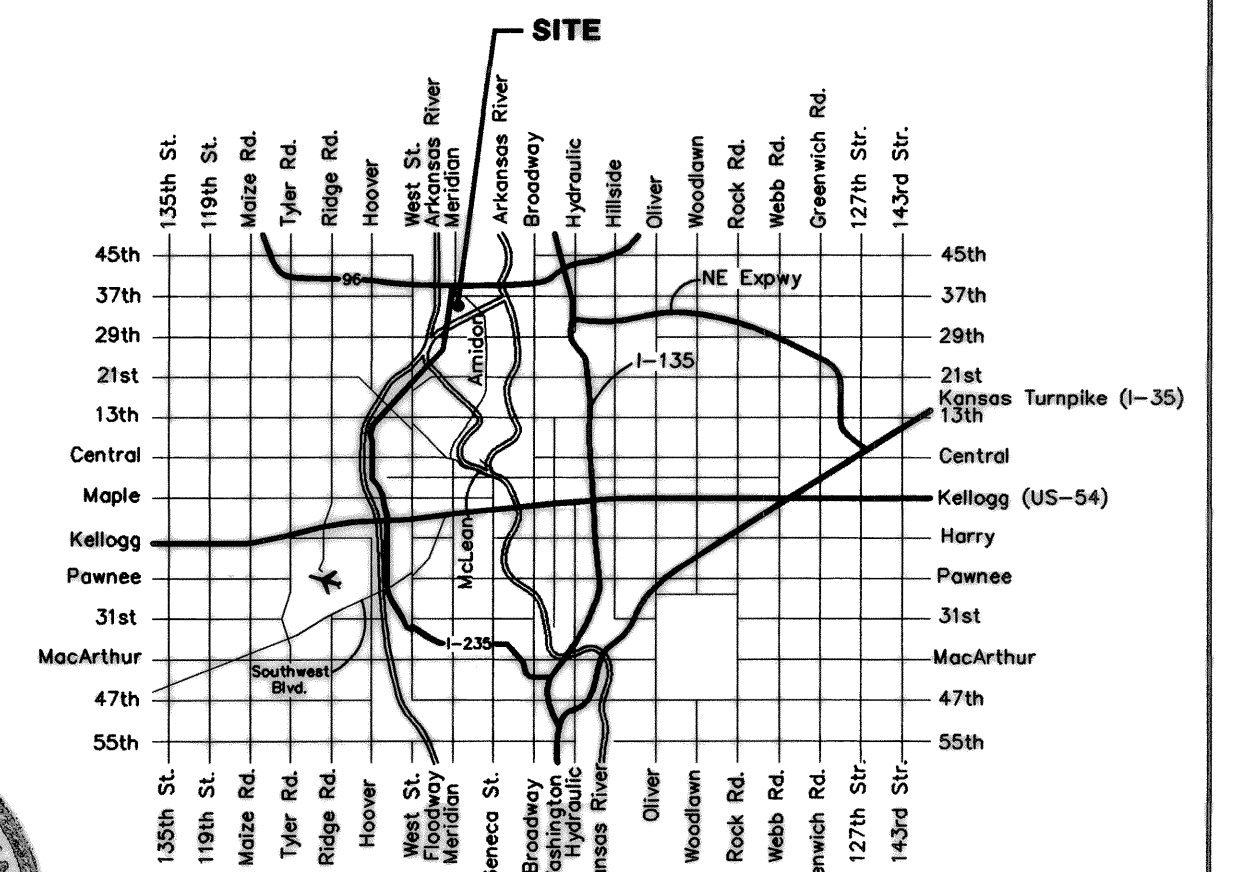
Title Sheet	1
29' Pavement Detail	2
Sign Detail	3
Manlo	4
34th Street North	5
Manlo	6
Mass Grading Plan	7
Erosion Control Plan	8
Erosion Control BMP Details	9-12
Earthwork Cross Sections	13-14
Coordinate Sheet	15
Copy of Plat	16

### Benchmarks

- BM # 1 City of Wichita Disc in the Northwest Corner of 37th Street North and Womer Elev. = 1324.06 MSL
- BM # 2 "C" Cut on the Top of Curb in the NE Corner of the Parking Lot for The Word of Life Church at 37th Street North & Meridian. Elev. = 1323.11 MSL
- BM # 3 RR Spike in the East Face of Light Pole at the Southwest Corner of 34th Street North & Meridian. Elev. = 1320.32 MSL

EARTH WORK TOTALS	(UNADJUSTED)		SEE GENERAL NOTE 7	
	Excavation	Compacted Fill	Loose Fill	
Mass Grading	29	-	2,114	
From Stockpile	3,320	-	-	
Street R/W's & Str Esmt's	369	558	846	
<b>Total</b>	<b>3,718</b>	<b>558</b>	<b>2,960</b>	

TOTAL PROJECT LENGTH  
855 L.F. = 0.16 Miles



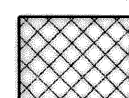
Vicinity Map



Benefit District



Proposed Streets



Baughman Company, P.A. 315 Ella St. Wichita, KS 67211 P 316-262-7271 F 316-262-0145  
ENGINEERING | SURVEYING | PLANNING | LANDSCAPE ARCHITECTURE