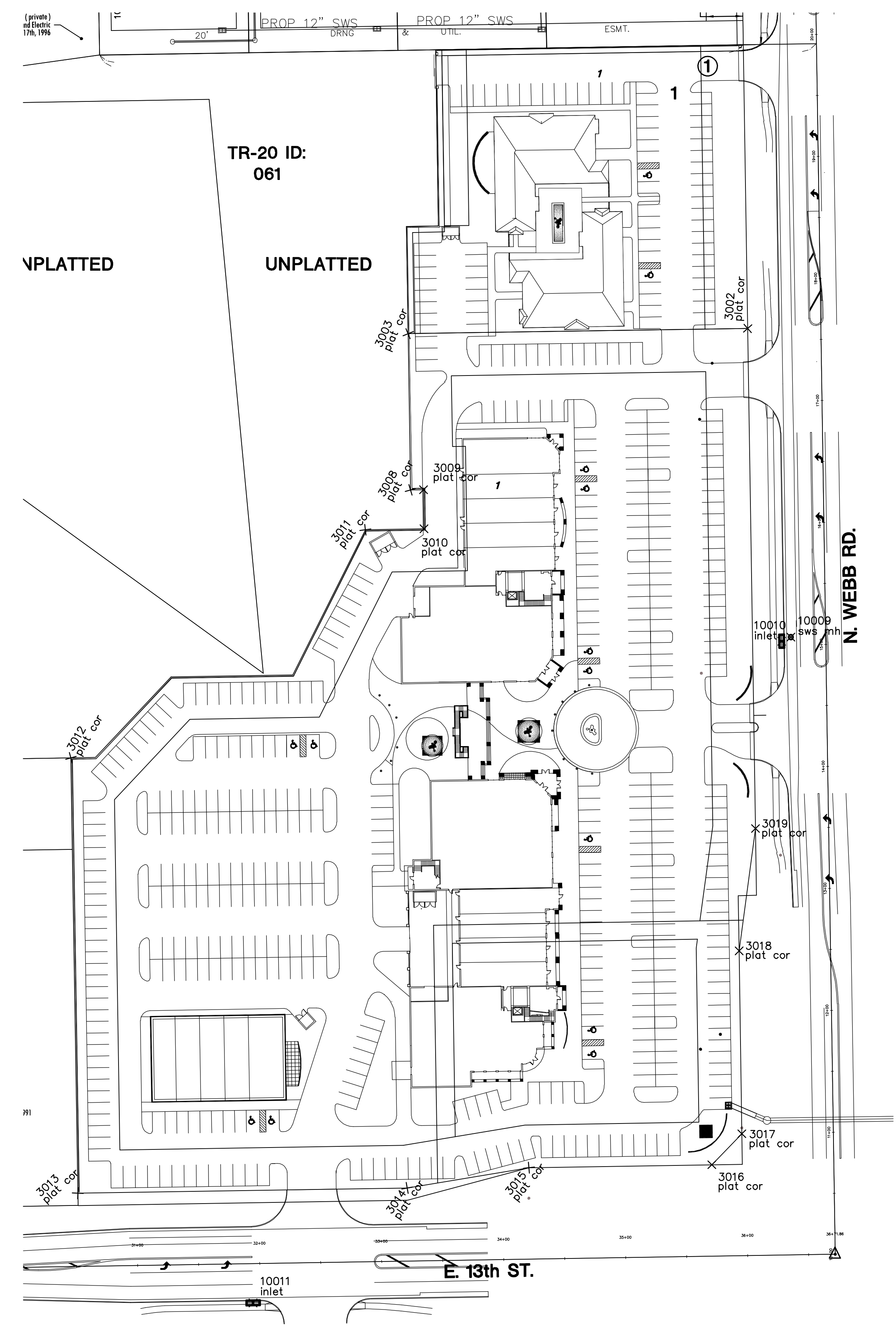
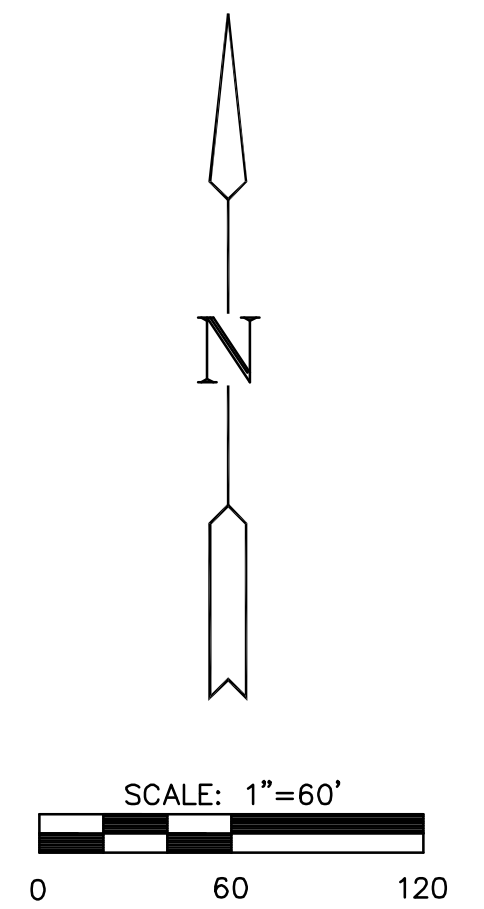


**PAVING AND INCIDENTAL DRAINAGE PLANS FOR
FOLIAGE CENTER ADDITION
WEBB ROAD LEFT TURN LANES**



PROPOSED PL POINTS			
Point #	Northing	Eastng	Desc.
3002	1695142.18	1680936.13	plat cor
3003	1695137.85	1680657.74	plat cor
3008	1695008.82	1680659.74	plat cor
3009	1695008.99	1680670.38	plat cor
3010	1694977.90	1680670.88	plat cor
3011	1694977.12	1680622.75	plat cor
3012	1694790.11	1680381.37	plat cor
3013	1694433.28	1680387.10	plat cor
3014	1694437.61	1680557.08	plat cor
3015	1694454.22	1680756.83	plat cor
3016	1694456.63	1680906.81	plat cor
3017	1694482.03	1680931.41	plat cor
3018	1694632.01	1680929.08	plat cor
3019	1694732.23	1680942.52	plat cor

PROPOSED SWS POINTS			
Point #	Northing	Eastng	Desc.
10009	1694888.18	1680971.53	sws mh
10010	1694885.80	1680864.05	inlet



PLOTTED: Friday, May 30, 2008 @ 11:56AM

BUBBLE MAP
SHEET TITLE
04274
PROJECT NUMBER

SRS
DESIGN BY
JWC
DRAWN BY
DFL
CHECKED BY

ISSUED
May 2008
REVISED

SHEET NO.
17 of 26

J:\CIVIL\04274\DWG\PAV\RESIDENTIAL\TURN LANES\WEBB ROAD\04274_BUBBLE.DWG