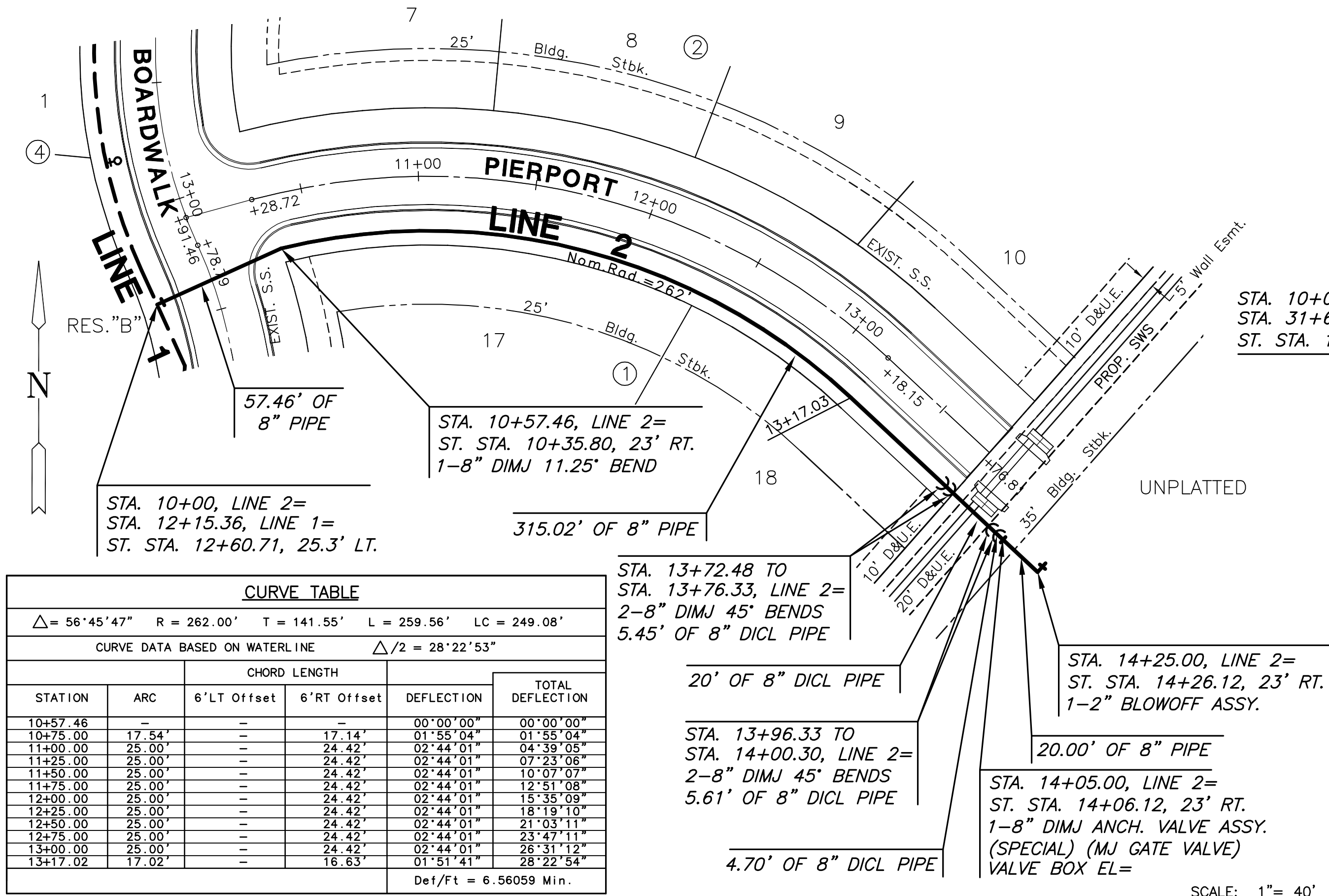


NOTE:
CONTRACTOR TO VERIFY
LOCATION AND ELEVATION OF
EXIST. 8" WATER LINE PRIOR
TO CONSTRUCTION.

PRIOR TO REMOVING SIDEWALK & DRIVE
CONTRACTOR SHALL COORDINATE WITH
OWNER ON WORK SCHEDULE. CONTRACTOR
SHALL KEEP HALF OF THE DRIVE OPEN AT
ALL TIMES USING TEMPORARY ROCK. COST
SUBSIDIARY TO PROJECT.

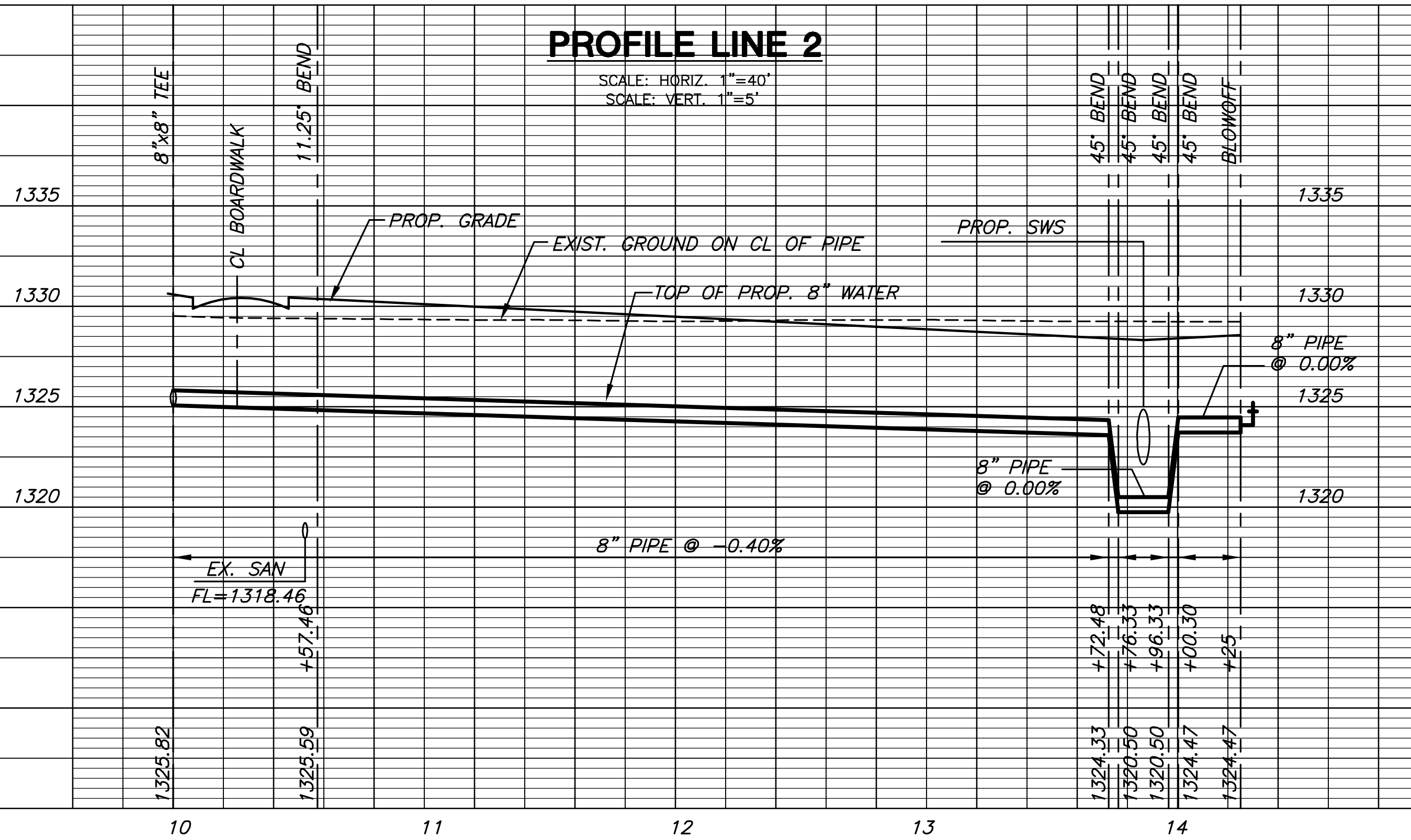
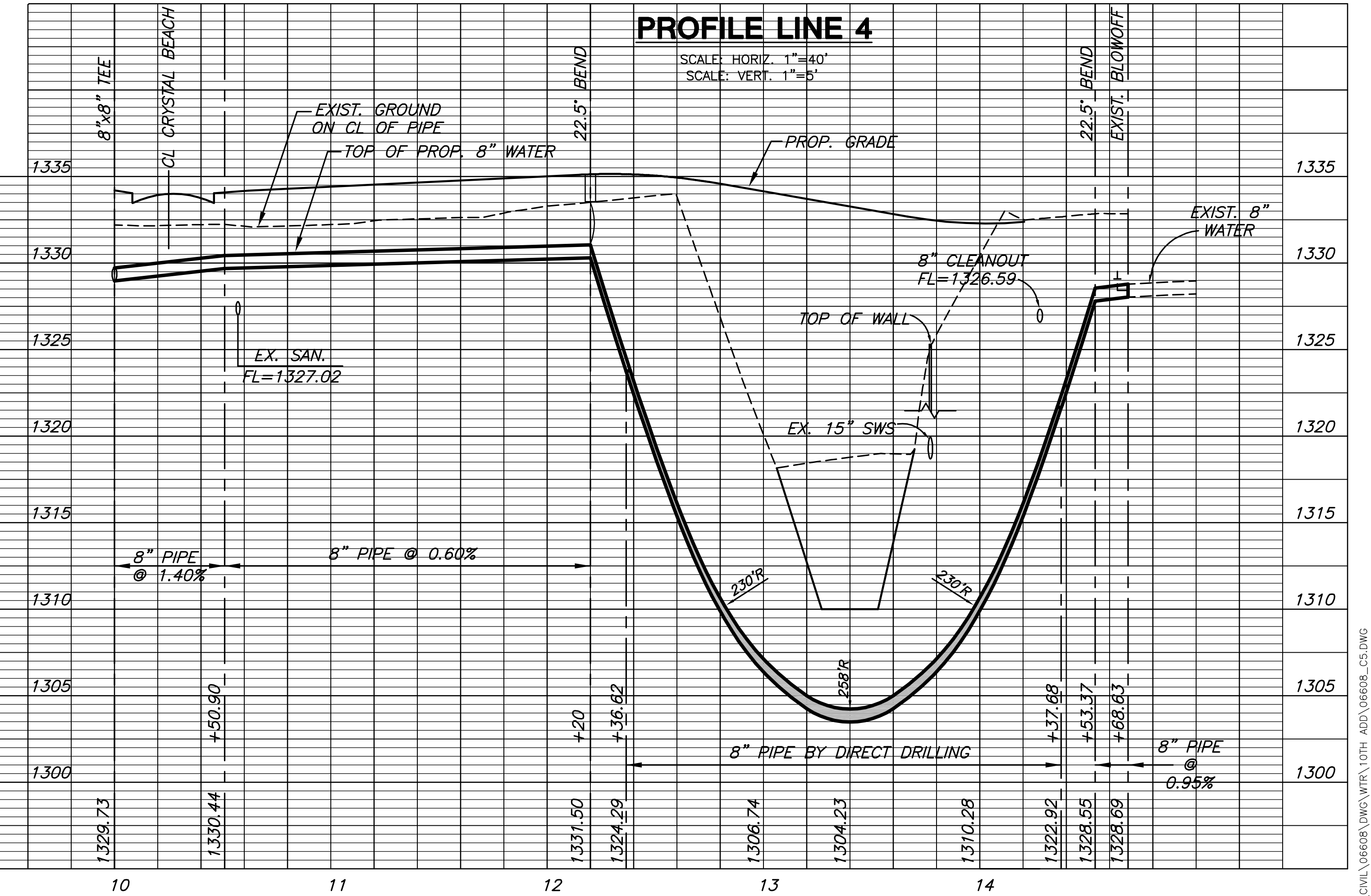
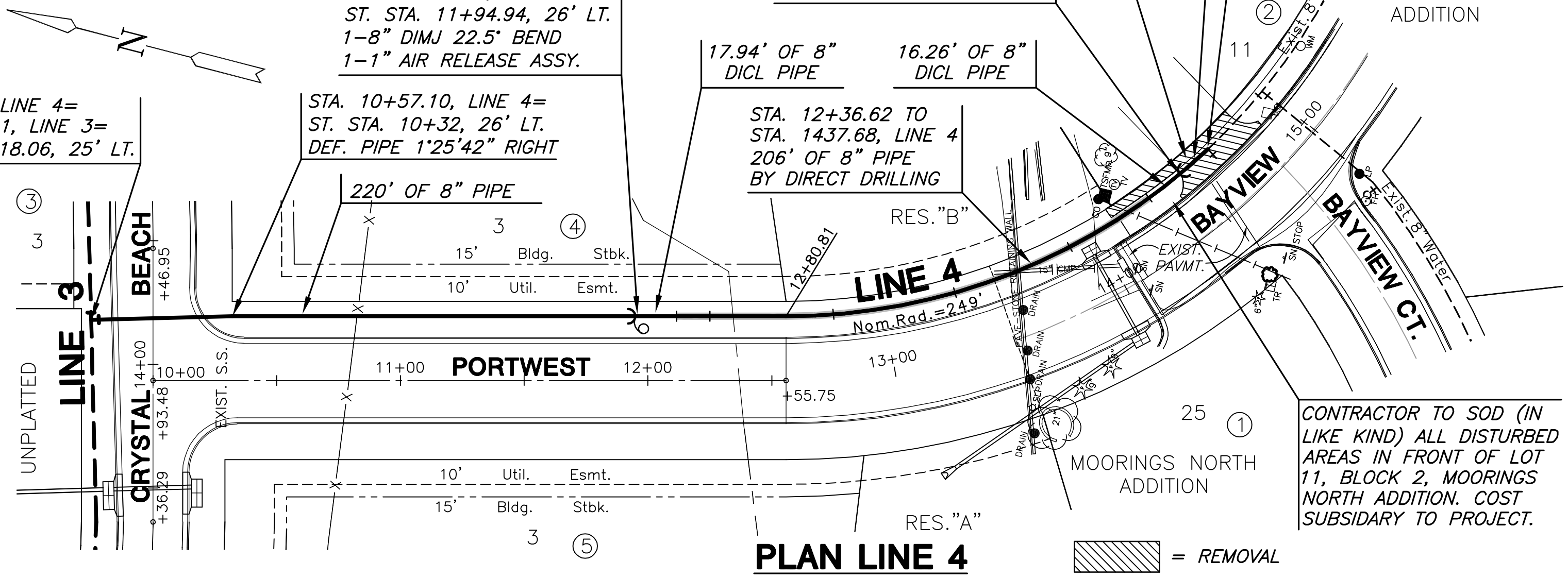
CURVE TABLE					
$\Delta = 43^{\circ}13'05''$ R = 249.00' T = 98.63' L = 187.82' LC = 183.40'					
CURVE DATA BASED ON WATERLINE $\Delta/2 = 21^{\circ}36'33''$					
STATION	ARC	CHORD LENGTH		DEFLECTION	TOTAL DEFLECTION
		6' LT Offset	6' RT Offset		
12+80.81	19.18'	18.72'	18.72'	00°00'00"	00°00'00"
13+00.00	25.00'	24.39'	24.39'	02°12'28"	02°12'28"
13+25.00	25.00'	24.39'	24.39'	07°52'35"	05°05'13"
13+50.00	25.00'	24.39'	24.39'	02°52'35"	07°57'38"
13+75.00	25.00'	24.39'	24.39'	02°52'35"	10°50'12"
14+00.00	25.00'	24.39'	24.39'	02°52'35"	13°42'47"
14+25.00	25.00'	24.39'	24.39'	02°52'35"	16°35'22"
14+50.00	25.00'	24.39'	24.39'	02°52'35"	19°27'56"
14+68.63	18.63'	18.18'	18.18'	02°08'36"	21°36'33"

Del/Ft = 6.90311 Min.



CURVE TABLE					
$\Delta = 56^{\circ}45'47''$ R = 262.00' T = 141.55' L = 259.56' LC = 249.08'					
CURVE DATA BASED ON WATERLINE $\Delta/2 = 28^{\circ}22'53''$					
STATION	ARC	CHORD LENGTH		DEFLECTION	TOTAL DEFLECTION
		6' LT Offset	6' RT Offset		
10+57.46	17.54'	17.14'	17.14'	00°00'00"	00°00'00"
10+75.00	25.00'	24.42'	24.42'	01°55'04"	01°55'04"
11+00.00	25.00'	24.42'	24.42'	02°44'01"	04°39'05"
11+25.00	25.00'	24.42'	24.42'	02°44'01"	07°23'06"
11+50.00	25.00'	24.42'	24.42'	02°44'01"	10°07'07"
11+75.00	25.00'	24.42'	24.42'	02°44'01"	12°51'08"
12+00.00	25.00'	24.42'	24.42'	02°44'01"	15°35'09"
12+25.00	25.00'	24.42'	24.42'	02°44'01"	18°19'10"
12+50.00	25.00'	24.42'	24.42'	02°44'01"	21°03'11"
12+75.00	25.00'	24.42'	24.42'	02°44'01"	23°47'11"
13+00.00	25.00'	24.42'	24.42'	02°44'01"	26°31'12"
13+17.02	17.02'	16.63'	16.63'	01°51'41"	28°22'54"

Del/Ft = 6.56059 Min.



PLOT: 05/08/08 09:50AM

J:\CIVIL\06608\WATER\10TH_ADD\06608_CS.DWG