

**MT VERNON STREET AND
DRAINAGE IMPROVEMENTS
FROM GREENWAY TO BROADWAY**

**Storm Sewer
Lines 31, 32,
33, & 34**
SHEET TITLE 472-84289
448-90385
468-84514
PROJECT NUMBER

DESIGN BY JRA
DRAWN BY JSB
CHECKED BY JRA

ISSUED
May 27, 2008
REVISED

SHEET NO.
40 of 120

Sta. 10+51.02, 11.33' Lt., Line 31=
@ Sta. 46+77.29, 67.82' Lt.
Const. Std. Type 1 Curb Inlet
L=11'-4", W=5'-4"
Inlet Top=100.99

Sta. 10+51.02, Line 31=
@ Sta. 46+77.08, 56.49' Lt.
Const. Std. Type 1 Curb Inlet
L=11'-4", W=5'-4"
Inlet Top=100.98
Install 30" RCP-S

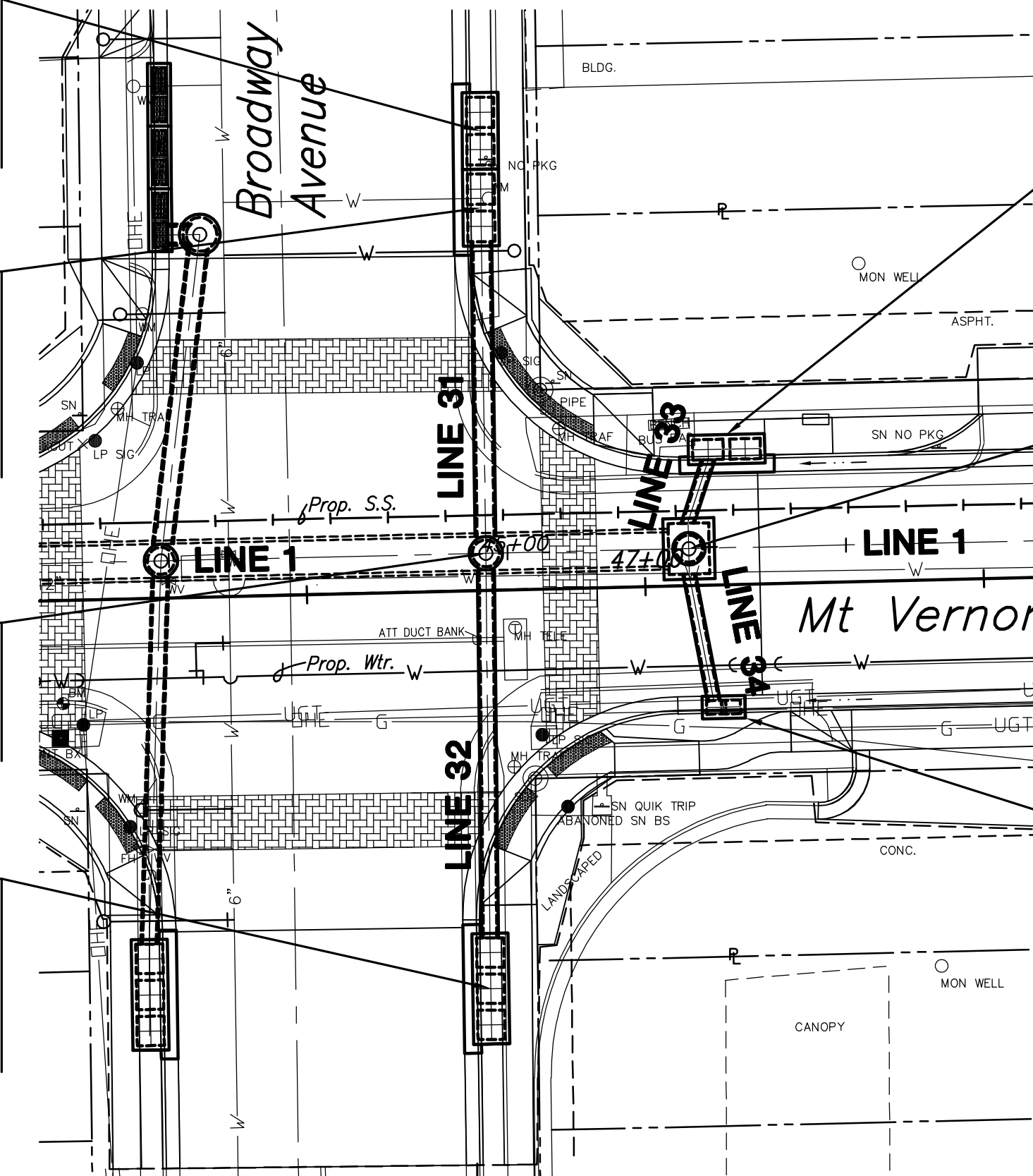
Sta. 10+00.00, Line 31=
Sta. 10+00.00, Line 32=
Sta. 44+96.79, Line 1
@ Sta. 46+6.56, 5.47' Lt.

Sta. 10+64.28, Line 32=
@ Sta. 46+75.78, 58.80' Rt.
Const. Std. Type 1 Curb Inlet
L=16'-4", W=5'-4"
Inlet Top=100.88
Install 24" RCP-N

Sta. 10+15.08, Line 33=
@ Sta. 47+12.47, 20.00' Lt.
Const. Std. Type 1 Curb Inlet
L=11'-4", W=4'-4"
Inlet Top=101.01
Install 18" RCP-S

Sta. 10+00.00, Line 33=
Sta. 10+00.00, Line 34=
Sta. 45+26.79, Line 1
@ Sta. 47+06.56, 5.45' Lt.

Sta. 10+23.78, Line 34=
@ Sta. 47+11.13, 18.06' Rt.
Const. Std. Type II Curb Inlet
L=6'-2 1/2", W=3'-4 1/8"
Inlet Top=101.01
Install 18" RCP-N



PLAN-LINE 31, 32, 33, & 34
SCALE: 1"=20'

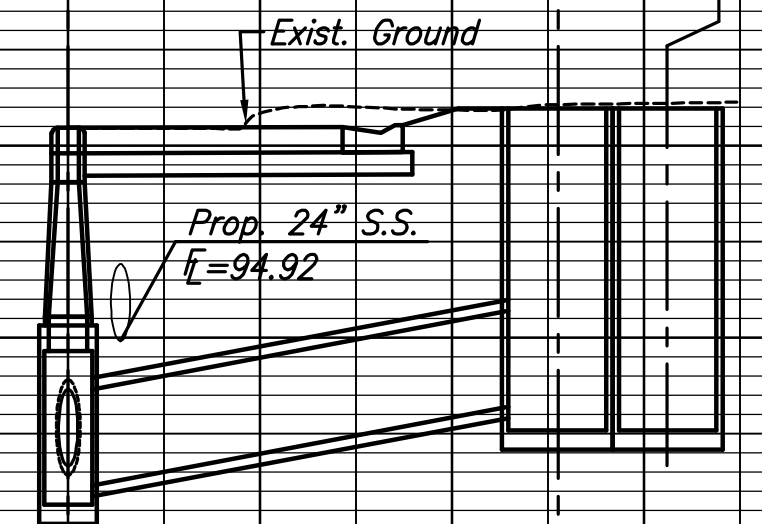
PROFILE-LINE 31

SCALE: HORIZ. 1"=20'
SCALE: VERT. 1"=5'

Sta. 10+00.00, Line 31=
Sta. 44+96.79, Line 1
MH Top=100.47

Sta. 10+51.02, Line 31=
Const. Std. Type 1 Inlet
Inlet Top=100.98

Sta. 10+51.02, 11.33' Lt., Line 31=
Const. Std. Type 1 Curb Inlet
Inlet Top=100.99



51.02 L.F. 30" RCP
@ +4.00%

E=90.66 (5'x4' RCB)
I In=91.16 (30" RCP-N)
I In=91.66 (24" RCP-S)
E Out=93.20 (30" RCP-S)

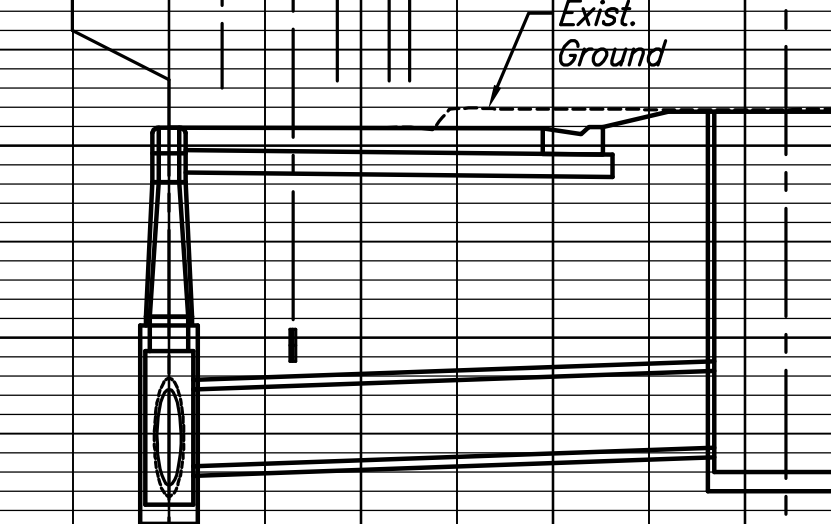
10+00

PROFILE-LINE 32

SCALE: HORIZ. 1"=20'
SCALE: VERT. 1"=5'

Sta. 10+00.00, Line 32=
Sta. 44+96.79, Line 1
MH Top=100.47

Sta. 10+64.28, Line 32=
Const. Std. Type 1 Inlet
Inlet Top=100.88



64.28 L.F. 24" RCP
@ +0.75%

E=90.66 (5'x4' RCB)
I In=91.66 (24" RCP-S)
I In=91.16 (30" RCP-N)
E Out=92.14 (30" RCP-N)

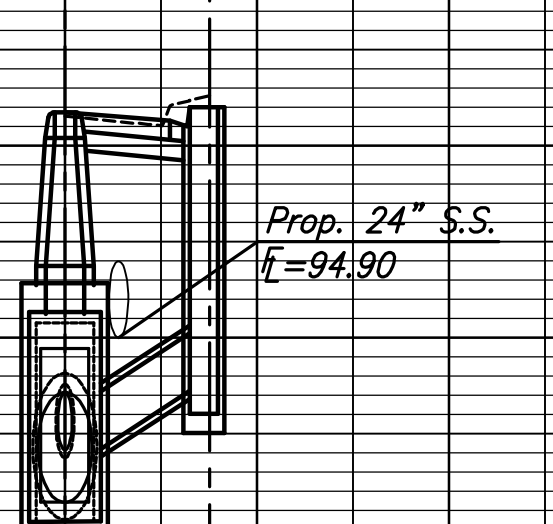
10+00

PROFILE-LINE 33

SCALE: HORIZ. 1"=20'
SCALE: VERT. 1"=5'

Sta. 10+00.00, Line 33=
Sta. 45+26.79, Line 1
MH Top=100.87

Sta. 10+15.08, Line 33=
Const. Std. Type 1 Inlet
Inlet Top=101.01



15.08 L.F. 18" RCP
@ +10.00%

E Out=90.72 (5'x4' RCB-W)
I In=92.11 (18" RCP-N)
I In=92.11 (18" RCP-S)
I In=90.72 (68'x43" RCPHE-E)
E Out=93.92 (18" RCP-S)

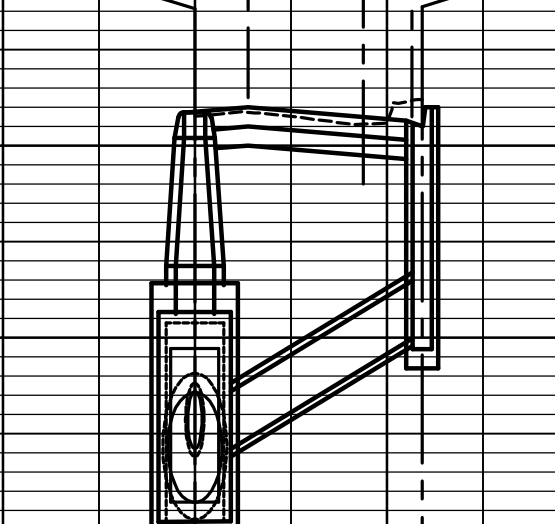
10+00

PROFILE-LINE 34

SCALE: HORIZ. 1"=20'
SCALE: VERT. 1"=5'

Sta. 10+00.00, Line 34=
Sta. 45+26.79, Line 1
MH Top=100.87

Sta. 10+23.78, Line 34=
Const. Std. Type II Inlet
Inlet Top=101.00



23.78 L.F. 18" RCP
@ +12.00%

E Out=90.72 (5'x4' RCB-W)
I In=92.11 (18" RCP-S)
I In=92.11 (18" RCP-N)
I In=90.72 (68'x43" RCPHE-E)
E Out=94.96 (18" RCP-N)

10+00