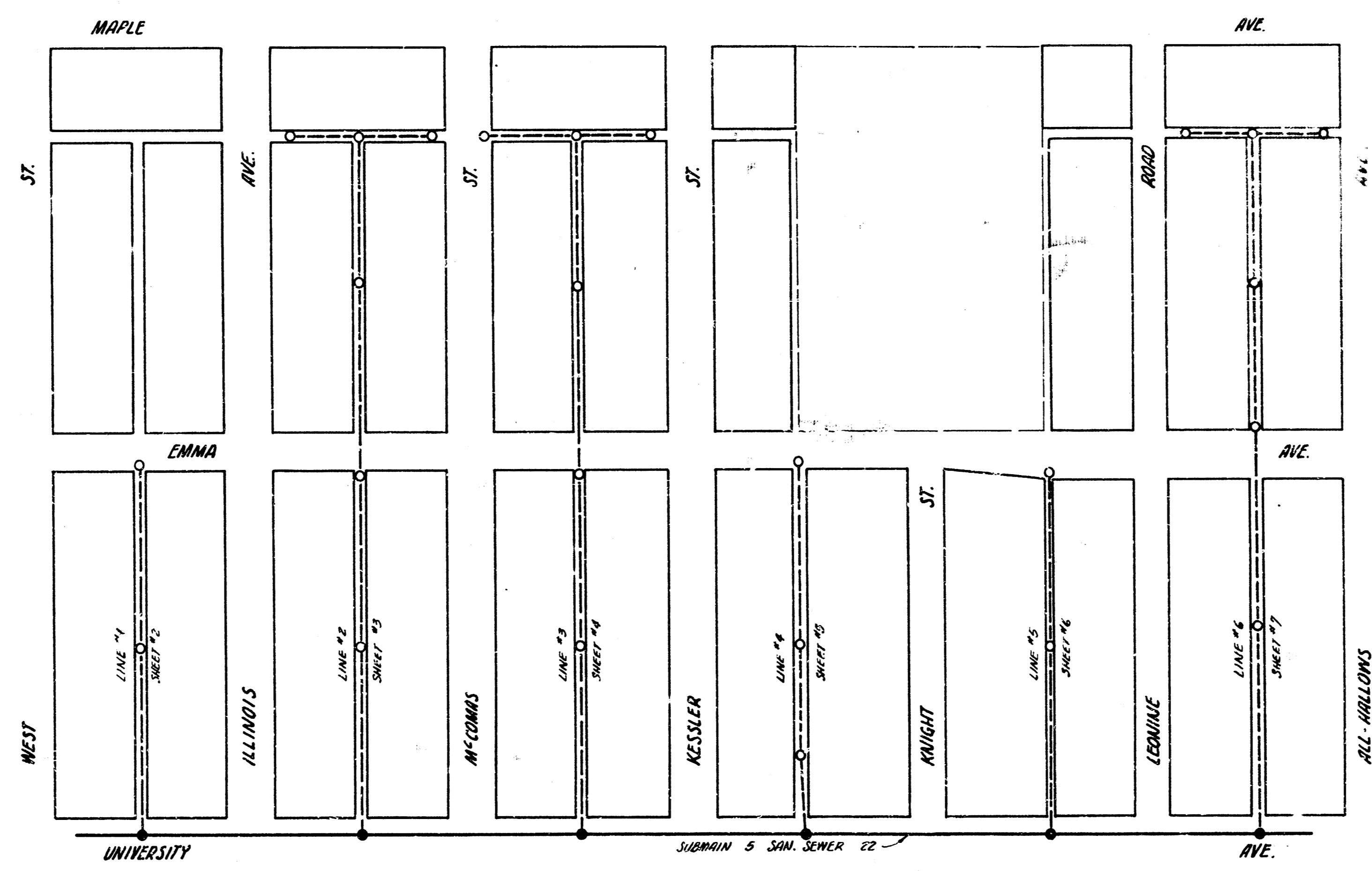


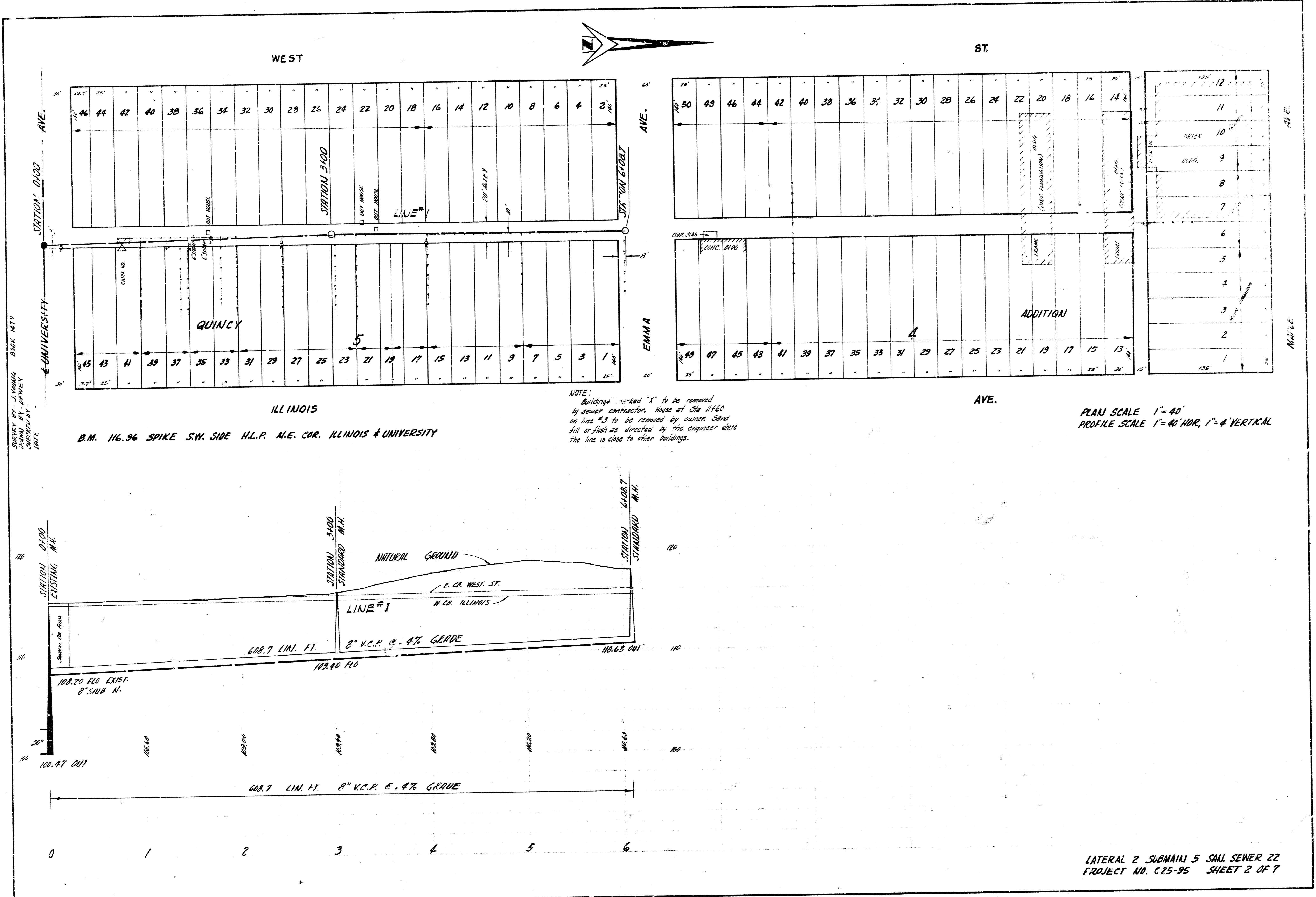
LOCATION MAP
 LAT. 2 SUB. 5 SAN. SEWER 22
 CITY OF WICHITA
 B.E. SMITH CITY ENGINEER PROJECT NO. C 25-95



CHECKED BY: J. WONG
 DATE: 11/11/95
 DRAWN BY: B. WELCH
 CHECKED BY: [blank]
 DATE: [blank]



LATERAL 2 SUBMAIN 5 SAN. SEWER 22
 PROJECT NO. C25-95 SHEET 1 OF 7



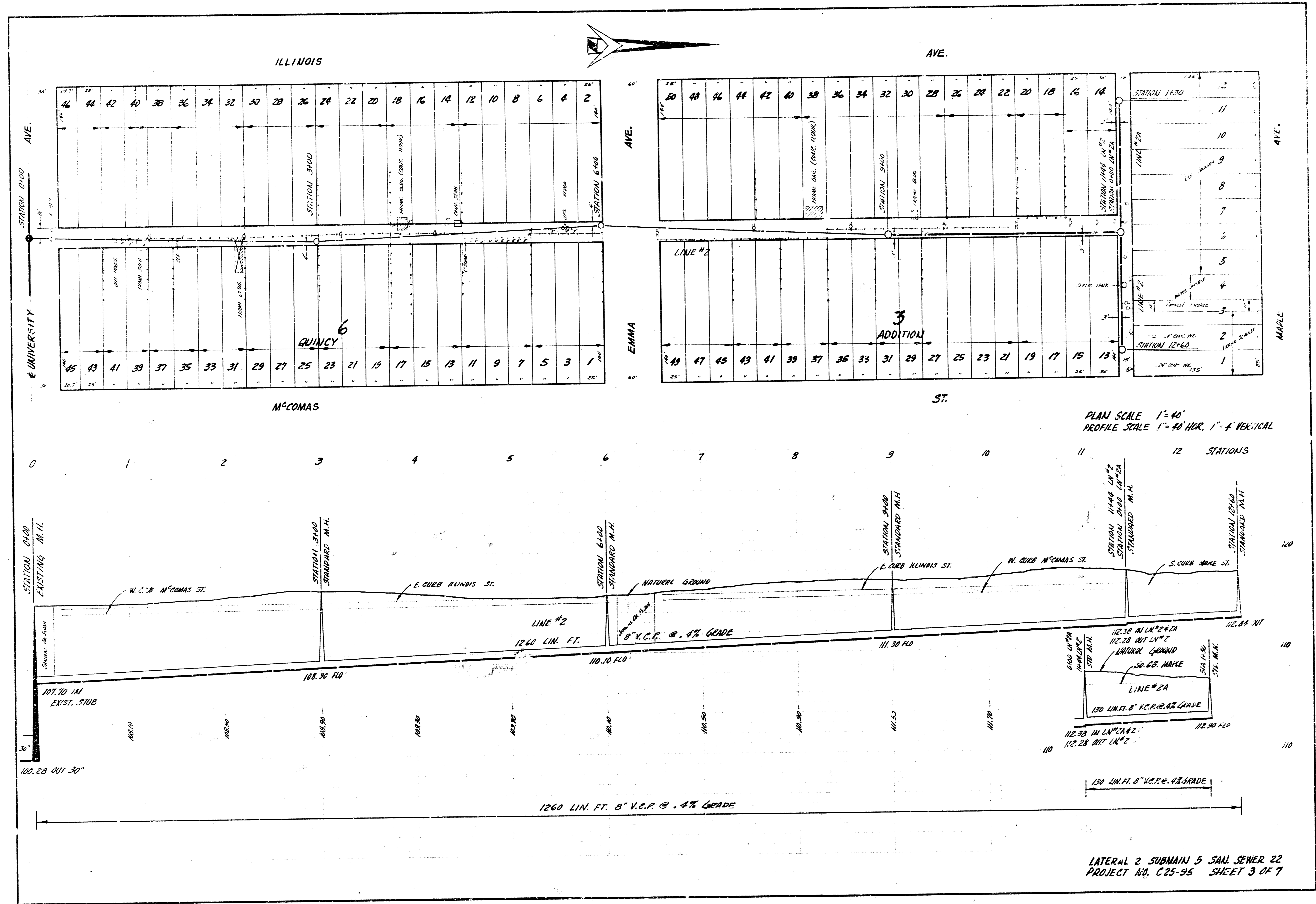
SURVEY BY J. HANCOCK BROS. INC.
 DRAWN BY J. HANCOCK BROS. INC.
 CHECKED BY J. HANCOCK BROS. INC.

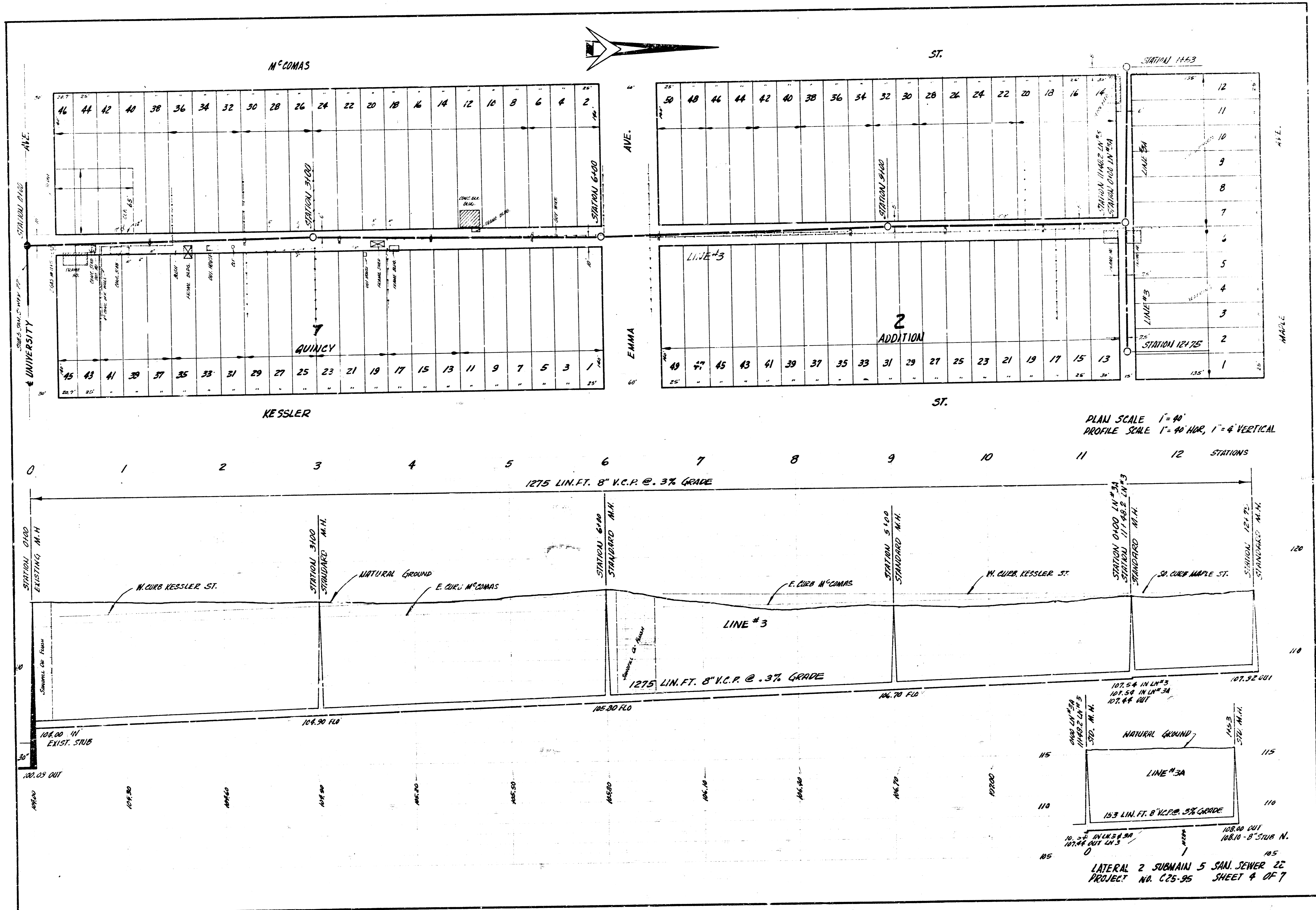
B.M. 116.96 SPIKE S.W. SIDE H.L.P. N.E. COR. ILLINOIS & UNIVERSITY

NOTE:
 Buildings marked "X" to be removed
 by sewer contractor. House at Sta 11+60
 on line #3 to be removed by owner. Sand
 fill or just as directed by the engineer where
 the line is close to other buildings.

PLAN SCALE 1" = 40'
 PROFILE SCALE 1" = 40' HOR, 1" = 4' VERTICAL

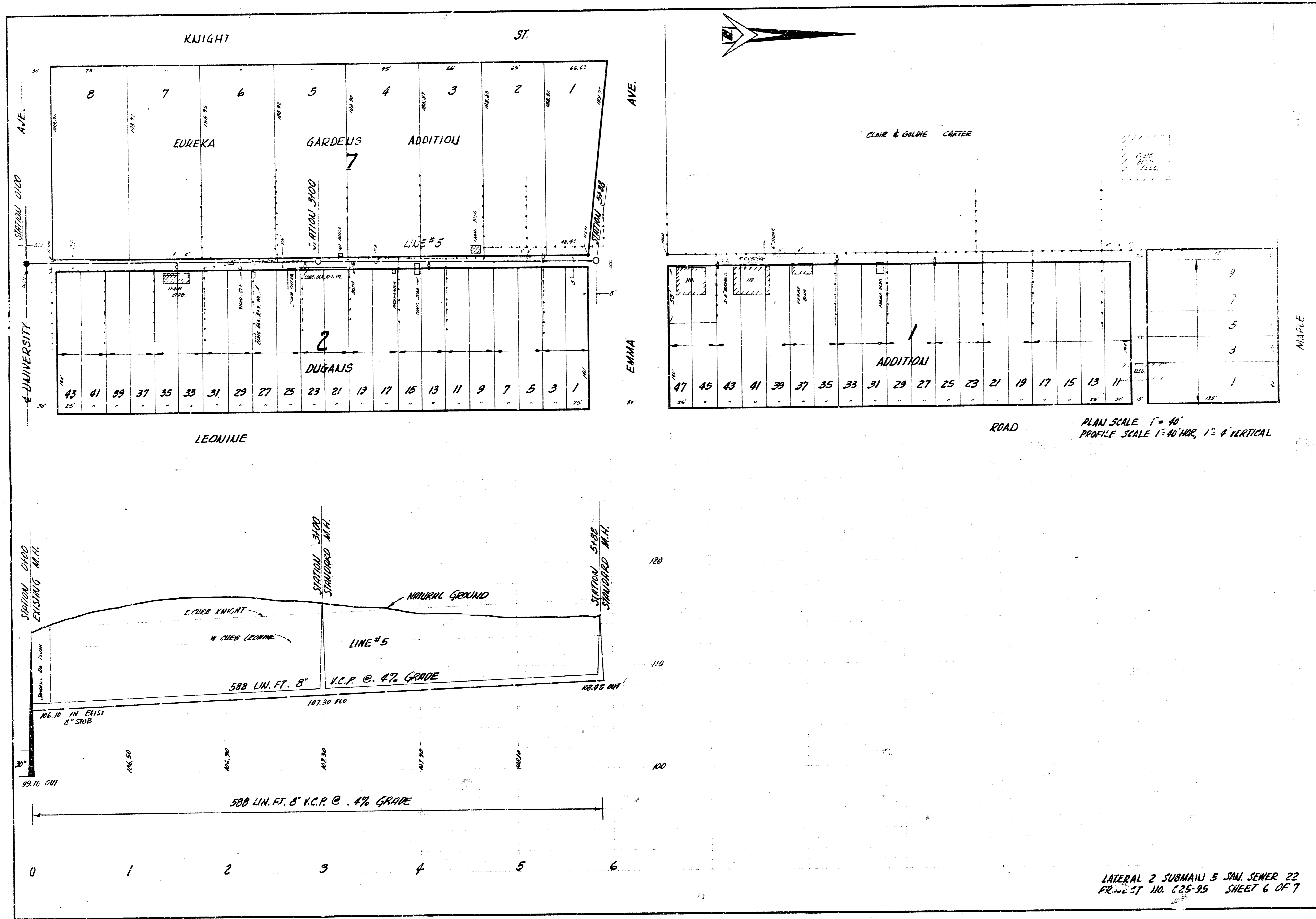
LATERAL 2 SUBMAIN 5 SAN SEWER 22
 PROJECT NO. C25-95 SHEET 2 OF 7

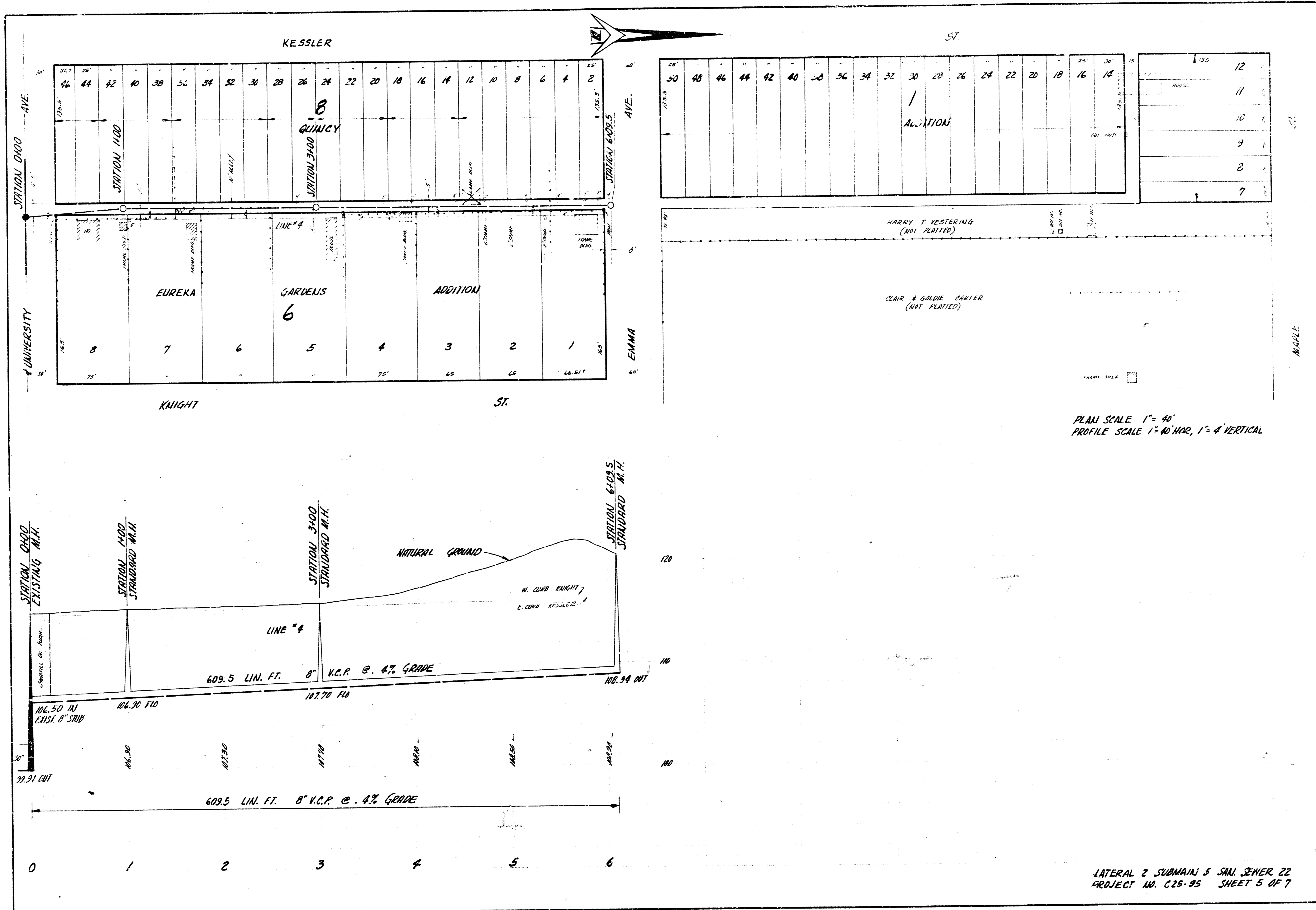




PLAN SCALE 1"=40'
 PROFILE SCALE 1"=40' HOR, 1"=4' VERTICAL

LATERAL 2 SUBMAIN 5 SAN. SEWER 22
 PROJECT NO. C25-95 SHEET 4 OF 7





PLAN SCALE 1" = 40'
 PROFILE SCALE 1" = 40' HOR, 1" = 4' VERTICAL

LATERAL 2 SUBMAIN 5 SAN SEWER 22
 PROJECT NO. C25-95 SHEET 5 OF 7

