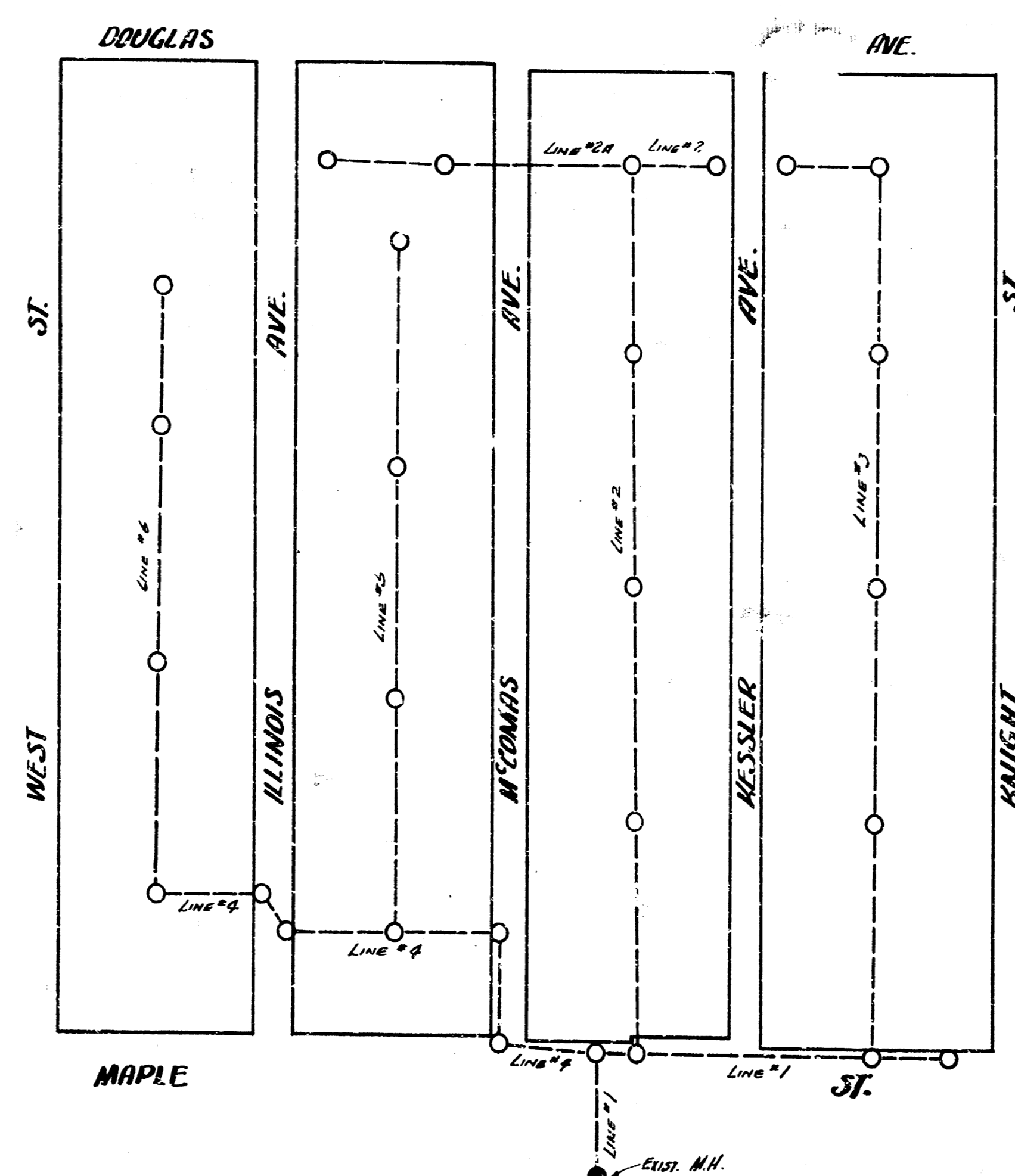
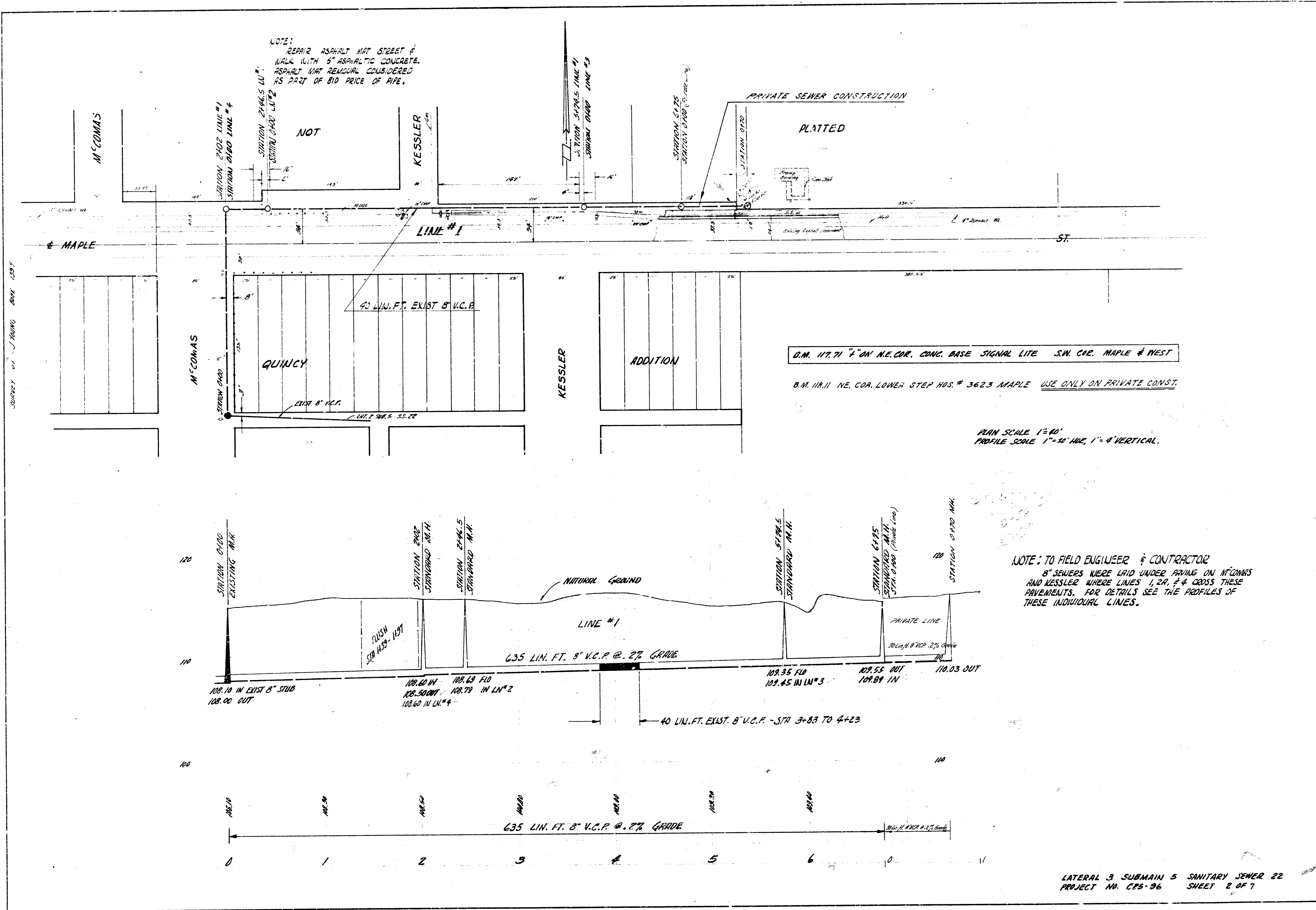


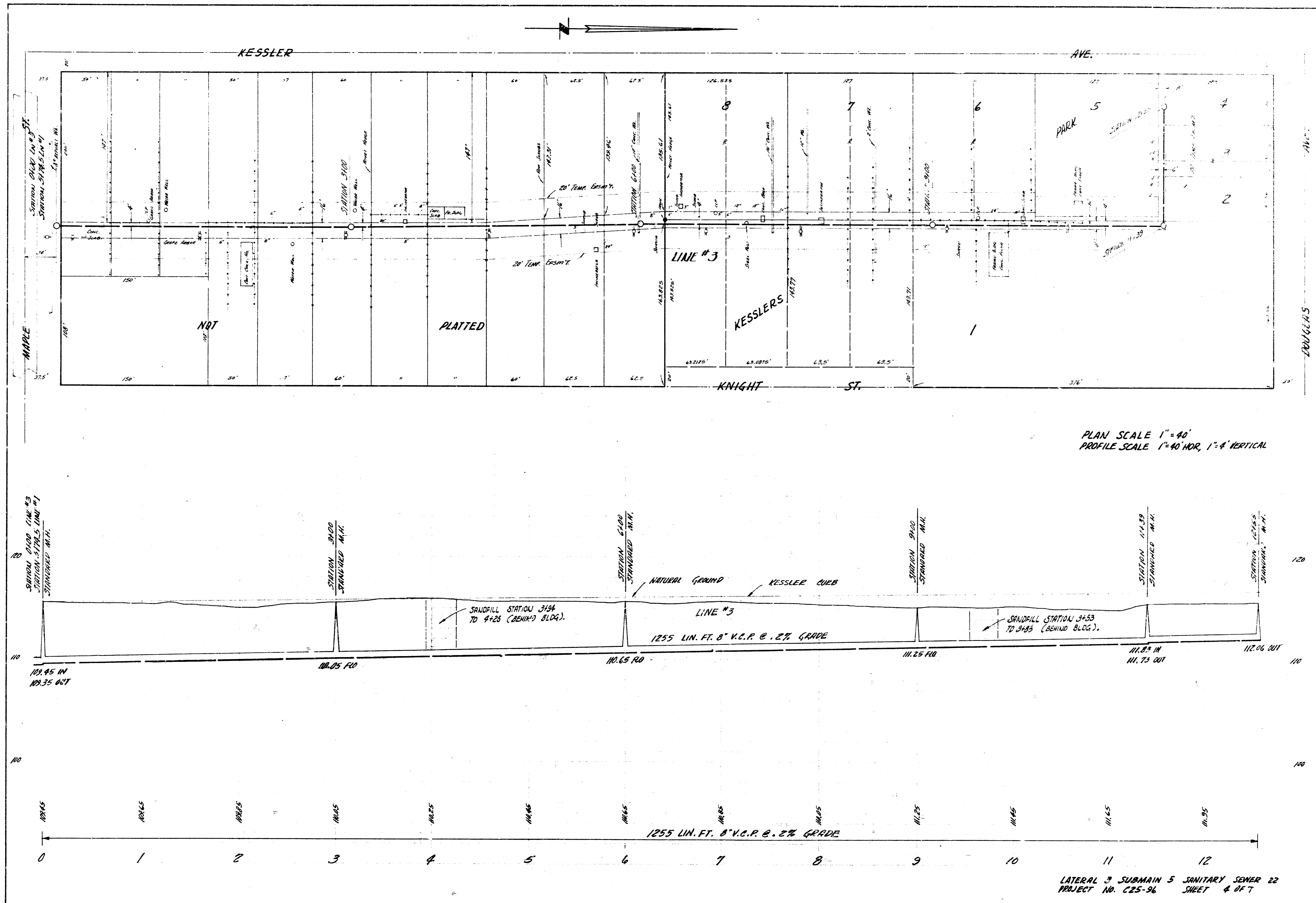
LOCATION MAP
LAT.3 SUB.5 SAN. SEWER 22
CITY OF WICHITA
 B.E. SMITH CITY ENGINEER PROJECT NO. C 25-96

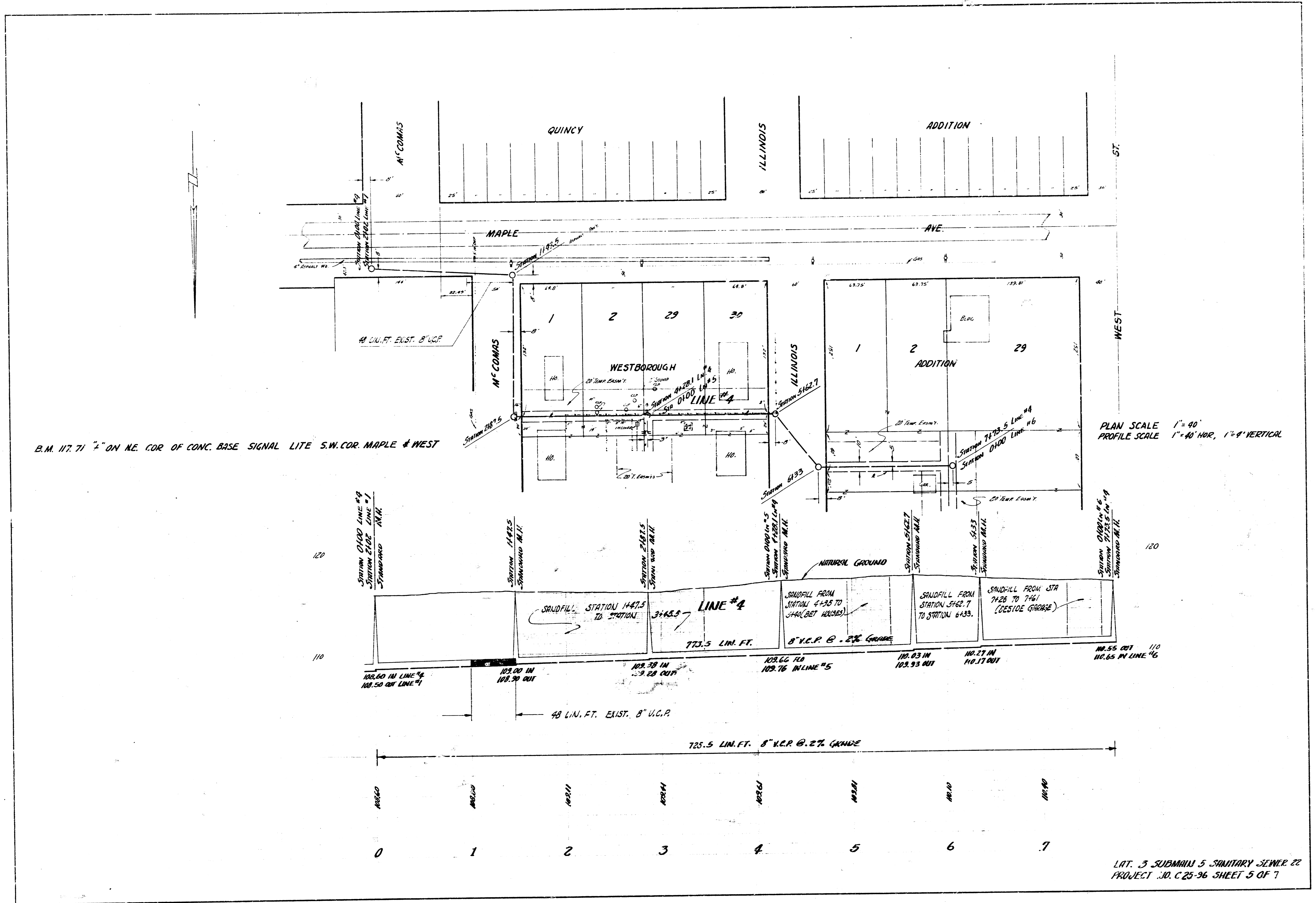


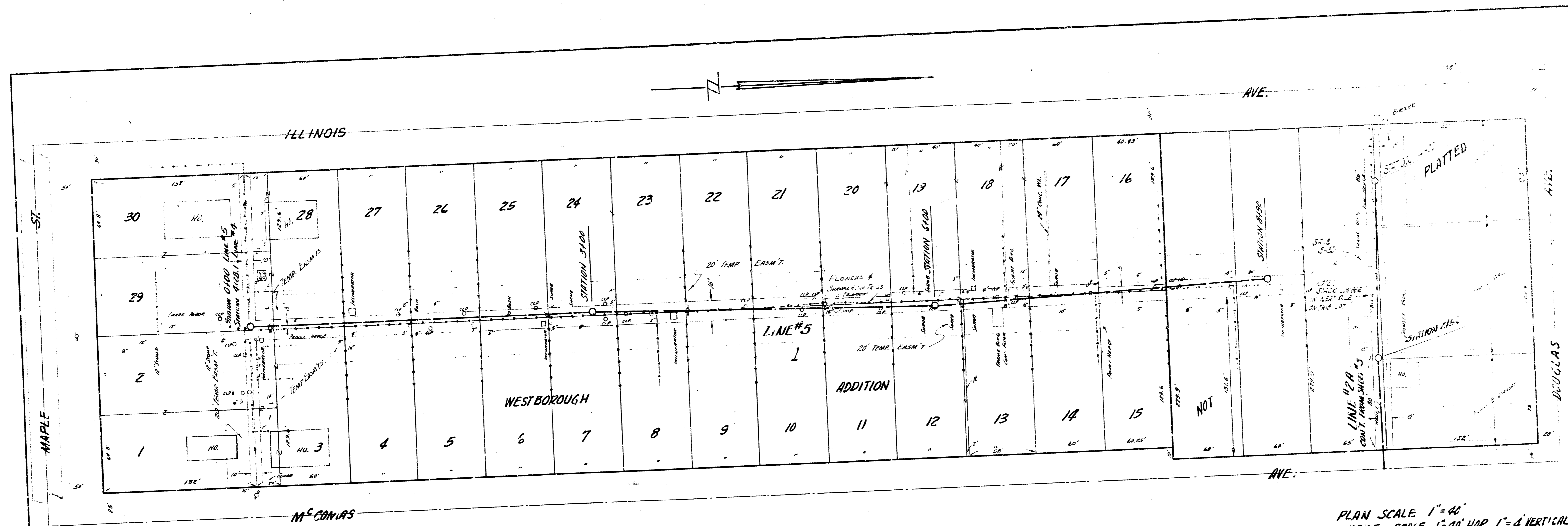
SURVEY BY: J. KING 8/64 1991
 DRAWN BY: JANEY
 CHECKED BY: J. KING
 DATE: 8/64

LATERAL 3 SUBMAIN 5 SAN. SEWER 22
 PROJECT NO. C-25-96 SHEET 1 OF 7

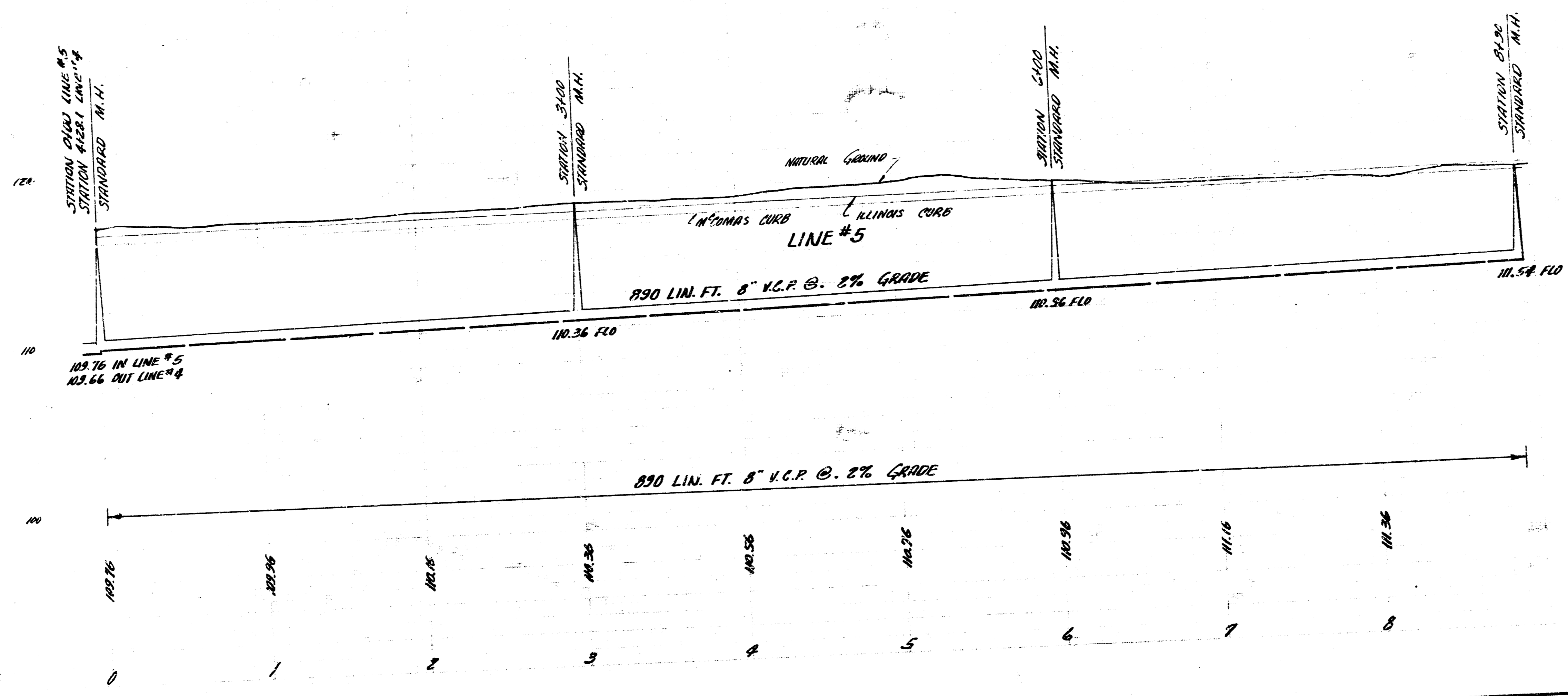








PLAN SCALE 1"=40'
 PROFILE SCALE 1"=40' HOR, 1"=4' VERTICAL



NOTE:
 A 40' PORTION OF LINE #2A FROM STA. 1143 TO 1153 IS EXISTING. THIS PORTION IS UNDER McCOMAS PAVT

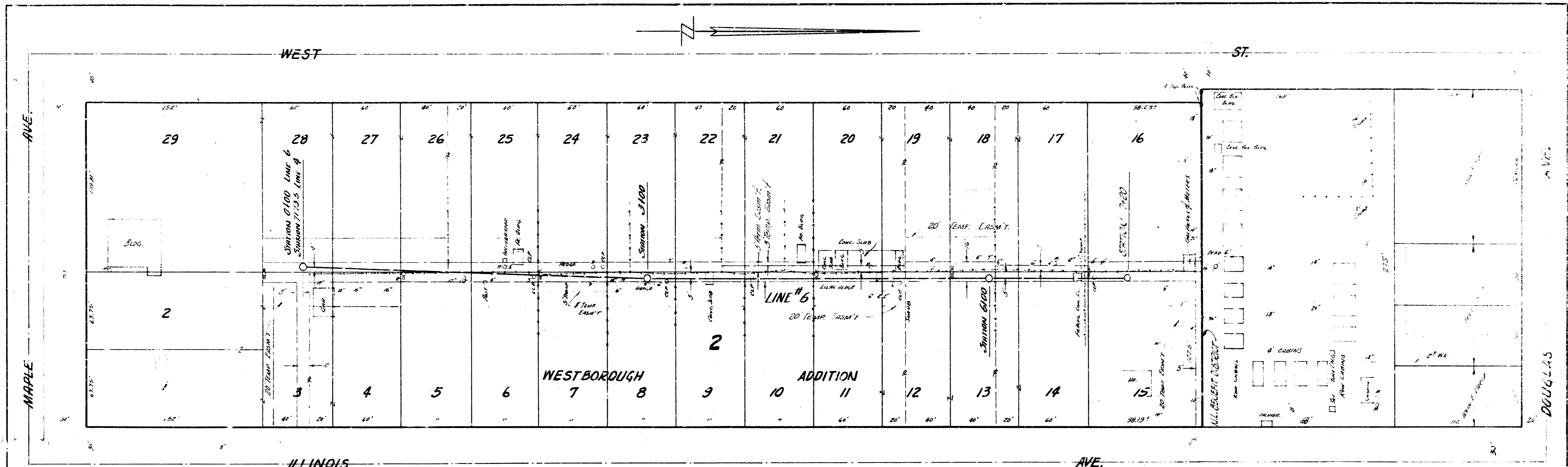
NOTE:
 FLUSH LINE #2A FROM STATION 0+00 TO 1+40 ALSO FROM STA. 2+25 TO 3+55. MINIMUM GRADE

LINE #2A
 400 LIN. FT. 8" V.C.P. @ 2% GRADE

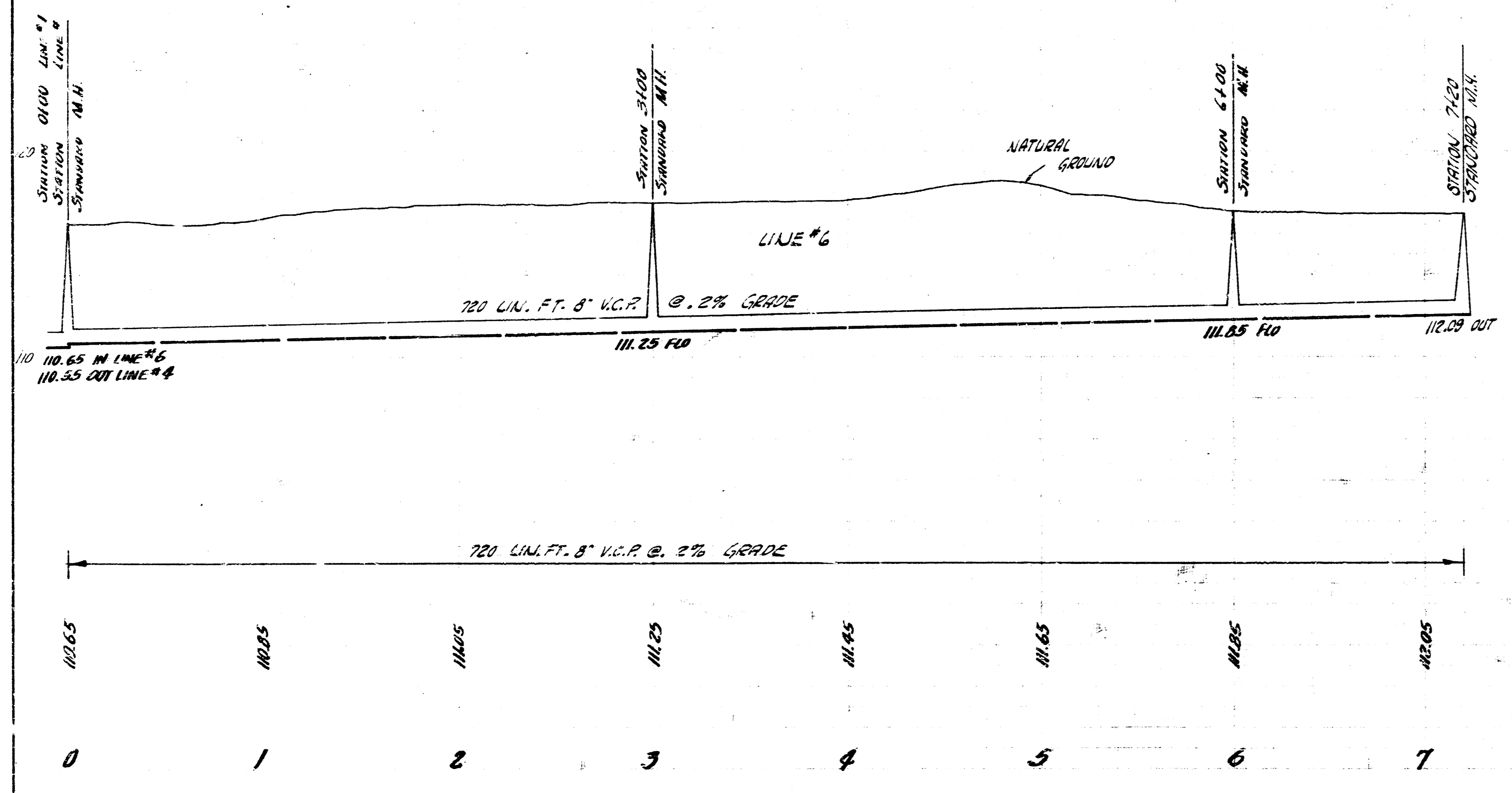
111.15 IN LINE #2A
 110.85 OUT LINE #2

400 LIN. FT. 8" V.C.P. @ 2% GRADE

LAT. 3 SUBMAIN 5 SANITARY SEWER 22
 PROJECT NO. C25 96 SHEET 6 OF 7



PLAN SCALE 1"=40'
 PROFILE SCALE 1"=40' HOR, 1"=4' VERTICAL



LAT. 3 SUB. 5 SANITARY SEWER 22
 PROJECT NO. C25-96 SHEET 7 OF 7