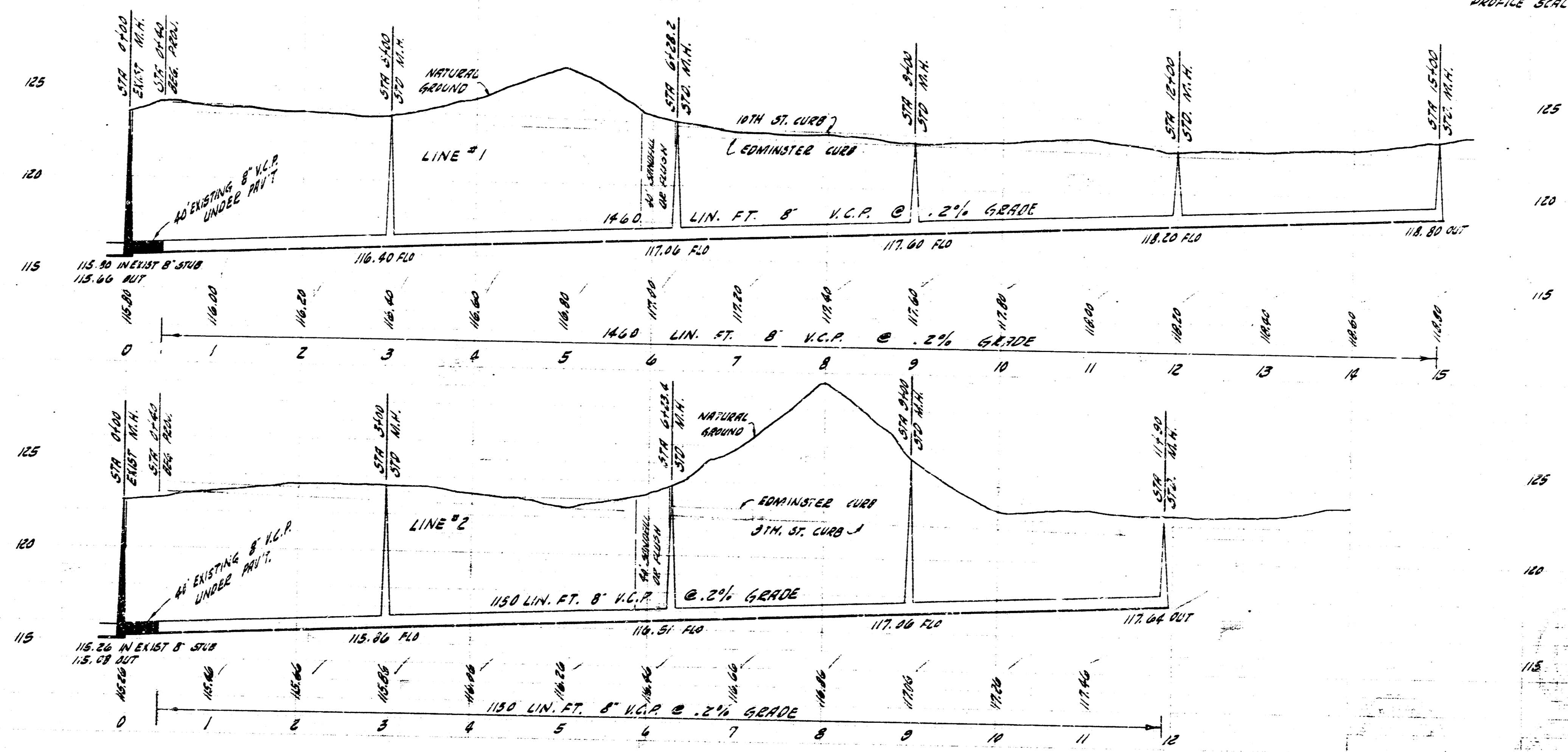


B.M. 124.04 DOUBLE SPIRE W/ KITE POLE 43 3/4' S 21 1/2' E OF NEVADA.  
 B.M. 123.55 6" IN GLOBE S. CO. EDWINSTEEZ, 3' N. OF EL. COUGHREY.

PLAN SCALE 1"=80'  
 PROFILE SCALE 1"=80' HOR, 1"=4' VERT.



AT. 80 SUB. 5 SAN. SEWER 22  
 CITY OF WICHITA, KANSAS  
 B.E. SMITH CITY ENGINEER  
 PROJ. NO. 628-98 DATE- DEC. 1928