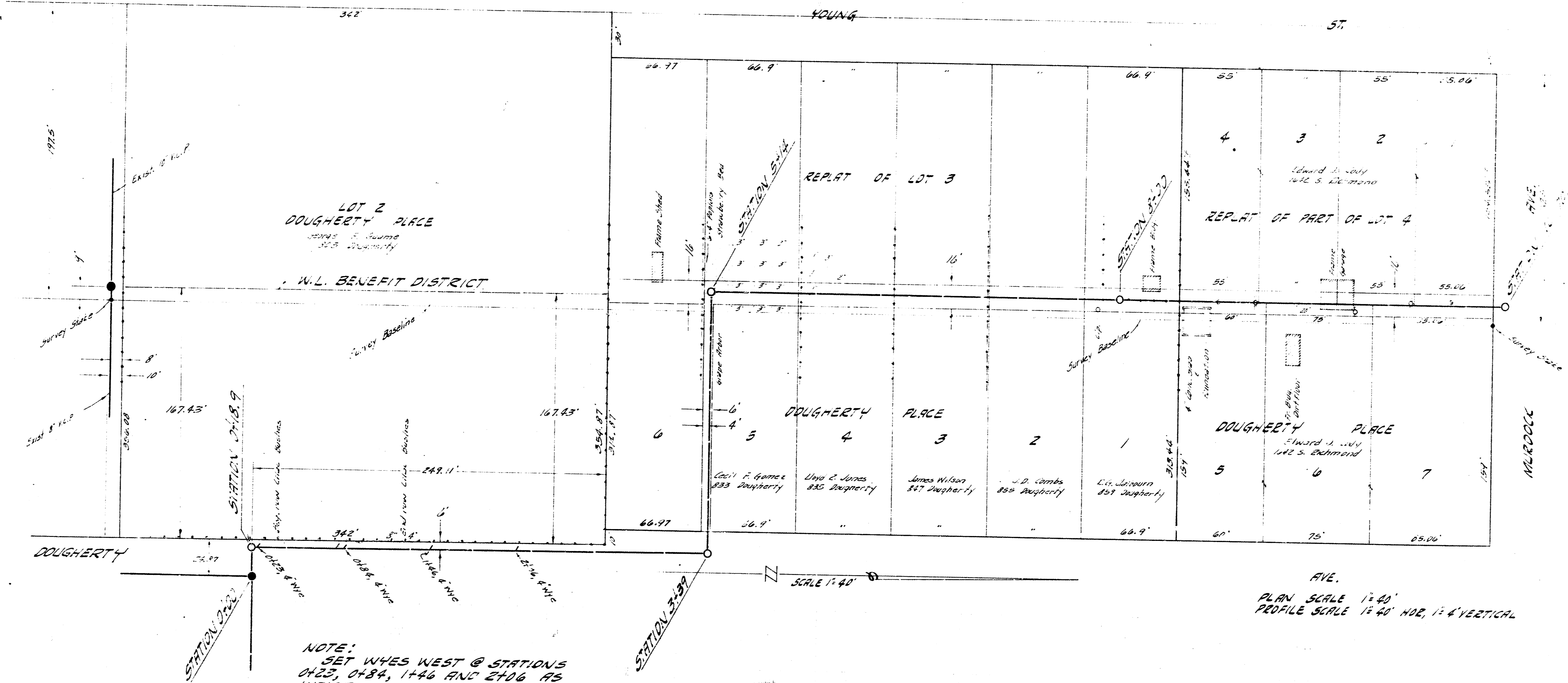
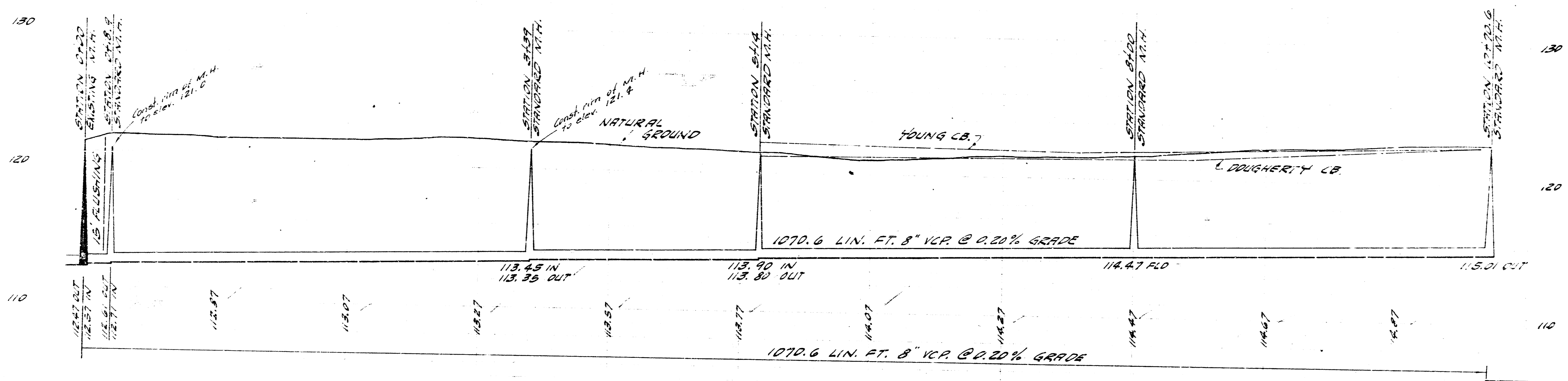


5.11.22.04.511 FOR CONC. STEP NO. 800 N. BREESE  
 3.11.23.165.55 FOR CONC. POLEH. NO. 4222 W. ELMA (NE ELMA & NE. 100)



NOTE:  
 SET WHYS WEST @ STATIONS  
 0+22, 0+84, 1+46 AND 2+06 AS  
 INDICATED ON PLAN.

FILE  
 PLAN SCALE 1"=40'  
 PROFILE SCALE 1"=40' HOR, 1"=4' VERTICAL



LATERAL 112 SUBMAIN 3 SAN. SEWER 22  
 CITY OF WICHITA, KANSAS  
 B.E. SMITH CITY ENGINEER  
 PROJ. NO. C29-42 DATE