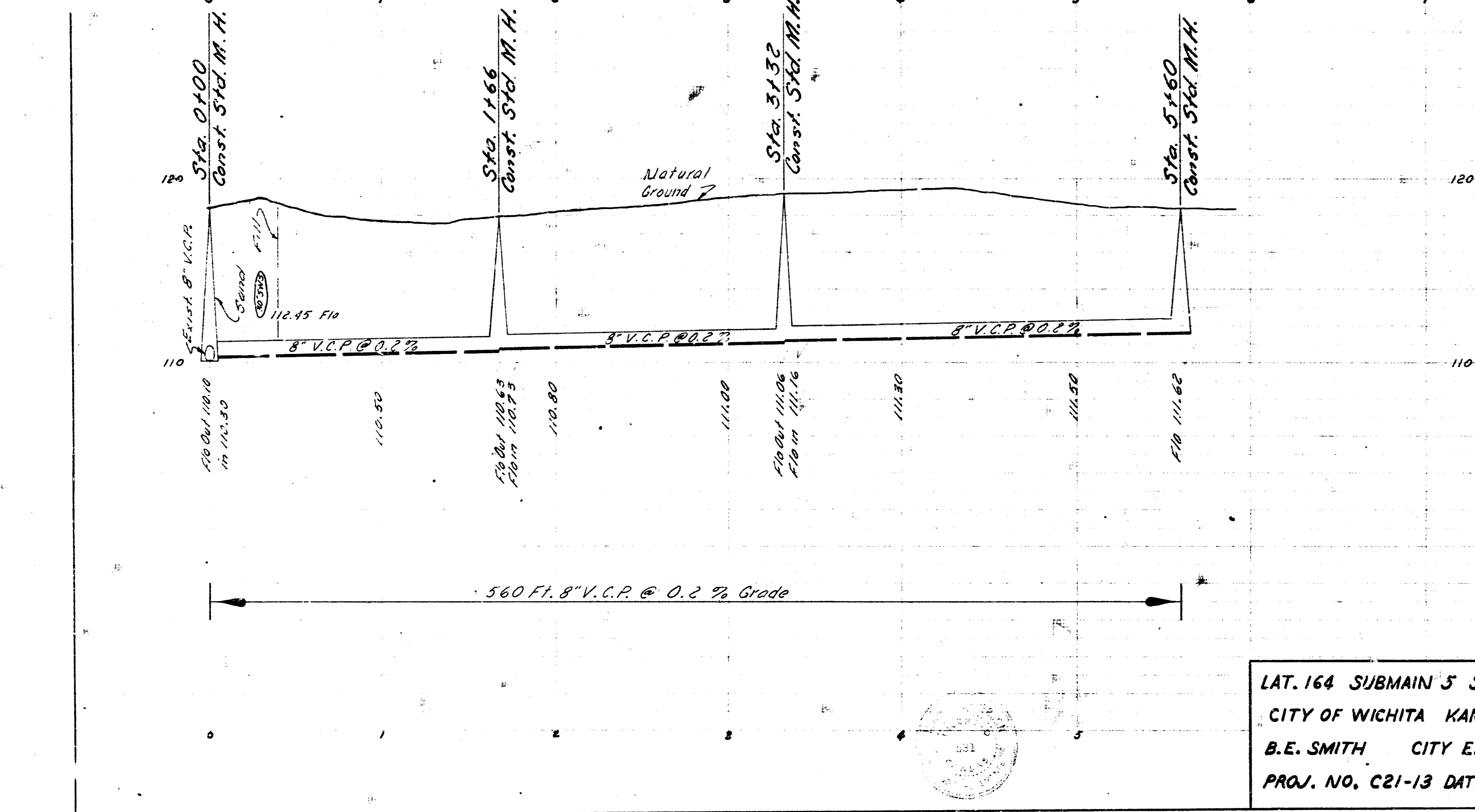


NOTE: Replace All Fences

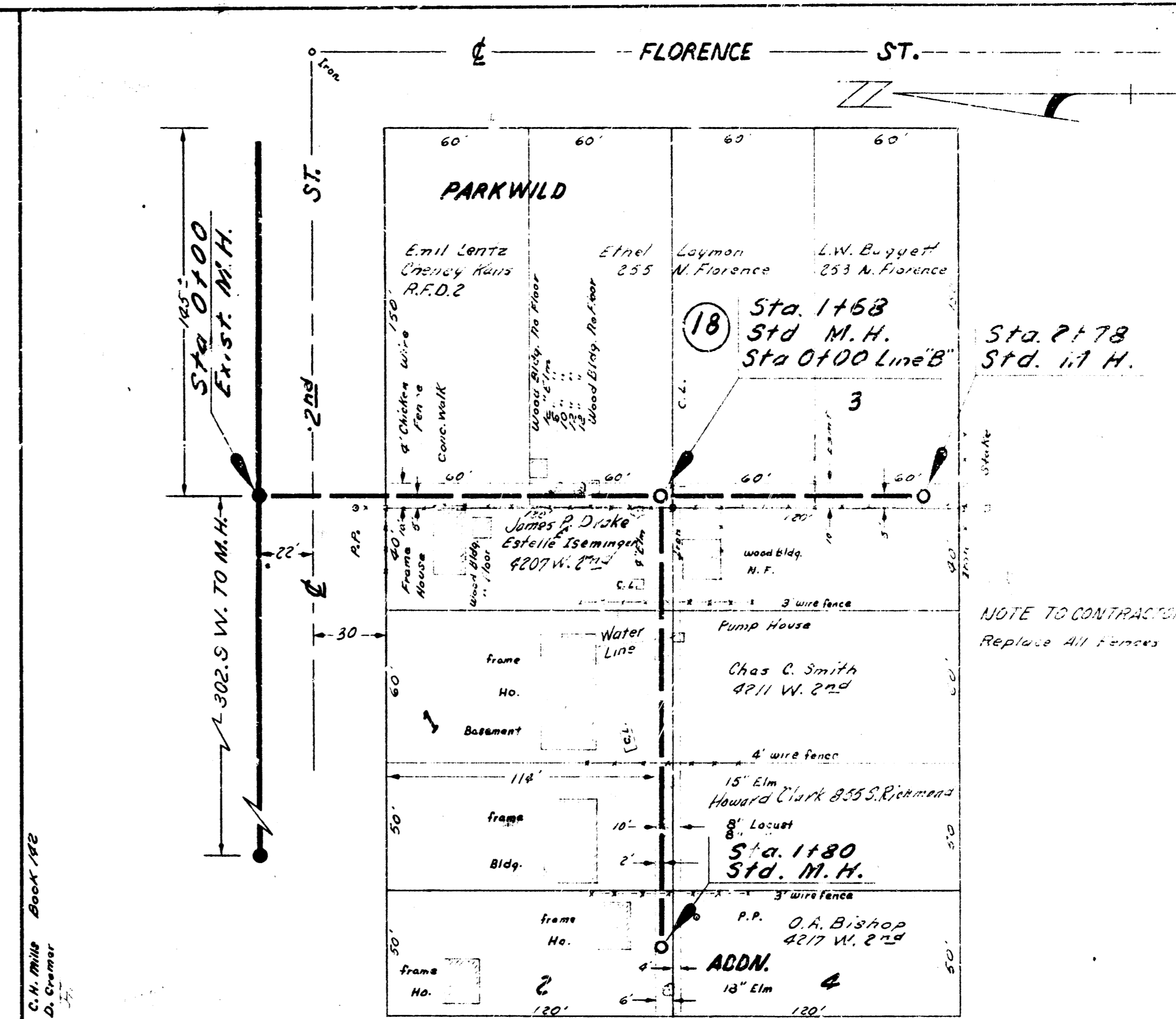
SURVEY BASELINE = 180' E. OF  $\frac{1}{2}$  TRACY ST.  
 B.M. 118.57 N. RIM M.H. 135' E. OF E.L. YOUNG ST. & 22' N. OF  $\frac{1}{2}$  2<sup>ND</sup> ST.

NOTE: STANDARD ON N.E. COR. 2<sup>ND</sup> & WEST ST. DESTROYED

PLAN SCALE 1" = 40'  
 PROFILE SCALE 1" = 40' HOR. 1" = 4' VERTICAL



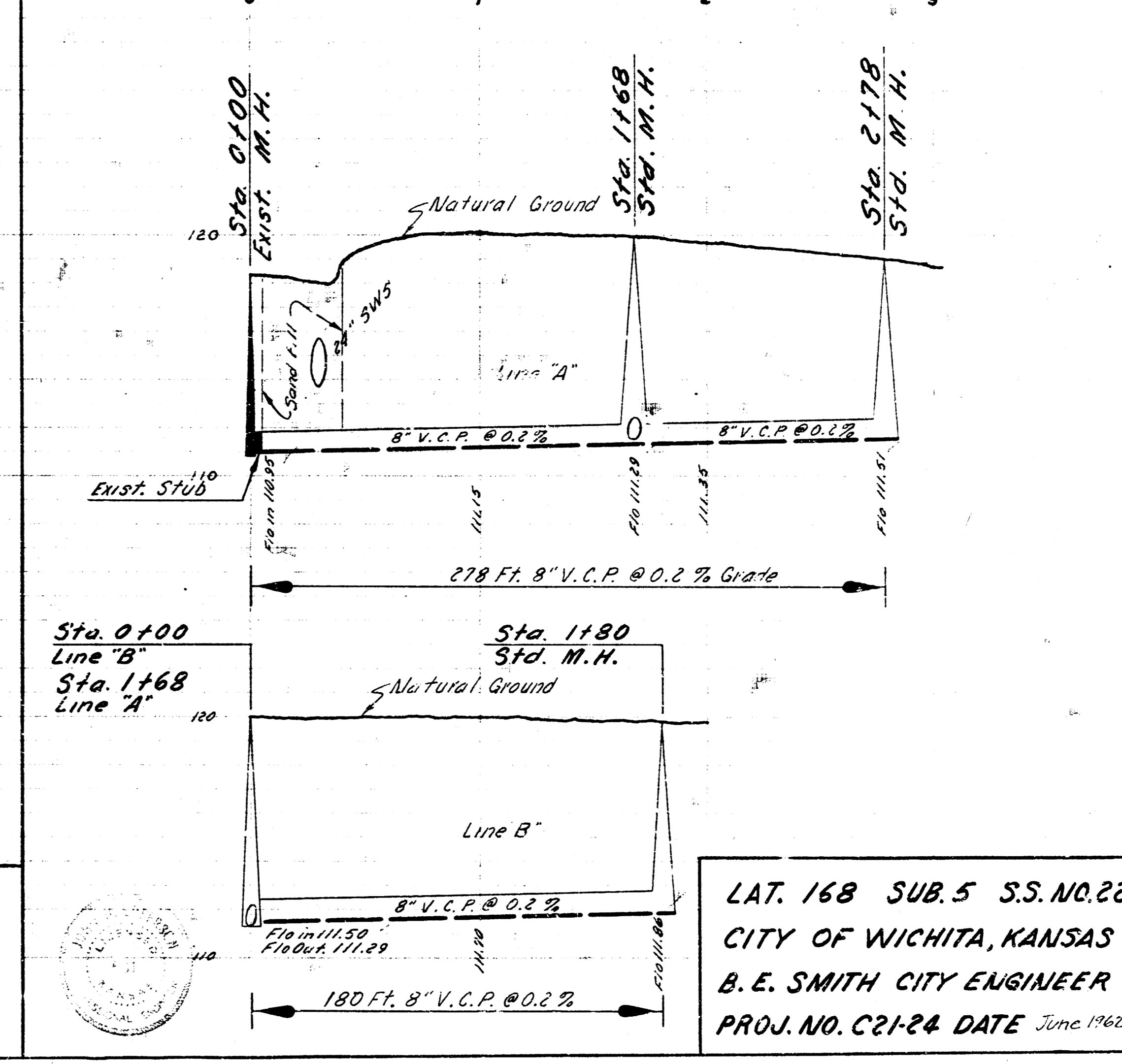
LAT. 164 SUBMAIN 5 S.S. NO. 22  
 CITY OF WICHITA KANSAS  
 B.E. SMITH CITY ENGINEER  
 PROJ. NO. C21-13 DATE



NOTE TO CONTRACTOR  
 Replace All Fences

B.M. 120.09 R.R. Sp.K. W.S.P. Pole S.S. 2<sup>ND</sup> 150' W. OF W. Line Florence  
 B.M. 120.17 R.R. Sp.K. W.S.P. Pole N.S. 2<sup>ND</sup> 150' E. OF E.L. Tracy  
 B.M. 118.57 N. RIM M.H. 135' E. OF E.L. Young & 22' N. OF  $\frac{1}{2}$  2<sup>ND</sup> ST.

PLAN SCALE 1" = 40'  
 PROFILE SCALE 1" = 40' HOR.  
 1" = 4' VERT.



LAT. 168 SUB. 5 S.S. NO. 22  
 CITY OF WICHITA, KANSAS  
 B.E. SMITH CITY ENGINEER  
 PROJ. NO. C21-24 DATE June 1962