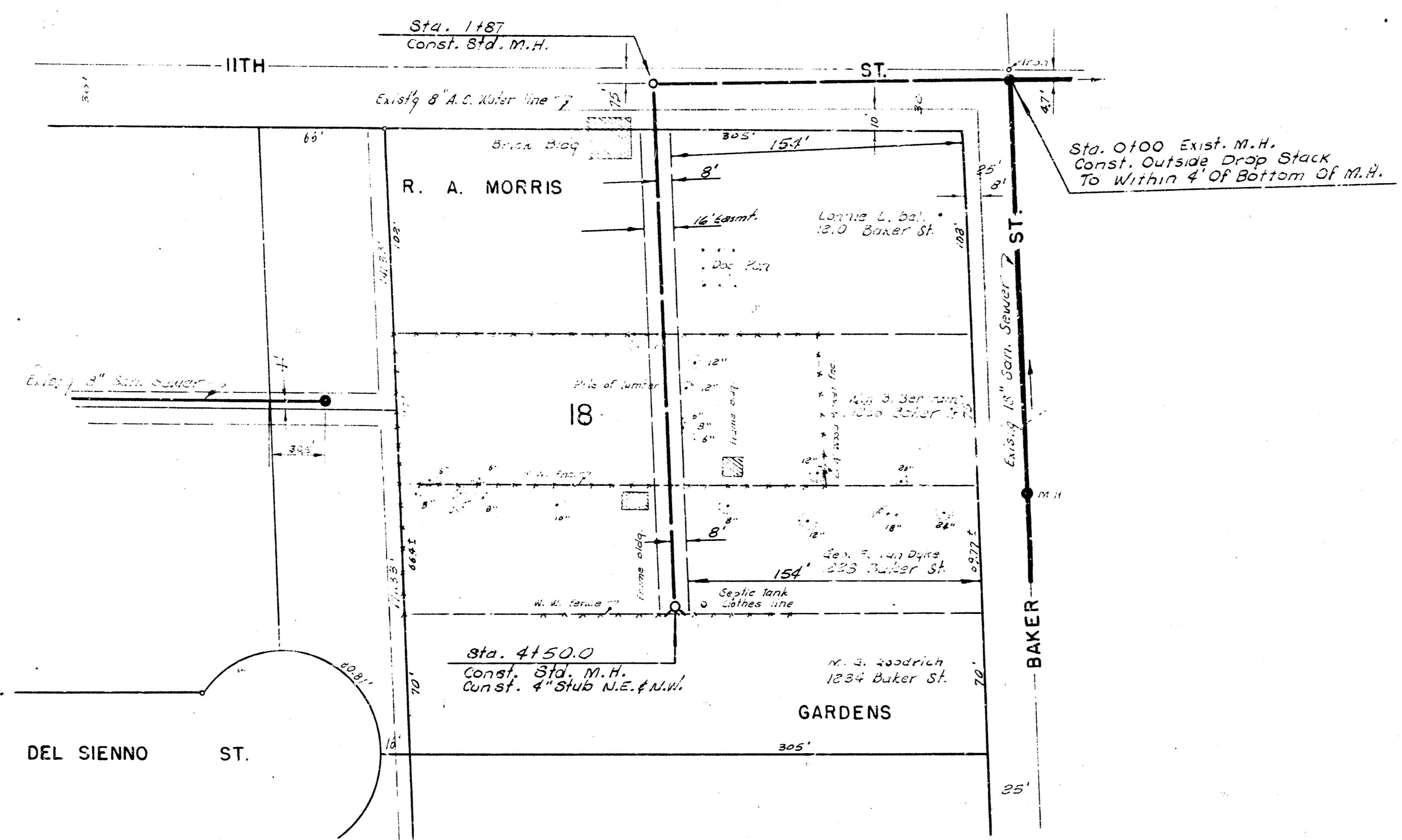
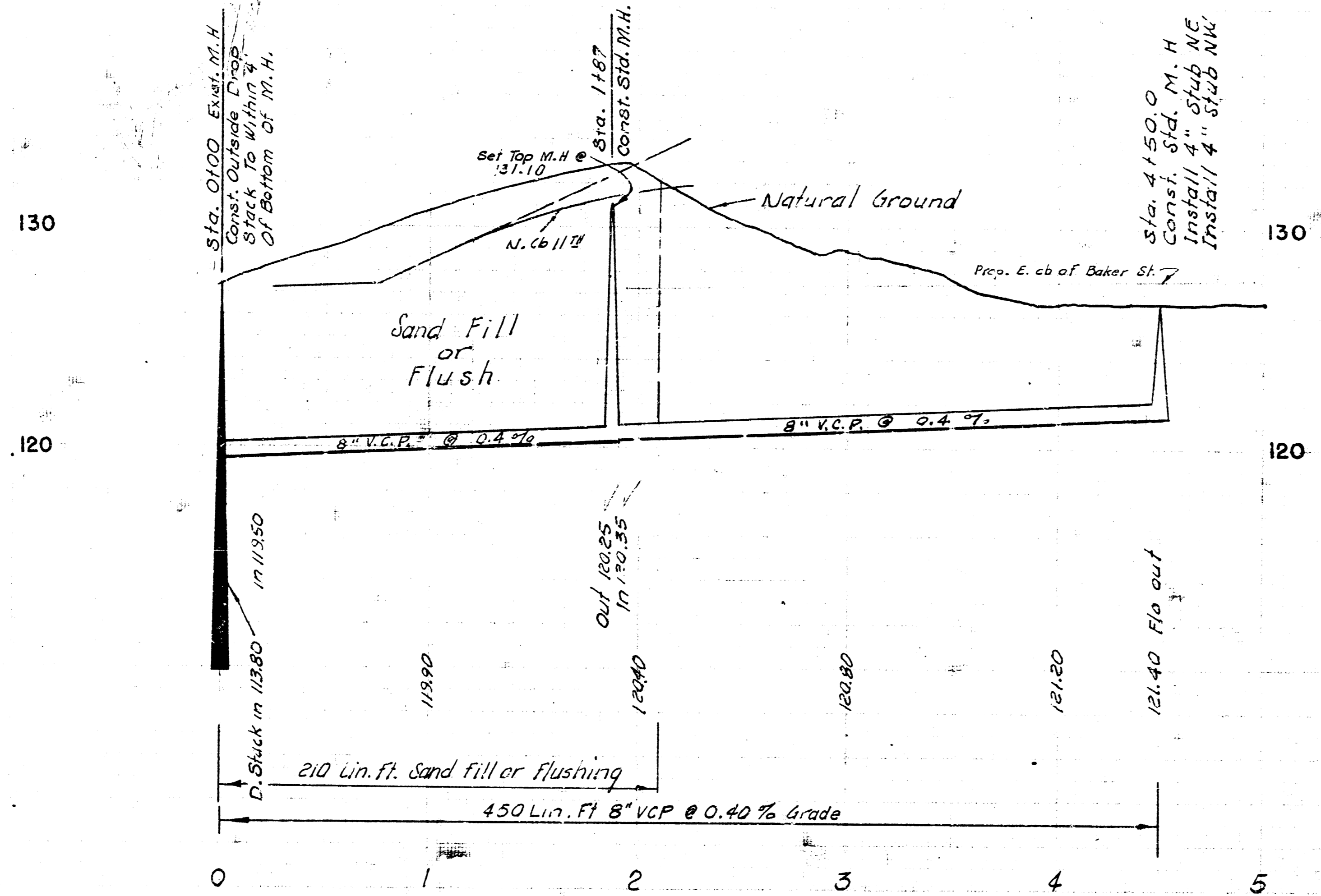


Box No. 1894
 Date 6/13/64



Plan Scale 1" = 40'
 Prop. Scale 1" = 40' (not used)

B. M. 13147 Step bench NS 1-2 43' S. of NW 1/4 of 18' E of E Baker.



LAT. 176, SUBMAIN 5, S. S. NO. 22
 CITY OF WICHITA, KANSAS
 B. E. SMITH CITY ENGINEER
 JUNE 1964 PROJECT NO. C23-104