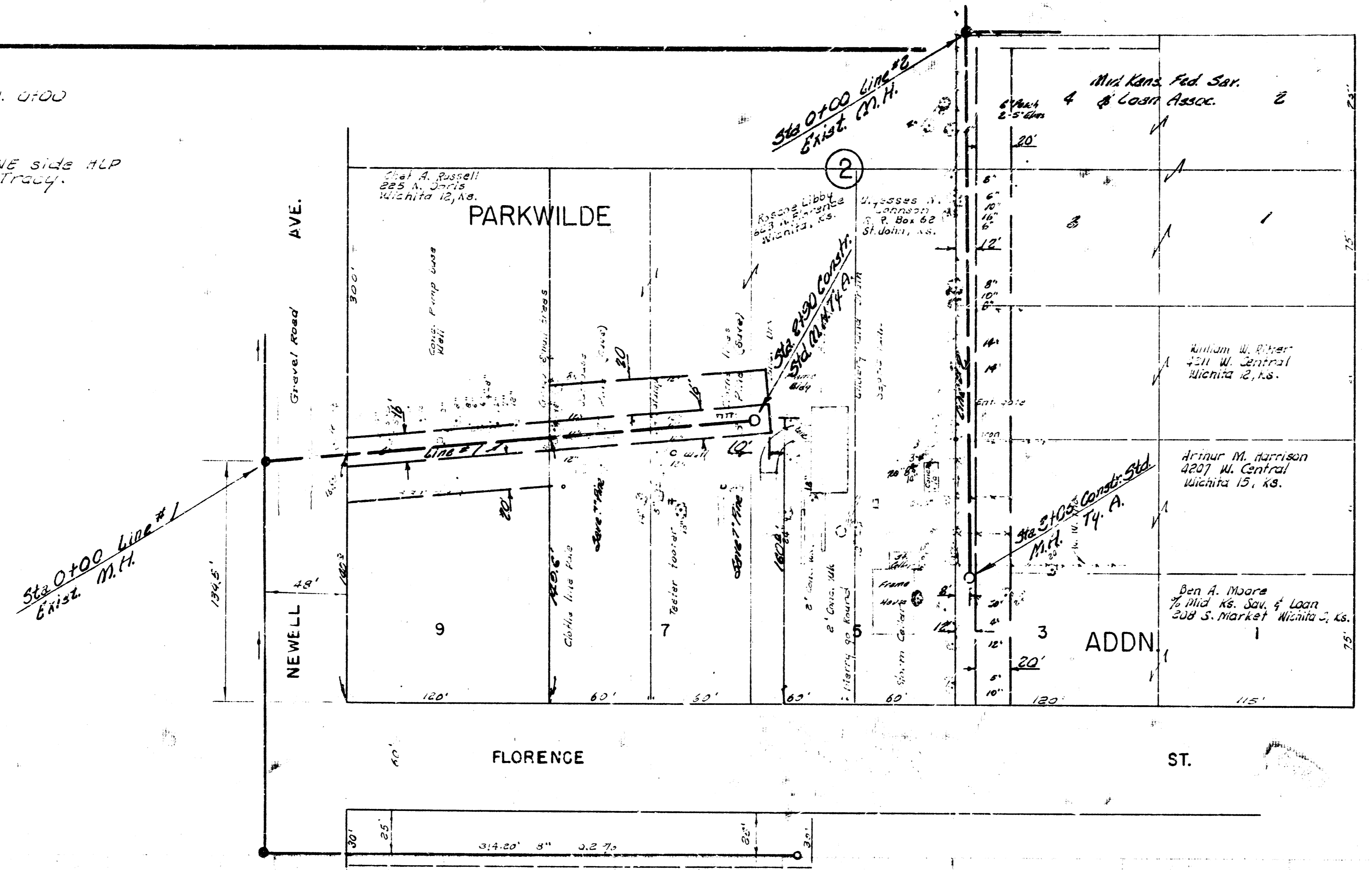


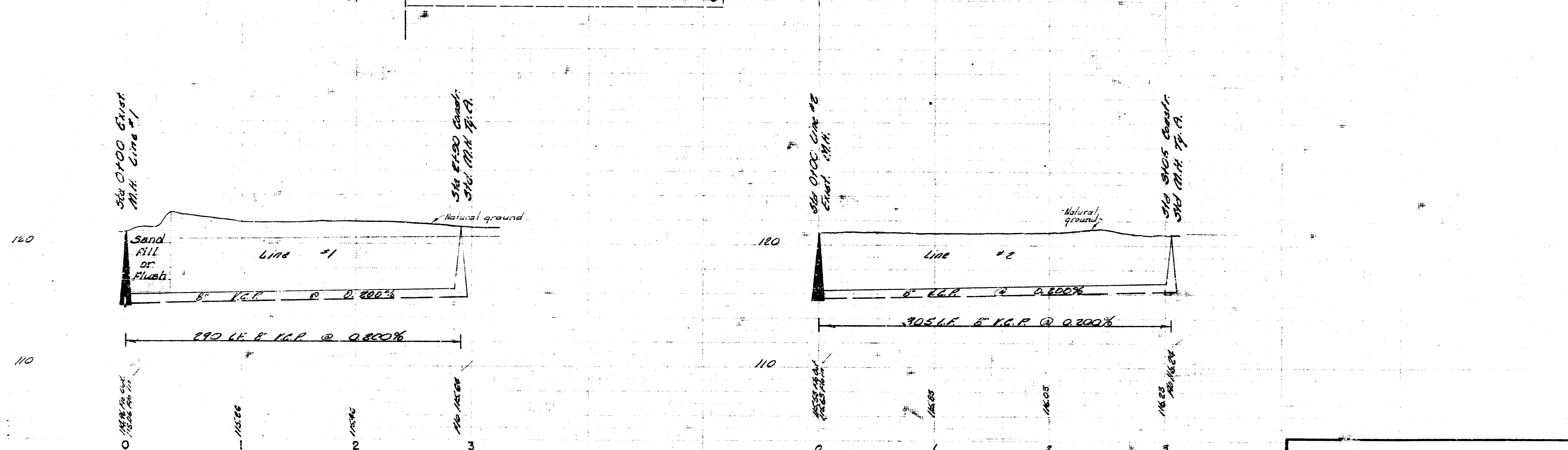
B. N. 2093 N. 21m M.H. 0700
 3. N. 2043 Step bench NE side MLP
 S. W. cor. Newell & Tracy.

Survey by J. H. Wipke Book No. 4-73
 Plan by J. Wipke
 Checked by J. Wipke
 Date



NOTE TO CONTRACTOR
 Do not replace fences, water
 well or clothes line poles.

Plan Scale 1" = 40' horiz.
 Profile Scale 1" = 4' vert.



LAT. 178, SUBMAIN 5, S. S. NO. 22
 CITY OF WICHITA, KANSAS
 B. E. SMITH CITY ENGINEER
 MAY 1967 PROJECT NO. C24-5