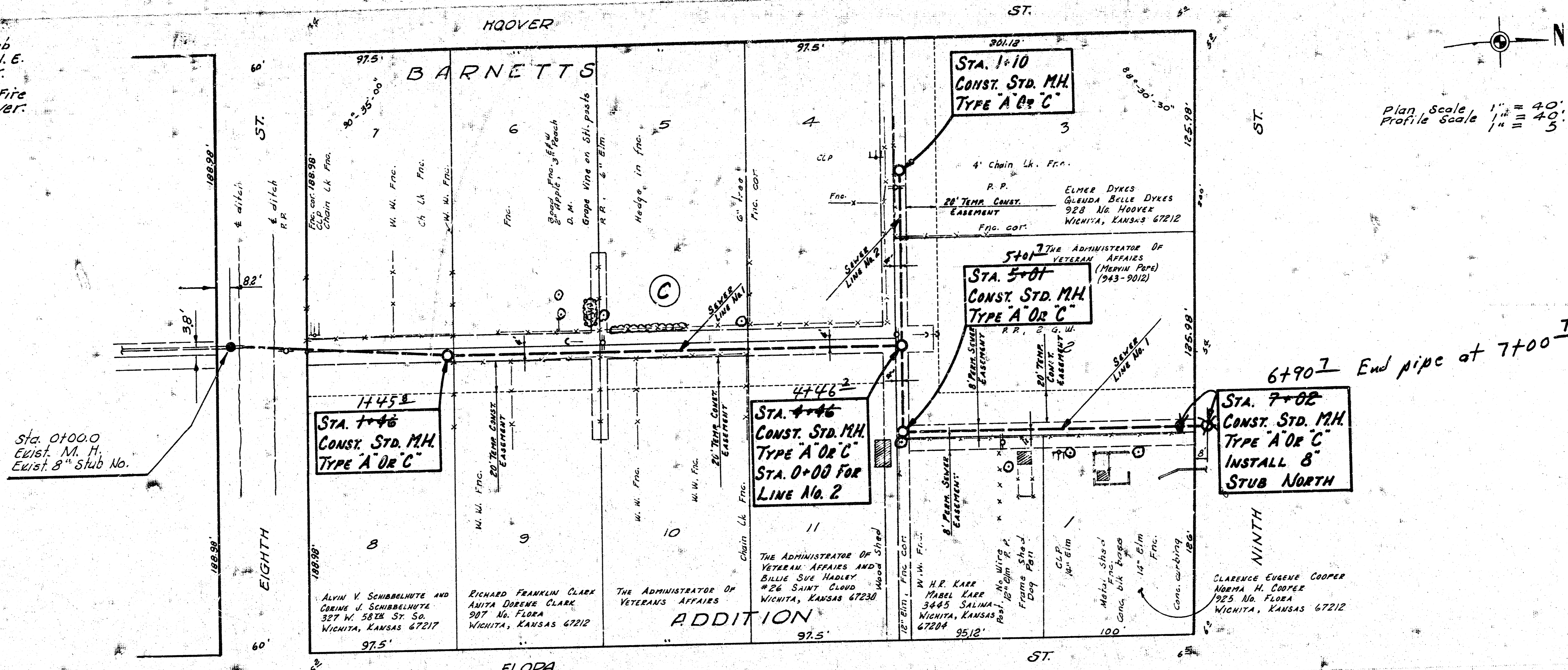
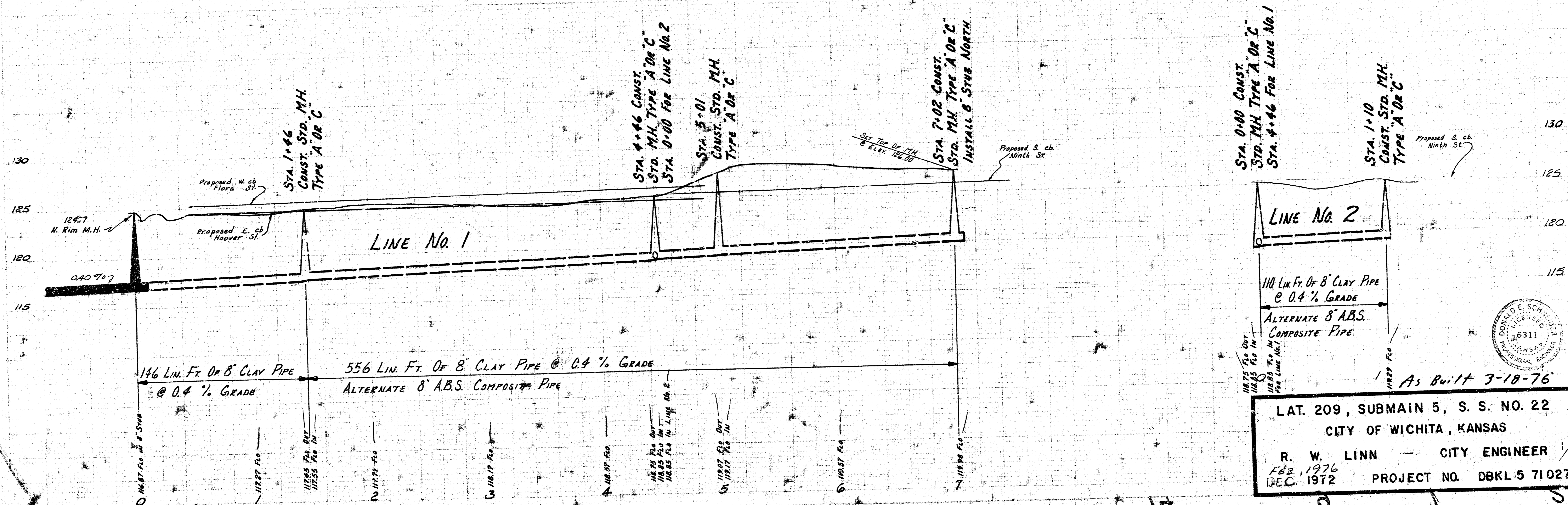


B. M. 124.52 S.W. cor. conc. slab @ S. door of house @ N.E. cor. Murdock & Hoover.
 B. M. 126.76 "M" in Mueller, Fire Hyd. S. E. cor. 8th & Hoover.



Plan Scale 1" = 40' Horiz.
 Profile Scale 1/4" = 5' Vert.

6+90.7 End pipe at 7+00.7



STA. 0+00 CONST. STD. MH. TYPE "A" OR "C"
 STA. 1+46 CONST. STD. MH. TYPE "A" OR "C"
 STA. 3+01 CONST. STD. MH. TYPE "A" OR "C"
 STA. 4+46 CONST. STD. MH. TYPE "A" OR "C"
 STA. 7+02 CONST. STD. MH. TYPE "A" OR "C" INSTALL 8" STUB NORTH
 STA. 7+08 CONST. STD. MH. TYPE "A" OR "C" INSTALL 8" STUB NORTH
 STA. 1+10 CONST. STD. MH. TYPE "A" OR "C"

LINE No. 2
 110 Lin. Ft. Of 8" CLAY PIPE @ 0.4% GRADE
 ALTERNATE 8" ABS. COMPOSITE PIPE
 As Built 3-18-76

LAT. 209, SUBMAIN 5, S. S. NO. 22
 CITY OF WICHITA, KANSAS
 R. W. LINN - CITY ENGINEER
 FEB. 1976
 DEC. 1972 PROJECT NO. DBKL 5 71027

