

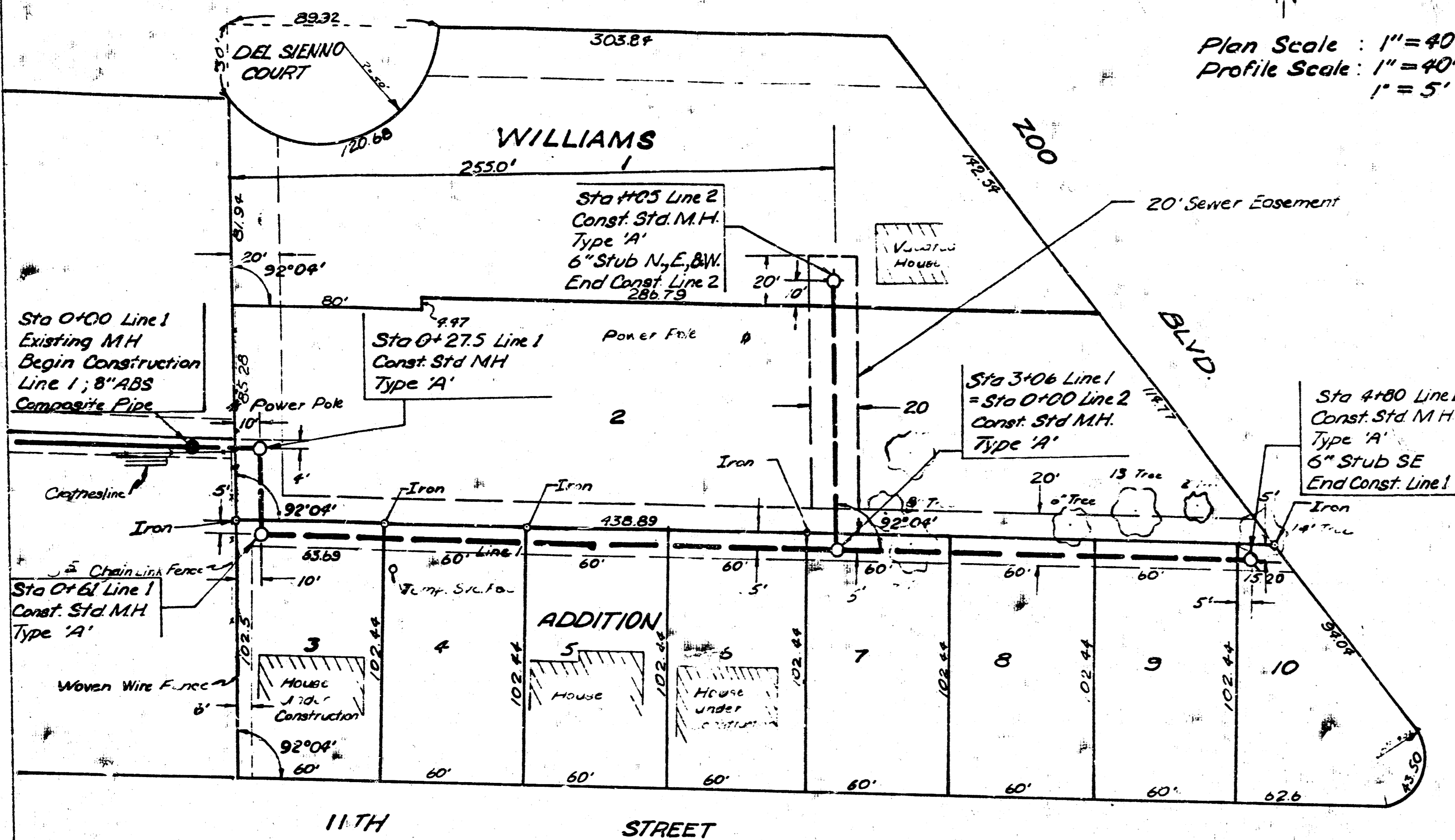
BM. 121.89 City Std. Disc 24' South & 52' West of E of West Street and Ninth Street.

Original filed in hold for R/W.

Field Engineer to make ties to all iron. Irons disturbed or destroyed are to be replaced.

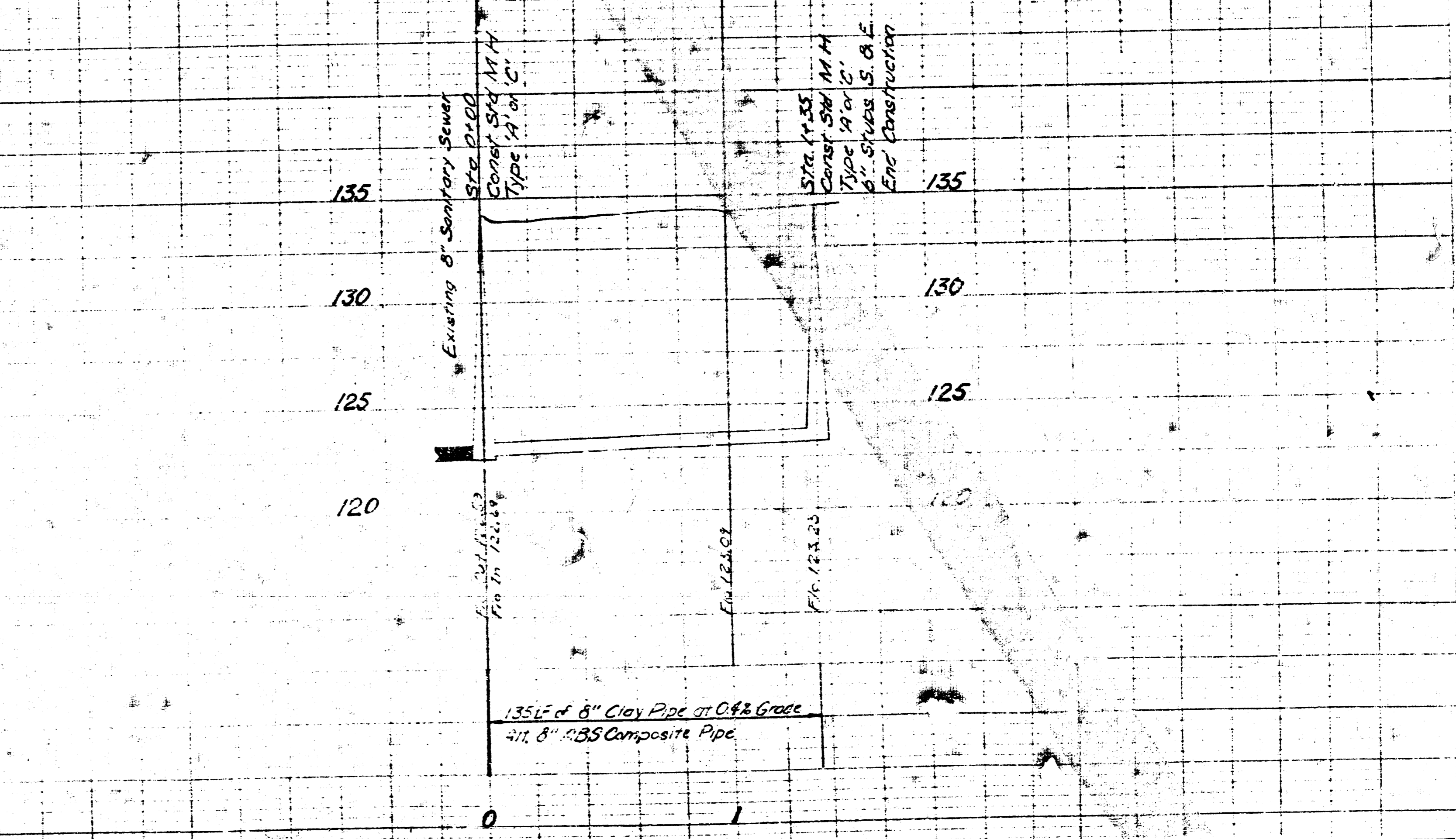
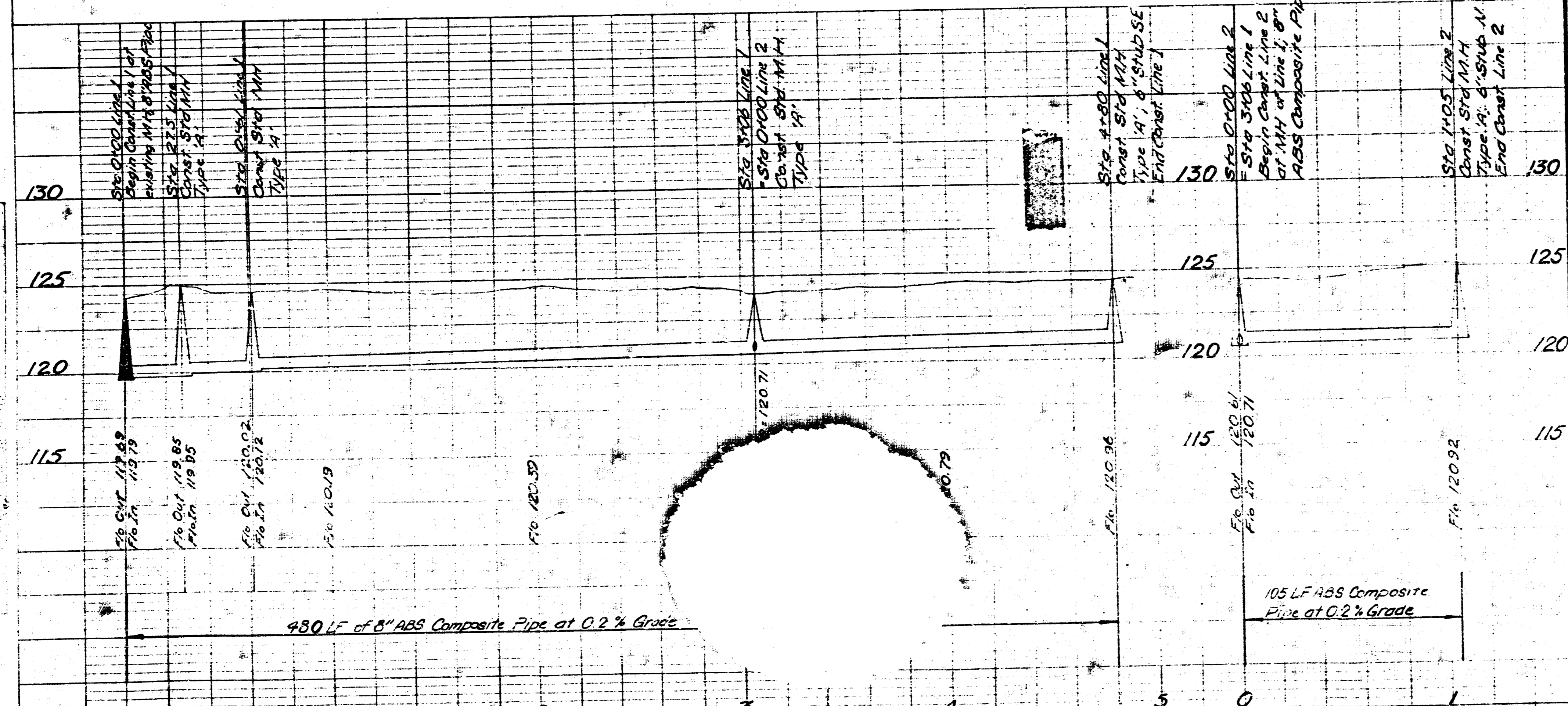
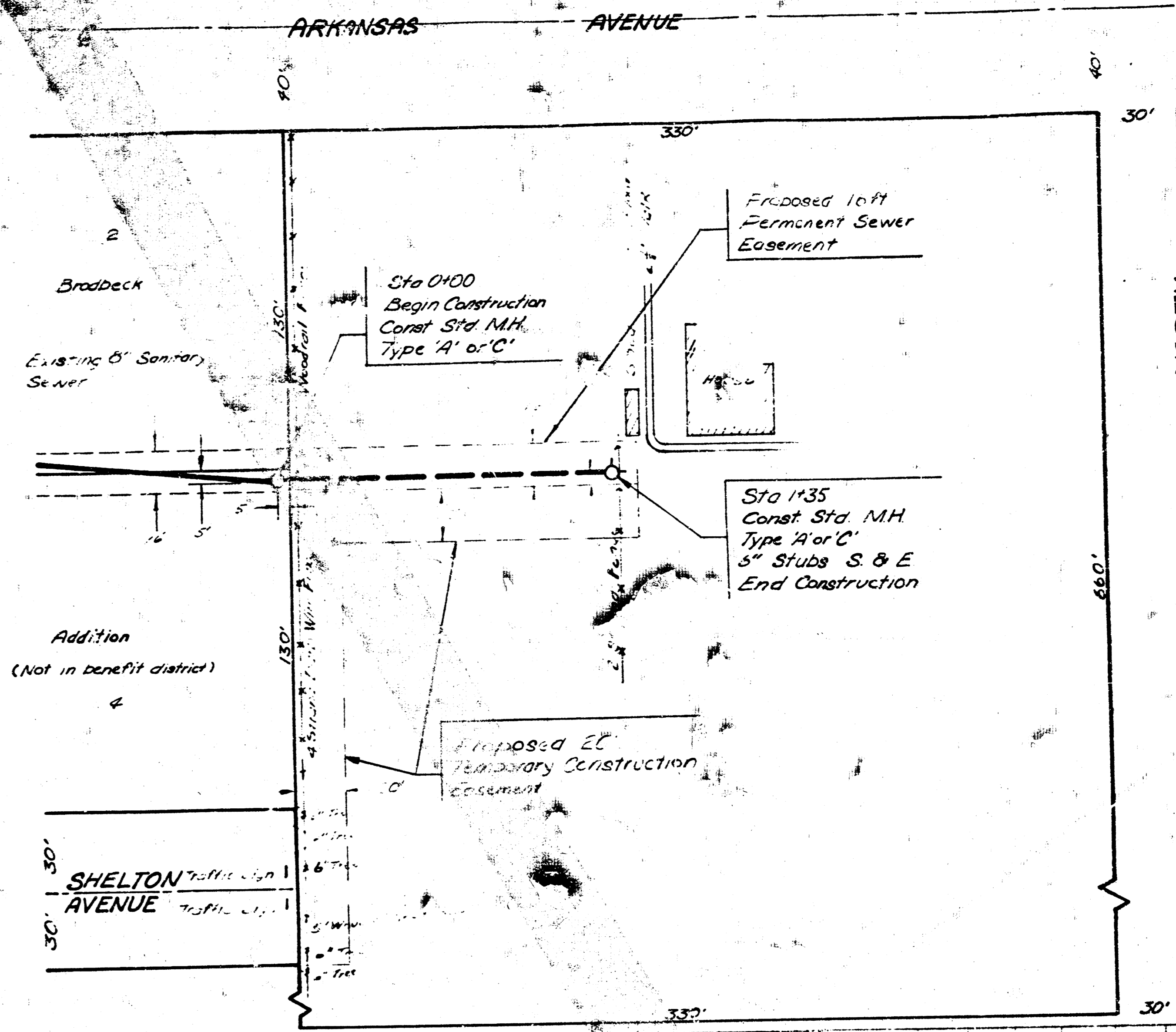
Tree removal is to be determined by the Field Engineer. All trees which can be saved will be saved.

Plan Scale: 1" = 40'
Profile Scale: 1" = 40' Horz.
1" = 5' Vert.



341.12381 City Std. Disc 32' South & 22' East of E of 33rd St North & Arkansas Avenue.
341.15246 Southeast corner concrete step of house # 3245 Arkansas Avenue.
341.13631 Top of East curb of Arkansas Ave at South line of 32nd St North being 29.5' South of thimble on E.

Plan Scale: 1" = 40'
Profile Scale: 1" = 40' Horz.
1" = 5' Vert.



LAT 222 MAIN 5 S.S. 22
CITY OF WICHITA, KANSAS
R.W. LINN CITY ENGINEER
DATE: PROJECT NUMBER: DBK1576059

LAT 91 MAIN 4 S.S. 23
CITY OF WICHITA, KANSAS
R.W. LINN CITY ENGINEER
DATE: PROJECT NUMBER: DBK1577008