

LATERAL 240, MAIN 5, S.S. 22

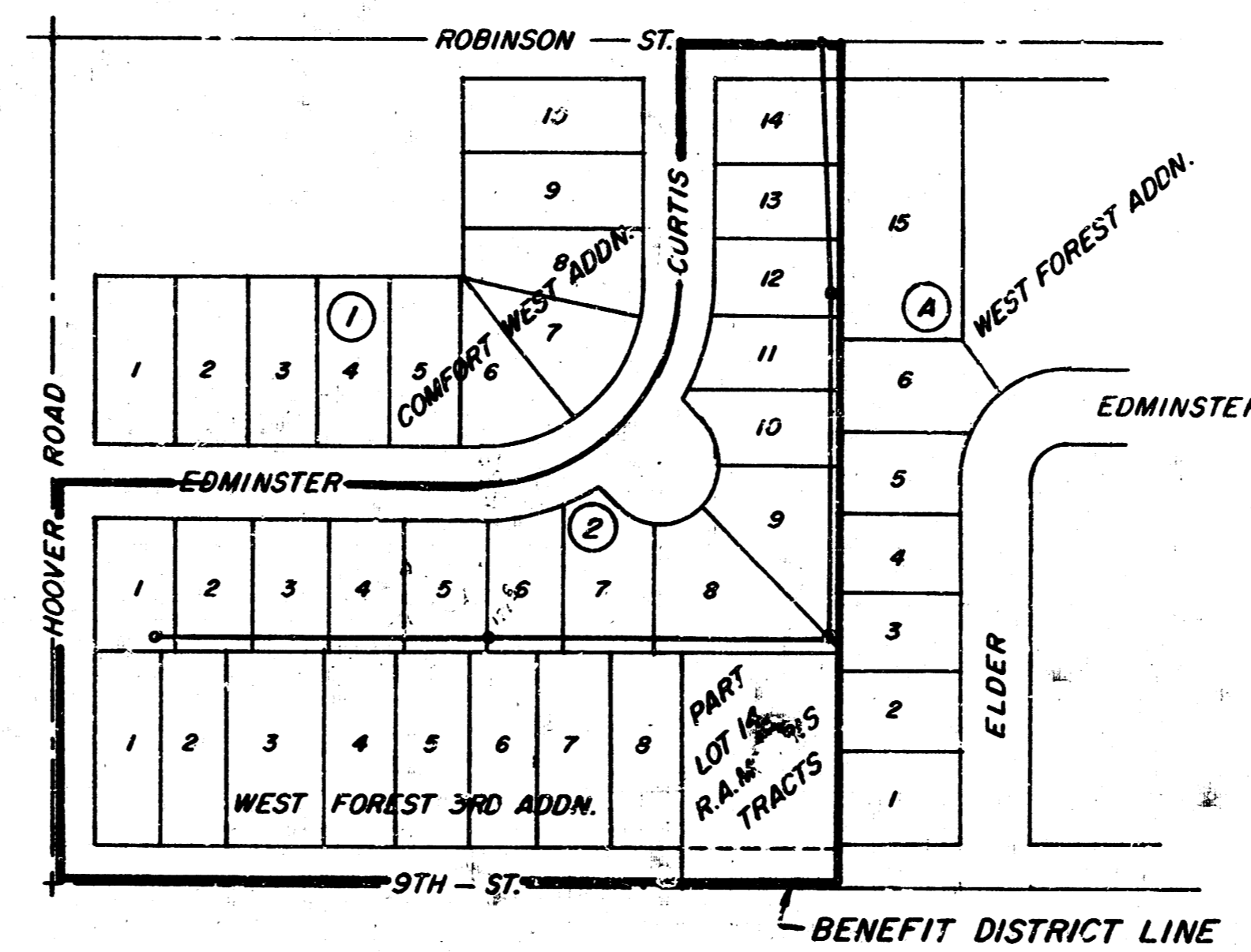
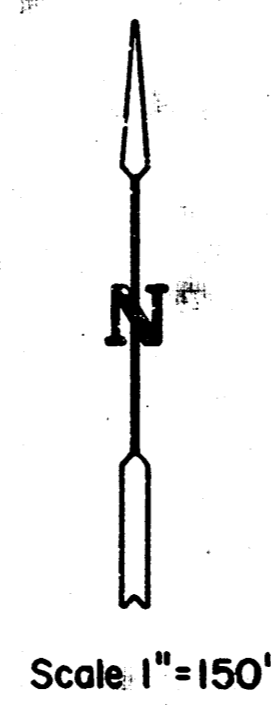
CITY OF WICHITA, KANSAS

M.E. LINDEBAK CITY ENGINEER

PROJECT NO. 468-76-245-81328-000-000-001

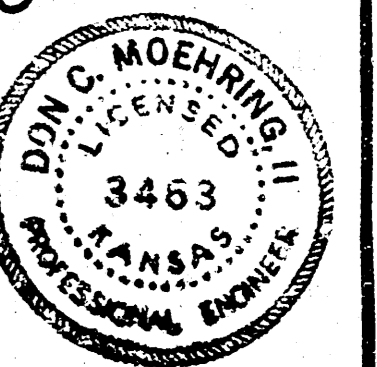
DATE: JANUARY 1984

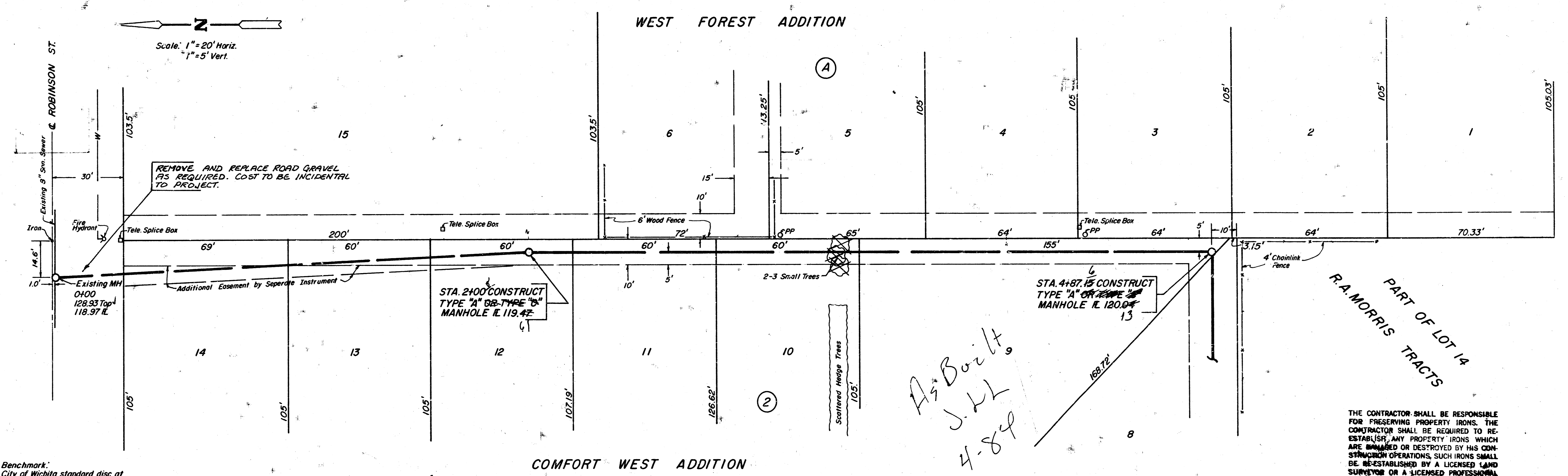
*As Built  
JHL  
4-84*



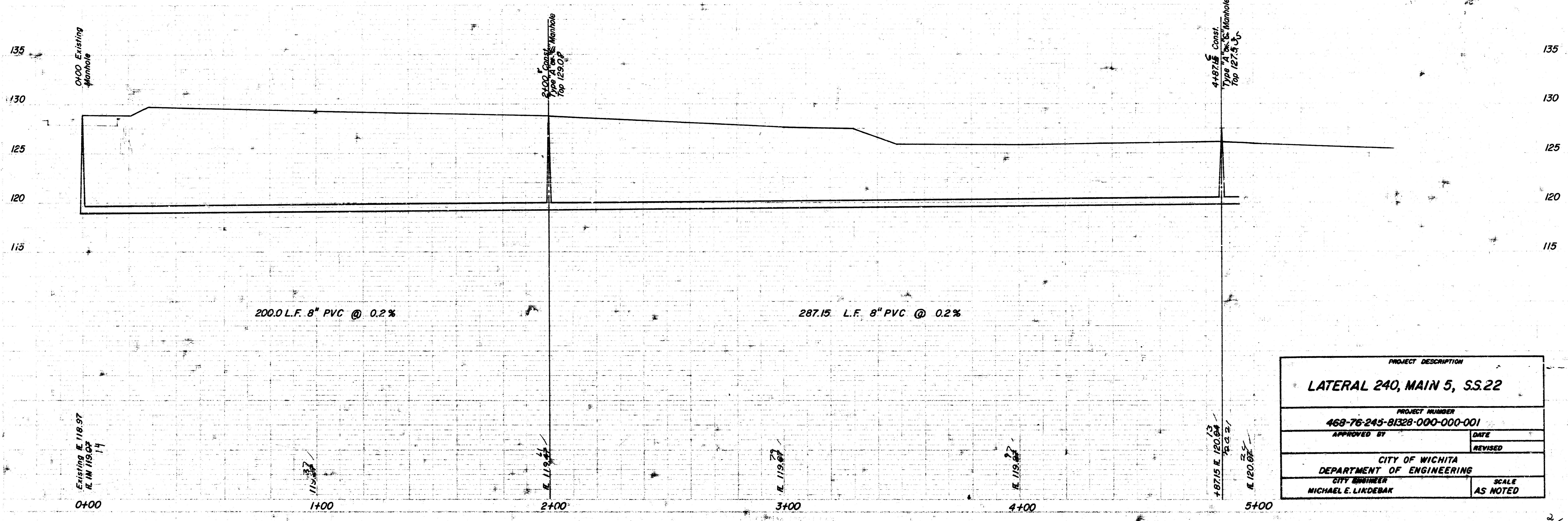
LOCATION MAP

MOEHRING & ASSOCIATES  
CONSULTING ENGINEERS  
WICHITA



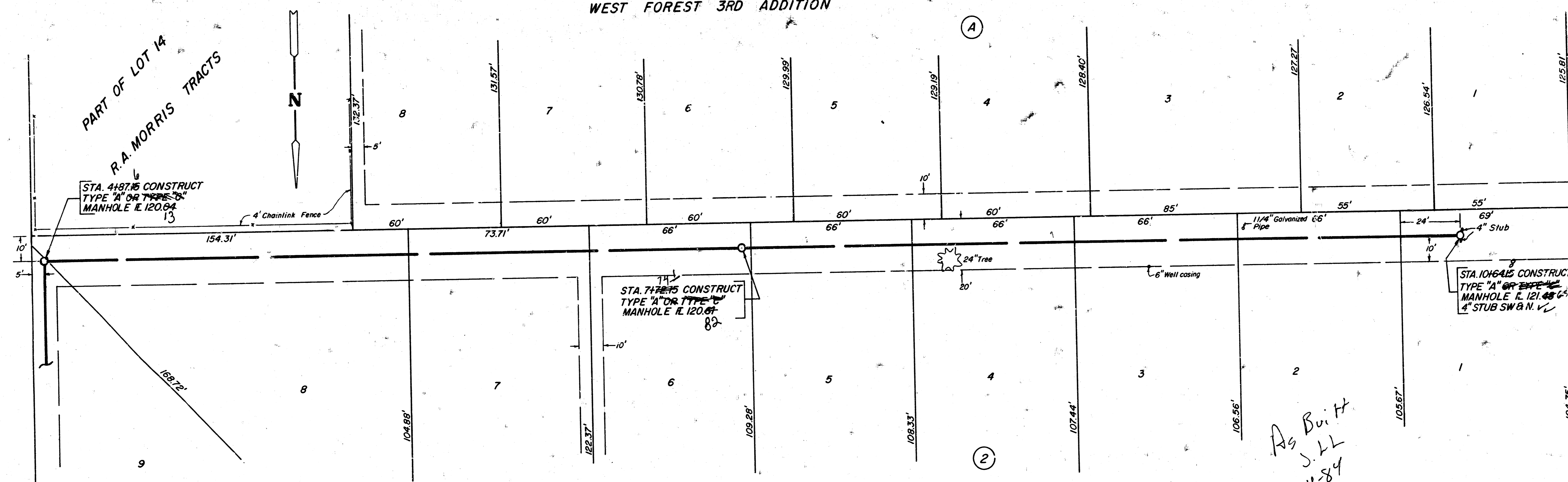


THE CONTRACTOR SHALL BE RESPONSIBLE FOR PRESERVING PROPERTY IRONS. THE CONTRACTOR SHALL BE REQUIRED TO RE-ESTABLISH ANY PROPERTY IRONS WHICH ARE DAMAGED OR DESTROYED BY HIS CONSTRUCTION OPERATIONS. SUCH IRONS SHALL BE RE-ESTABLISHED BY A LICENSED LAND SURVEYOR OR A LICENSED PROFESSIONAL ENGINEER IN ACCORDANCE WITH STATE LAWS.



PROJECT DESCRIPTION	
LATERAL 240, MAIN 5, SS.22	
PROJECT NUMBER	
468-76-245-81328-000-000-001	
APPROVED BY	DATE
MICHAEL E. LINDEBAK	12/2/14
CITY OF WICHITA	
DEPARTMENT OF ENGINEERING	
CITY ENGINEER	SCALE
MICHAEL E. LINDEBAK	AS NOTED

WEST FOREST 3RD ADDITION

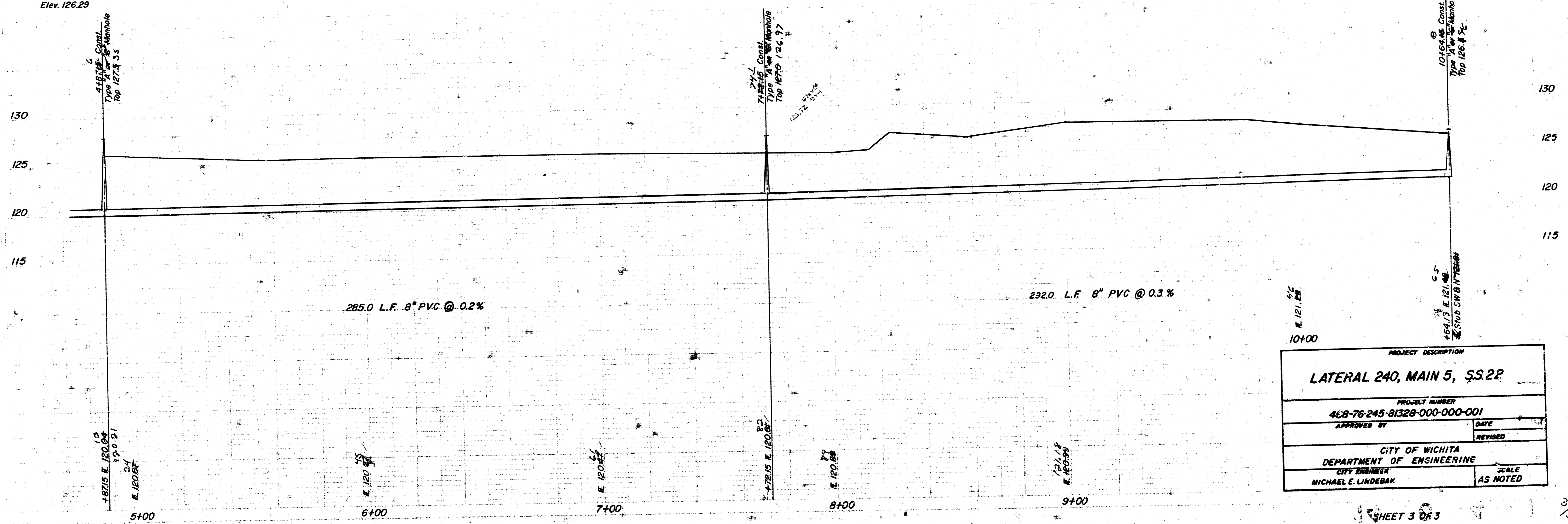


Benchmark:  
City of Wichita standard disc at  
the S.E. corner of intersection of  
Ninth and Hoover.  
Elev. 126.29

COMFORT WEST ADDITION

Scale  
1" = 20' Horiz.  
1" = 5' Vert.

As Built  
JLL  
4-84



PROJECT DESCRIPTION	
LATERAL 240, MAIN 5, §§.22	
PROJECT NUMBER 468-76-245-81328-000-000-001	
APPROVED BY	DATE
REVISOR	REVISION
CITY OF WICHITA DEPARTMENT OF ENGINEERING	
CITY ENGINEER MICHAEL E. LINDEBAK	SCALE AS NOTED

FILMED FROM THE BEST AVAILABLE COPY....