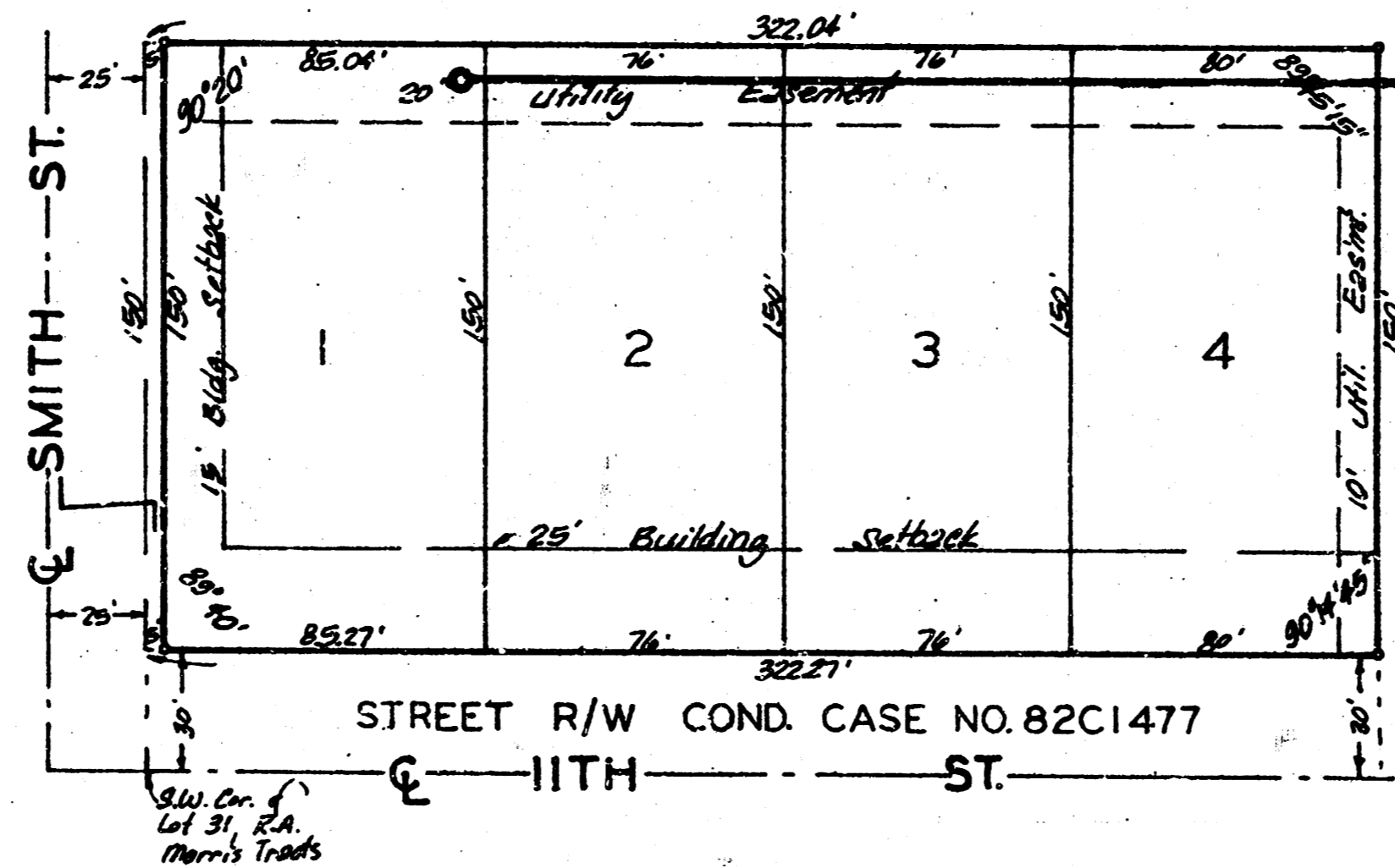
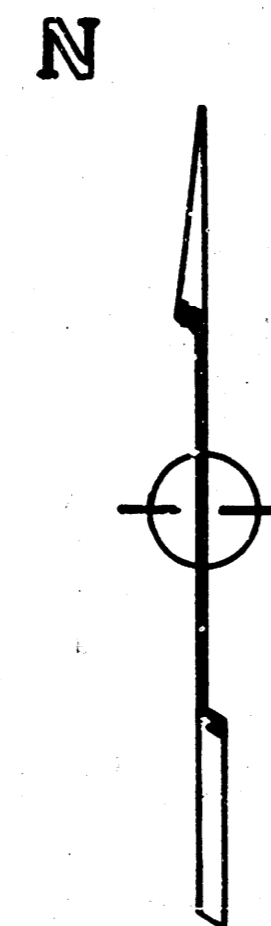


LATERAL 247 MAIN 5 S.S. 22

TO SERVE LOTS 1-4, WONG ADDITION

PROJECT NO.

468-76-245-81508-000-000-001



BENEFIT DISTRICT

CITY OF WICHITA, KANSAS
MICHAEL E. LINDEBAK
CITY ENGINEER.

GENERAL NOTES

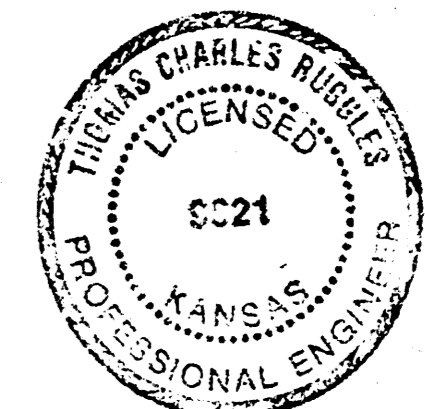
1. Notify the Following Companies prior to any trenching.

Kansas One Call	1-800-344-7233
Bell Telephone Co.	1-571-2115

In case of an emergency, notify the following companies:

Bell Telephone Co.	1-571-2115
Cablevision	266-6617
Gas Service Co.	263-7511
K&E Underground	261-6248
Arkla Gas Co.	942-8350

2. All block corners and control points will be protected. If removed during construction, Contractor will have them reoloced by a licensed engineer or land surveyor at his expense.



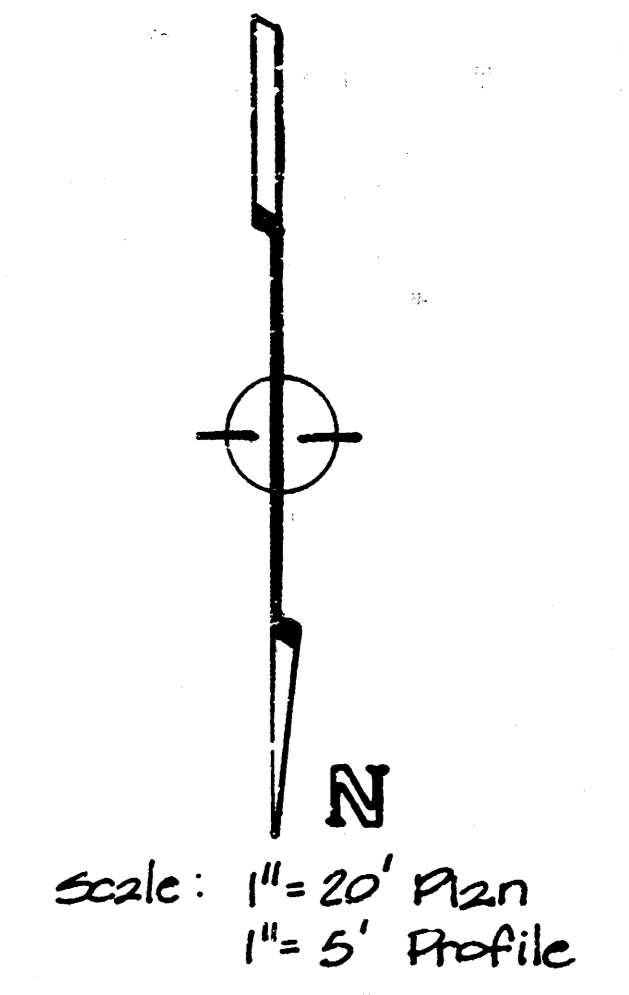
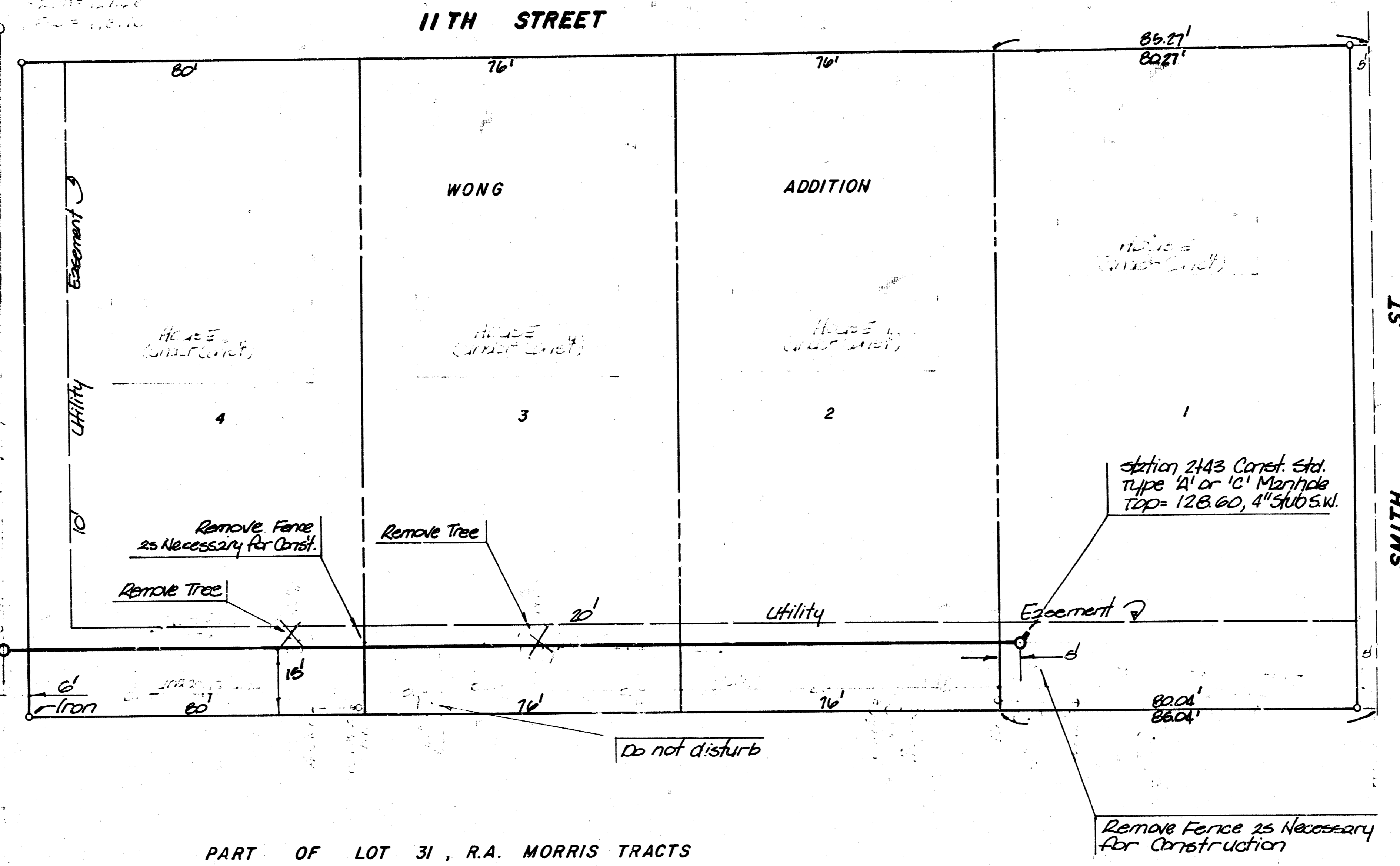
1/2 1/2

REVISIONS
 1. DATE 4-22-84
 2. DATE 4-22-84
 3. DATE 4-22-84

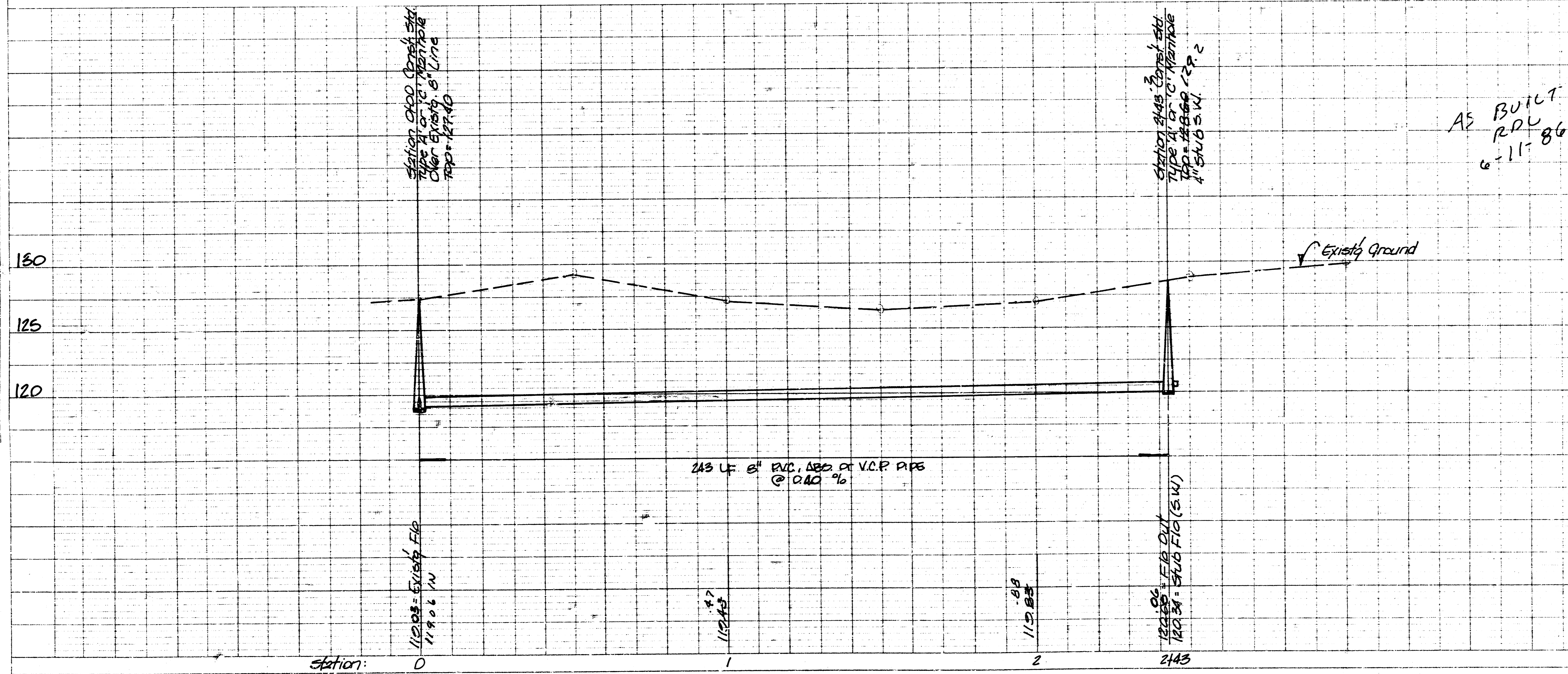
BAUGHMAN COMPANY, P.A.
SURVEYING & ENGINEERING
316282-7271 • 330 LAURA • WICHITA, KANSAS 67211

BENCH MARK: Railroad spike in Power Pole at the N.E. Corner of 11th St. & Smith Street Elevation = 126.92 City Datum

REPLAT OF PART OF LOT 31, R.A. MORRIS TRACTS



PART OF LOT 31, R.A. MORRIS TRACTS



AS BUILT RDU 6-11-86

**LATERAL 247, MAIN 5
SANITARY SEWER #22**
TO SERVE LOTS 1-4, WONG ADDITION
CITY OF WICHITA, KS
PROJECT NO.
468-76-245-81508-000-001
BAUGHMAN COMPANY, P.A.
SURVEYING & ENGINEERING
316.262.7271 330 LAURA WICHITA, KANSAS 67211

PLATE 1-SINGLE PLAN AND PROFILE-FULL LINE
PRINTED IN U.S.A.

41 3 3 2

PLAN SHEET NO. 08 4/22/86
FILE NO. 11-11-86
BY: [Signature]

PROFILE SHEET NO. 08 4/22/86
FILE NO. 11-11-86
BY: [Signature]