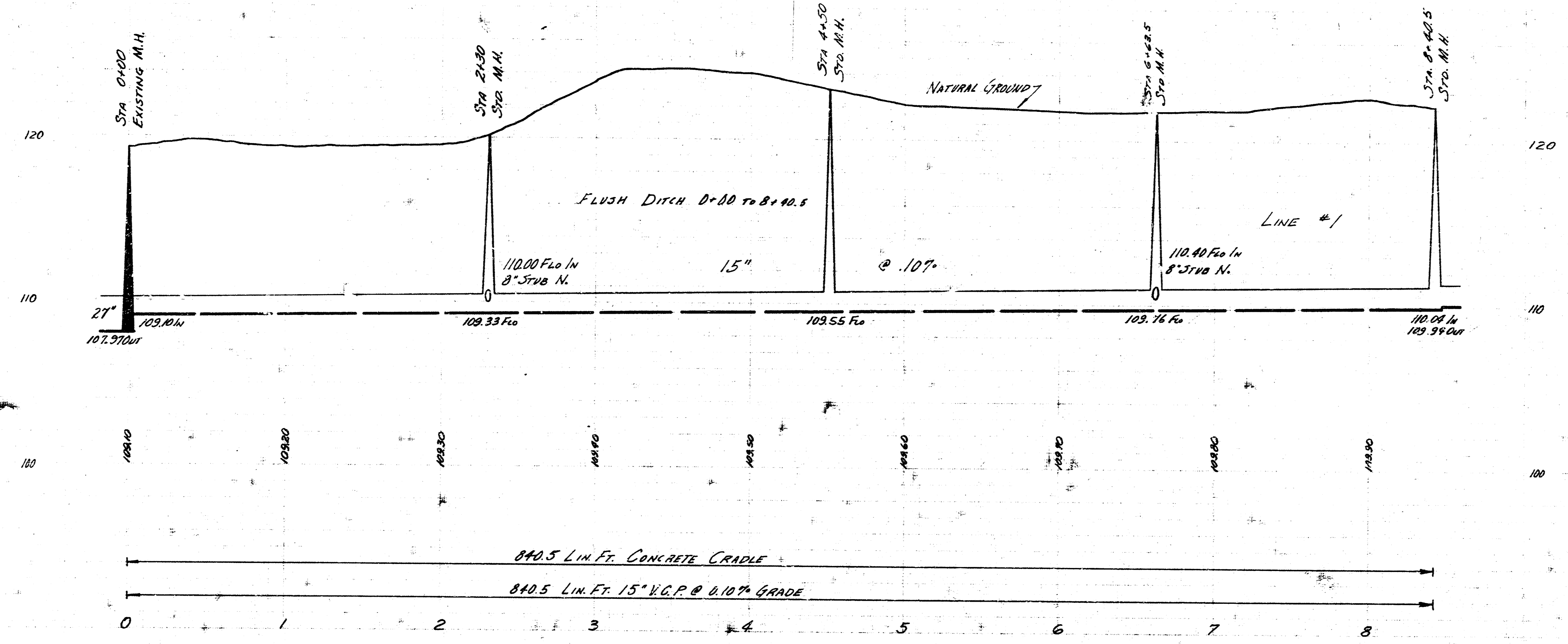


B.M. 121.082 SE Cor. Conc. Slab E.S. Ho. NW Meridian & 15th
 B.M. 124.15 NE Cor. Conc. Pav. Ho. 1001 NW Edwards & 15th
 B.M. 124.27 NW Cor. Pav. Slab W.S. Ho. 2517 SE Edwards & 17th
 B.M. 124.17 NE Cor. Conc. Pav. Ho. 2793 W. 18th (E. of St. Paul)
 B.M. 128.43 SE Cor. Pav. Ho. 1901 NW Sheridan & 18th
 B.M. 133.18 SE Cor. Conc. Pav. Ho. 1851 SW High & 18th
 B.M. 130.38 NW Cor. Pav. Ho. 3917 SE 76th & Juana
 B.M. 129.32 Corner Stone S.S. TP. NE Sheridan & 16th
 B.M. 124.41 NE Cor. Pav. at NE Co. Ho. 1835 SW Co. 16th & St. Paul

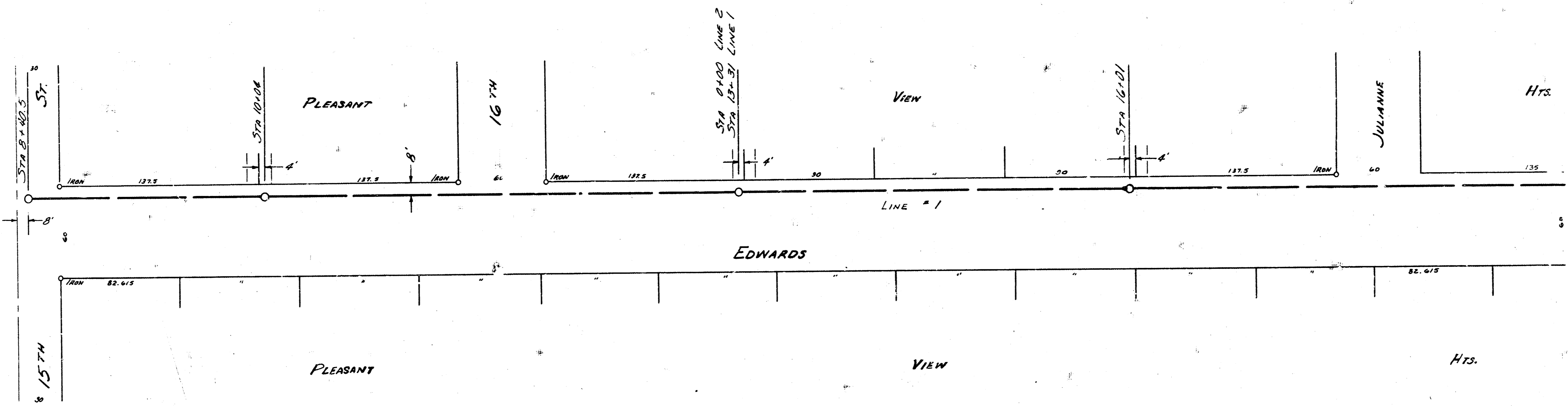
NOTE! The ditch is to be backfilled and flushed with the excavated material where the lines are under future pavements as shown on the plan. Should the excavated material be unsatisfactory for backfill, as determined by the engineer, the ditch shall be sand filled.

NOTE! 8" stubs out of M.H.'s are to be extended to the edge of the excavation. The pipe is to be supported by 2 sack concrete beyond the brick pier. The cost of the 2 sack concrete shall be considered included in the bid price of the M.H.

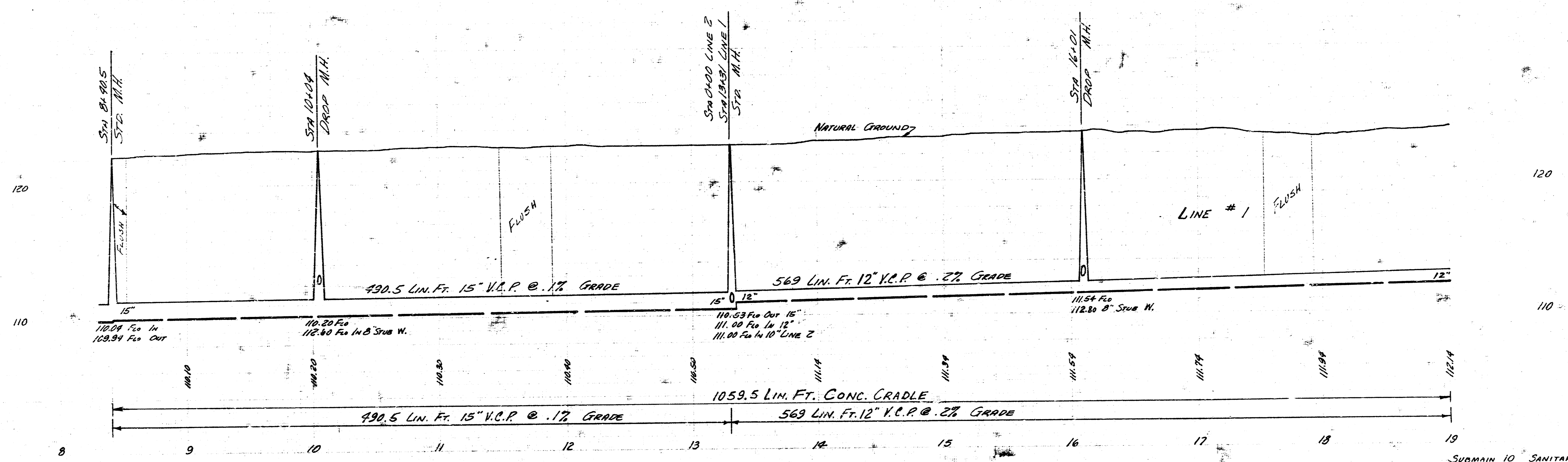
PLAN SCALE 1"=40'
 PROFILE SCALE 1"=40' HOR. 1"=8'



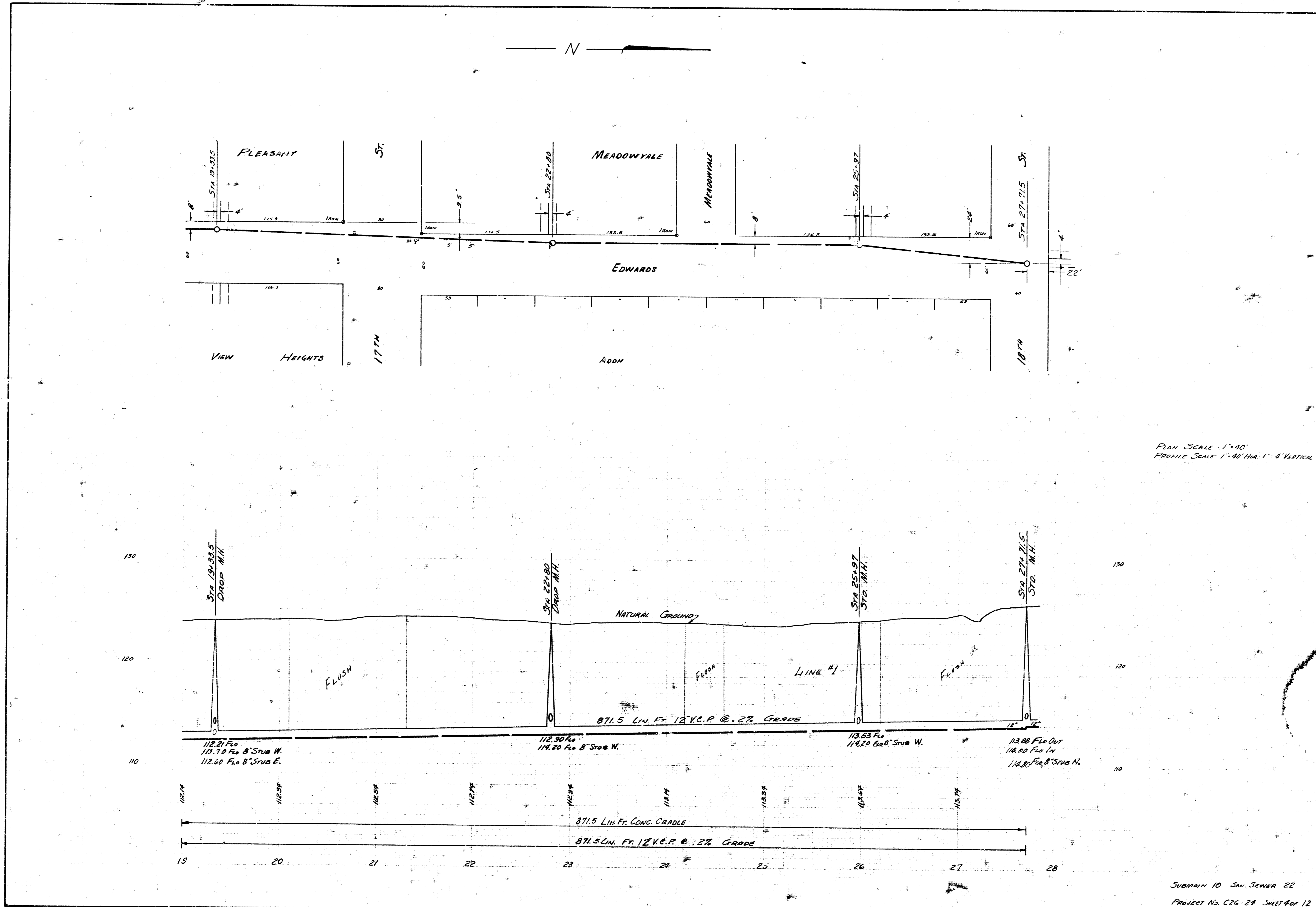
SUBMAIN 10 SAN SEWER 22
 PROJECT No. 26-24 SHEET 2 OF 12

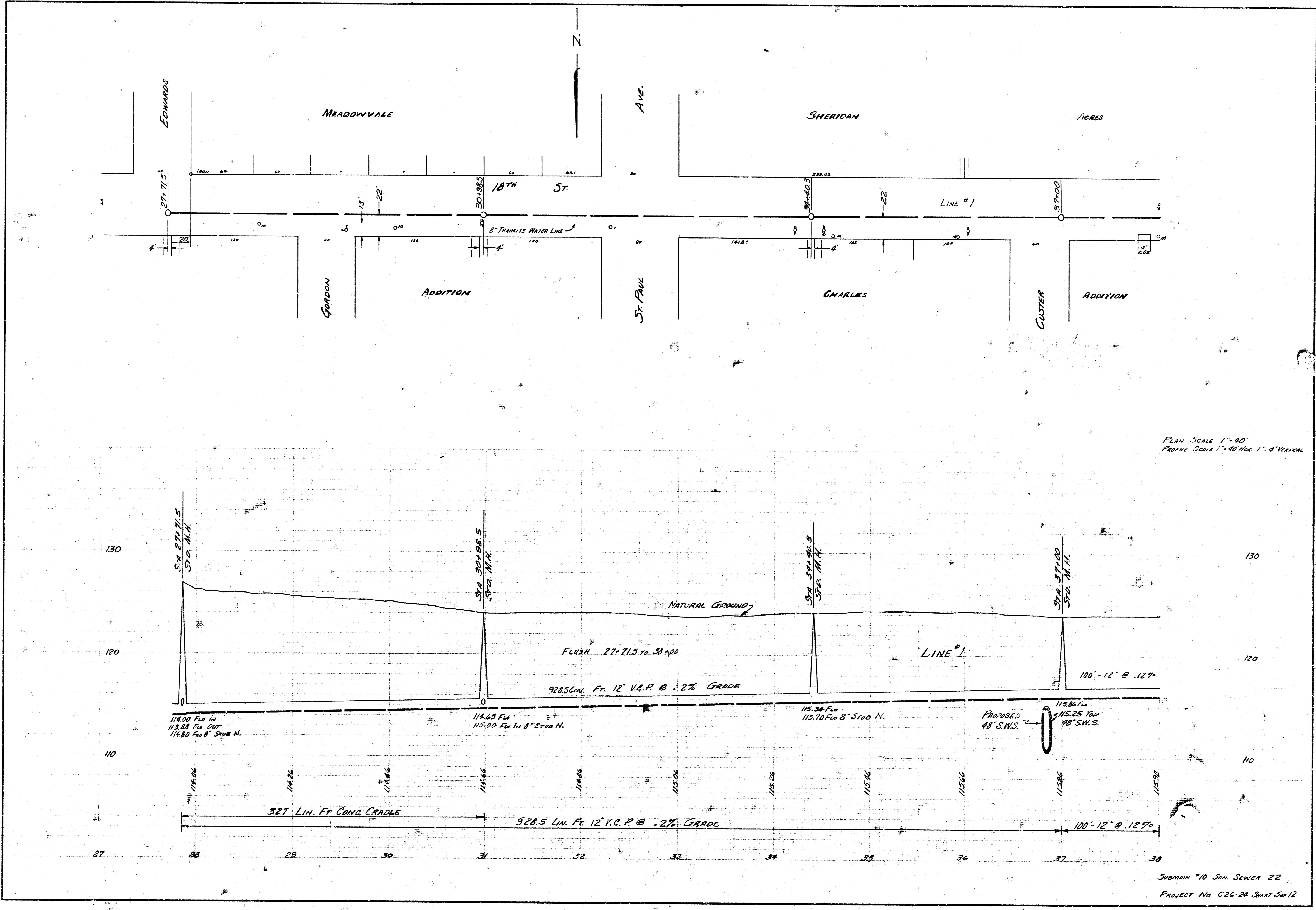


PLAN SCALE 1"=90'
PROFILE SCALE 1"=90' HOR. 1"=4' VERTICAL

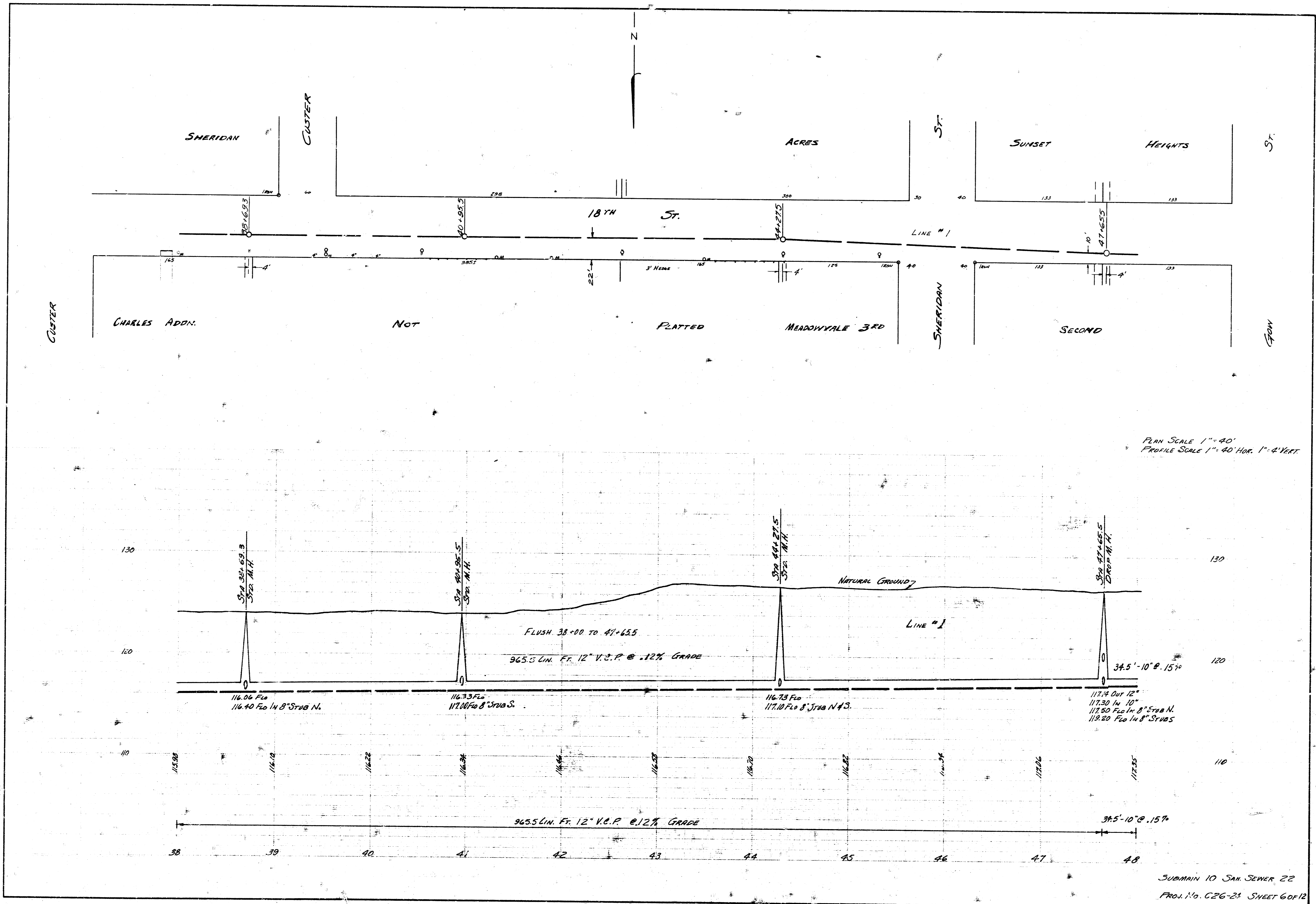


SUBMAIN 10 SANITARY SEWER 22
PROJECT No. C26-24 SHEET 3 OF 12

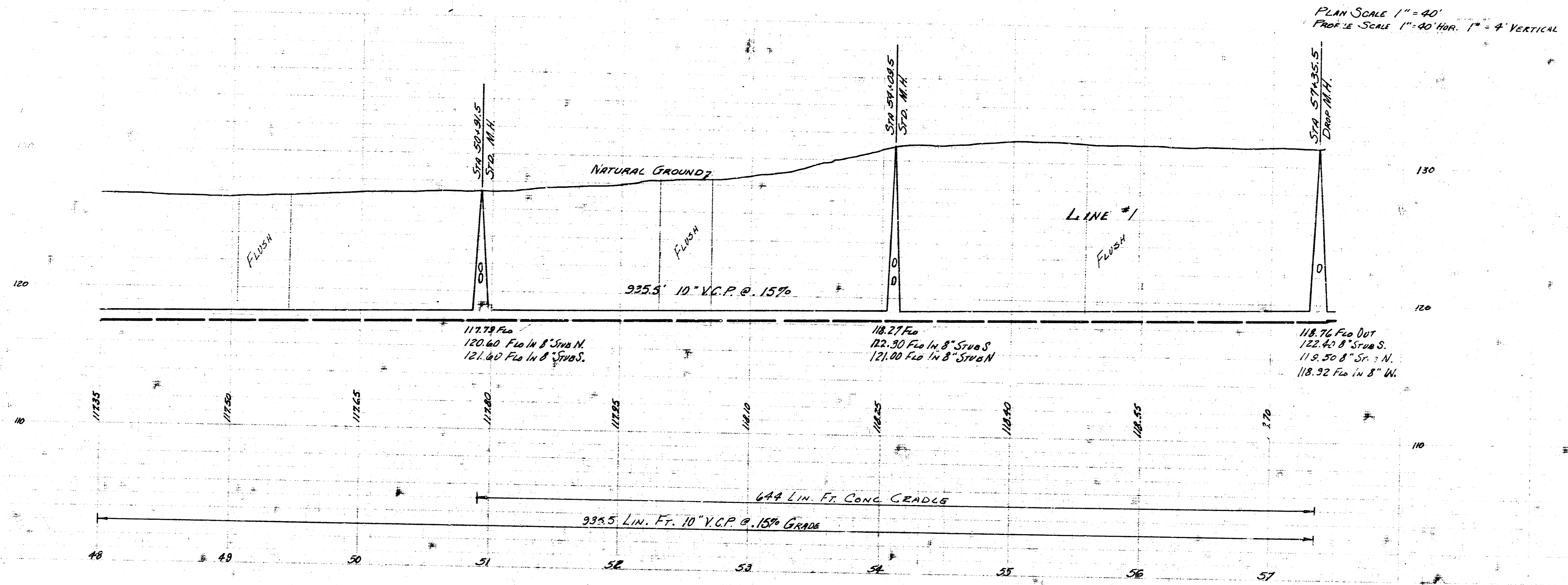
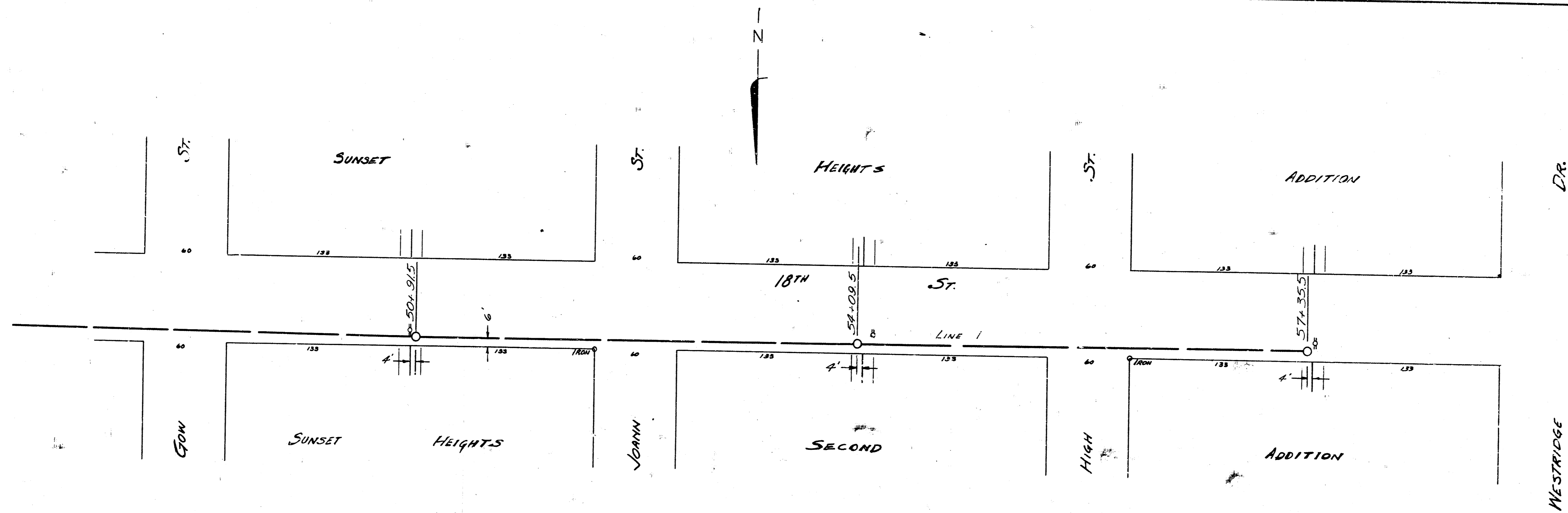


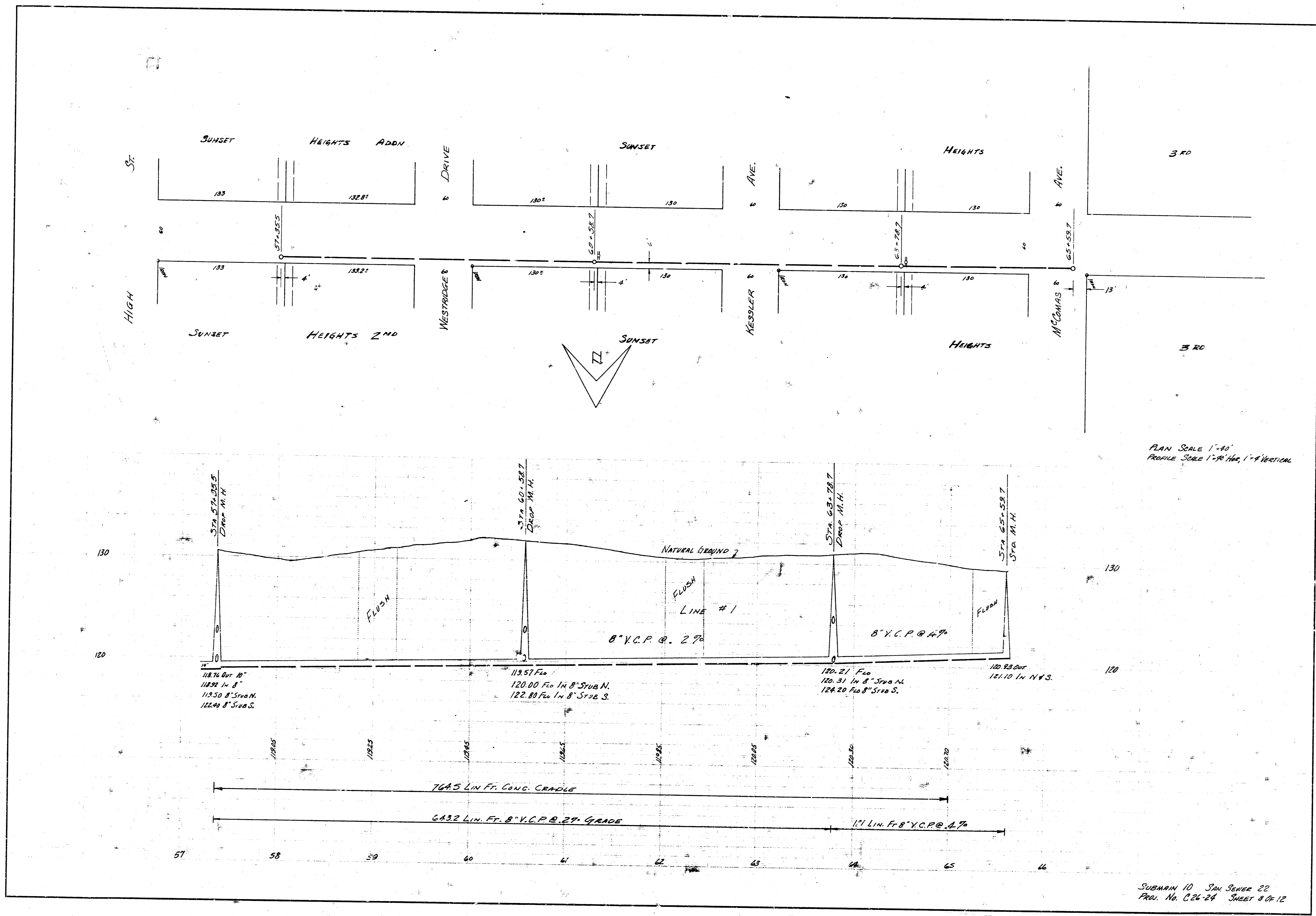


SUBMIT #10 SAN. SEWER 22
 PROJECT NO. C26-24 SHEET 5 OF 12



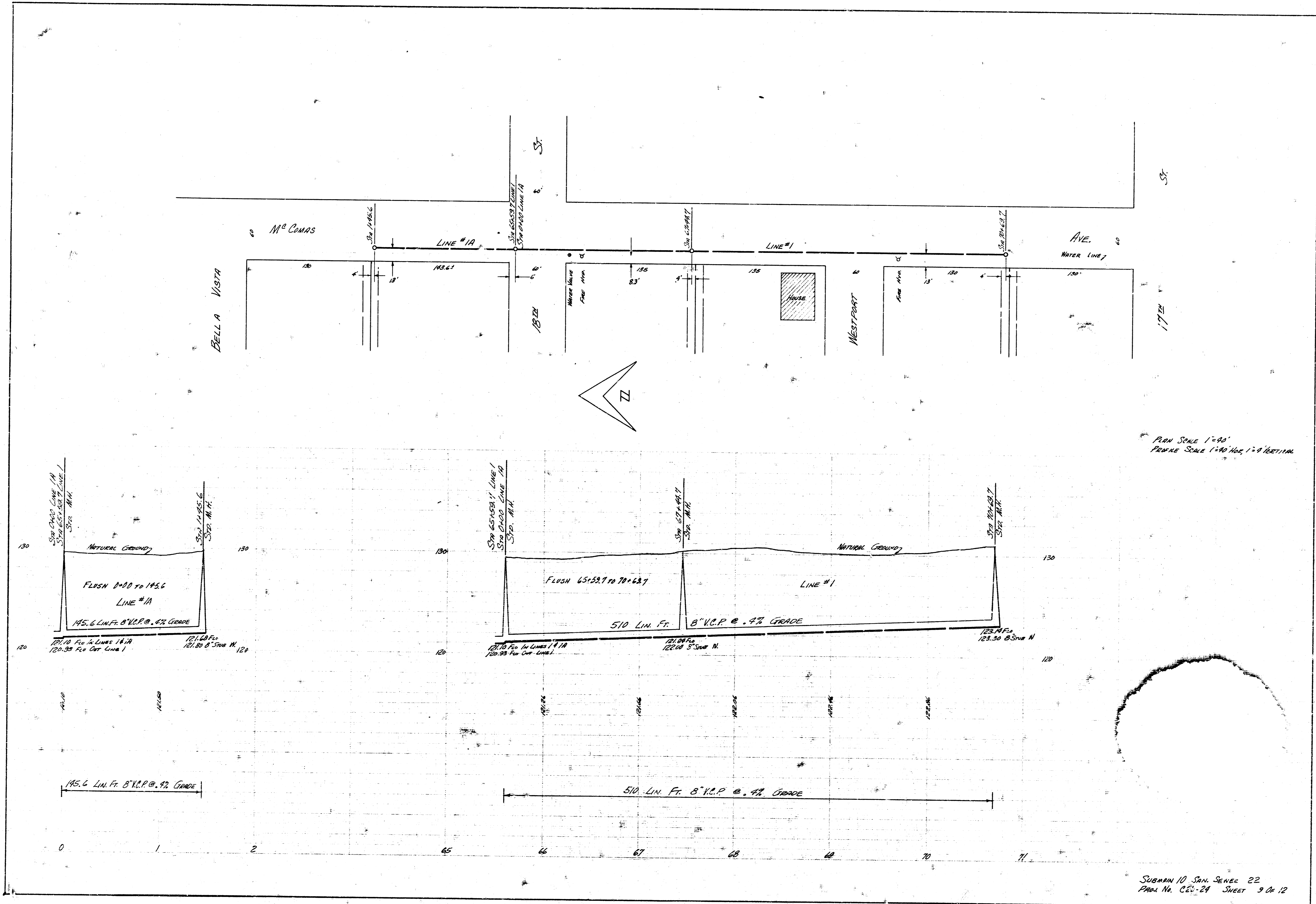
SUBMIT 10 SAN SEWER 22
 PROJ. NO. G26-21 SHEET 6 OF 12



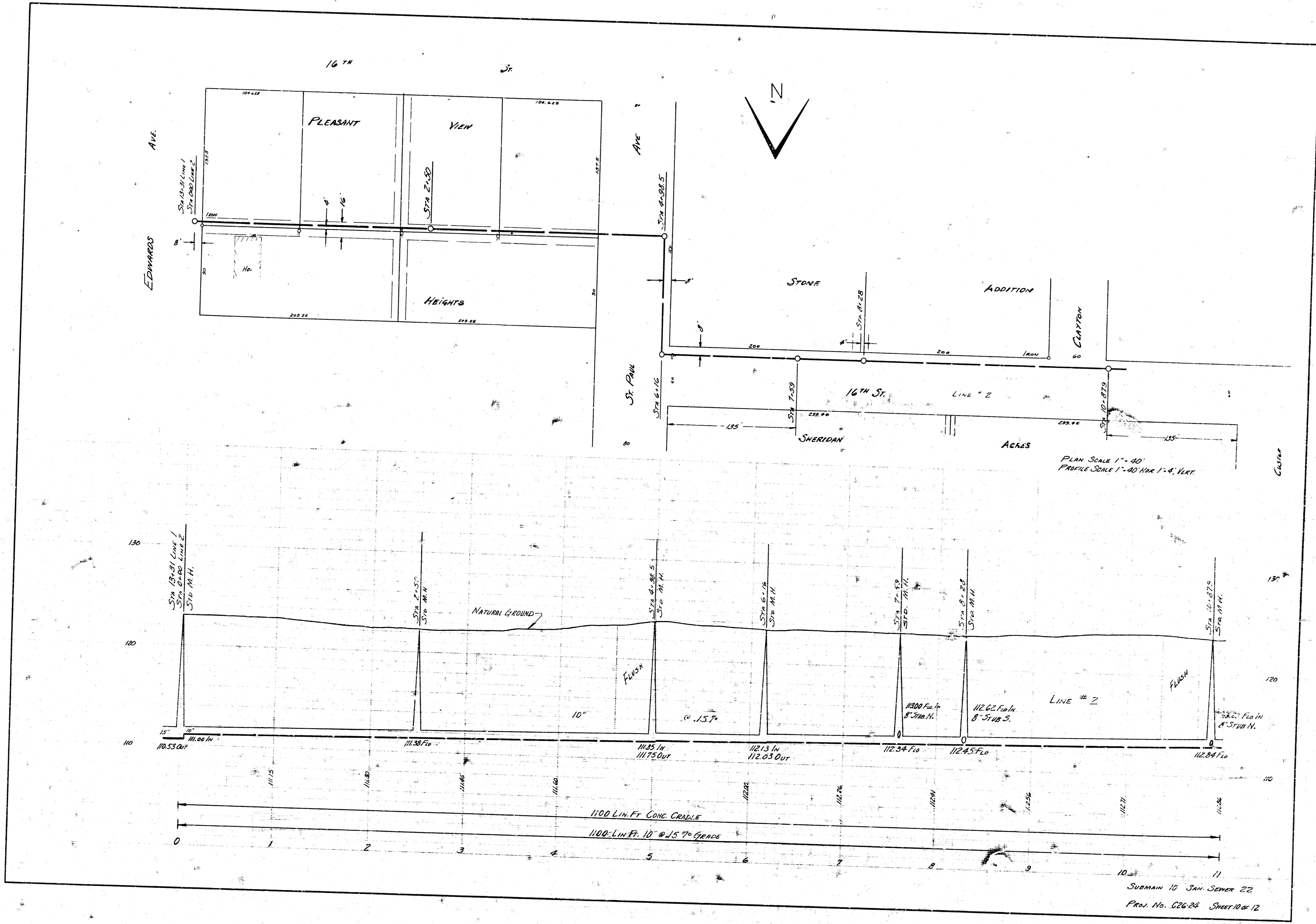


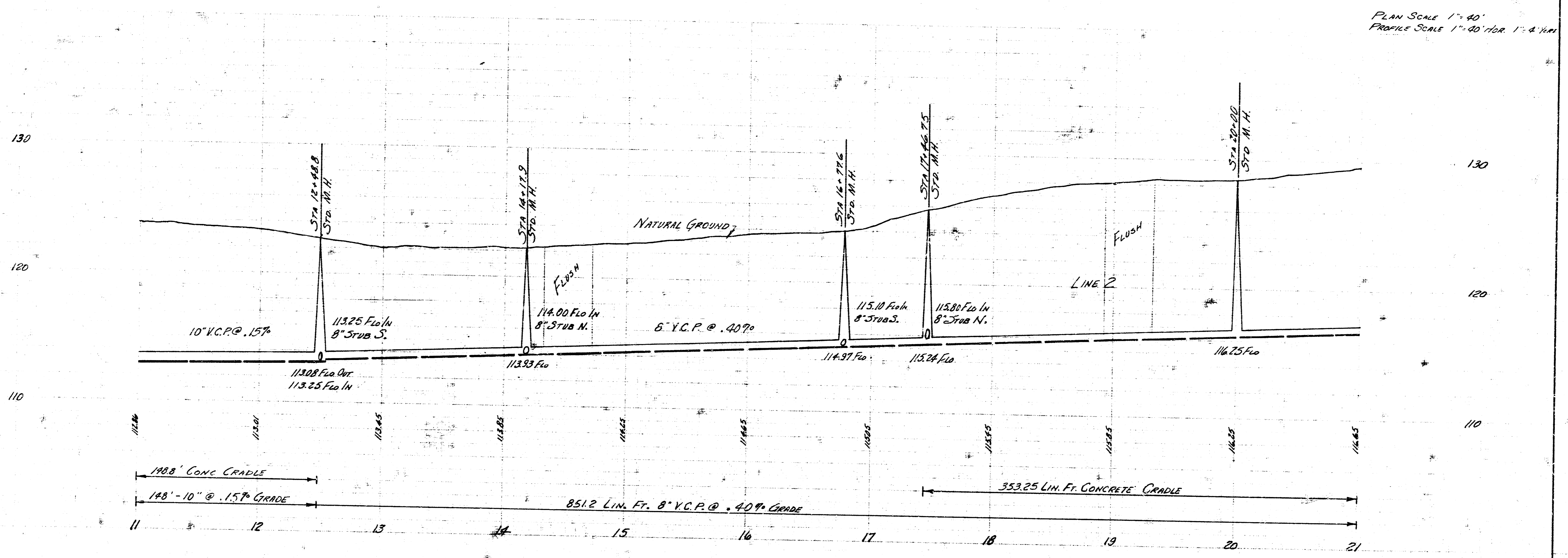
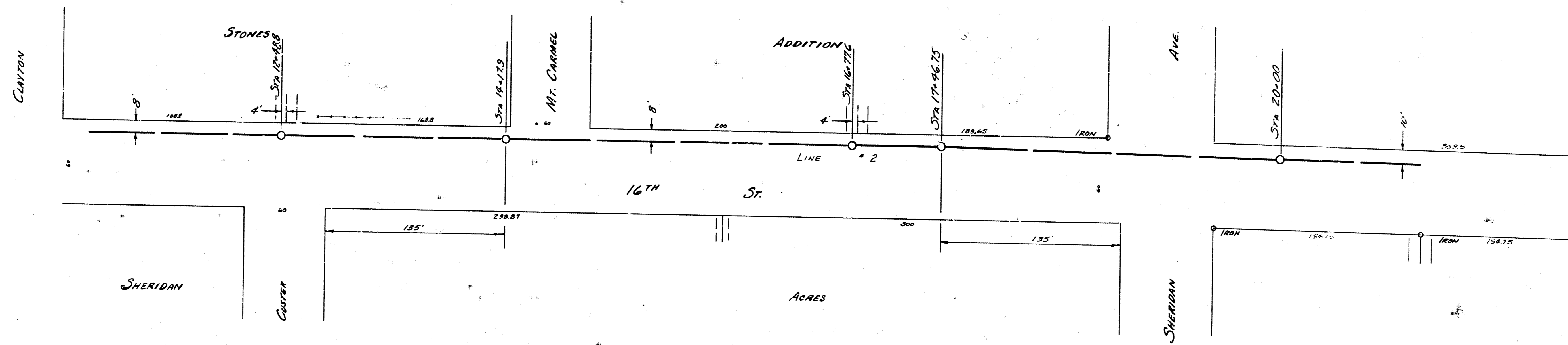
PLAN SCALE 1"=40'
 PROFILE SCALE 1"=8' HOR, 1"=4' VERTICAL

SUBMAIN 10 SAN SEWER 22
 PROJ. NO. C-24-28 SHEET 8 OF 12

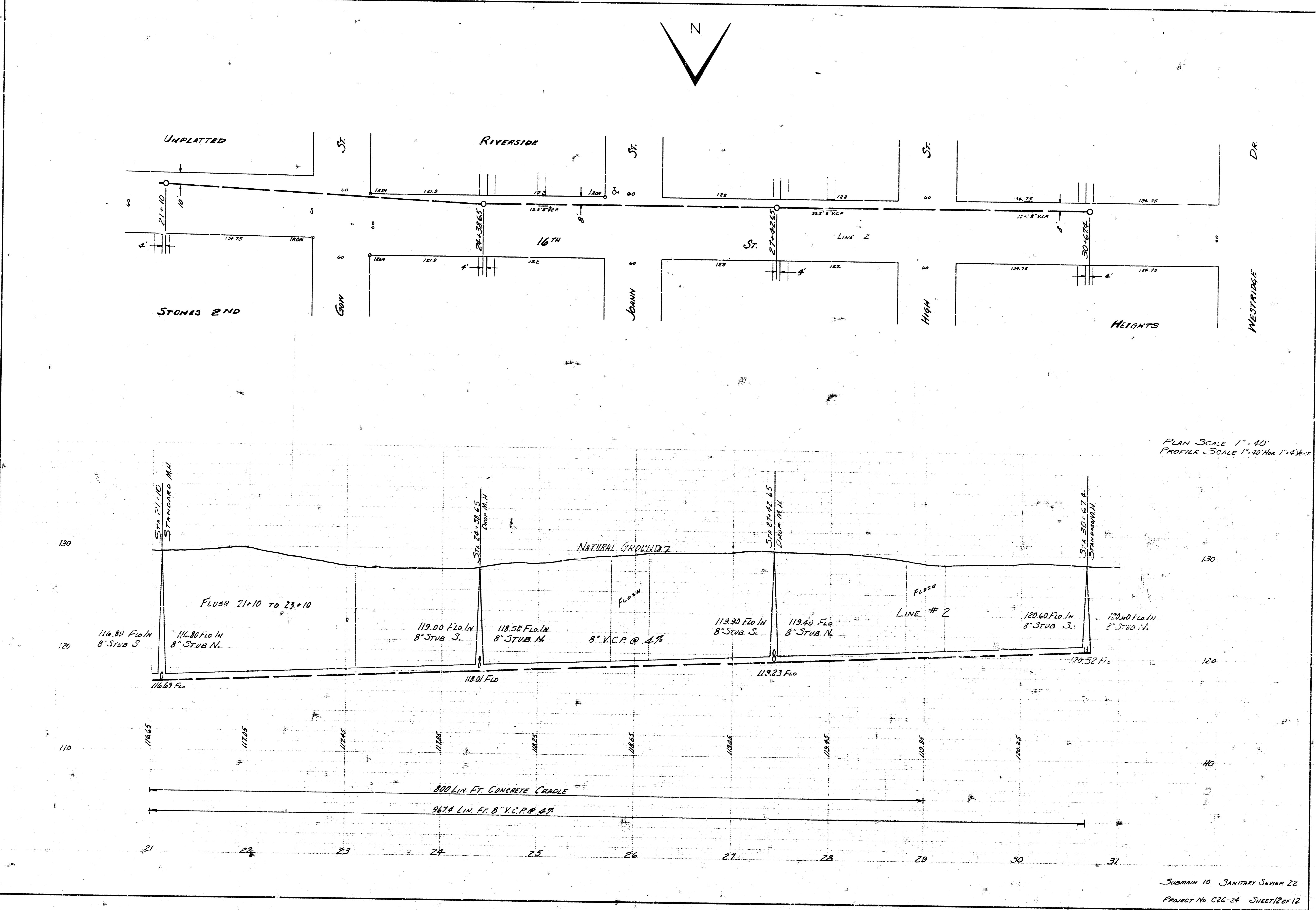


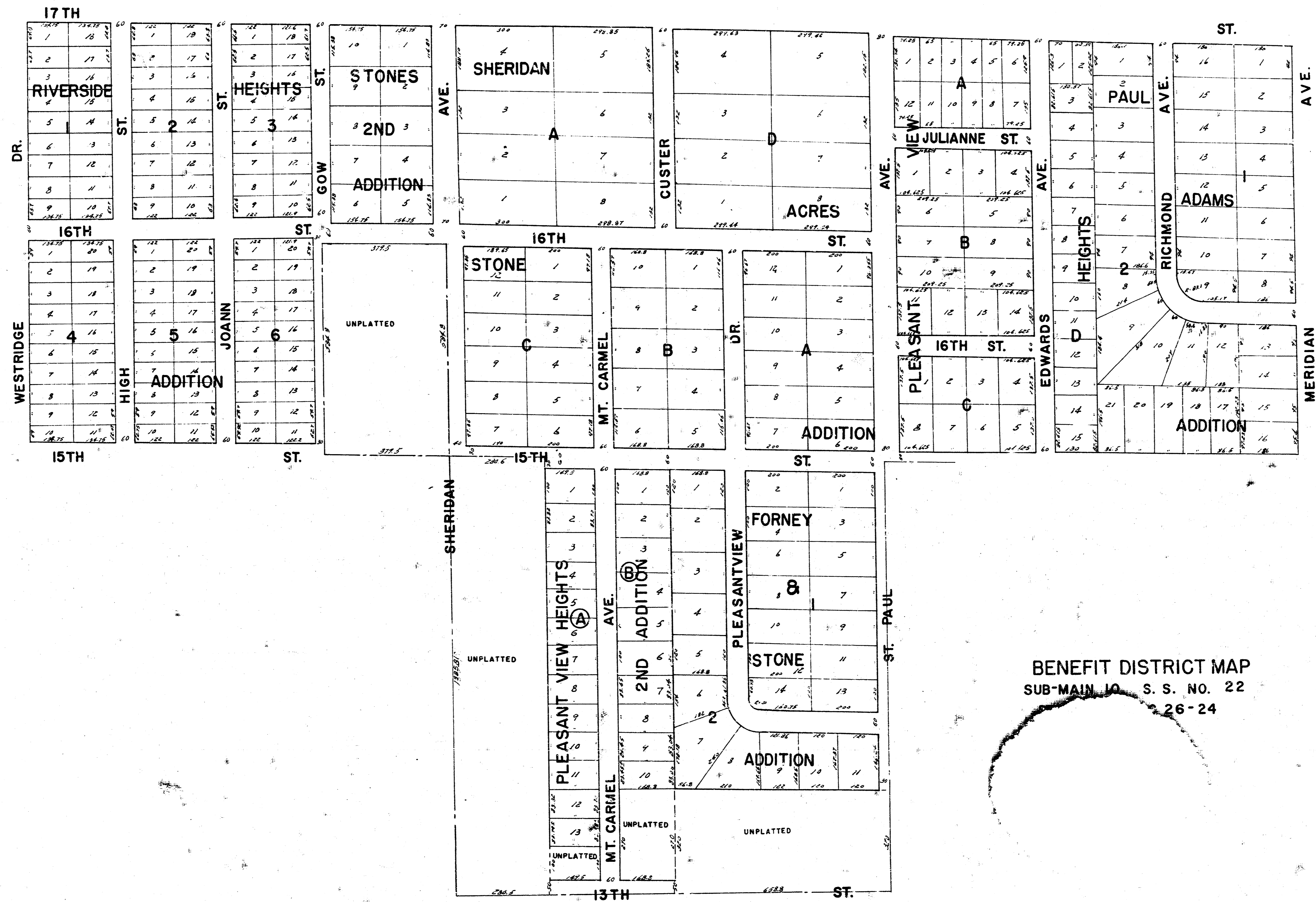
PLAN SCALE 1"=90'
 PROFILE SCALE 1"=10' HORIZ. 1"=9' VERTICAL





PLAN SCALE 1" = 40'
PROFILE SCALE 1" = 40' HOR. 1" = 4' VERT.





BENEFIT DISTRICT MAP
 SUB-MAIN 10 S. S. NO. 22
 26-24