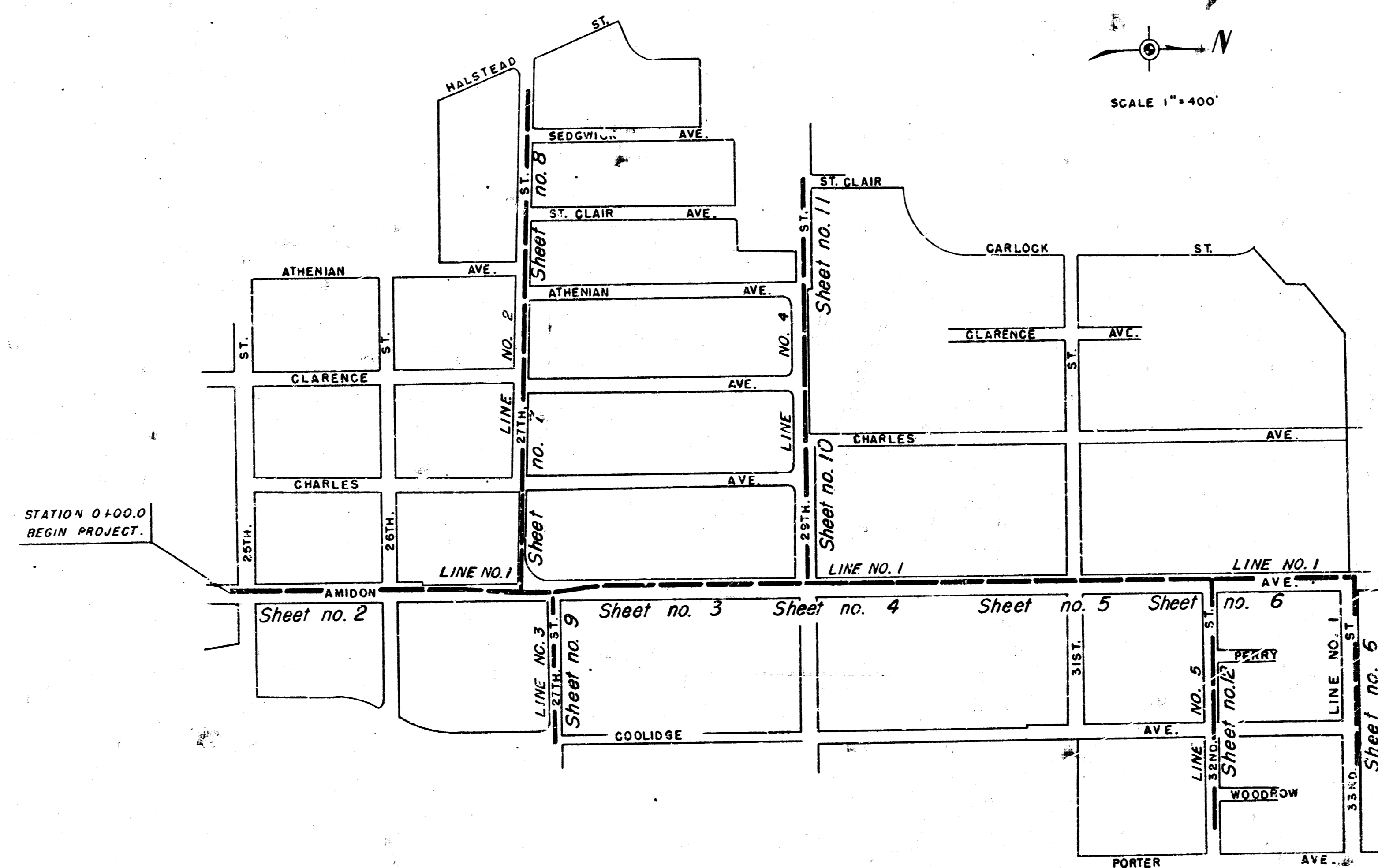


PLAN FOR
 SUBMAIN 17, SANITARY SEWER NO. 22

CITY OF WICHITA, KANSAS

B. E. SMITH CITY ENGINEER

PROJECT NO. C22-27



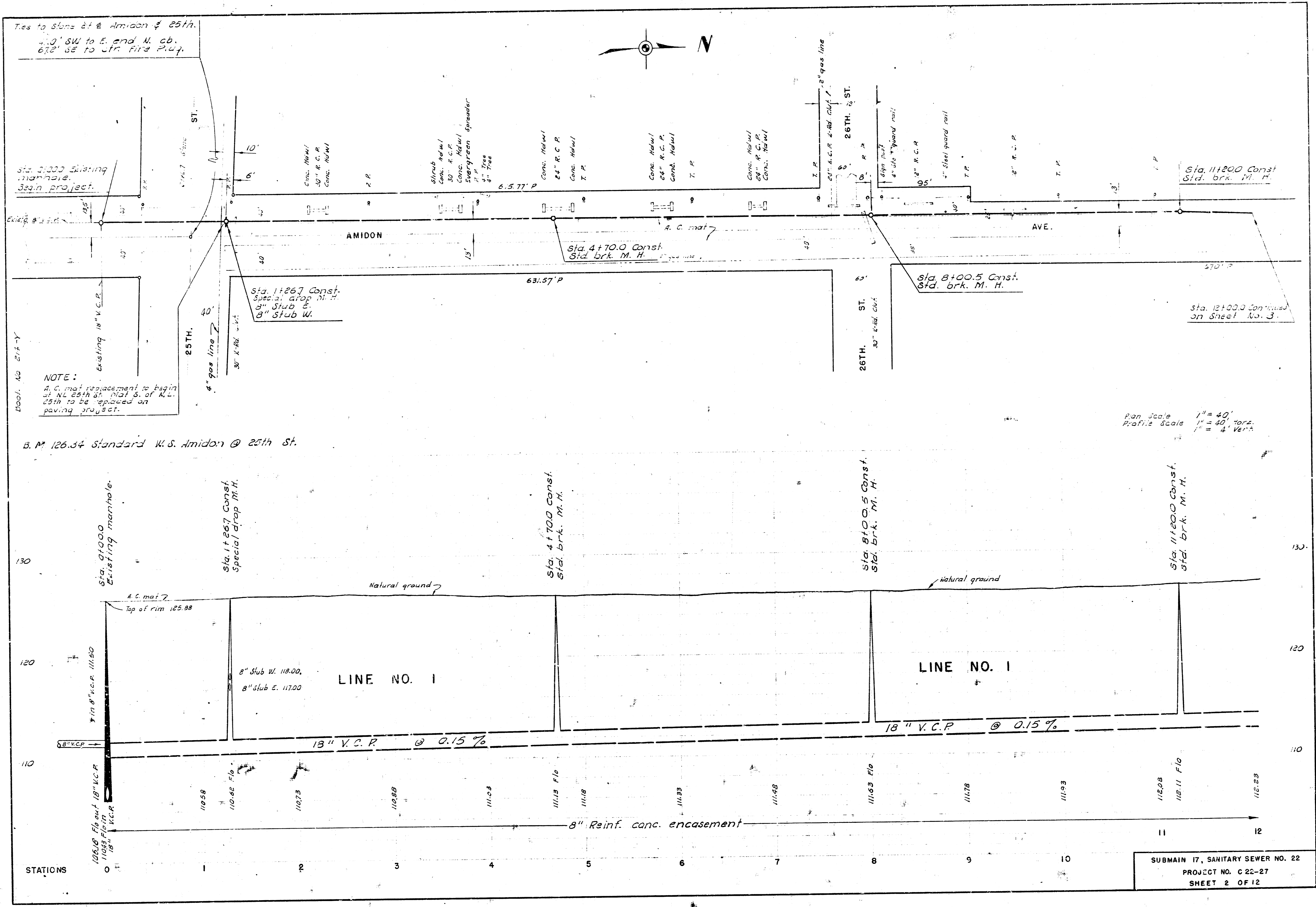
B. E. Smith
 B. E. SMITH CITY ENGINEER, OCT. 10, 1962

NOTE:
 See sheets no. 6 & 9
 for general notes.

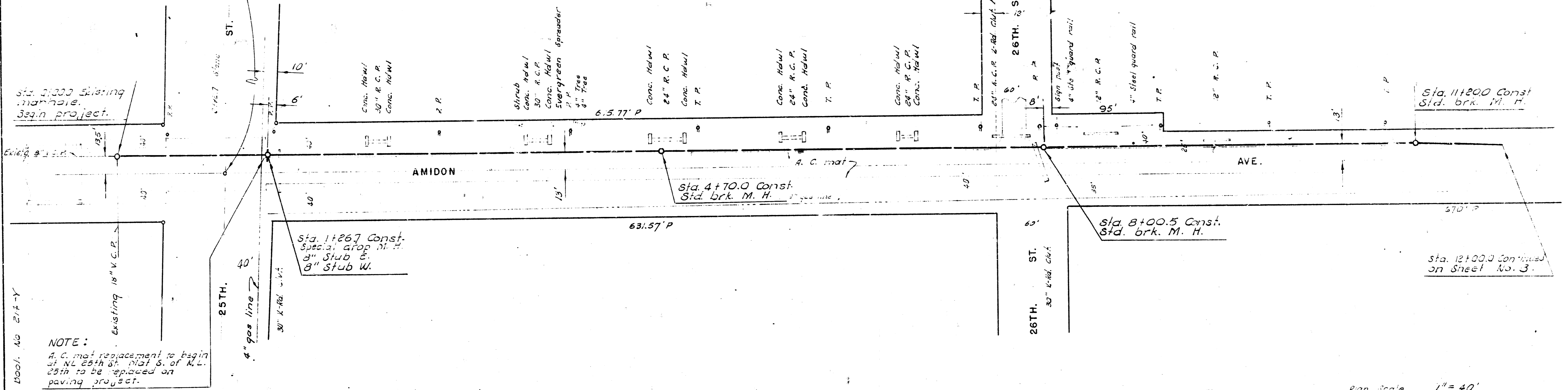
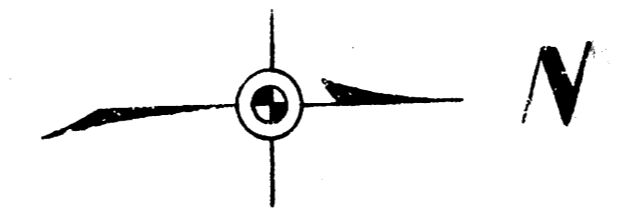
SURVEY BY *J. X.* BOOK NO. 204-Y, 209-Y
 PLAN BY *J. W.* 214-Y, 216-Y
 CHECKED BY *L. J.* DATE: *Oct, 1962*



SUBMAIN 17, SANITARY SEWER NO. 22
 PROJECT NO. C 22-27
 SHEET 1 OF 12



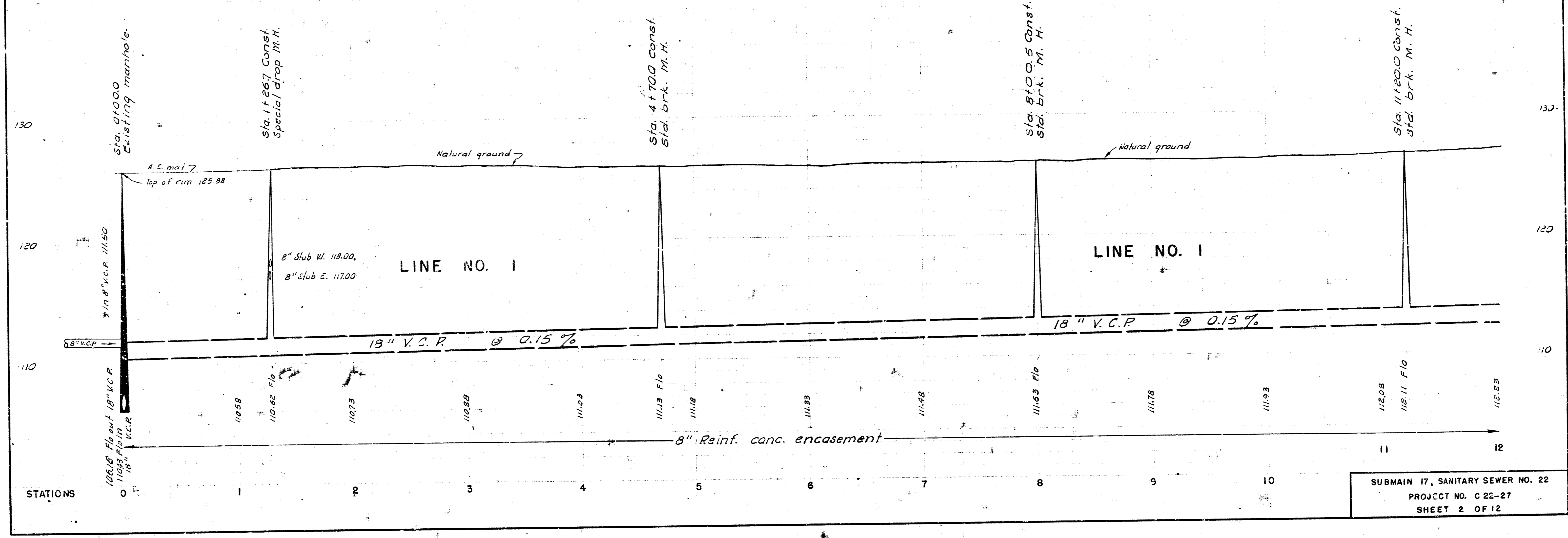
Ties to plans of E. Amidon & 25th.
 10' SW to E. and N. cb.
 672' SE to Tr. Fire P.U.



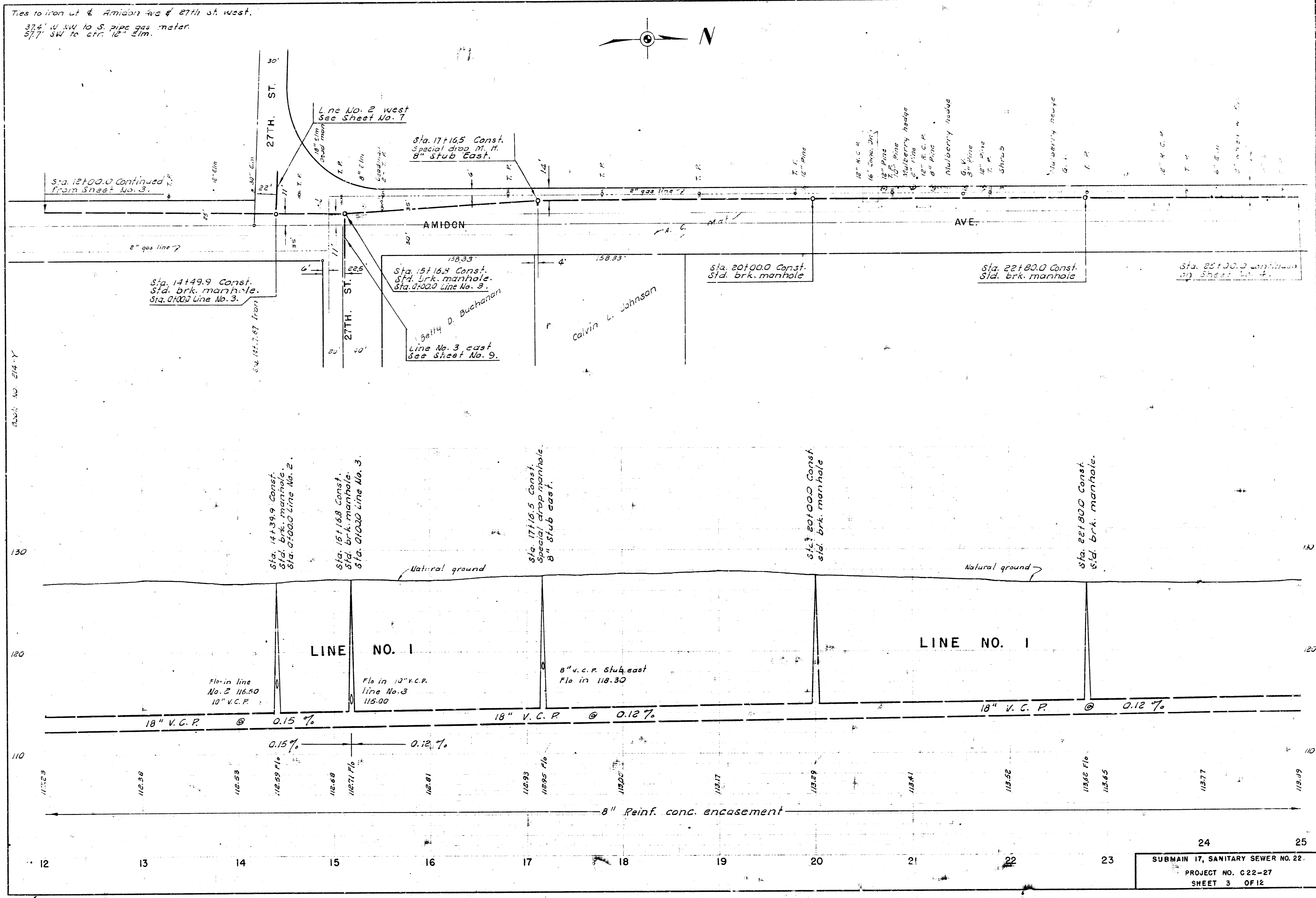
NOTE:
 A.C. mat replacement to begin
 at N.E. 25th St. 100' S. of N.L.
 25th to be replaced on
 paving project.

B.M. 126.34 Standard W.S. Amidon @ 25th St.

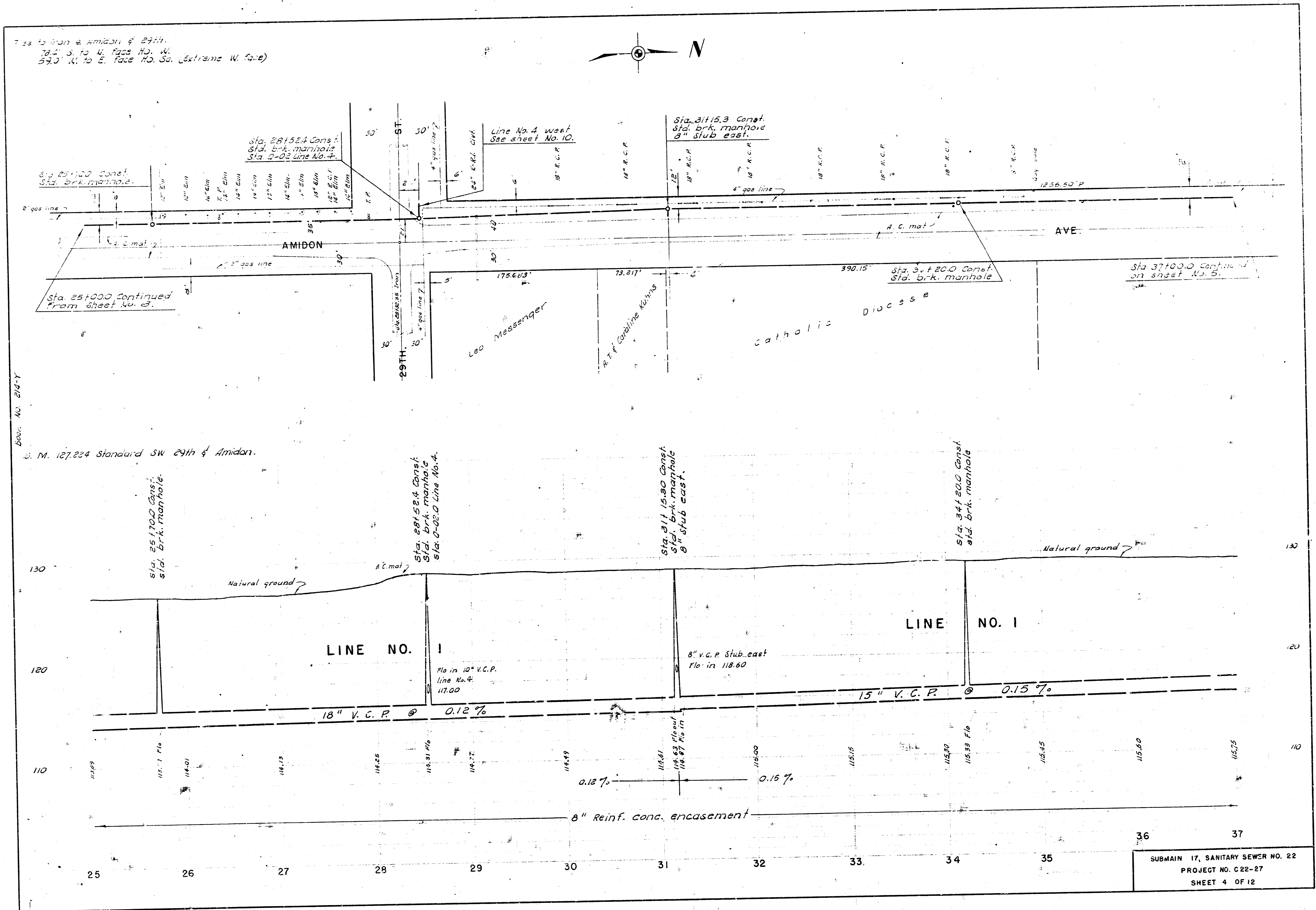
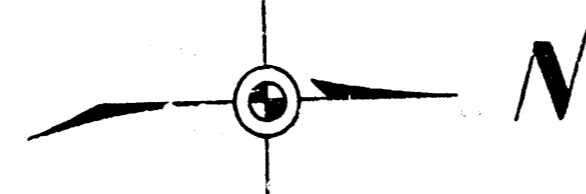
Plan Scale 1" = 40'
 Profile Scale 1" = 40' vert.
 1" = 4' Vert.



SUBMAIN 17, SANITARY SEWER NO. 22
 PROJECT NO. C25-27
 SHEET 2 OF 12

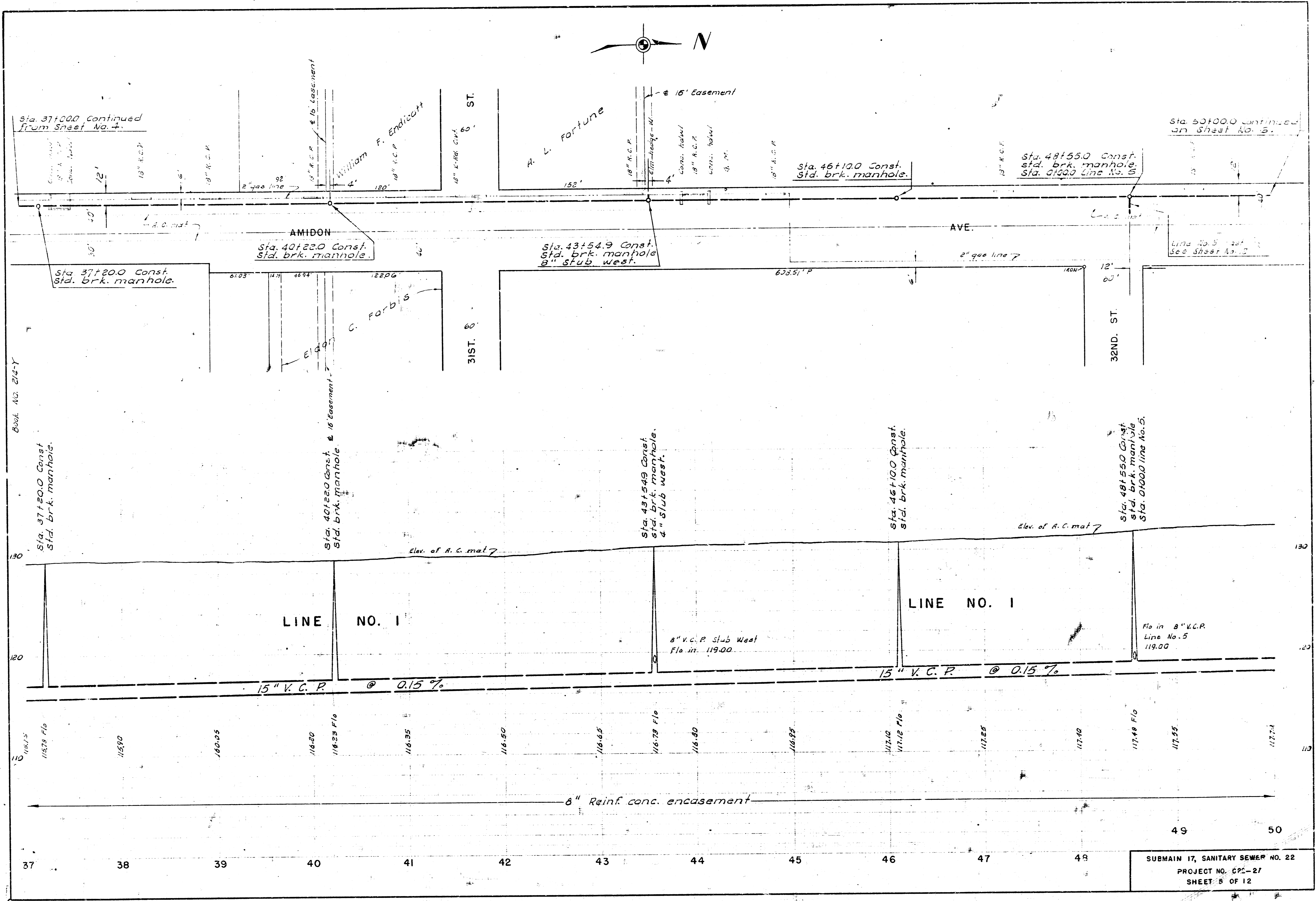
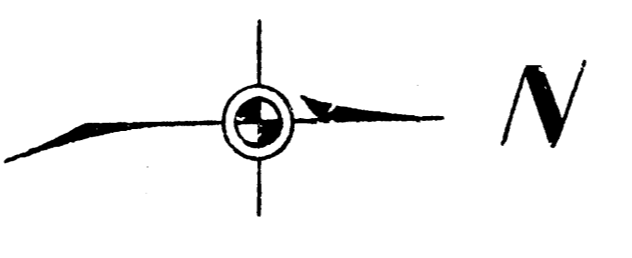


Tras to from a Amidan of 29th.
 74.4' S. to N. Face Ho. W.
 59.0' N. to E. Face Ho. S. (Extreme W. Face)



600' NO 24-Y
 S. M. 127.224 Standard SW 29th of Amidan.

36 37
 SUBMAIN 17, SANITARY SEWER NO. 22
 PROJECT NO. C22-27
 SHEET 4 OF 12



Sta. 37+00.0 Continued
From Sheet No. 4.

Sta. 50+00.0 Continued
on Sheet No. 5.

Sta. 37+20.0 Const.
Std. brk. manhole.

AMIDON
Sta. 40+22.0 Const.
Std. brk. manhole.

Sta. 43+54.9 Const.
Std. brk. manhole
8" stub west.

Sta. 46+10.0 Const.
Std. brk. manhole.

Sta. 49+55.0 Const.
Std. brk. manhole.
Sta. 51+00.0 Line No. 8

Sta. 37+20.0 Const.
Std. brk. manhole.

Sta. 40+22.0 Const.
Std. brk. manhole
& 18" easement.

Sta. 43+54.9 Const.
Std. brk. manhole.
& 8" stub west.

Sta. 46+10.0 Const.
Std. brk. manhole.

Sta. 49+55.0 Const.
Std. brk. manhole.
Sta. 51+00.0 Line No. 5.

LINE NO. 1

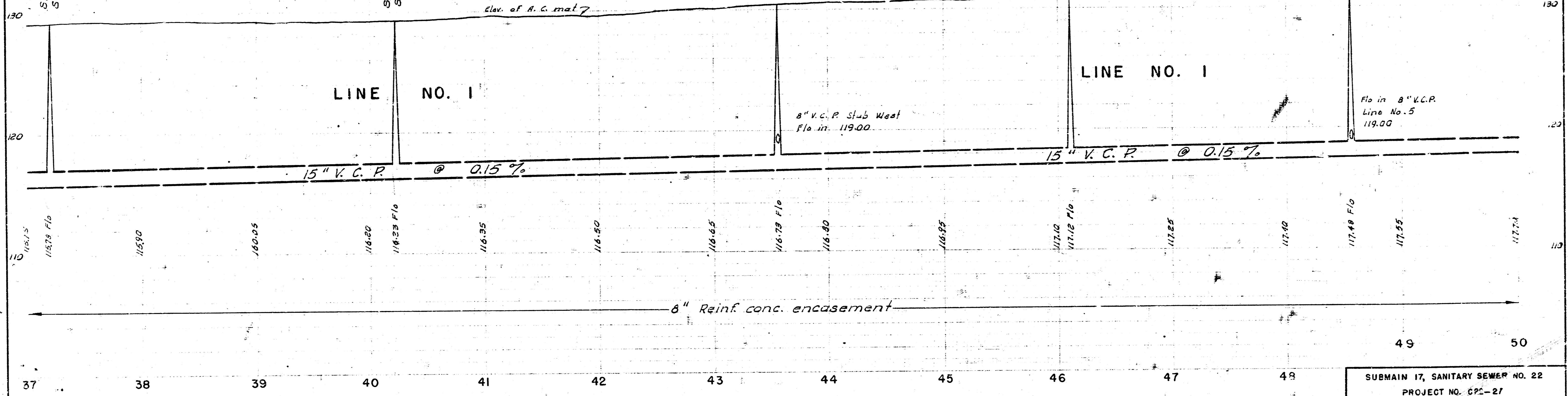
LINE NO. 1

Fls in 8" V.C.P.
Line No. 5
119.00

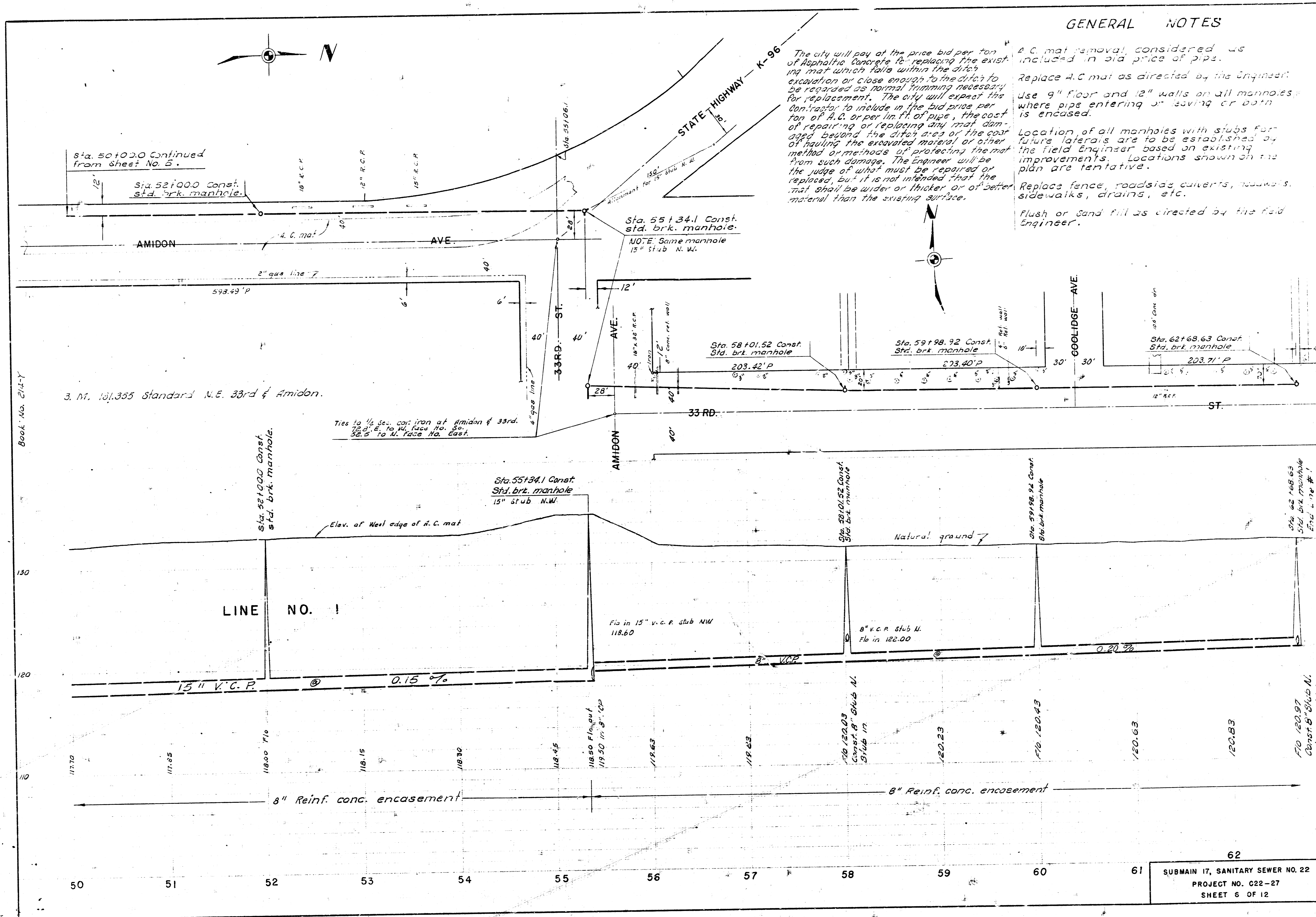
15" V.C.P. @ 0.15%

15" V.C.P. @ 0.15%

6" Reinf. conc. encasement



SUBMAIN 17, SANITARY SEWER NO. 22
PROJECT NO. CP2-27
SHEET 8 OF 12



GENERAL NOTES

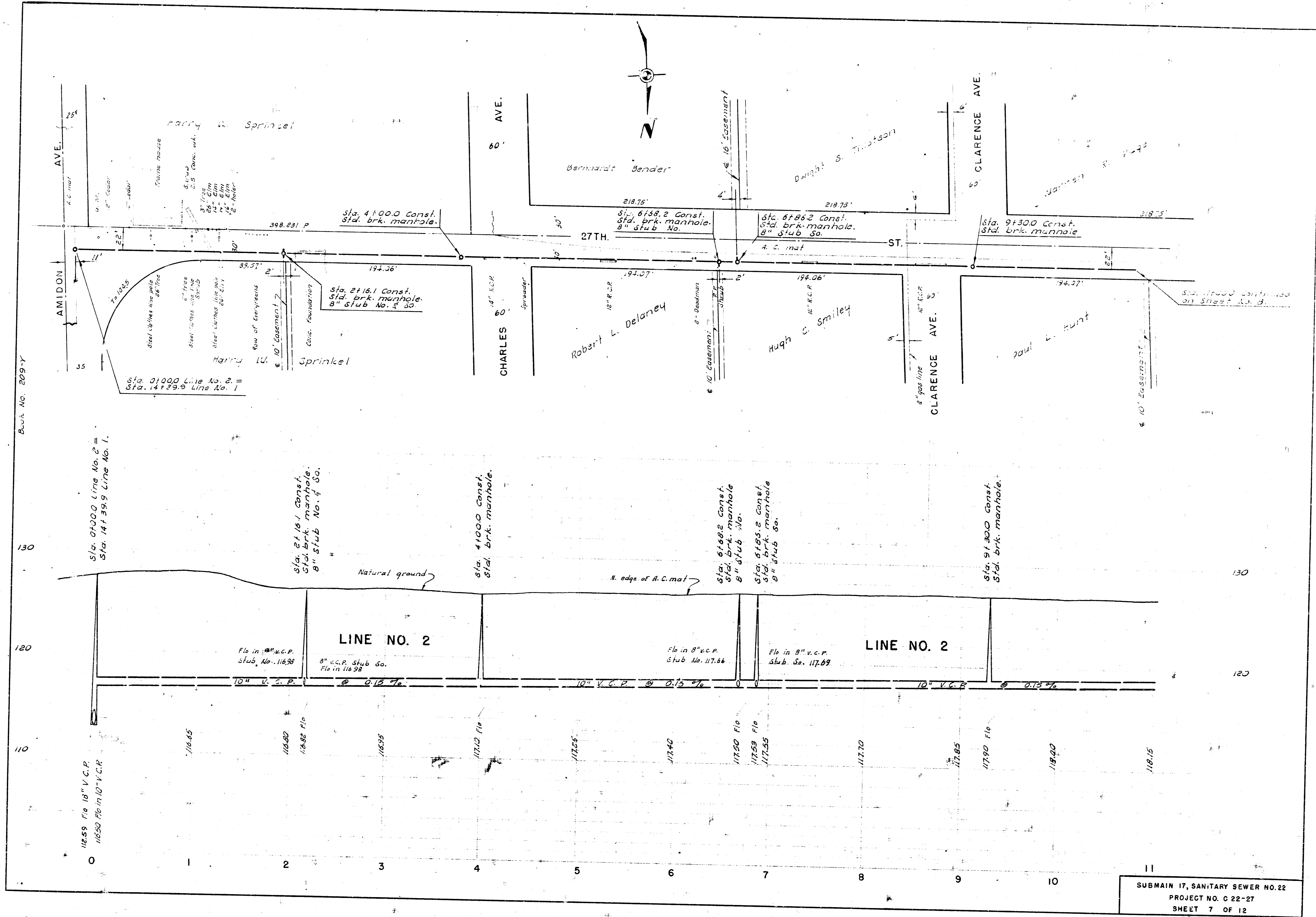
The city will pay at the price bid per ton of Asphaltic Concrete for replacing the existing mat which falls within the ditch excavation or close enough to the ditch to be regarded as normal trimming necessary for replacement. The city will expect the contractor to include in the bid price per ton of A.C. or per lin ft of pipe, the cost of repairing or replacing any mat damaged beyond the ditch area or the cost of hauling the excavated material or other method or methods of protecting the mat from such damage. The Engineer will be the judge of what must be repaired or replaced, but it is not intended that the mat shall be wider or thicker or of better material than the existing surface.

A.C. mat removal, considered as included in bid price of pipe.
 Replace A.C. mat as directed by the Engineer.
 Use 9" floor and 12" walls on all manholes where pipe entering or leaving or both is encased.
 Location of all manholes with stubs for future laterals are to be established by the Field Engineer based on existing improvements. Locations shown on this plan are tentative.
 Replace fence, roadside culverts, sidewalks, sidewalks, drains, etc.
 Flush or Sand fill as directed by the field Engineer.

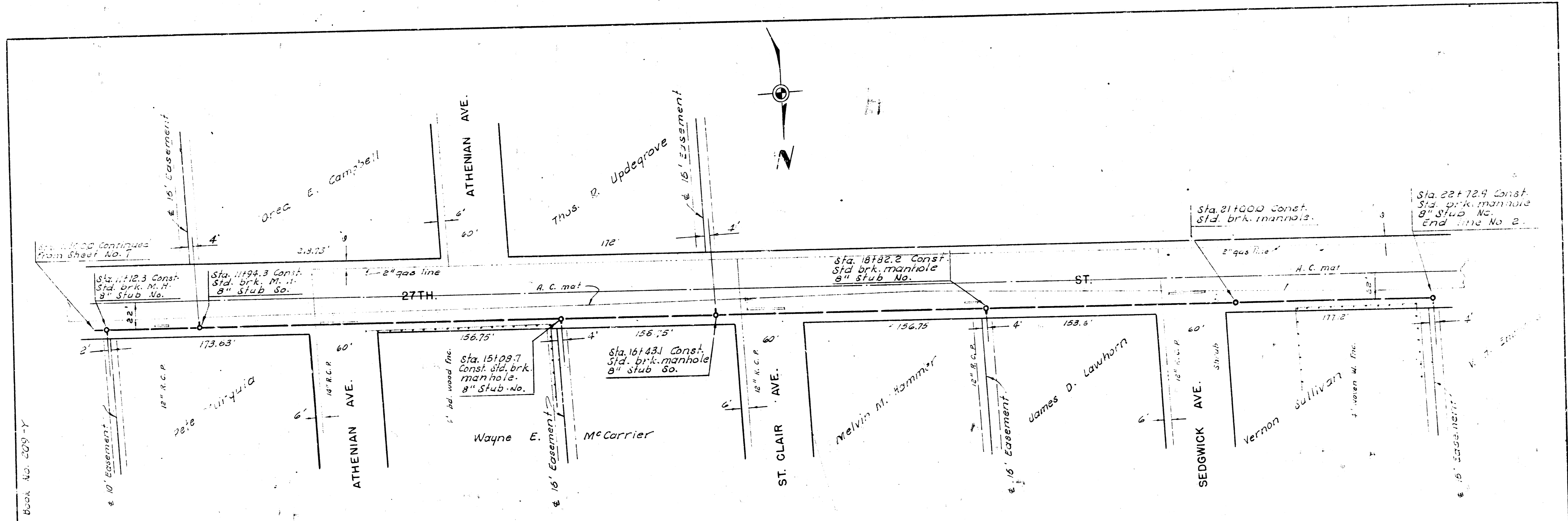
Book No. 214-Y

3. N. 131.355 Standard N.E. 33rd & Amidon.

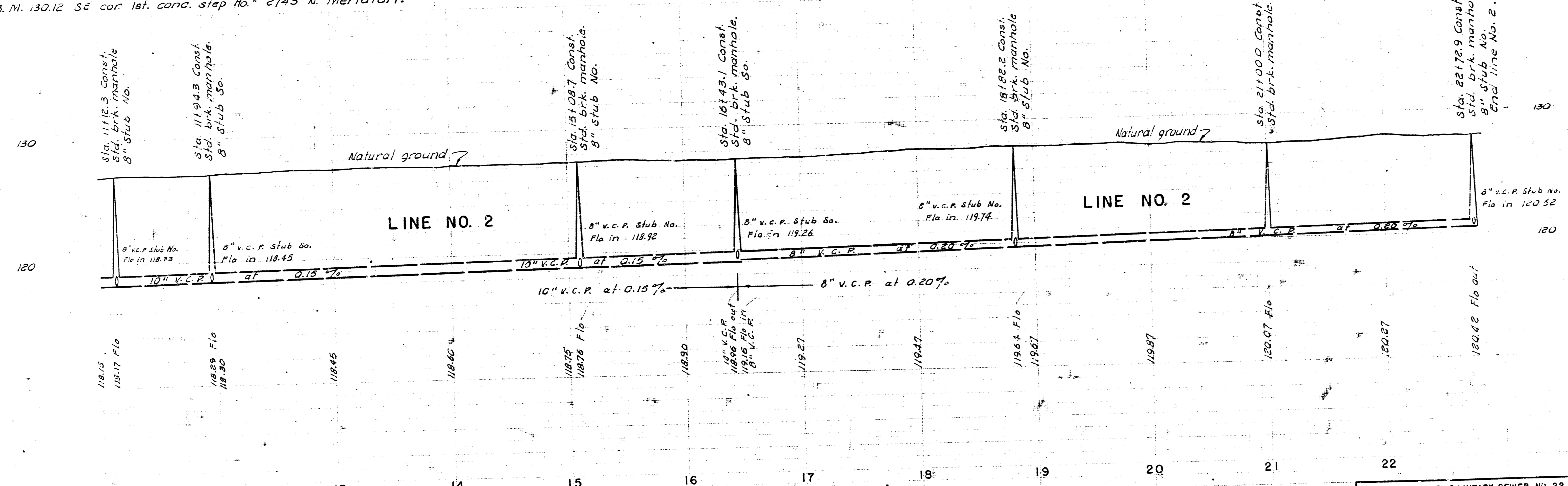
Ties to 1/4 Sec. cont. iron at Amidon & 33rd. 129.0' E. to W. Face No. 51, 52.5' to N. Face No. East.

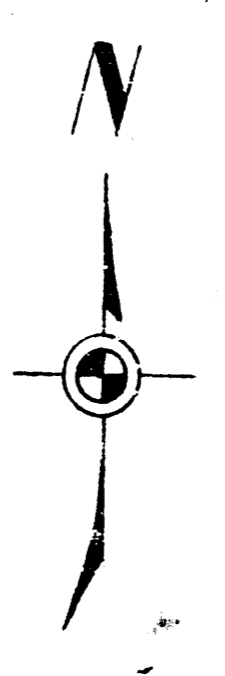
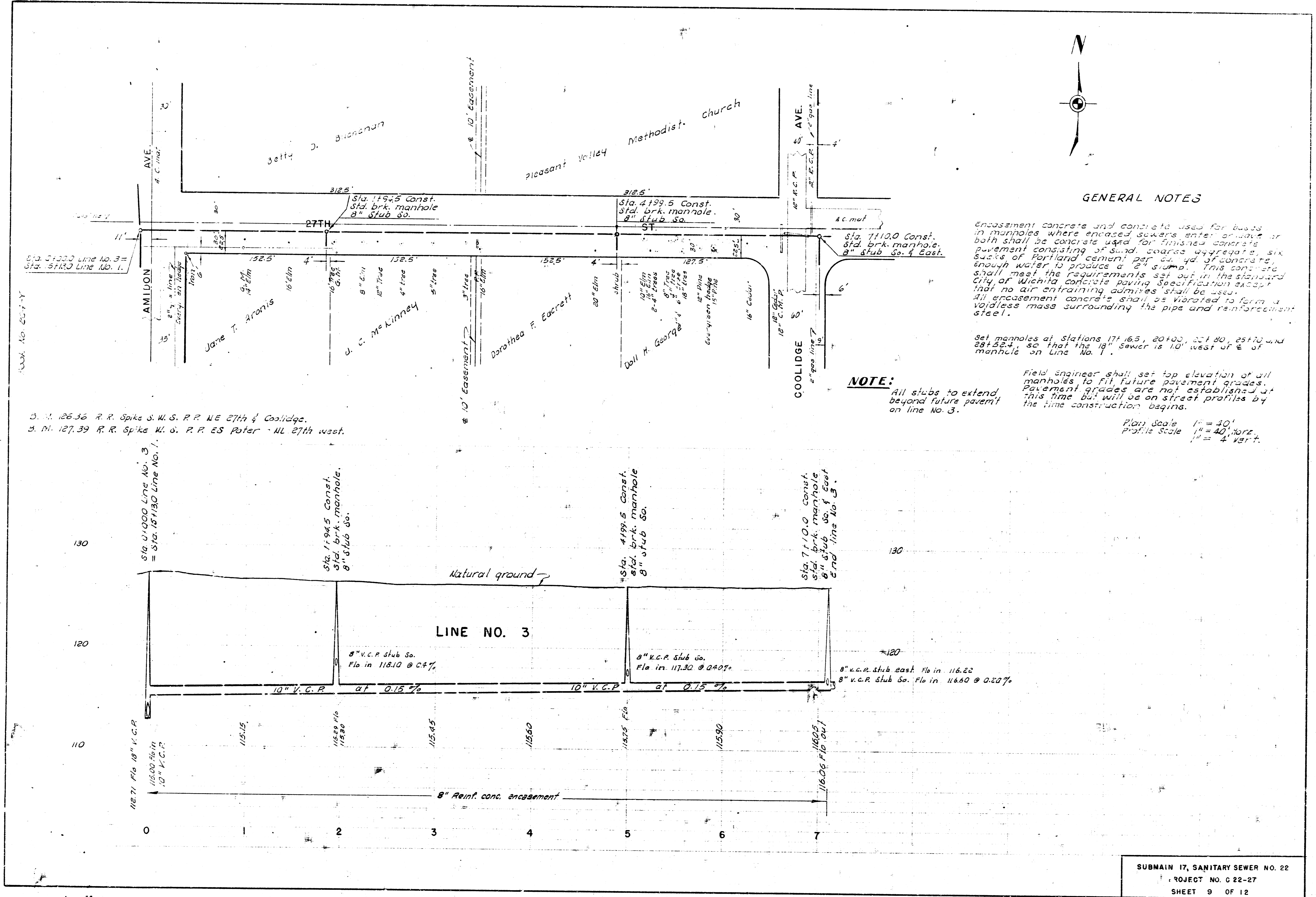


SUBMAIN 17, SANITARY SEWER NO. 22
 PROJECT NO. C 22-27
 SHEET 7 OF 12



S.M. 126.91 Step bench S. S. R. P. S. S. 27th - 40' w. of Athenian.
 B.M. 130.12 SE cor 1st. conc. step No. 2743 N. Meridian.





GENERAL NOTES

Encasement concrete and concrete used for bases in manholes where encased sewers enter or leave or both shall be concrete used for finished concrete pavement consisting of sand, coarse aggregate, six sacks of Portland cement per cu. yd. of concrete, enough water to produce a 2" slump. This concrete shall meet the requirements set out in the standard City of Wichita concrete paving Specification except that no air entraining admixes shall be used. All encasement concrete shall be vibrated to form a voidless mass surrounding the pipe and reinforcement steel.

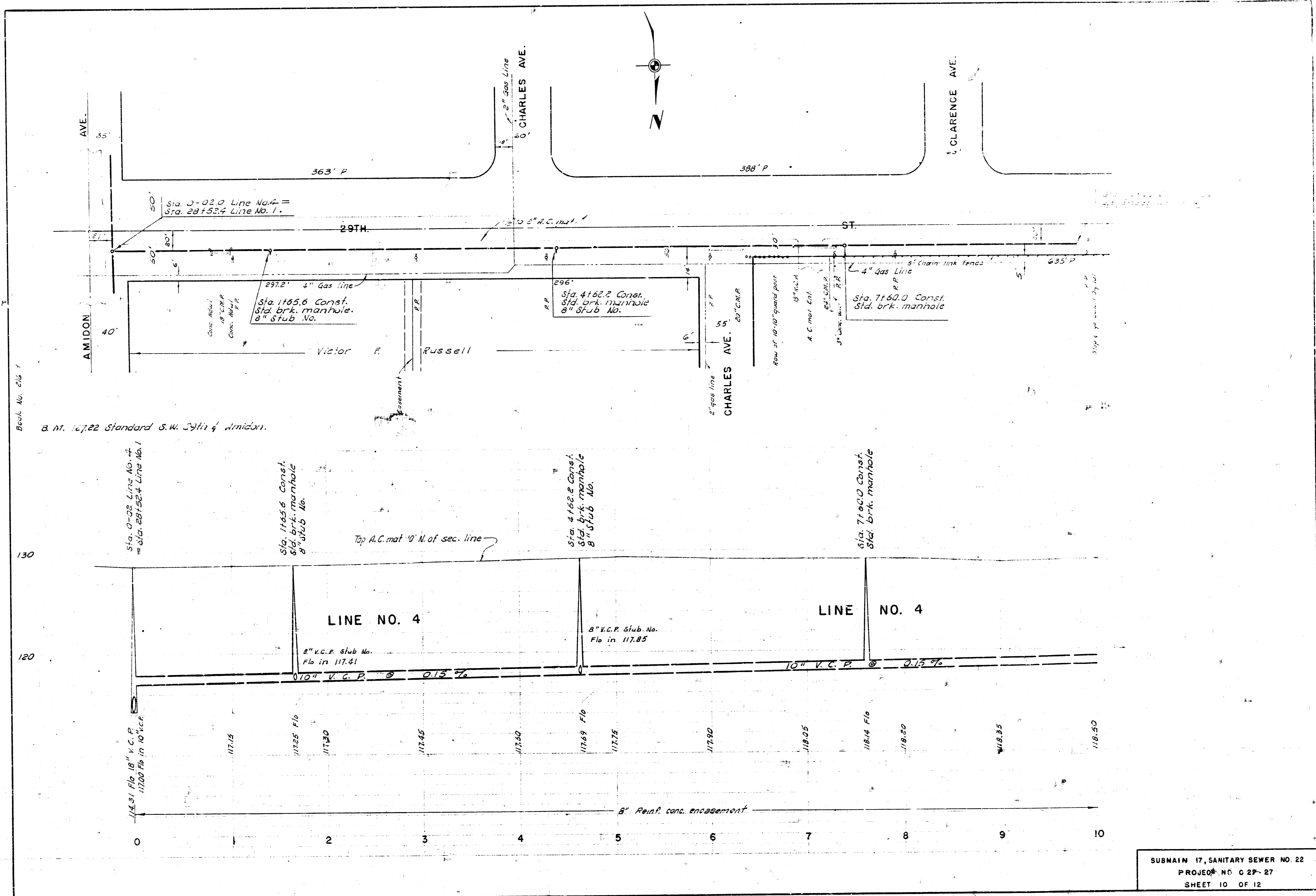
Set manholes at stations 1716.5, 20400, 22180, 25110 and 28124, so that the 18" sewer is 10' west of E of manhole on Line No. 1.

NOTE:
All stubs to extend beyond future pavement on line No. 3.

Field engineer shall set top elevation of all manholes to fit future pavement grades. Pavement grades are not established at this time but will be on street profiles by the time construction begins.

Plan Scale 1" = 40'
Profile Scale 1" = 40' vert.

3. M. 126.36 R.R. Spike S. W. S. P.P. NE 27th & Coolidge.
3. M. 127.39 R.R. Spike N. S. P.P. ES Peter - NW 27th west.



Book No. 214

B. N. 12722 Standard S.W. City of Amidon.

130

120

114.31 Flo in 10' V.C.P.
 1170.0 Flo in 10' V.C.P.
 1171.5
 1172.5 Flo
 1173.0
 1174.5
 1175.0
 1176.9 Flo
 1177.5
 1179.0
 1180.5
 1181.4 Flo
 1182.0
 1183.5
 1185.0

SUBMAIN 17, SANITARY SEWER NO. 22
 PROJECT NO. C 2P-27
 SHEET 10 OF 12

