

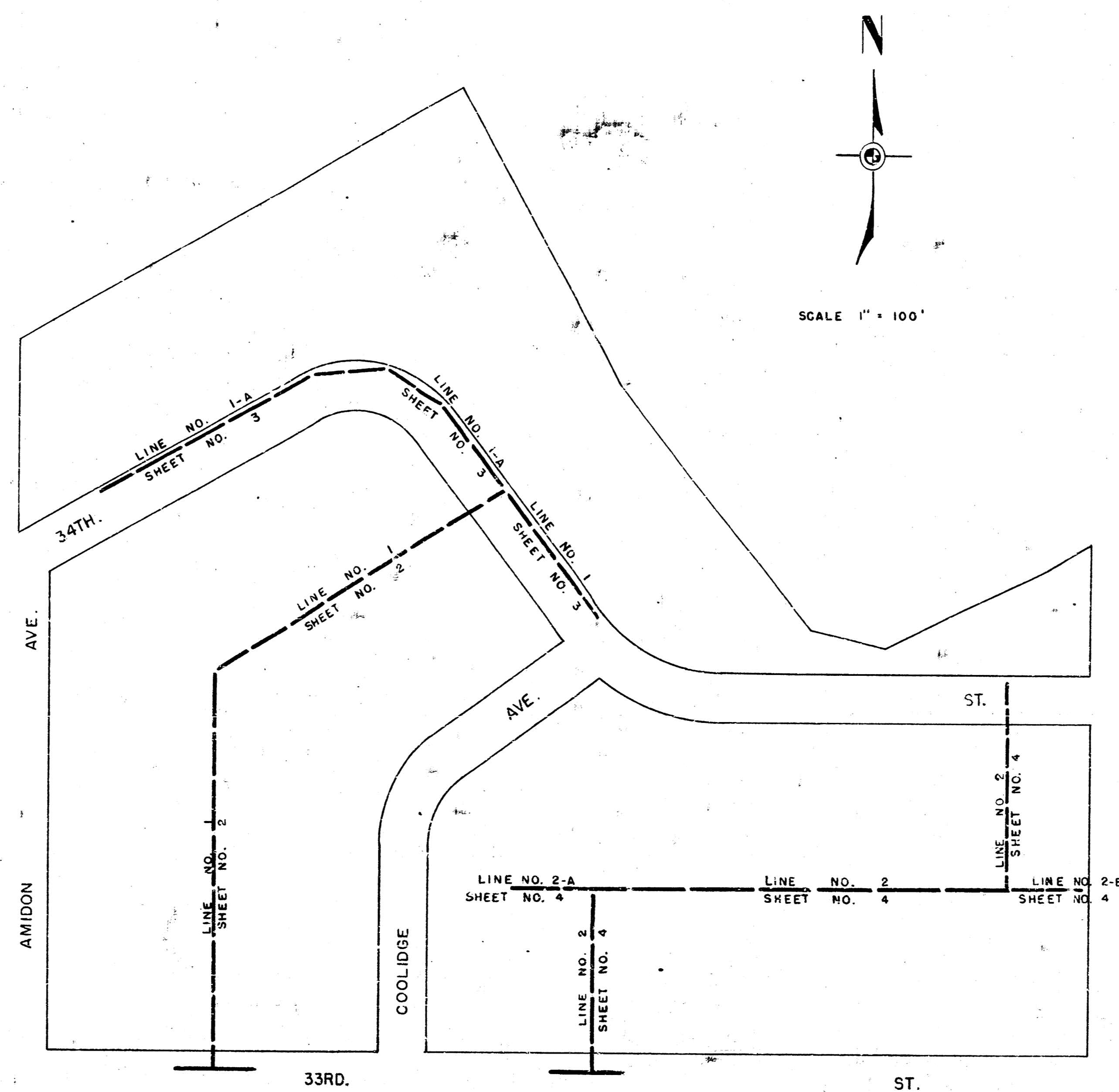
PLAN FOR

LAT. 2, SUBMAIN 17, SANITARY SEWER NO. 22

CITY OF WICHITA, KANSAS

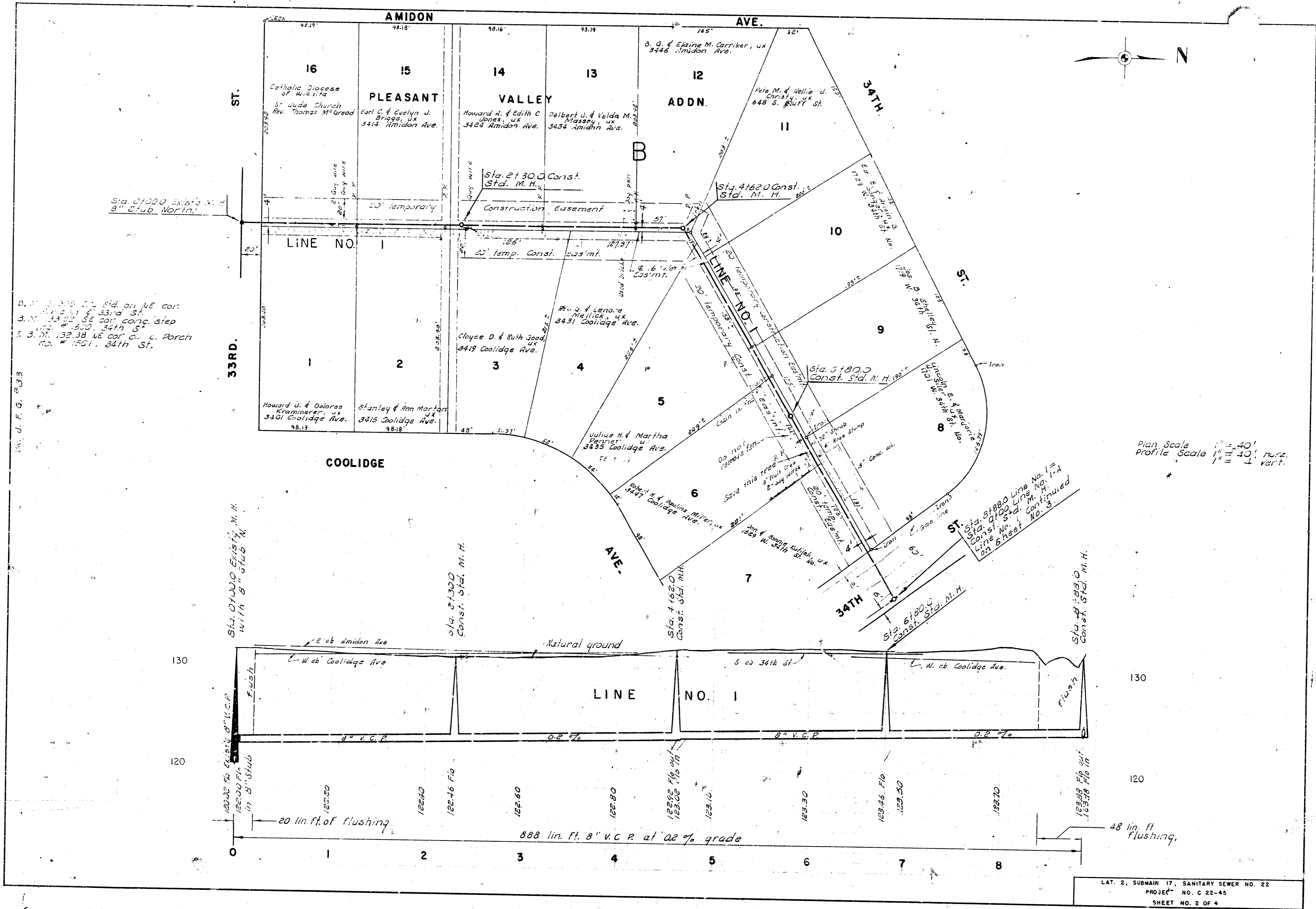
B. E. SMITH CITY ENGINEER

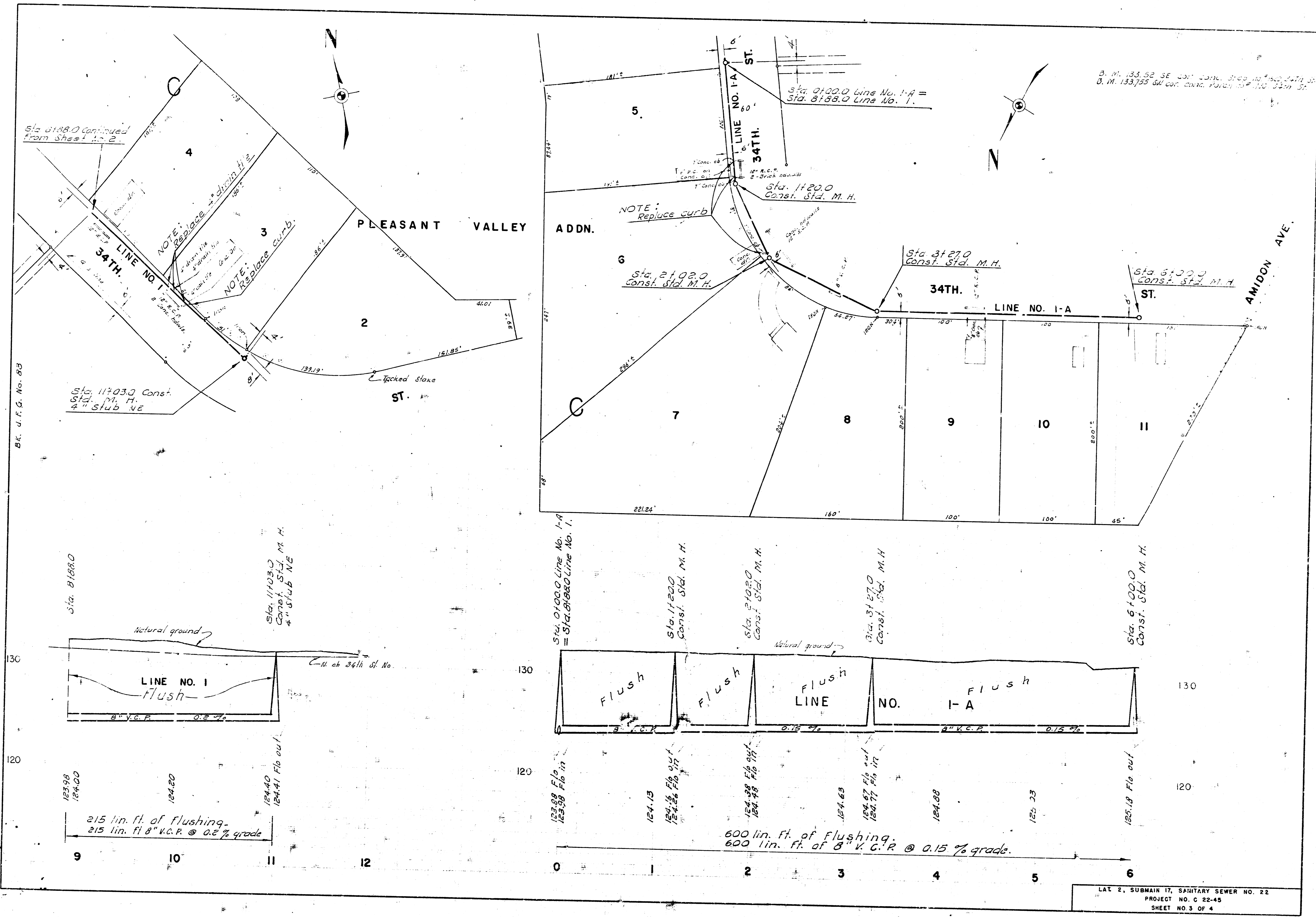
PROJECT NO. C22-45



SURVEY BY J.F.G. BOOK NO. JFG 83
 PLAN BY J.H.G. JFG 85
 CHECKED BY [Signature] DATE: Aug. 1963

LAT. 2, SUBMAIN 17, SANITARY SEWER NO. 22
 PROJECT NO. C 22-45
 SHEET NO. 1 OF 4

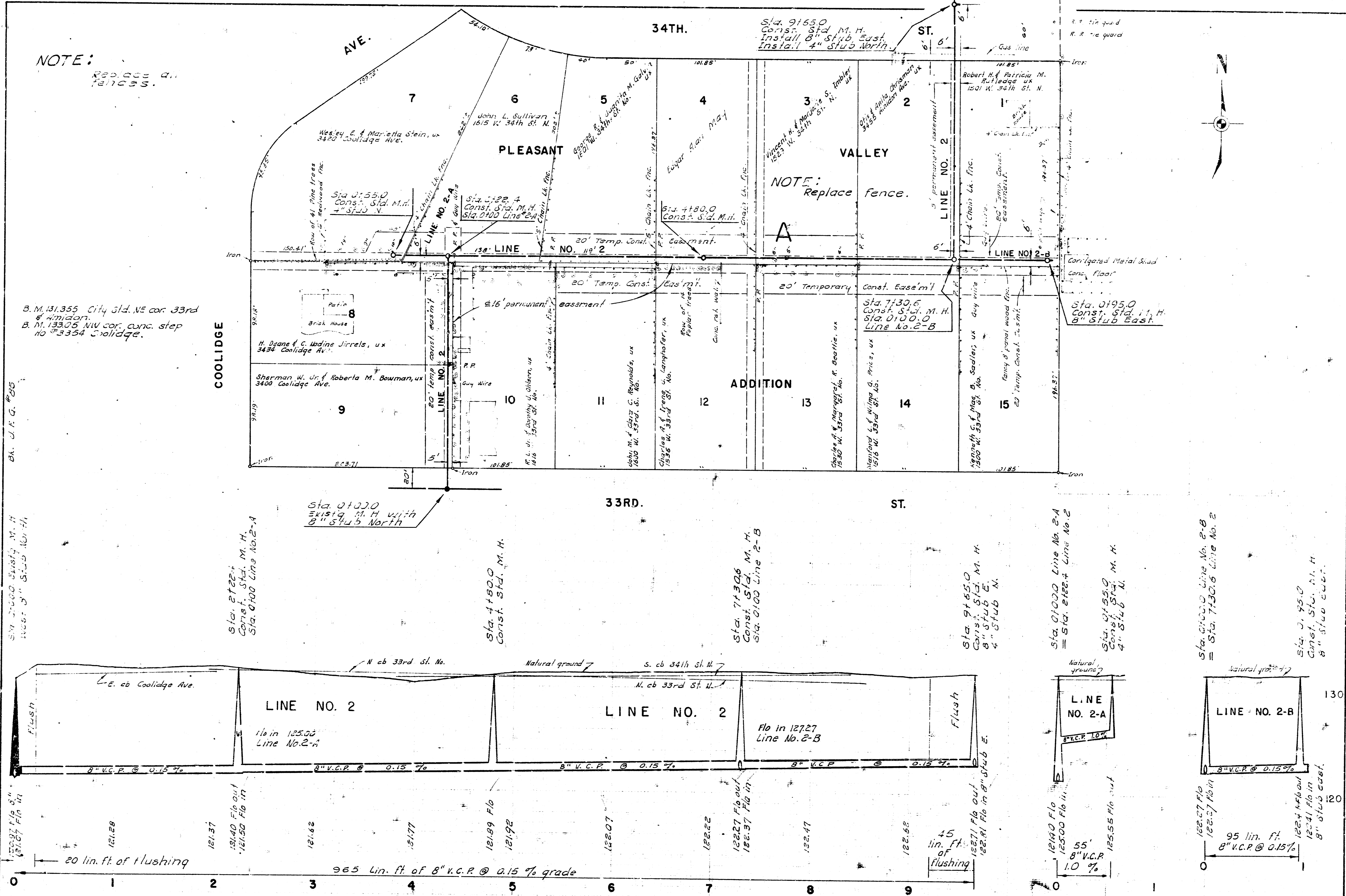




B. M. 133.52 SE COR. 24th St. & Pleasant Valley St.
 B. M. 133.755 SW COR. 24th St. & Pleasant Valley St.

B.K. U.F.G. No. 83

NOTE:
REVISIONS
DATE



B.M. 131,355 City G.I. NE cor. 33rd
& Addition.
B.M. 133,005 N.W. cor. conc. step
no. 13334 Coolidge.

Sta. 1200.0
Const. Sta. M.H.
8" stub North

Sta. 2722.4
Const. Sta. M.H.
Sta. 0100 Line No. 2-A

Sta. 4180.0
Const. Sta. M.H.

Sta. 7130.6
Const. Sta. M.H.
Sta. 0100 Line No. 2-B

Sta. 9165.0
Const. Sta. M.H.
8" stub East
4" stub North

Sta. 0100.0 Line No. 2-A
Sta. 2122.4 Line No. 2

Sta. 2155.0
Const. Sta. M.H.
4" stub N.

Sta. 0100.0 Line No. 2-B
Sta. 7130.6 Line No. 2

Sta. 1227.7
Const. Sta. M.H.
8" stub East

