

LATERAL 74, MAIN 17, SANITARY SEWER NO. 22

PROJ. NO. 468-82917

INDEX NO. 743757

CITY OF WICHITA, KANSAS

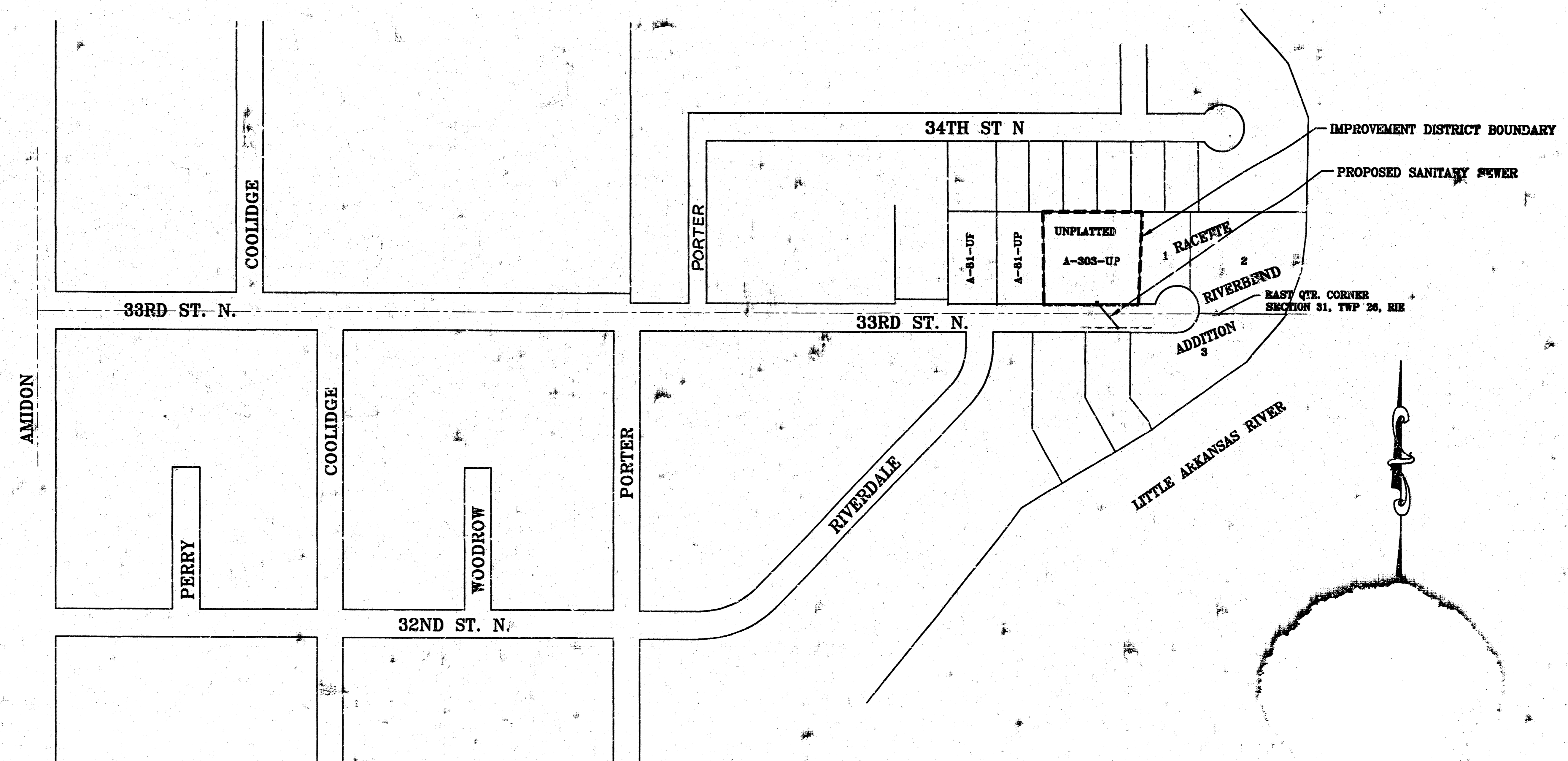
M. E. LINDEBAK - CITY ENGINEER

GENERAL NOTES:

1. ALL CONSTRUCTION AND MATERIAL TO COMPLY WITH CITY OF WICHITA SPECIFICATIONS AND STANDARDS.
2. THE CONTRACTOR SHALL NOTIFY THE UTILITY SERVICE COMPANIES TO FLAG THEIR UNDERGROUND LINES AND REQUEST ANY OVERHEAD POLE/LINE ADJUSTMENTS 48 HOURS PRIOR TO CONSTRUCTION.
KANSAS ONE-CALL 1-800-344-7233
3. THE UNDERGROUND UTILITY SERVICE LINES AND OVERHEAD UTILITY POLE LINES ARE TO BE ADJUSTED AS NECESSARY BY OTHERS PRIOR TO CONSTRUCTION UNLESS THE PLANS SPECIFICALLY CALL FOR THEIR ADJUSTMENT BY THE CONTRACTOR. EXISTING UTILITIES AND THEIR LOCATION, AS SHOWN ON THE PLANS, REPRESENT THE BEST INFORMATION OBTAINABLE FOR DESIGN. LOCATION INFORMATION HAS BEEN OBTAINED FROM THE VARIOUS UTILITY COMPANIES AND IS EITHER FROM COMPANY RECORD DRAWINGS OR COMPANY PROVIDED FIELD LOCATIONS. THE CONTRACTOR WILL BE REQUIRED TO WORK AROUND EXISTING UTILITIES WITHIN THE RIGHT-OF-WAY WHICH DO NOT CONFLICT WITH PROPOSED CONSTRUCTION.
4. THE CONTRACTOR SHALL GIVE ALL PROPERTY OWNERS AND/OR TENANTS DIRECTLY AFFECTED BY THE CONSTRUCTION OF THIS PROJECT A MINIMUM OF FIVE (5) DAYS ADVANCE WRITTEN NOTICE PRIOR TO START OF CONSTRUCTION.
5. ANY TREE OR SHRUB REMOVAL MUST BE APPROVED BY THE FIELD ENGINEER.
6. THE CONTRACTOR SHOULD EXAMINE THE CONSTRUCTION SITE PRIOR TO BIDDING AND BE SATISFIED AS TO THE WORK SHOWN FOR COMPLETION.
7. ANY FENCE REMOVED DURING CONSTRUCTION MUST BE REPLACED AND RESTORED TO ORIGINAL CONDITION.
8. UTILITY EASEMENT AND FENCE RESTORATION SHALL BE SUSPENDED FOR THREE WEEKS FROM THE DATE THE SEWER IS TESTED AND ACCEPTED BY THE ENGINEERING DIVISION, DEPARTMENT OF PUBLIC WORKS, TO ALLOW PROPERTY OWNERS TIME TO INSTALL HOOKUPS TO THE SEWER MAIN. CONTRACTORS SHALL NOTIFY PROPERTY OWNERS, IN WRITING, OF THIS AGREEMENT.

INDEX OF SHEETS

SHEET 1 - TITLE SHEET
SHEET 2 - PLAN/PROFILE



UNPLATTED
A-303-UP

(Bonnie Haynes
1120 W. 33rd St. N.)

BM. X-CUT ON TOP CURB ON SOUTH SIDE 33RD ST. NO.
72' WEST OF CENTER OF CUL-DE-SAC
ELEV. = 127.88

SCALE PLAN 1" = 20'
PROFILE 1" = 20' HORIZ.
1" = 5' VERT.

STA 0+72.59 CONST. STD CLEANOUT
RISER ASSEMBLY WITH DOUBLE WYE

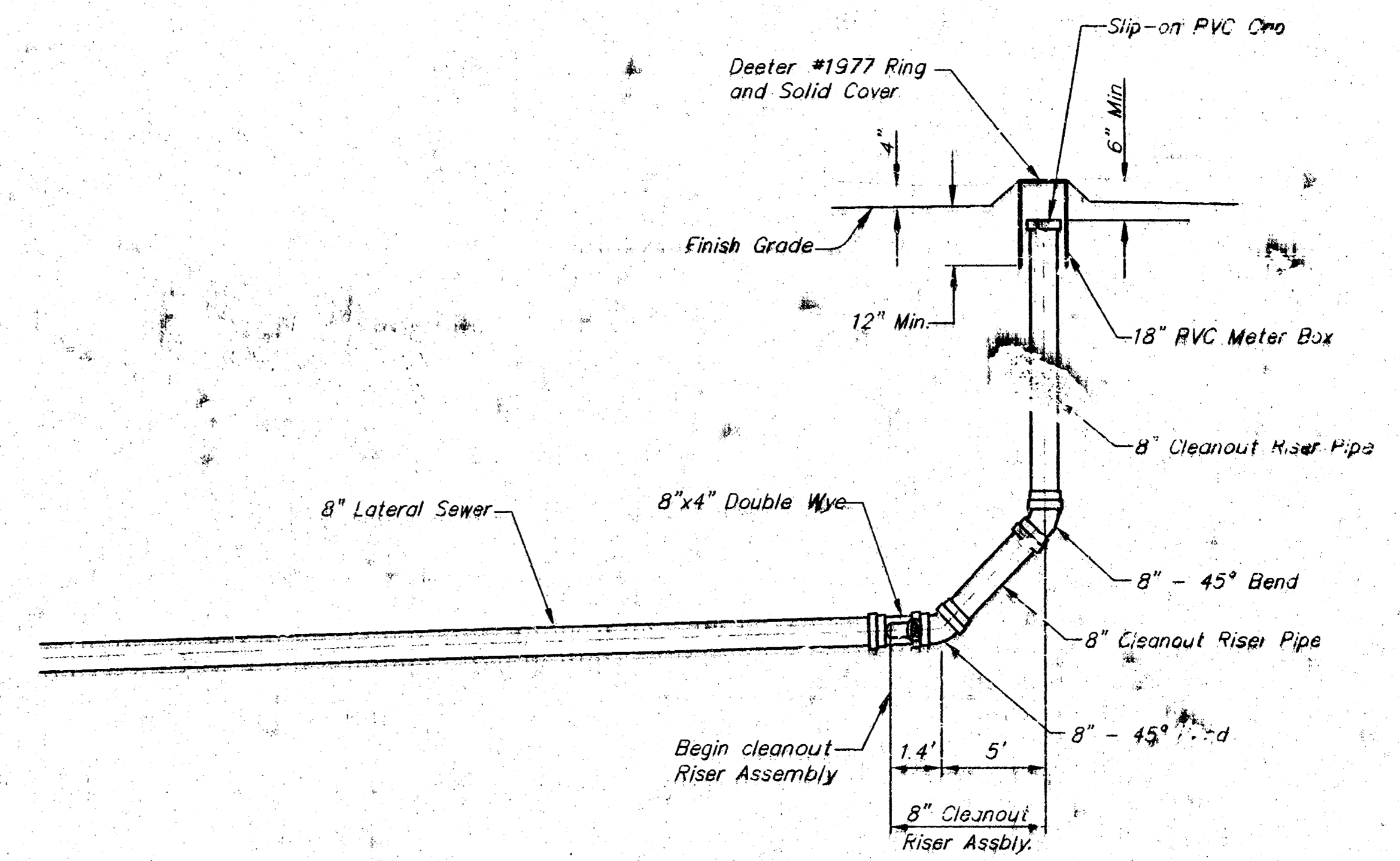
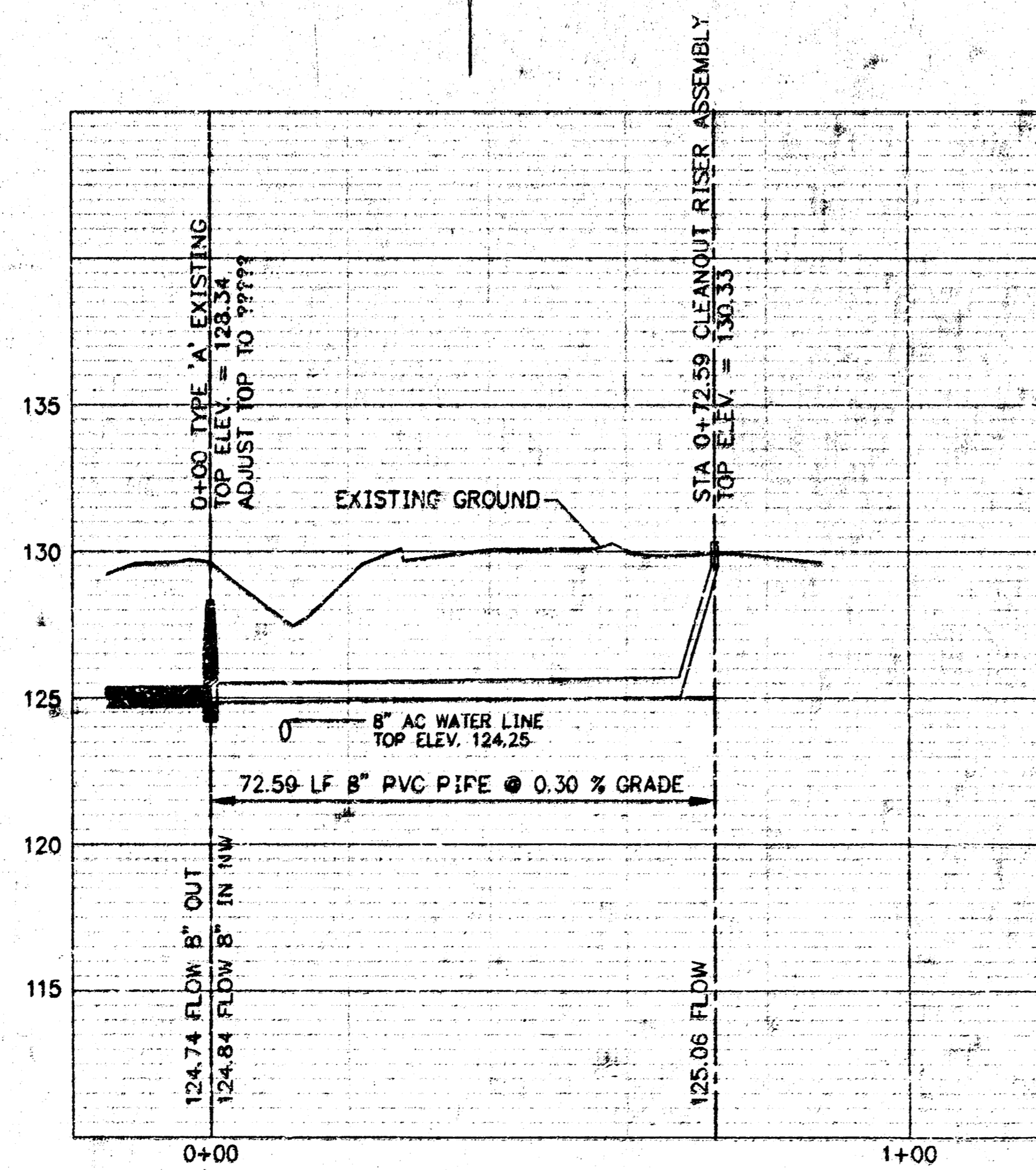
10' x 15' Sanitary Sewer Casement
by separate instrument

33rd ST. N.

REMOVE AND REPLACE FENCE AS NECESSARY
FOR CONSTRUCTION OF SEWER LINE. COST
IS SUBSIDIARY TO SITE CLEARING AND
RESTORATION BID ITEM.

CENTER SECTION OF SEWER PIPE OVER
WATER LINE TO MAXIMIZE DISTANCE
BETWEEN WATER LINE AND JOINTS IN
SEWER LINE

STA 0+00 EXISTING MH. TYP 'A'



8" CLEANOUT RISER ASSEMBLY

<p>THE CITY OF WICHITA</p>	<p>LATERAL 74, MAIN 17, SANITARY SEWER NO. 22</p>	
	<p>M. E. LINDEBAK, P.E. — CITY ENGINEER</p>	
<p>ENGINEER: J. KALLMAN</p>		<p>DRAWN BY: R. LOOMIS</p>
<p>CITY ENGINEER'S OFFICE CITY HALL — SEVENTH FLOOR 425 NORTH MAIN STREET WICHITA, KANSAS 67202 (316) 268-4601 (316) 268-2117 FAX</p>		<p>PROJECT NUMBER: 468-02917 INDEX CODE: 743757</p>
<p>DATE: FEB 99</p>	<p>SHEET 2 OF 2</p>	

18-13-04-15