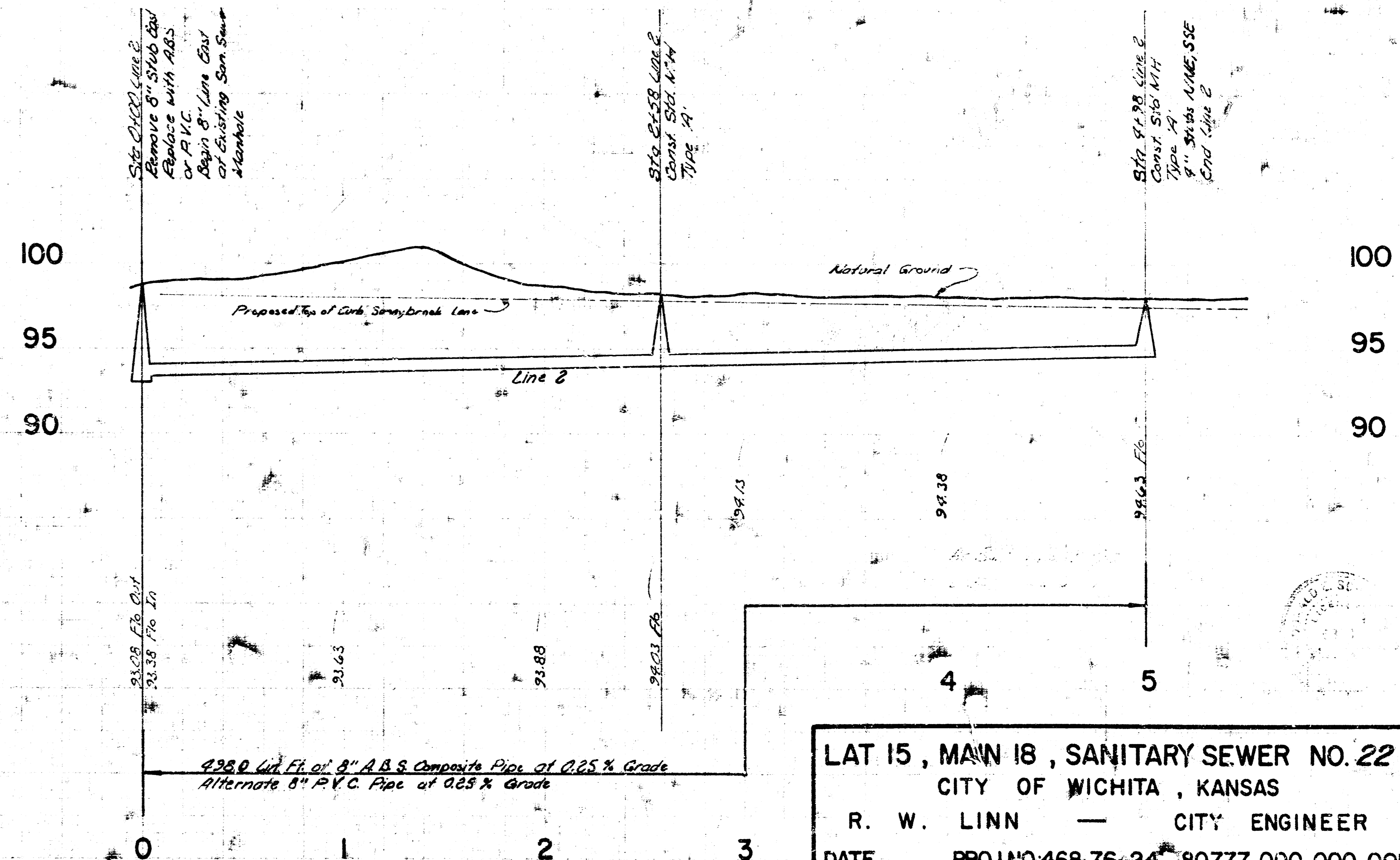
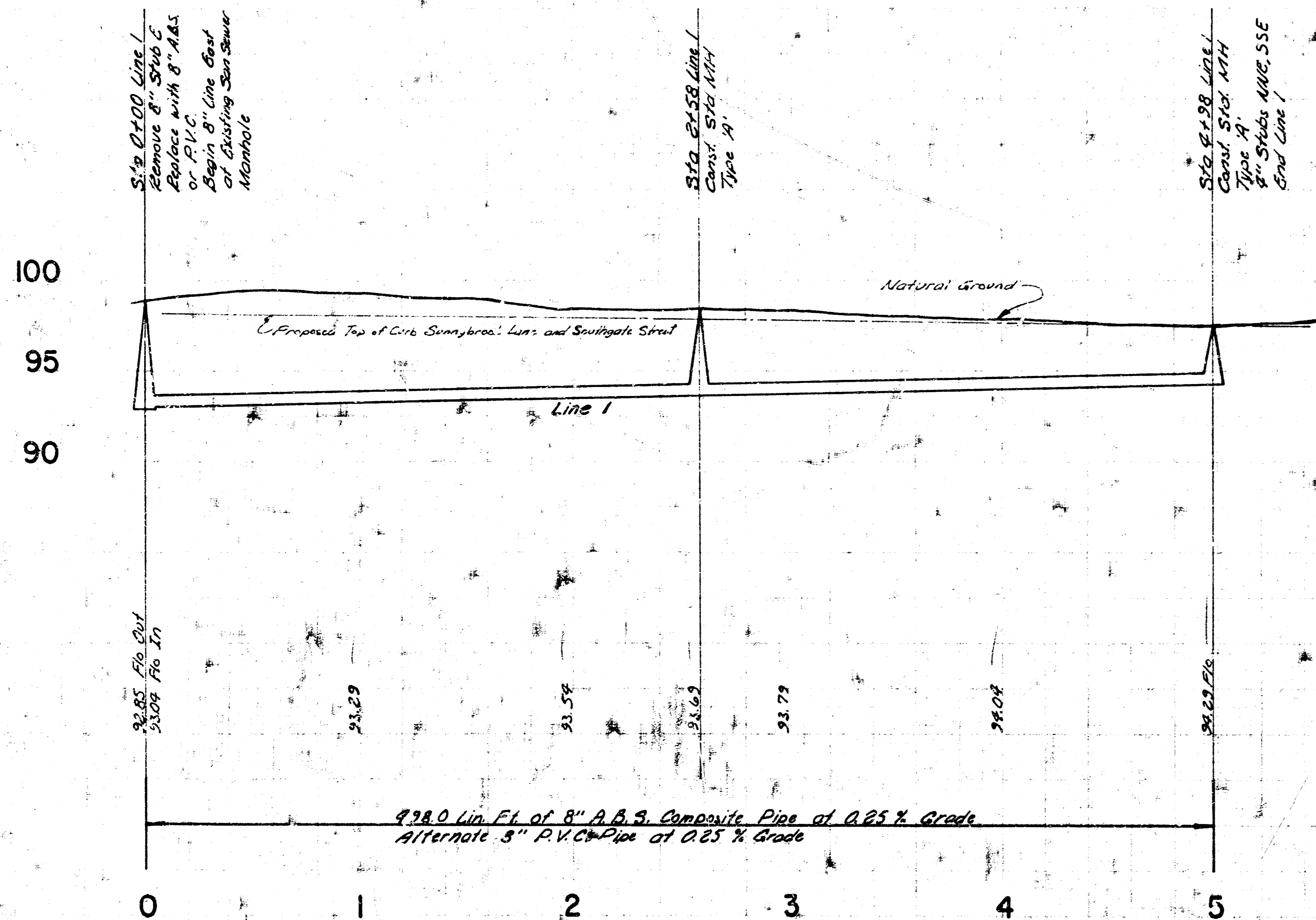
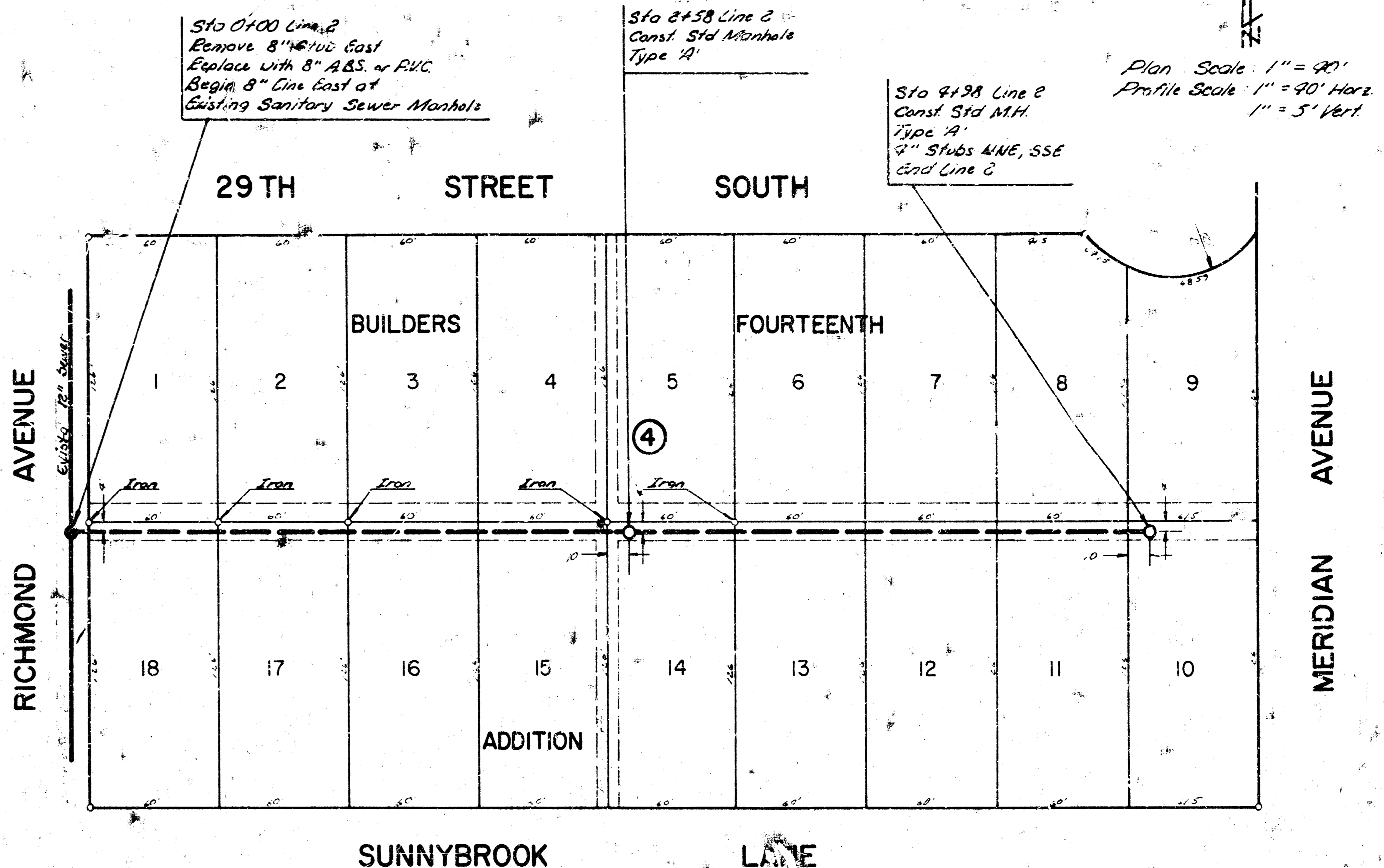
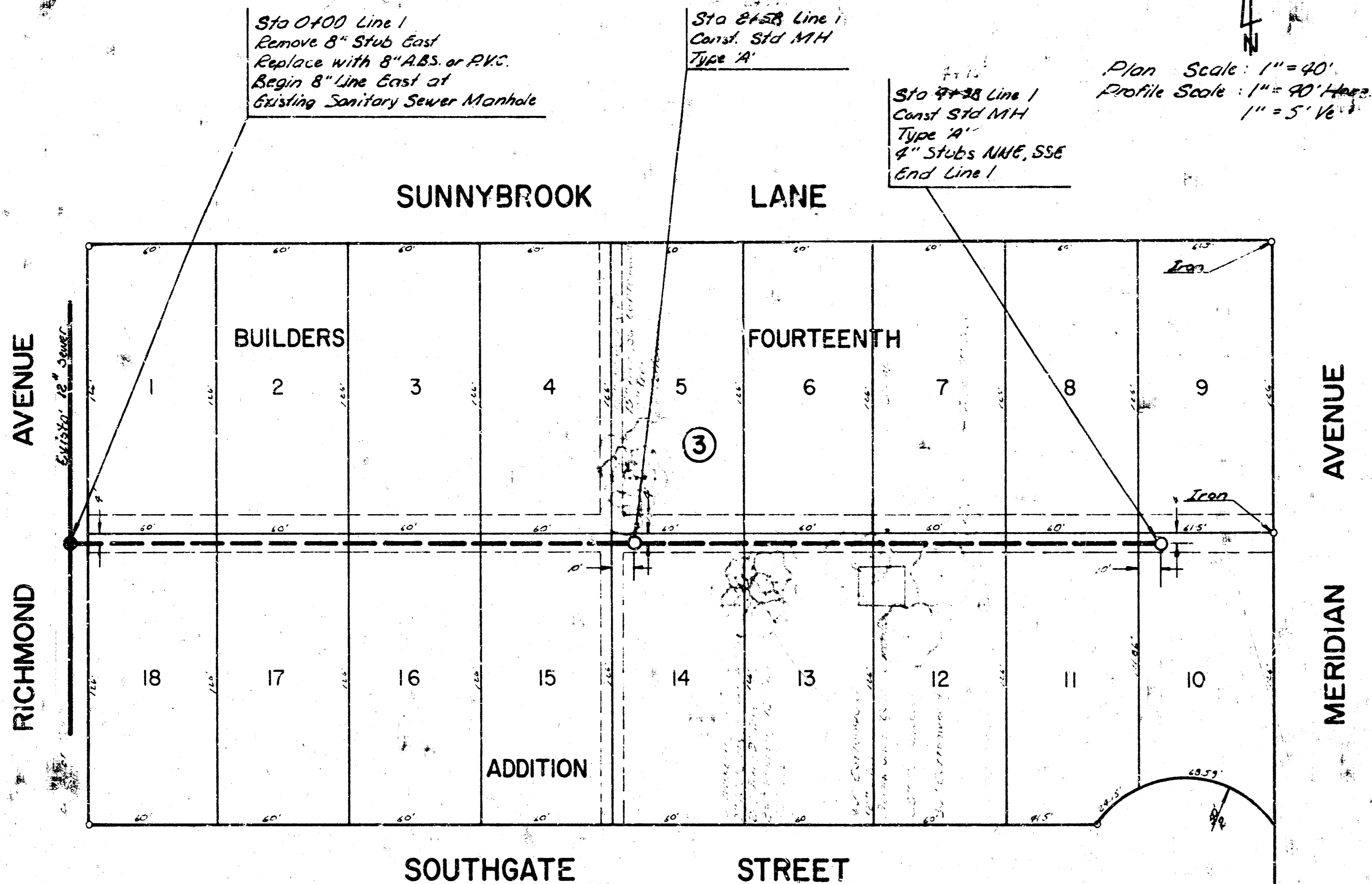


B.M. 98.55 'D' cut on top of the North curb of Sunnybrook, 5' West of the West Line of Richmond.

B.M. 98.55 'D' cut on top of North curb of Sunnybrook, 5' East of West Line Richmond.



LAT 15, MAIN 18, SANITARY SEWER NO. 22
CITY OF WICHITA, KANSAS
R. W. LINN — CITY ENGINEER
DATE _____ PROJ. NO. 468-76-24-80777-000-000-001

14 10 3 10