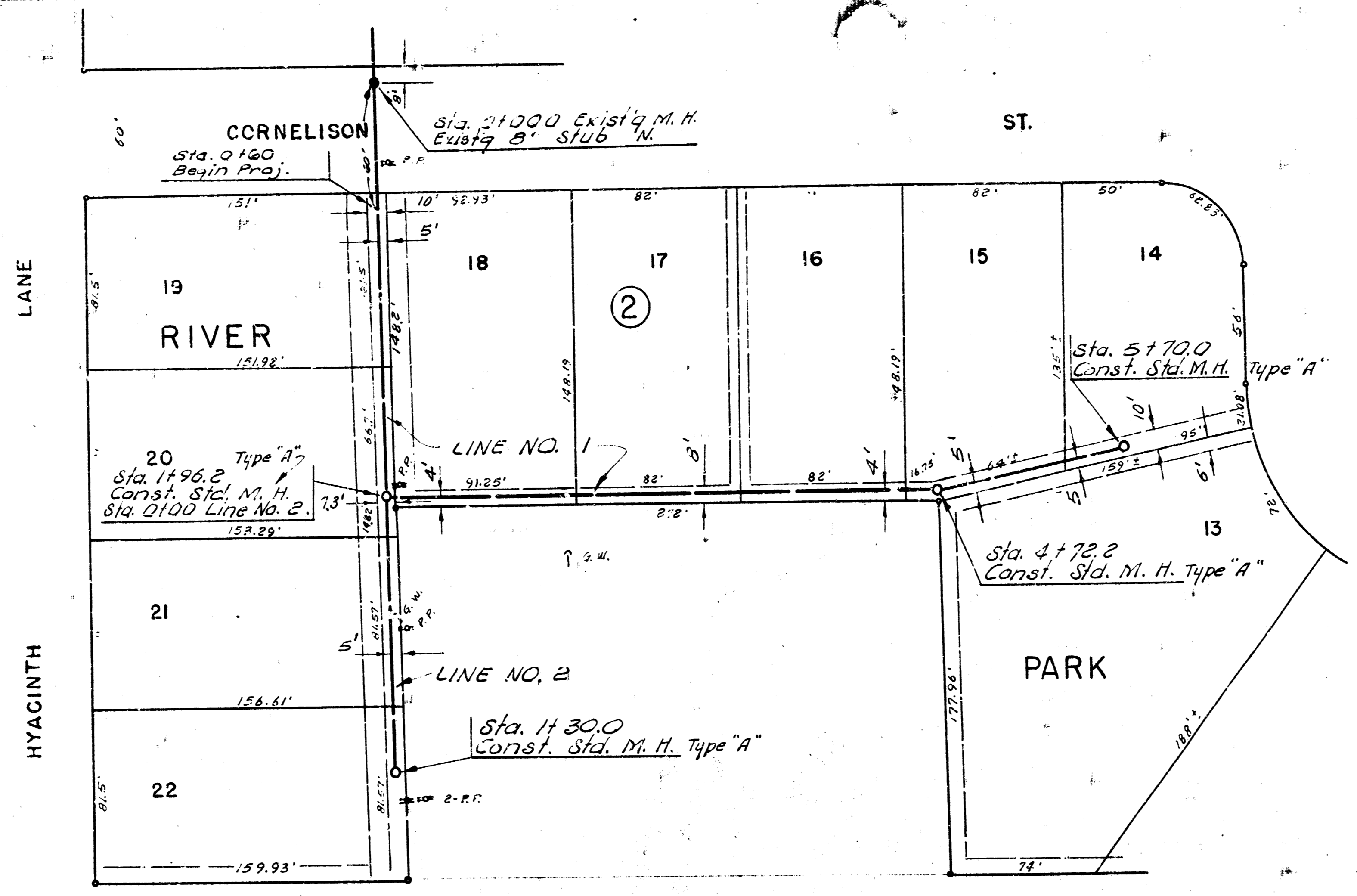


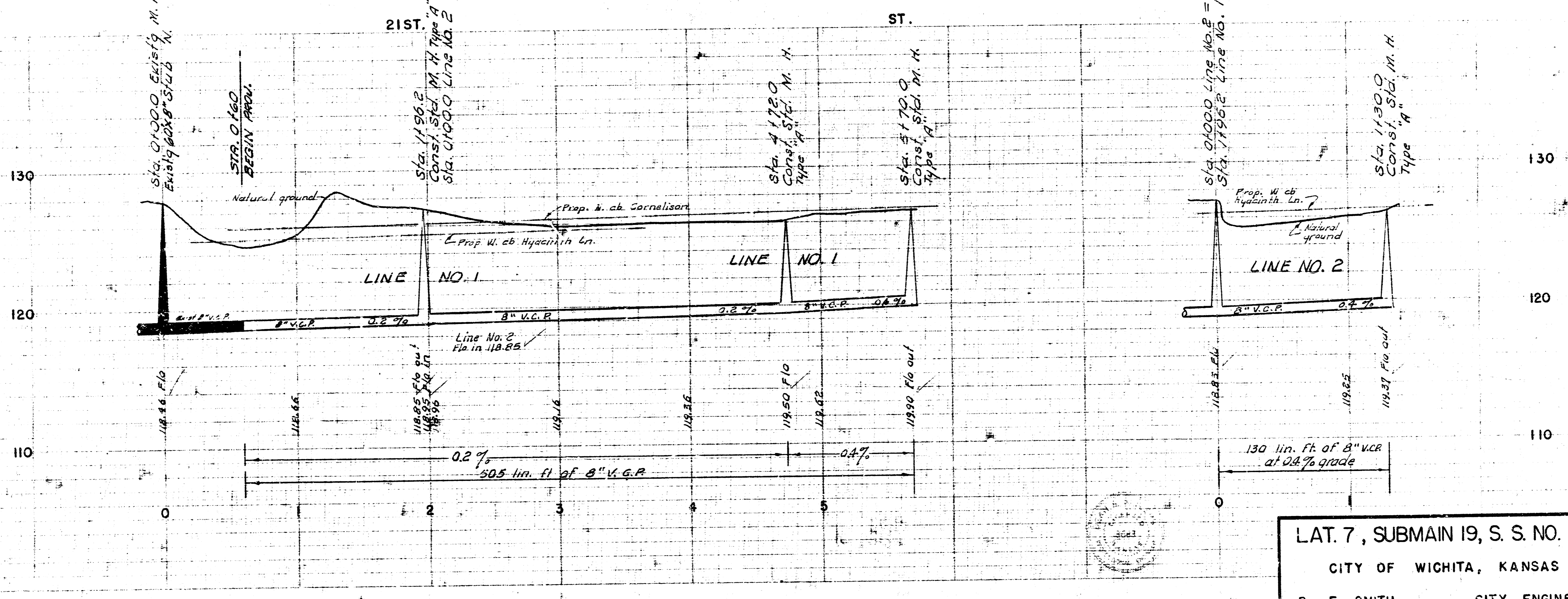
B. M. 125.13 R. R. Spike on W. side P. Pole
 W. side Cornelison St. approx. 152'
 W. of W. Hyacinth Lane.

S. M. 128.97 R. R. Spike on E. side P. Pole
 on N.W. cor. East St. and Hyacinth
 Lane.

Survey by U.F.G.
 Plans by J. W.
 Checked by
 Book No. U.F.G. 109
 2/14



Plan Scale 1" = 40'
 Profile Scale 1" = 40' Horiz.
 4" = 40' Vert.



LAT. 7, SUBMAIN 19, S. S. NO. 22
 CITY OF WICHITA, KANSAS
 B. E. SMITH CITY ENGINEER
 AUG. 1966 PROJECT NO. C25-11

2 5 3