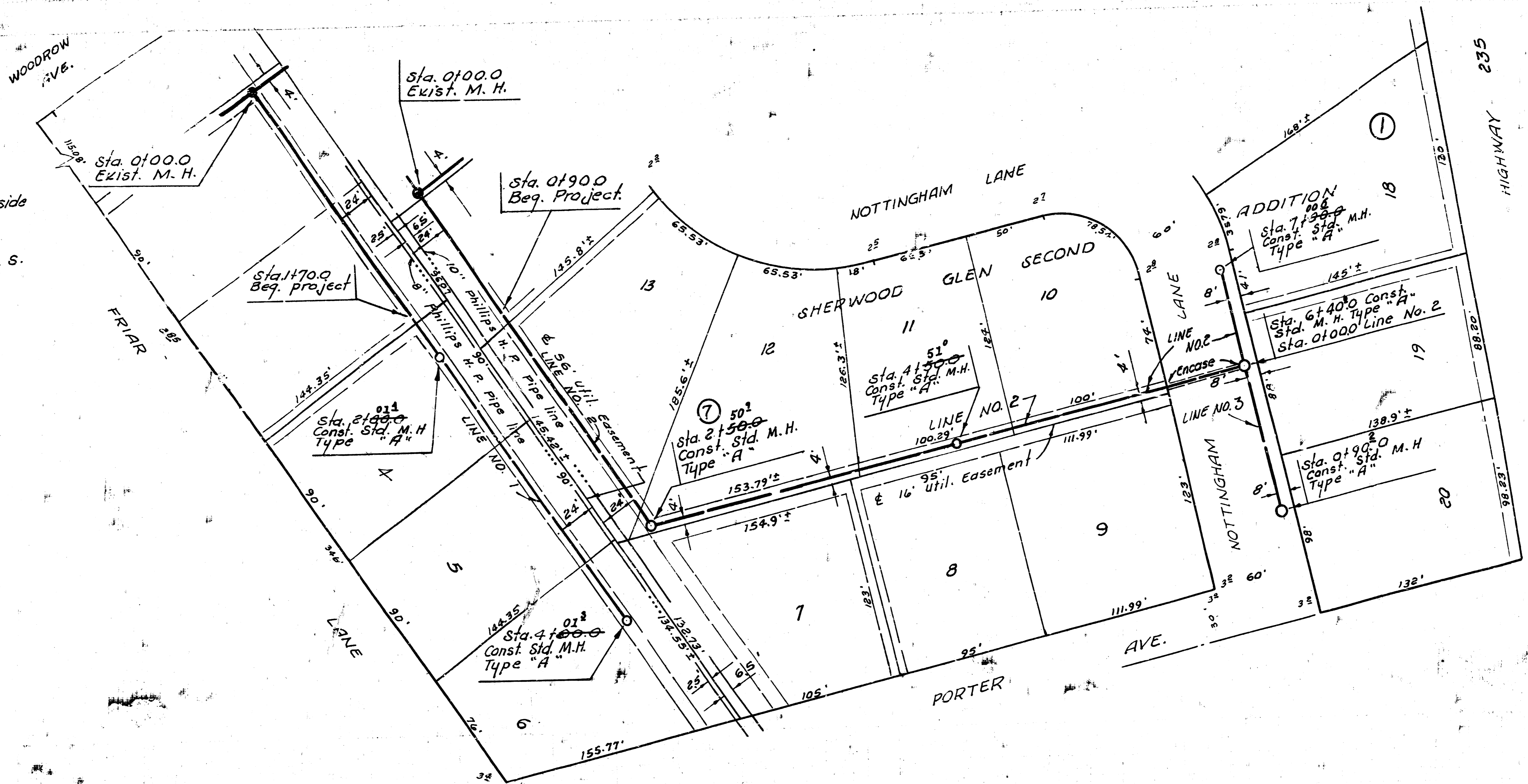


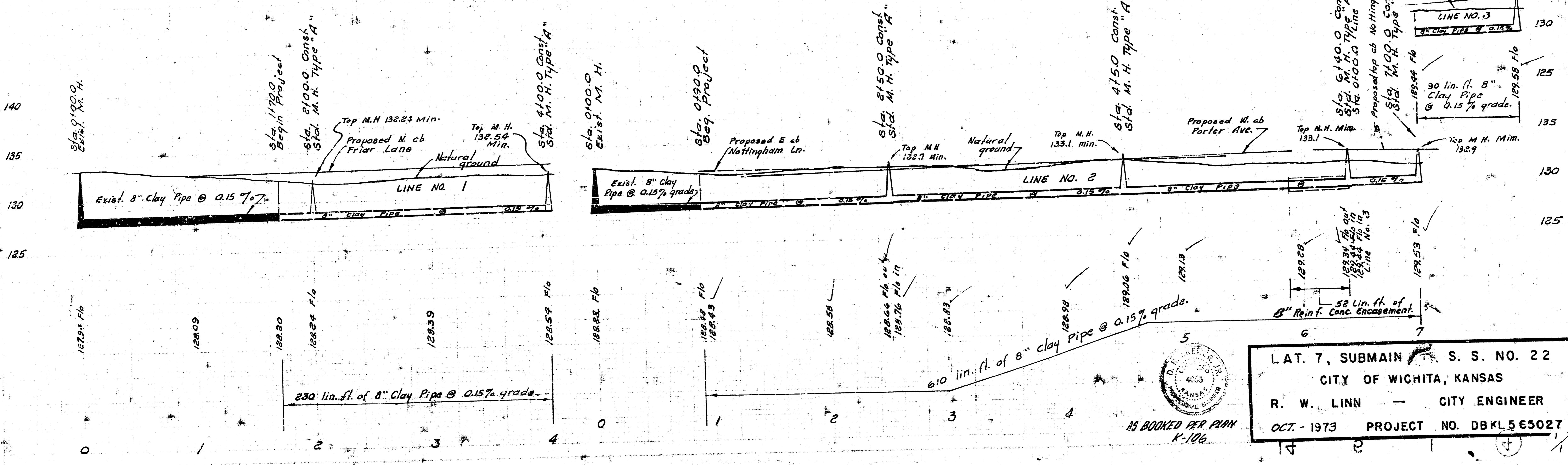
B. M. 131.95 N. Rim M. H. in Woodrow Ave. north side of 37th St. No.

B. M. 134.63 R. R. Spike N. S. P. P. S. S. 37th - 1/4 mi E. of Meridian.



Plan Scale 1" = 40'
 Profile Scale 1" = 5' Vert

NOTE:
 Contractor to provide a minimum of 30 inch cover over sanitary sewer.



No Gas in Woodrow



L. A. T. 7, SUBMAIN S. S. NO. 22
 CITY OF WICHITA, KANSAS
 R. W. LINN — CITY ENGINEER
 OCT. - 1973 PROJECT NO. DBKL565027

15 BOOKED PER PLAN K-106