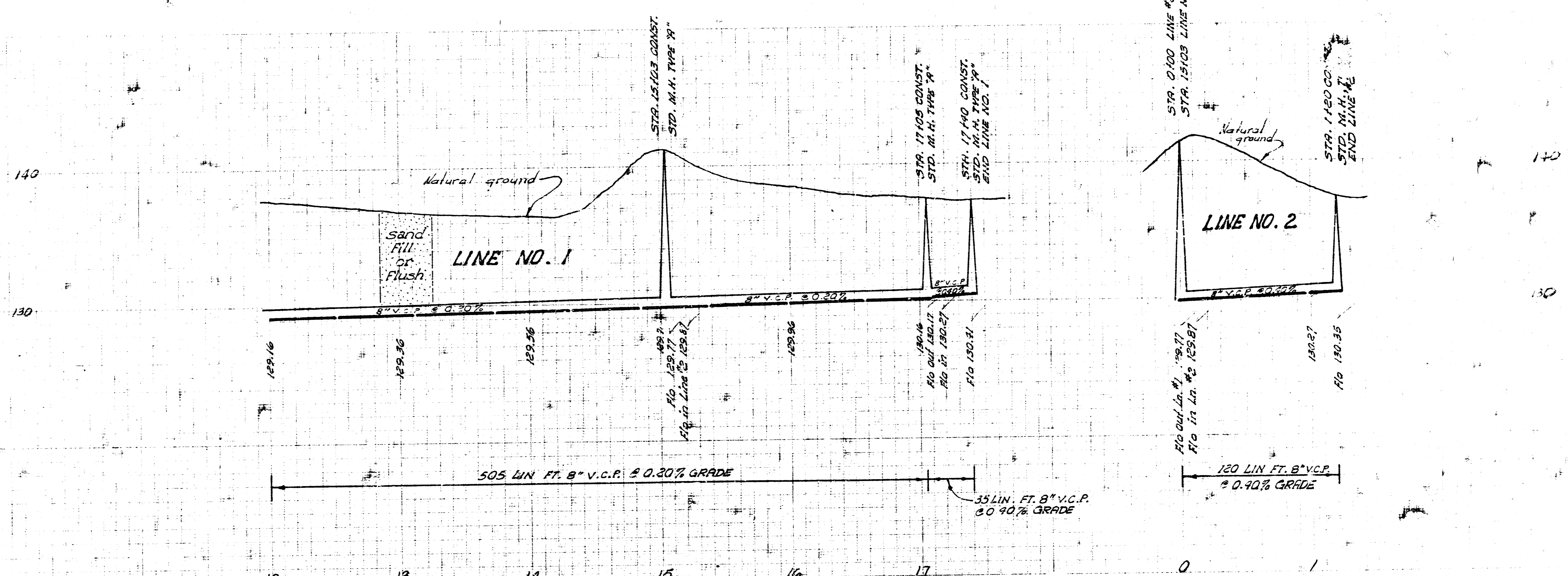
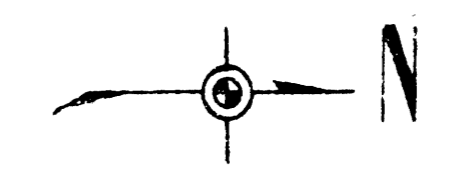
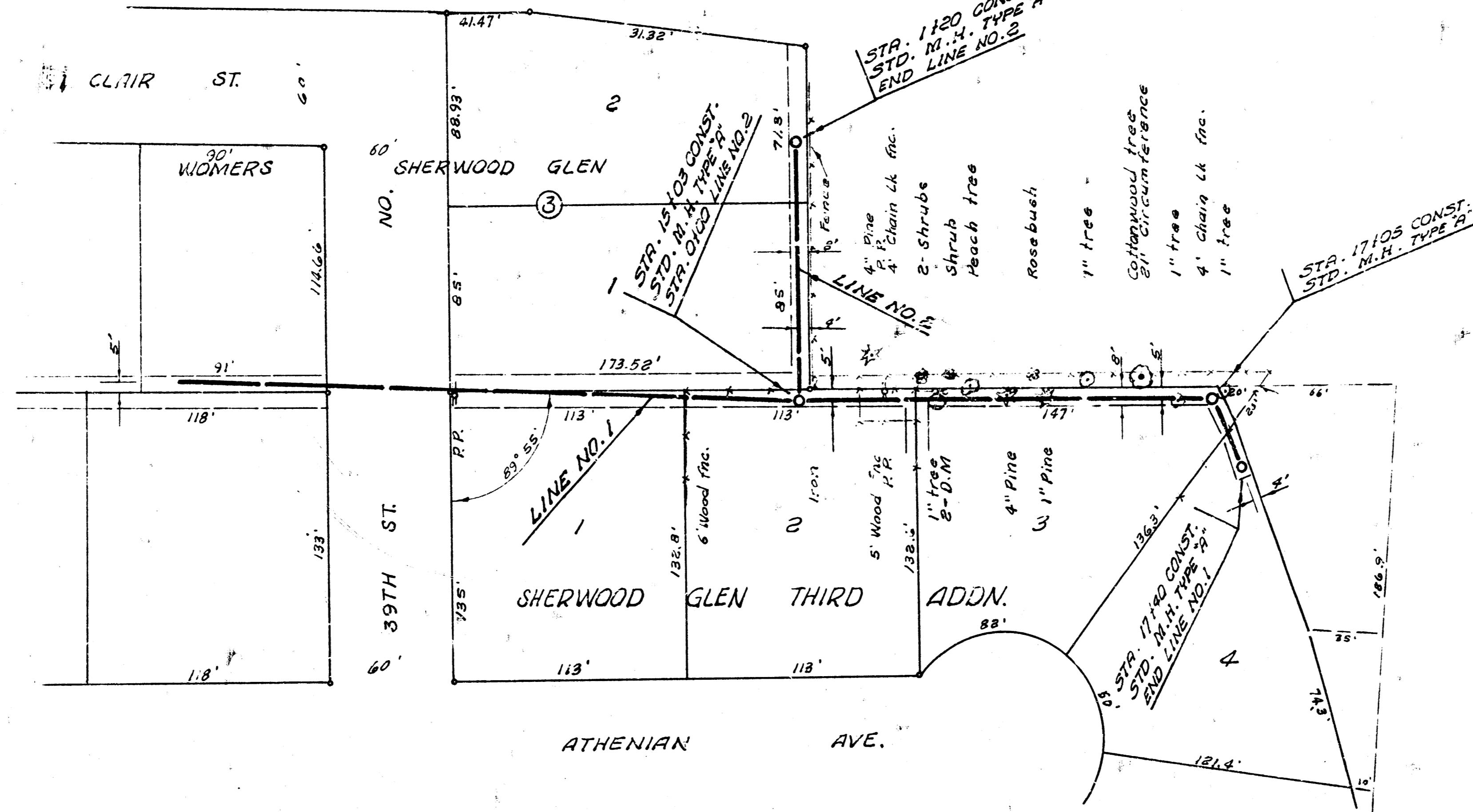
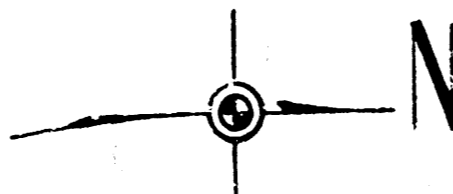


LAT. 9, SUBMAIN 21, S. S. NO. 22  
 CITY OF WICHITA, KANSAS  
 B. E. SMITH CITY ENGINEER  
 JUNE 1966 PROJECT NO. C25-36  
 SHEET NO. 1 OF 3

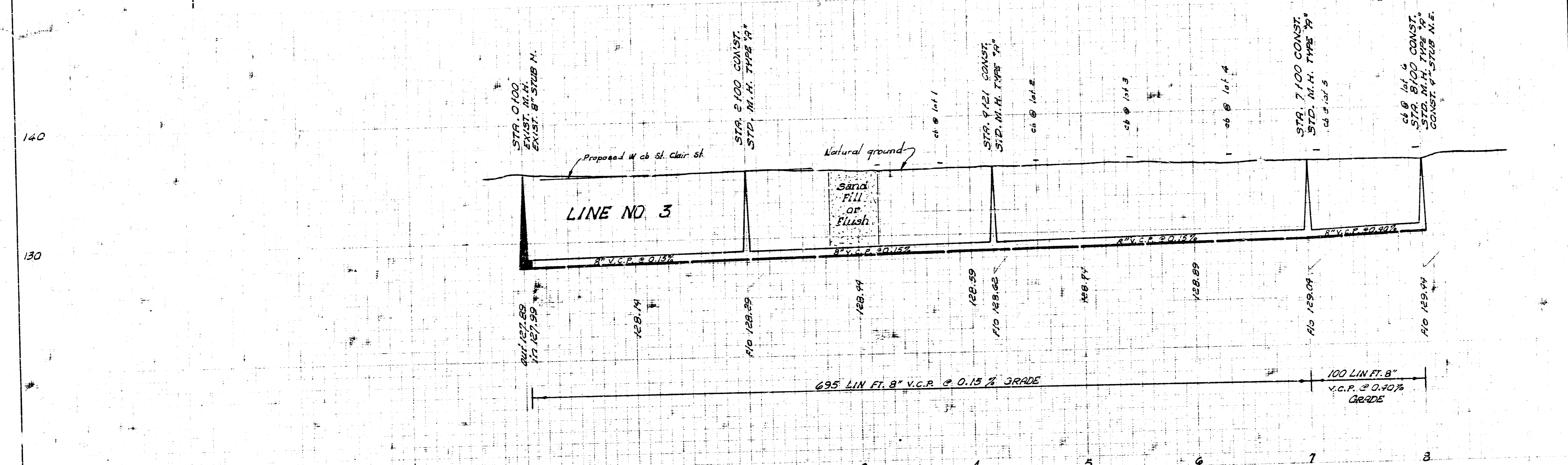
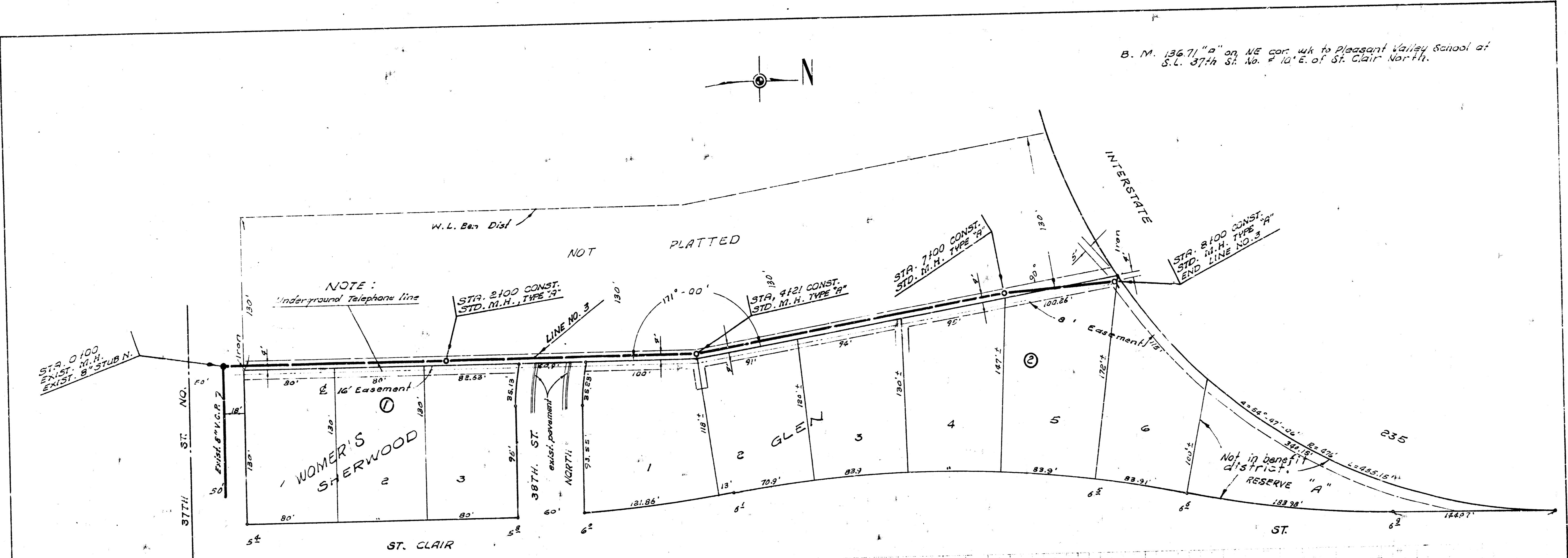
B. M. 135.71 "a" on NE cor. walk Pleasant  
 Van. School @ SL 37th & 10th  
 E. of 146 St. Clair Ave.



LAT. 9, SUBMAIN 21 S. S. NO. 22  
 PROJECT NO. C25-36  
 SHEET NO. 2 OF 3



B. M. 13671 "a" on NE cor. wk to Pleasant Valley School at S.L. 37th St. No. 10' E. of St. Clair North.



LAT. 9, SUBMAIN 21, S. S. NO. 22  
PROJECT NO. C25-36  
SHEET NO. 3 OF 3