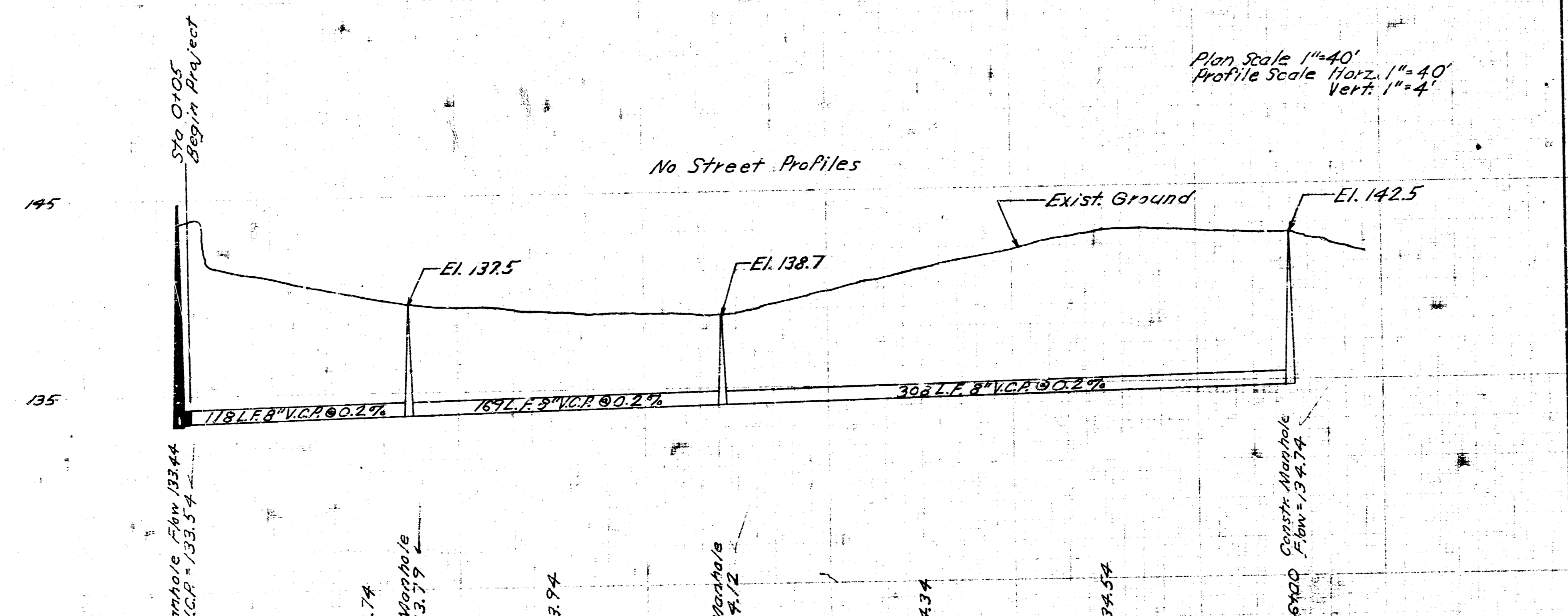
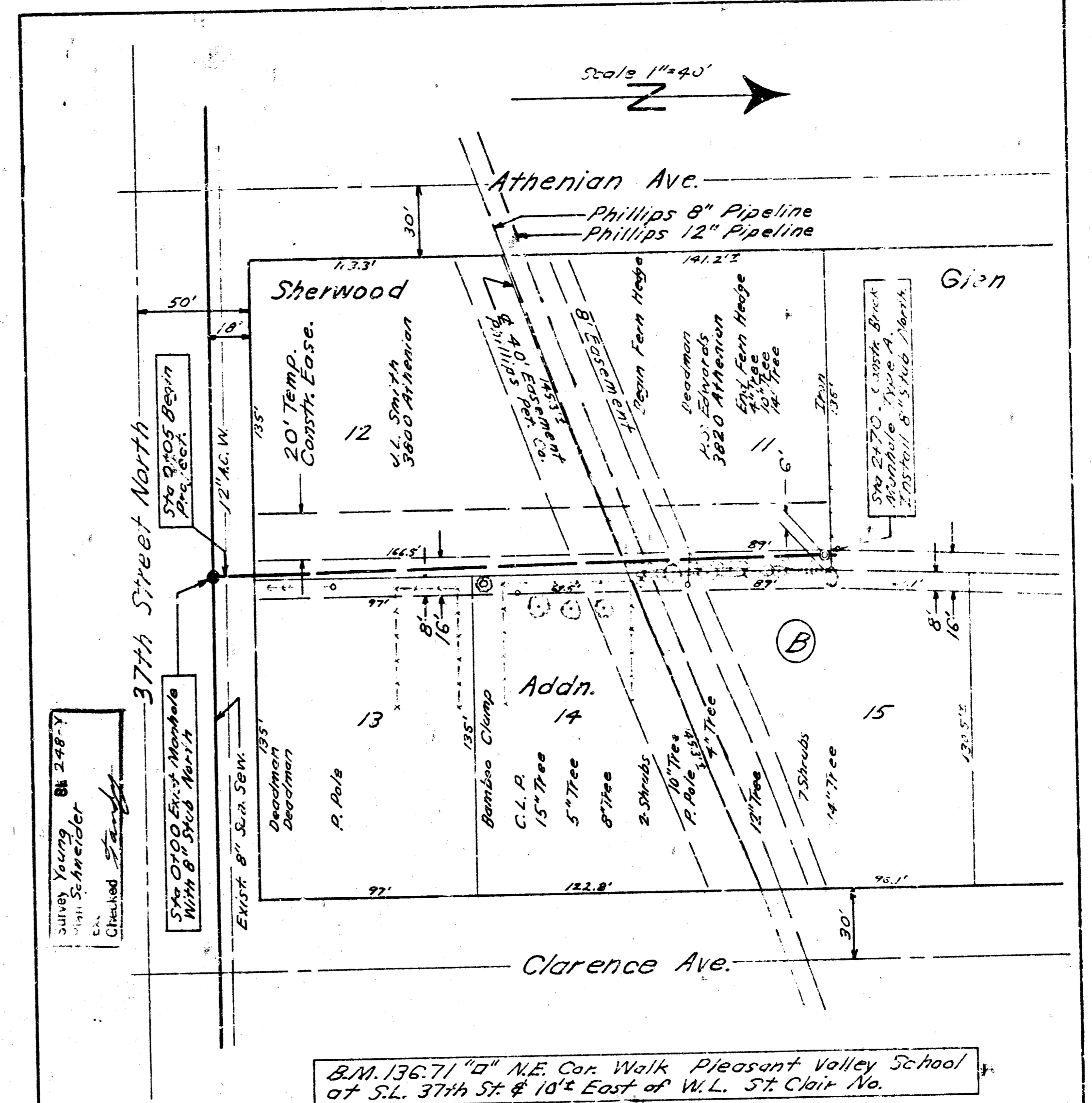


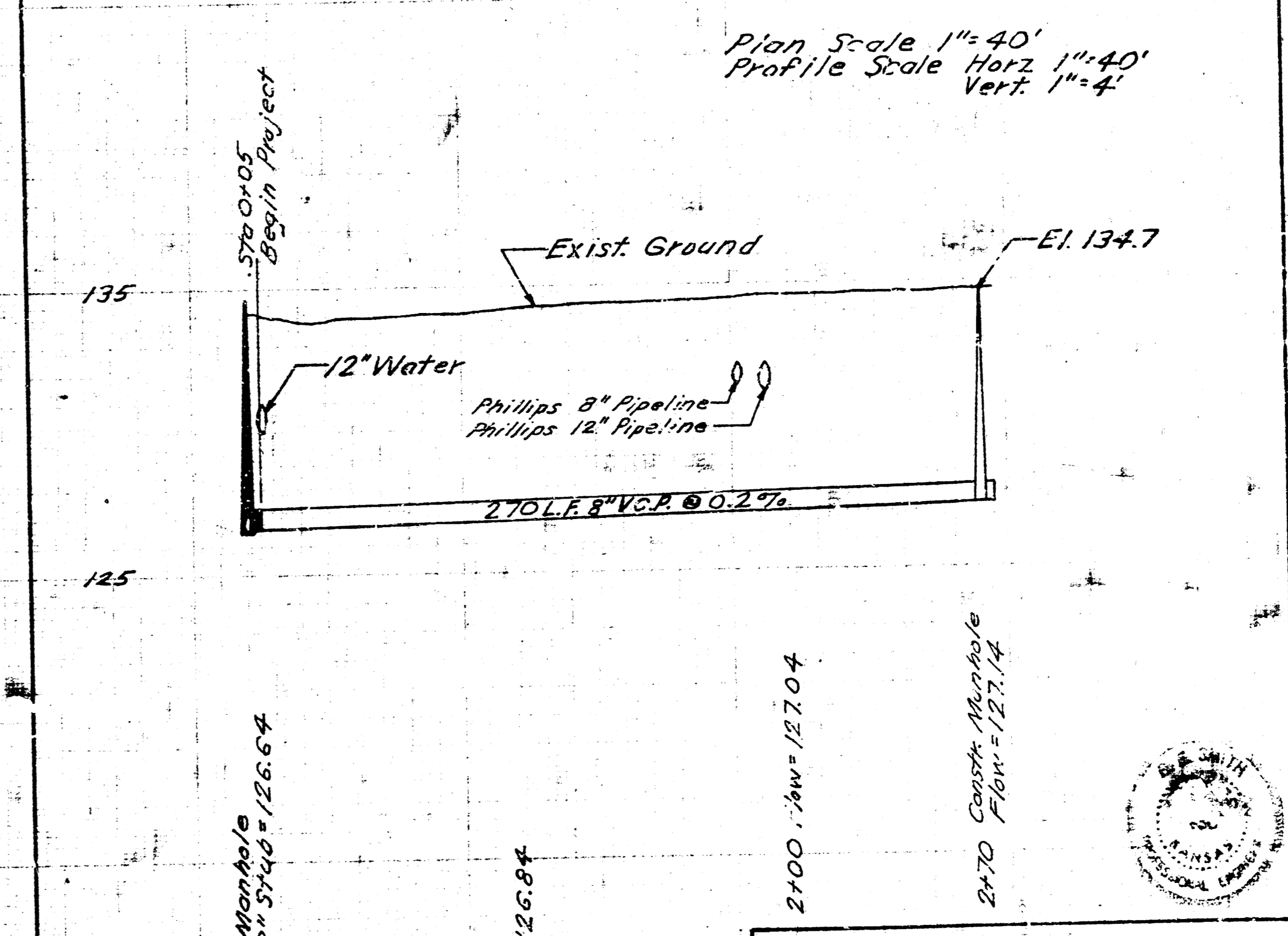
B.M. 142.19 RR Spike West Side P. Pole S.W. Cor. 11th St & Ridge Road



LAT. 27, WESTLINK SEWER  
CITY OF WICHITA, KANSAS  
B. E. SMITH, CITY ENGINEER  
PROJ. NO. C 27-39  
DATE:



B.M. 136.71 1/4" N.E. Cor. Walk Pleasant Valley School at S.L. 37th St & 10' East of W.L. St. Clair Av.



LAT. 12, SUB. 21, S.S. 22  
CITY OF WICHITA, KANSAS  
B. E. SMITH, CITY ENGINEER  
PROJ. NO. C 27-54  
DATE:

