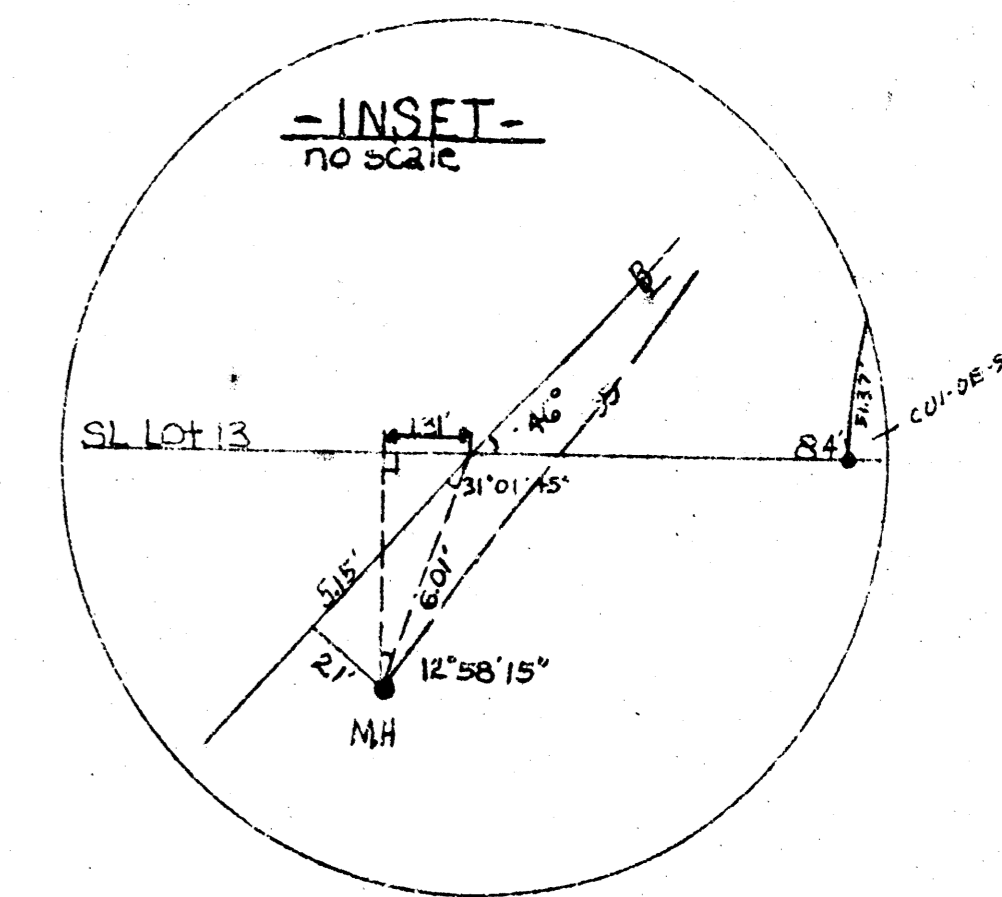
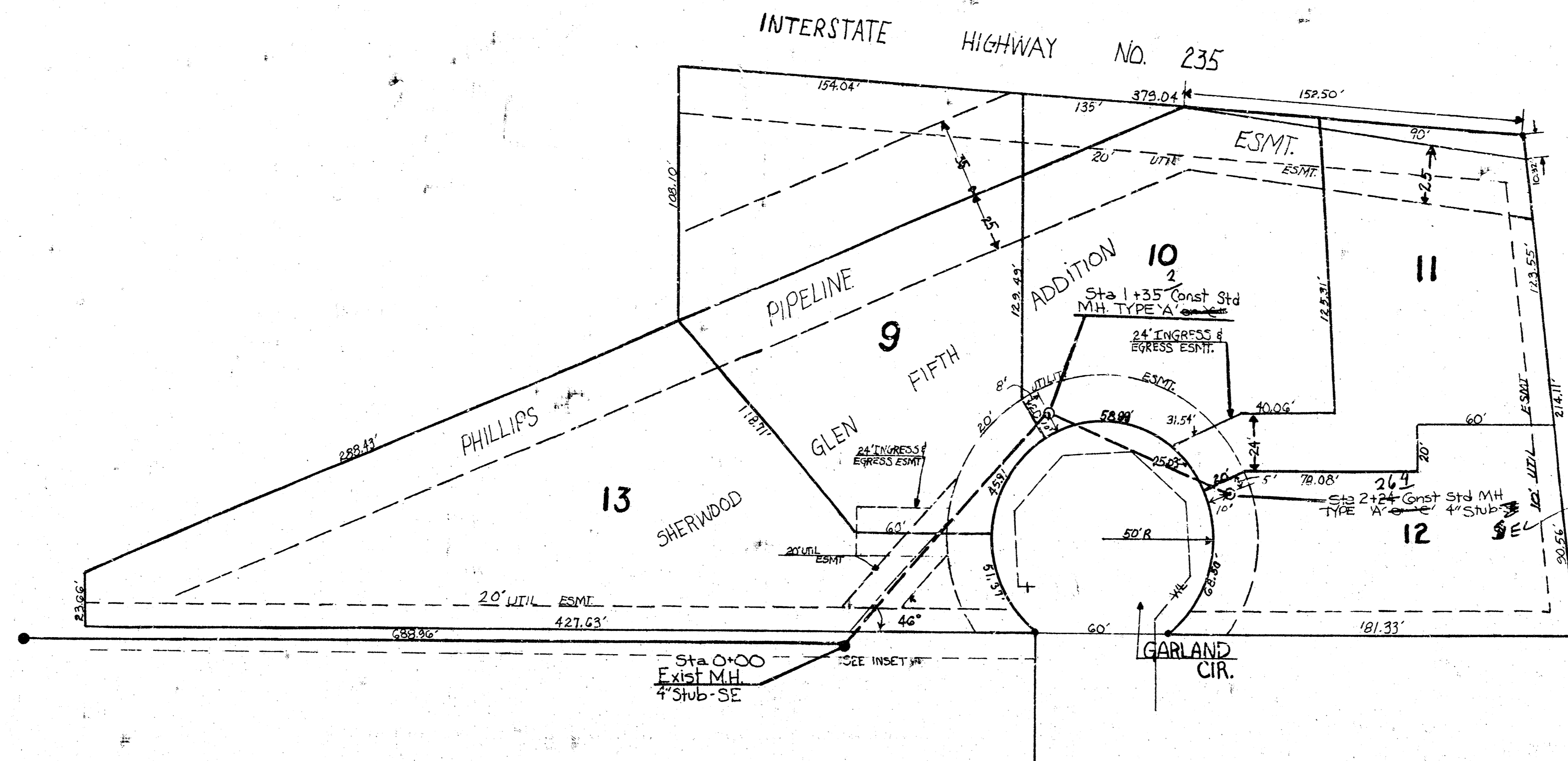
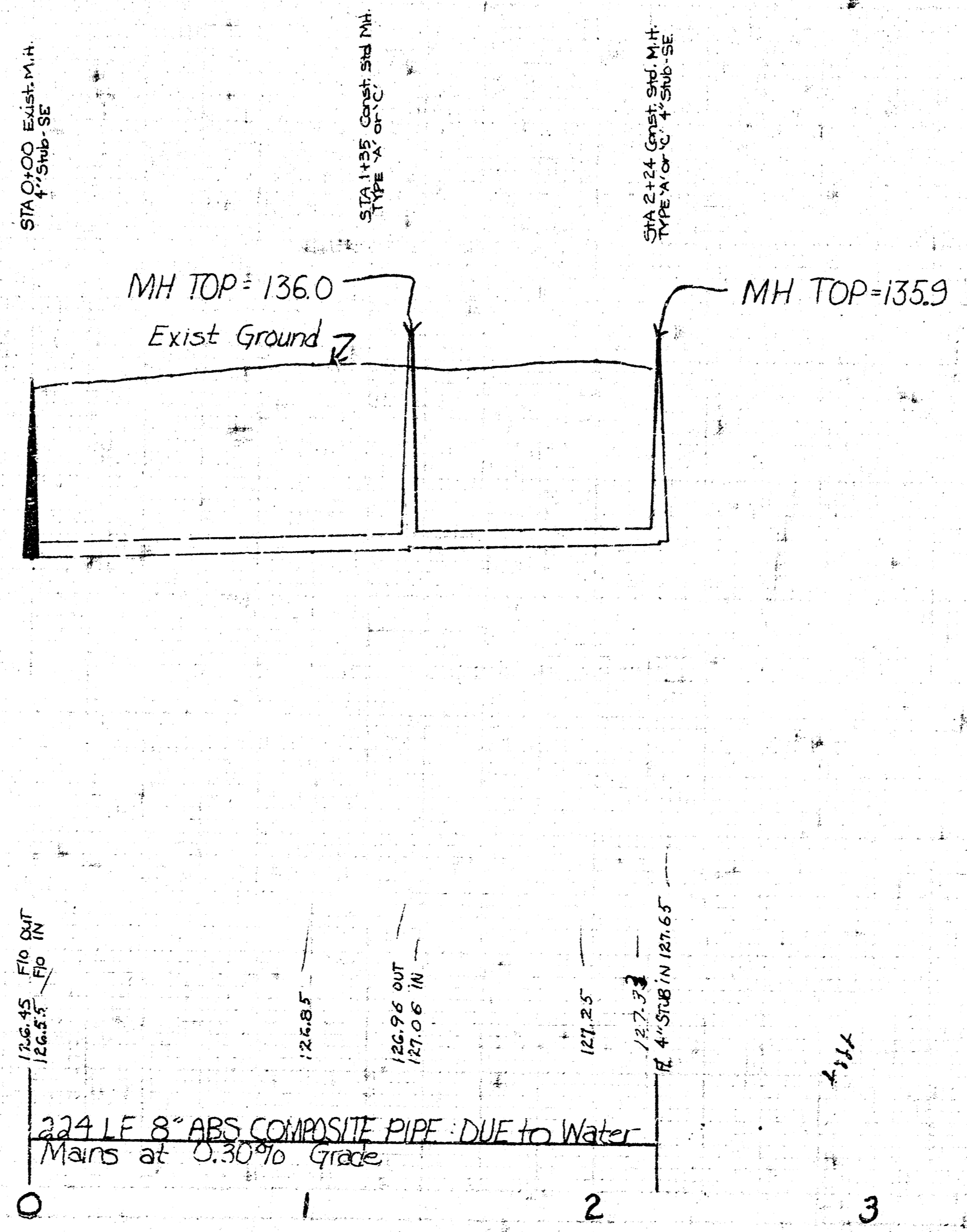


BM 1348 4" TOP OF W.CURB OF GARLAND CIR APPROX 2'
 S OF SOUTH LINE SHERWOOD GLEN 5th ADD.
 BM 13570-ESTB. M IN MULLER & EAST 3. WATER HYDRANT
 AT SW COR NOTTINGHAM & PORTER
 BM 13379 4" TOP N. LB FRIAR AT W. PORTER

NORTH
 SCALE PLAN 1" = 40'
 PROFILE 1" = 40' HORIZ.
 1" = 5' VERT.



140
 135
 130
 125
 120



As Built
 JSS
 8/81

135
 130
 125
 120

LAT 34, MAIN 21 SS#22
 CITY OF WICHITA, KANSAS
 R.W. BRUGGEMAN
 DIRECTOR OF ENGINEERING CITY ENGINEER
 468-76-245-81008-000-000-001

FIL MED FROM THE BEST