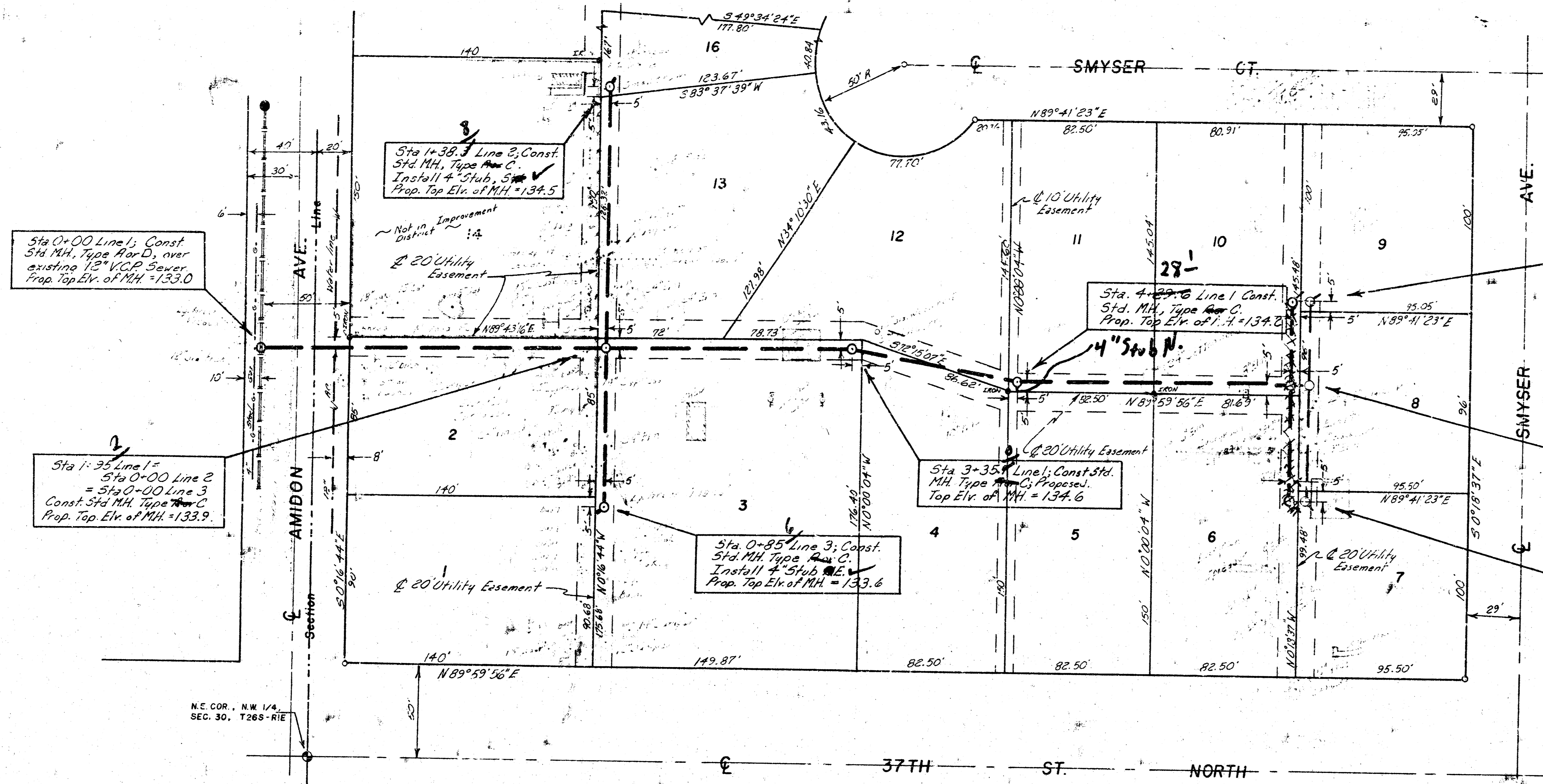


D. DULLEA
J. LINDSEY
8/7/81

D. DULLEA
J. LINDSEY
8/7/81

D. DULLEA
J. LINDSEY
8/7/81



SHERWOOD ESTATES ADDITION
10
WICHITA, SEDGWICK COUNTY, KANSAS

44'-
Sta. 0+00 Line 4; Const. Std. MH, Type C; Install 4" Stub, 5' W. Proposed Top Elev. of MH = 133.9

4'-
Sta. 5+83.9 Line 1 = Sta. 0+00 Line 4 Const. Std. MH, Type C; Proposed Top Elev. of MH = 134.2

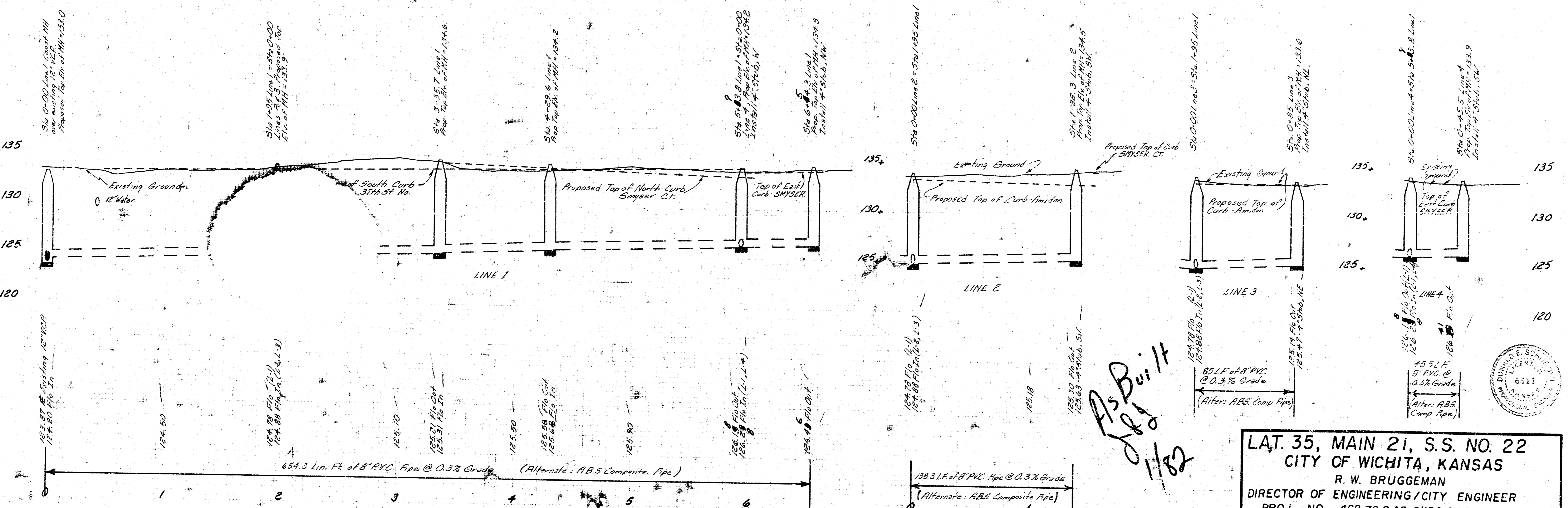
53'-
Sta. 6+00 Line 1; Const. Std. MH, Type C; Install 4" Stub, 5' W. Proposed Top Elev. of MH = 134.3

Scale:
1" = 40' Plan
1" = 40' Horiz. Profile
1" = 5' Vert. Profile

Note: Any tree in which in the opinion of the engineer can be saved shall be spared.

CAUTION
UNDERGROUND UTILITIES

Bench Marks: 133.39 - City Sta. 10+39.9 E and 53' S. of 21st St. N. & Amidon
135.53 - S.E. Cor. of Front Conc. Porch of 3901 N. Clarence



As Built
1/82

LAT. 35, MAIN 21, S.S. NO. 22
CITY OF WICHITA, KANSAS
R. W. BRUGGEMAN
DIRECTOR OF ENGINEERING/CITY ENGINEER
PROJ. NO. 468-76-245-81136-000-000-001
DATE _____ SHEET 1 of 1

