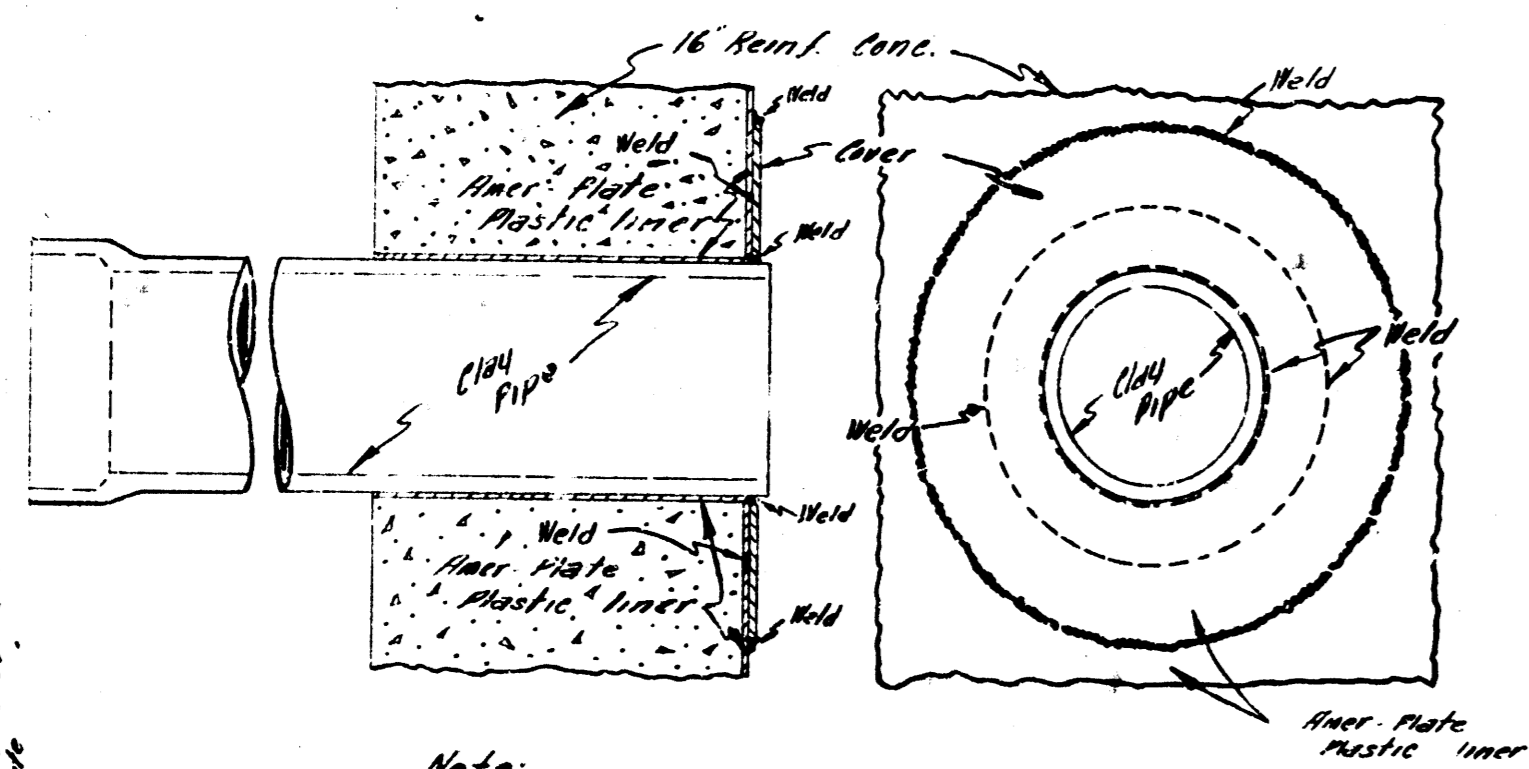


Note:
 Existing Siphon Manhole is Plastic lined, Reinforced Concrete with 8 Wall Thickness of 12" Plastic lining To Be Removed Where Pipe is Broken In.
 Reinforcement in Concrete is #4 @ 12" Centers Horiz. # 5 @ 12" Centers Vertically, Two Bars.



Note:
 Cover Plate Plastic Lining To Be Applied By Person Approved By Manufacturer & City Engineer.

D.M. 96.31 "G" 1 Globe E. End. Rad. N.S. Stafford & E.L. Ash

Note:
 Loose Fill Encountered Crossing The Old Chisholm Creek And Should Be Removed To Solid Ground & The Ditch Shall Be Filled With 2 Sack Conc. To The Sides of The Sewer.

Plan Scale 1"=40'
 Profile Scale 1"=40' Nos 1'-4" Vertical

lateral 3. Sanitary Sewer 23
 City of Wichita, Kansas
 B.E. Smith City Engineer
 Project No. C26-88 Date-SEPT. 1952