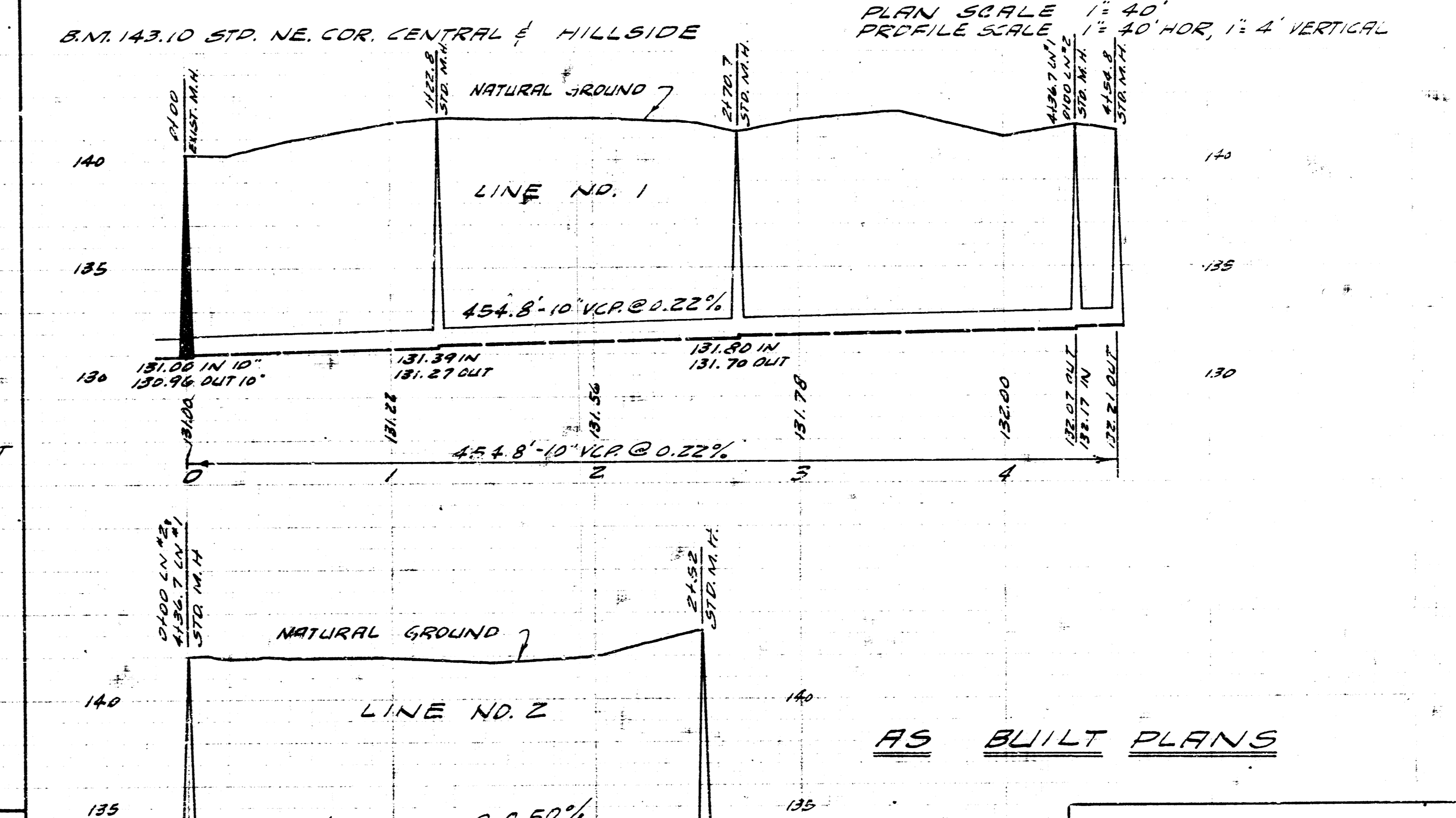
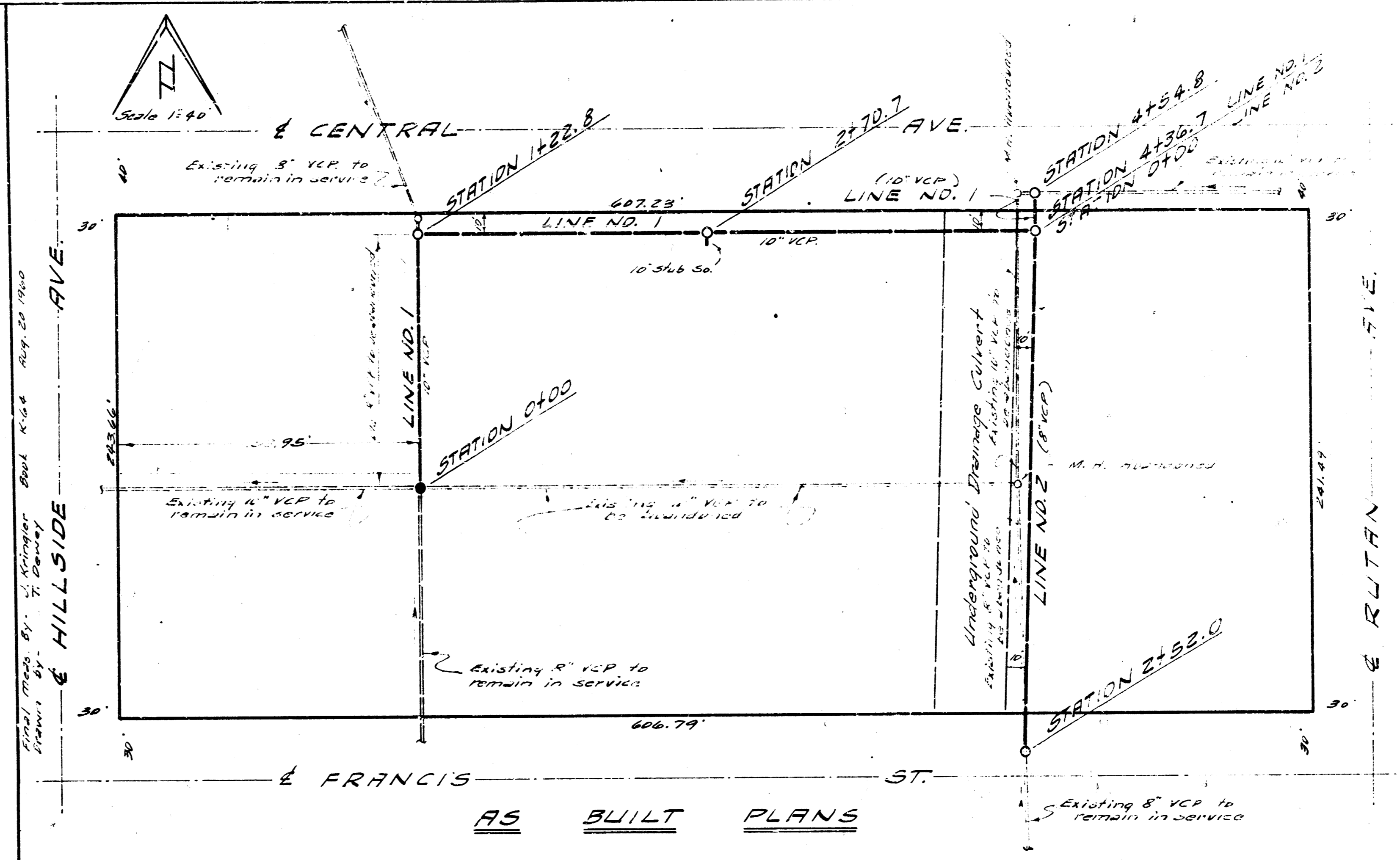


EXT. OF LAT 7 55 23 FOR
WICHITA UNIVERSITY
CITY OF WICHITA, KANSAS
B.E. SMITH CITY ENGINEER
PRIVATE JOB AUG., 1960



RELOCATION OF A PORTION
OF DIST. C. 5512
CITY OF WICHITA, KANSAS
B.E. SMITH CITY ENGINEER
PRIVATE JOB AUG., 1960