

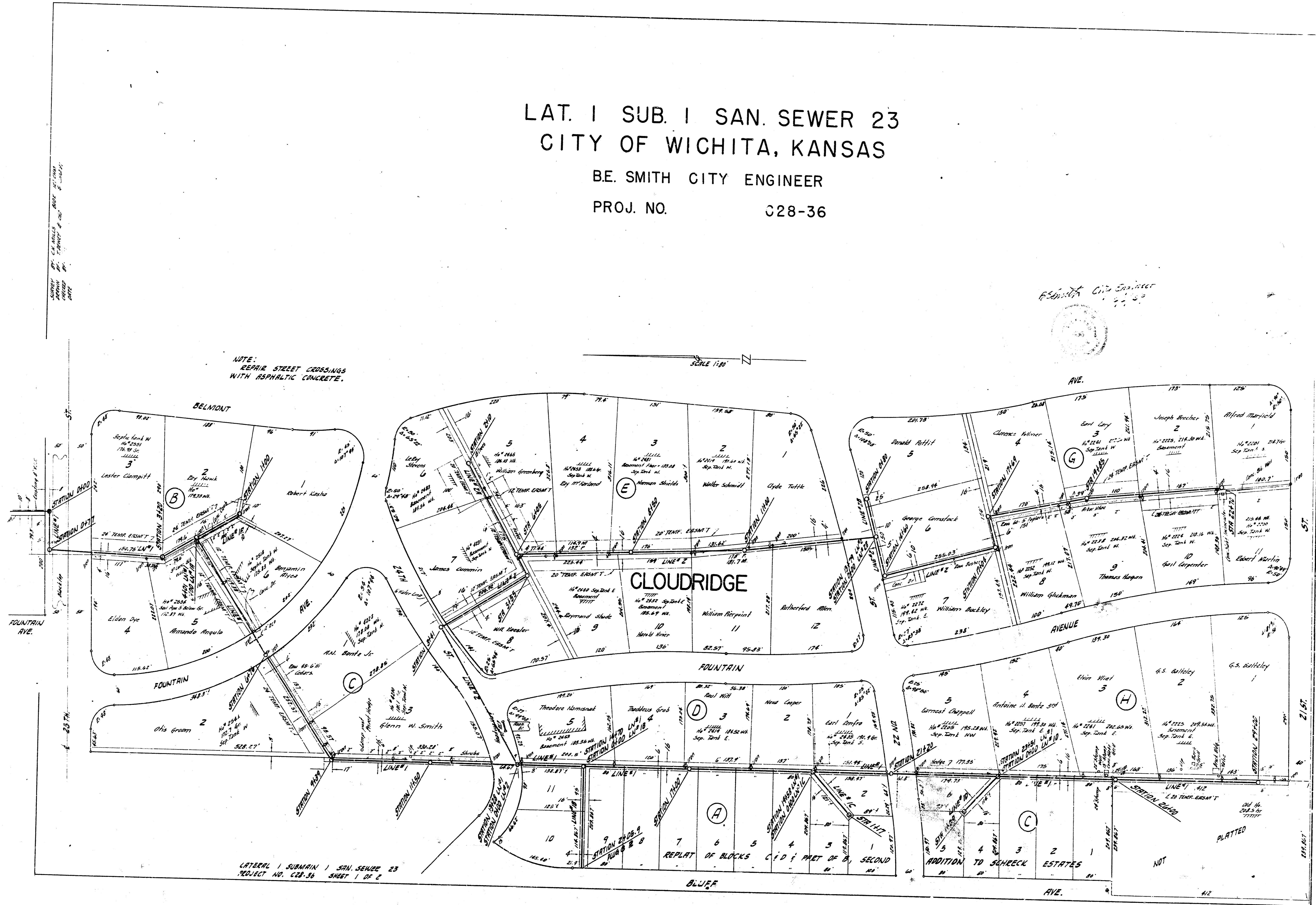
LAT. I SUB. I SAN. SEWER 23
CITY OF WICHITA, KANSAS

B.E. SMITH CITY ENGINEER
PROJ. NO. C28-36

B.E. Smith City Engineer
7-2-36

NOTE:
REPAIR STEEL CROSSINGS
WITH ASPHALTIC CONCRETE.

SCALE 1"=80'



LATERAL I SUBMAIN I SAN. SEWER 23
PROJECT NO. C28-36 SHEET 1 OF 2

CLOUDRIDGE

REPLAT OF BLOCKS C & D; PART OF B, SECOND
ADDITION TO SCHRECK ESTATES

AVE.

done 8-3

1/2

