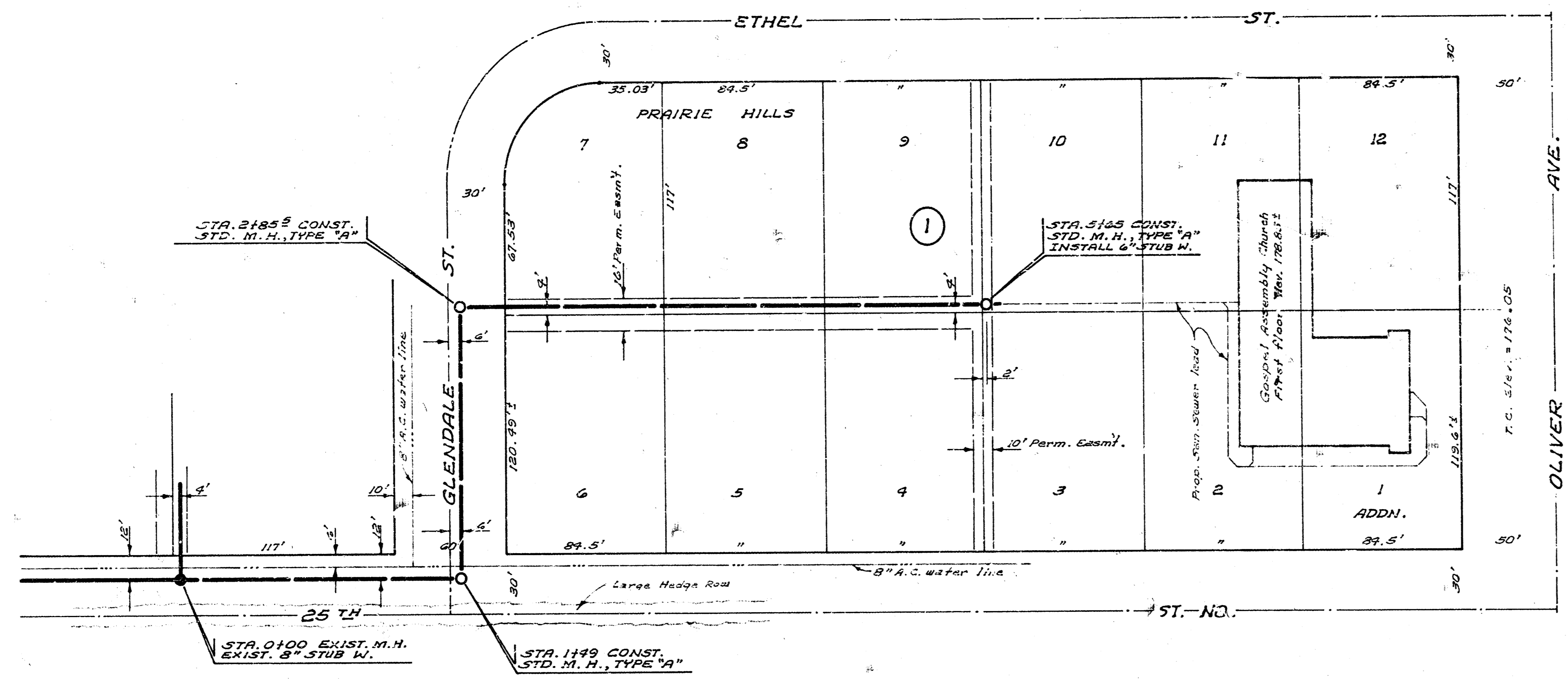
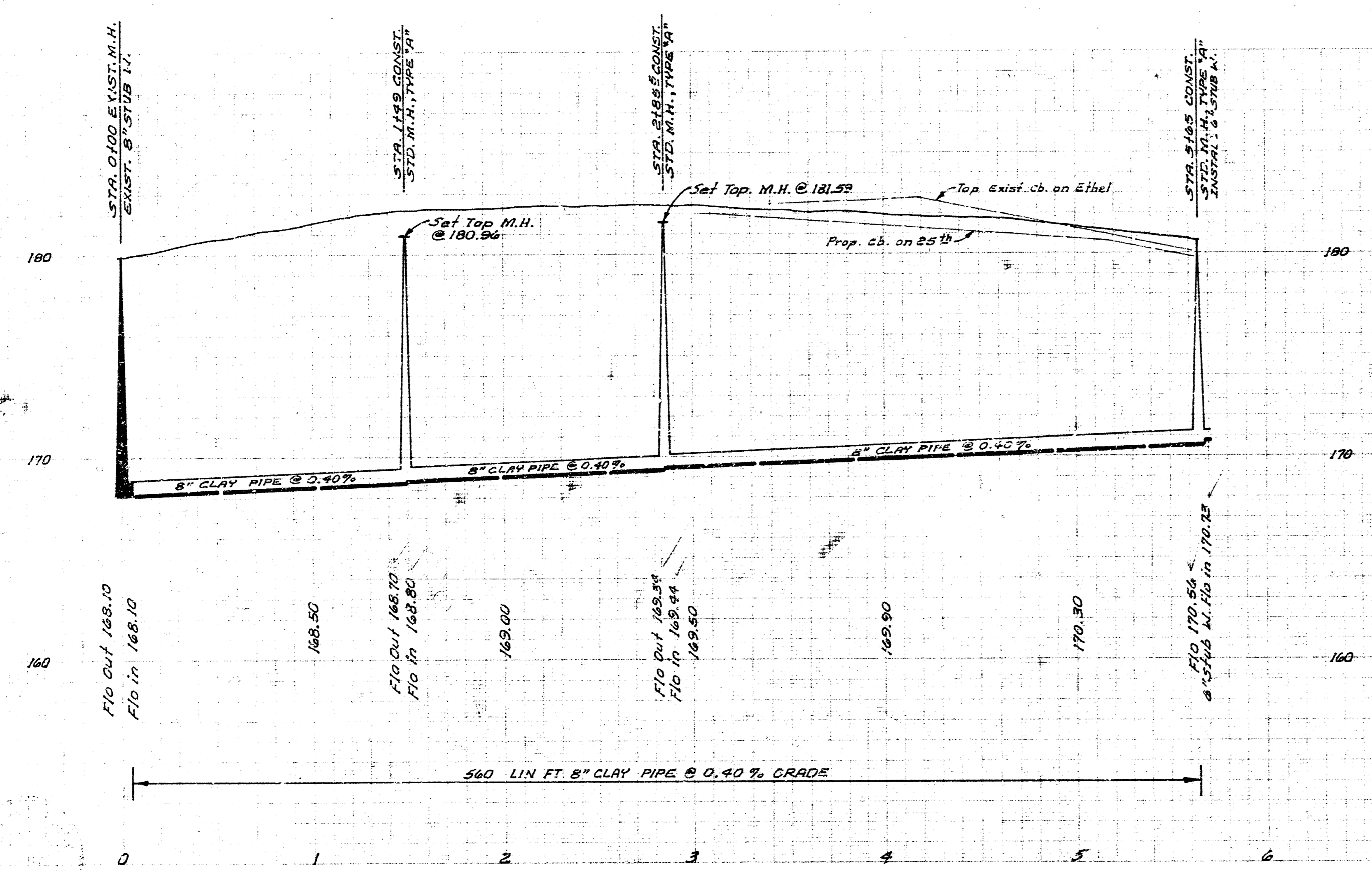


D. Chamber
 City Engineer

B.M. 180.35 "R" in Ritchie S. curb of 25th St. N. @ W. line of Oliver.
 B.M. 176.22 N. Rim M.H. 24' E. & 10' N. of S.E. Cor. of 25th St. N. & Battin St.



Plan Scale 1"=40'
 Profile Scale 1"=40' Hor.
 1"=4' Vert.



LAT. 1, SUB. 2, S.S. NO. 23
 CITY OF WICHITA, KANSAS
 R. W. LINN, CITY ENGINEER
 PROJ. NO. DBKL571003
 DATE: 4-29-71 MAY 1971