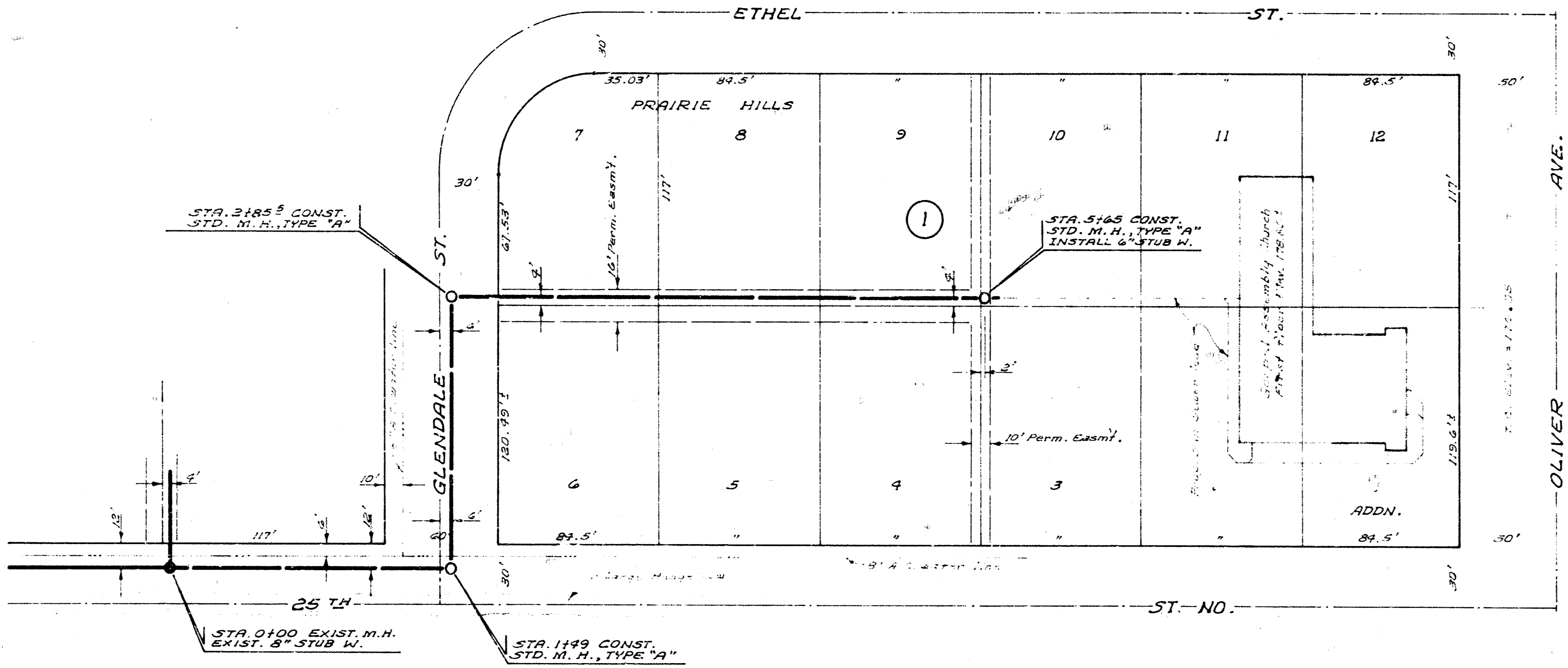
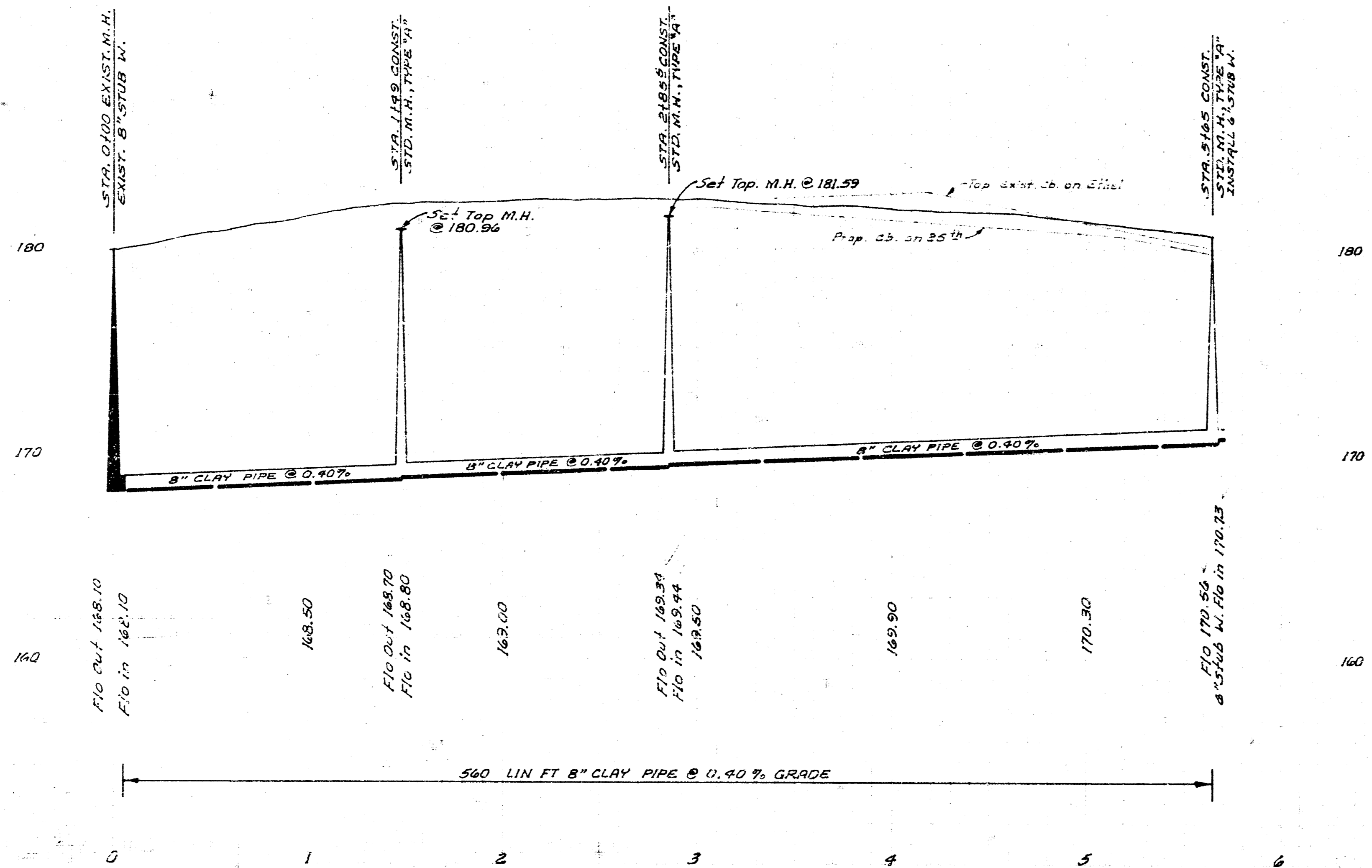


B.M. 180.55 "R" in Ritchie S. curb of 24th St. N. @ W. line of Oliver.
 B.M. 176.22 N. Rim M.H. 26' E. & 10' N. of S.E. cor. of 25th St. N. & Patton St.



Plan Scale 1"=30'
 Profile Scale 1"=40' Hor.
 1"=4' Vert.



LAT. 1, SUB. 2, S.S. NO. 23
 CITY OF WICHITA, KANSAS
 R. W. LINN, CITY ENGINEER
 PROJ. NO. DBKLS71003
 DATE: 4-29-71