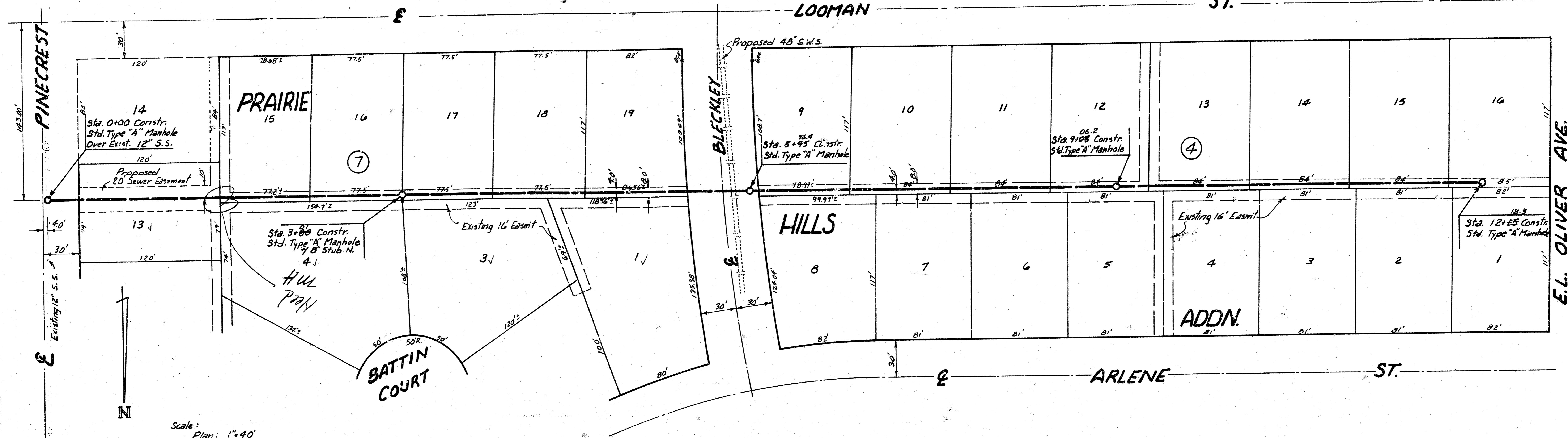
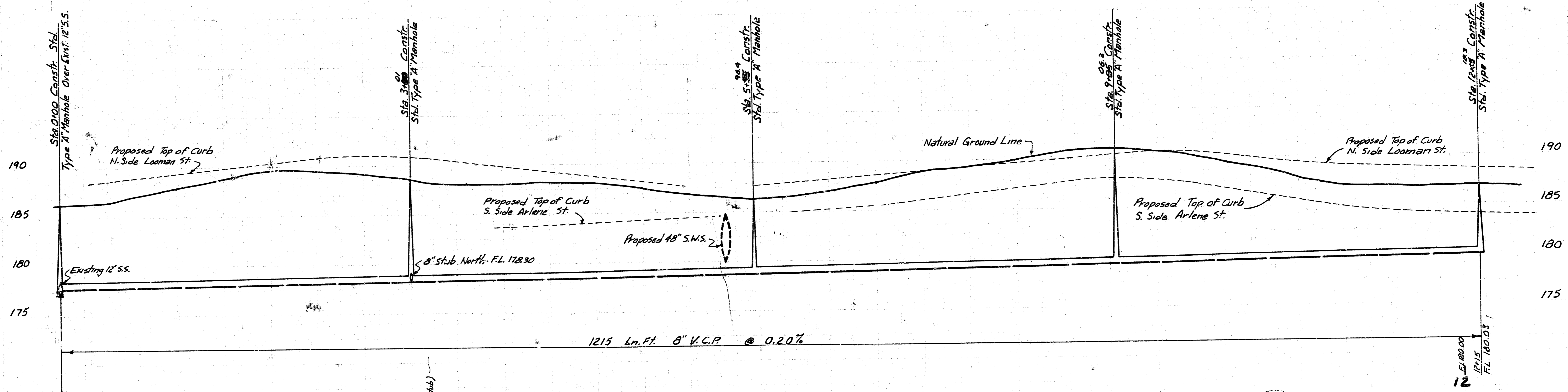


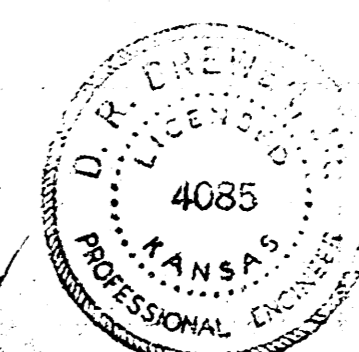
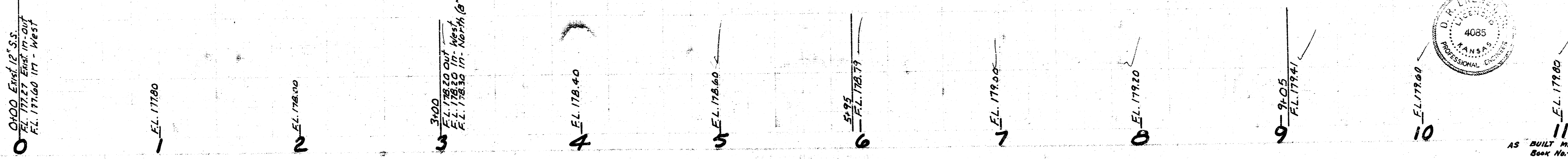
BM=174.49 - City Std. 44' W. of E. Oliver Ave. + 32' N. of E.A.C. Point W. on 25th St. N.  
 BM=183.79 - 2" cut Top Curb W.S. Oliver, 1st. curb st. N. of S.L. Arlene ext.  
 BM=186.33 - S.W. Corner Conc. Parch. Ho. at 4914 E. 24th St. N.



Scale:  
 Plan: 1"=40'  
 Profile: Horiz.: 1"=40'  
 Vert.: 1"=5'



1215 km. Ft. 8" V.C.P. @ 0.20%



**LAT. 4, MAIN 2, S.S.#23**  
 CITY OF WICHITA, KANSAS  
 R.W. Linn - City Engineer  
 Date: May 1974  
 Proj. No. DBKL574021

AS BUILT MEASUREMENTS  
 Book No. - I.H.-02

H. Eng'rs  
 J. J. Jester

FILMED FROM THE BEST