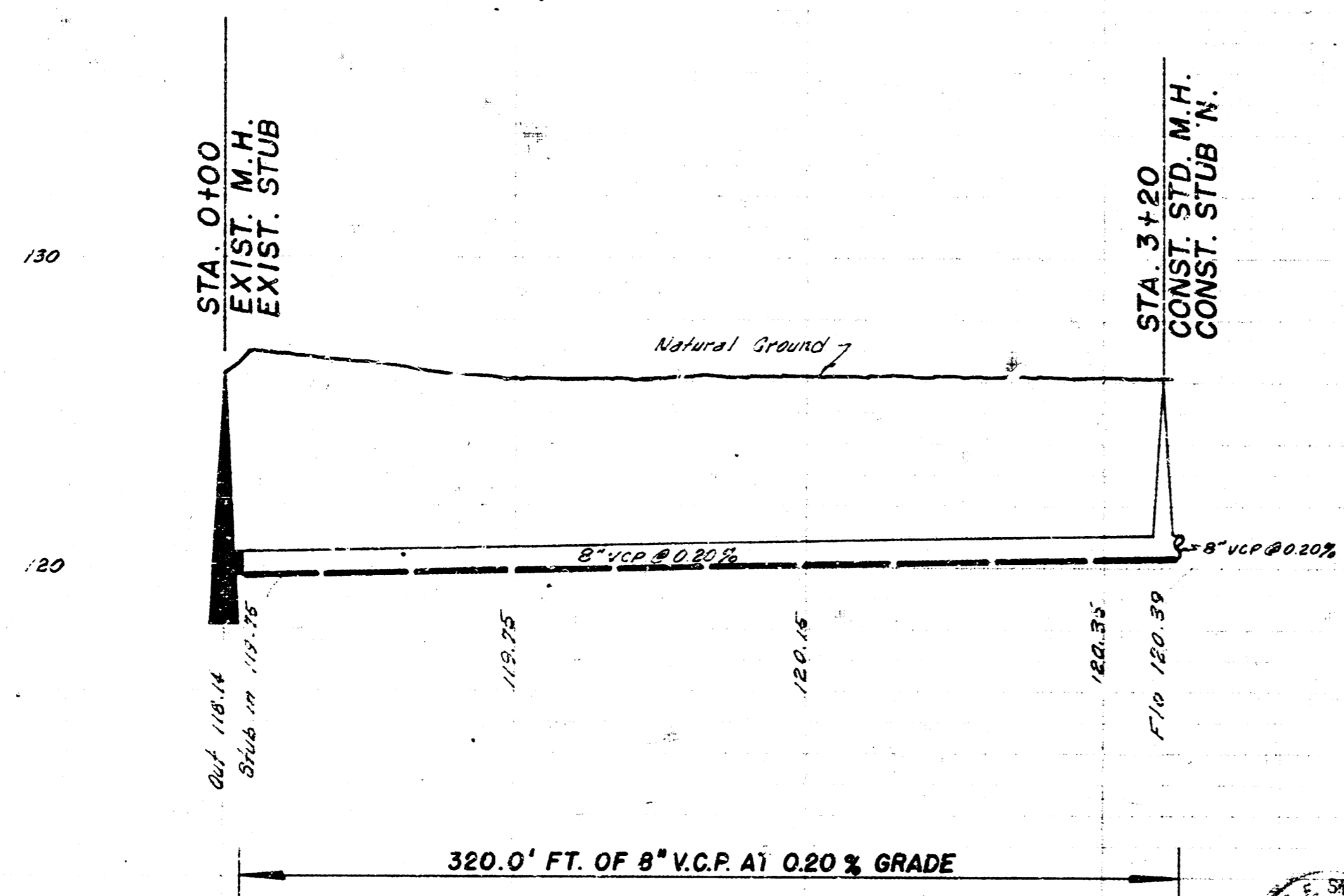
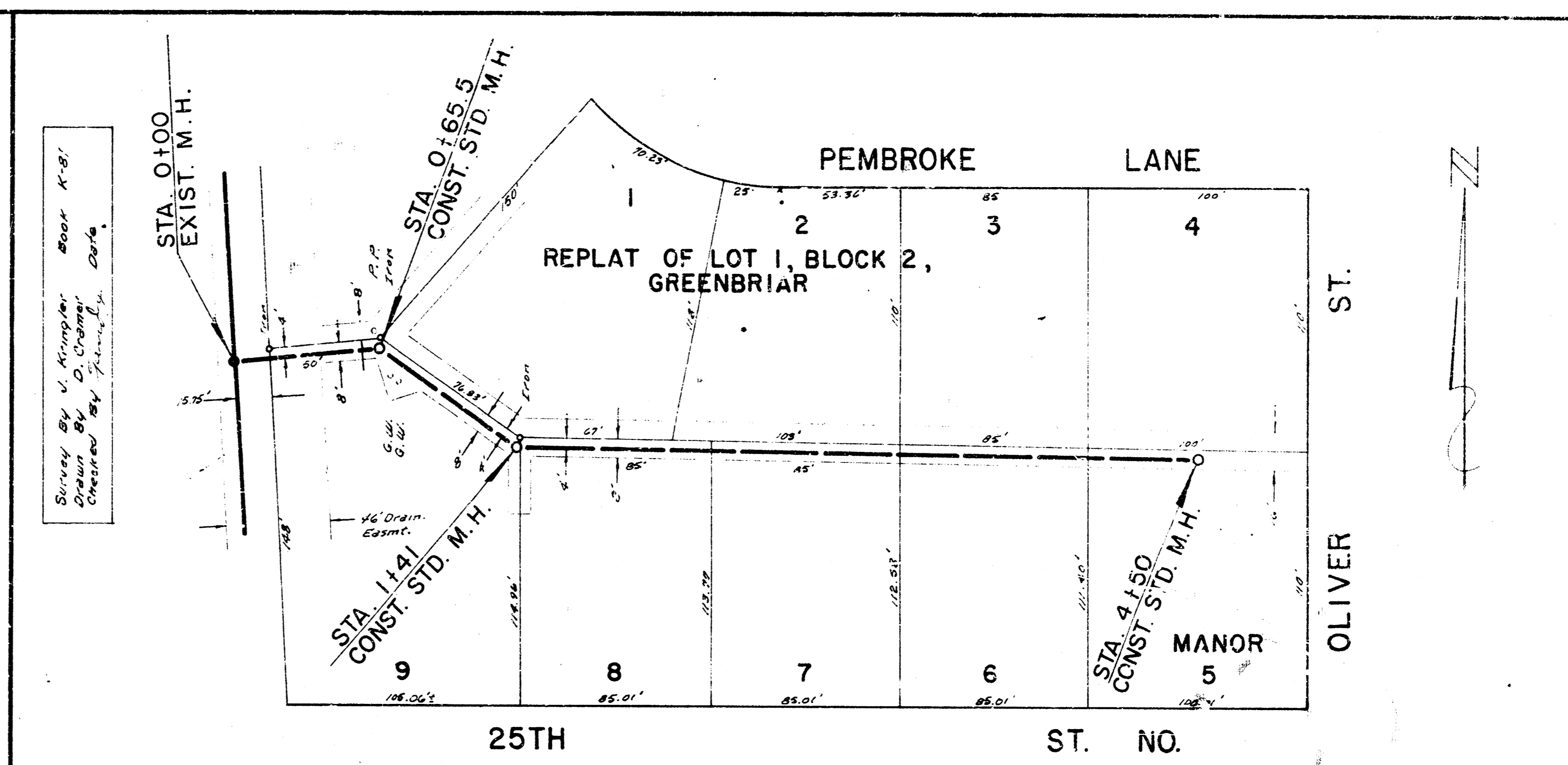


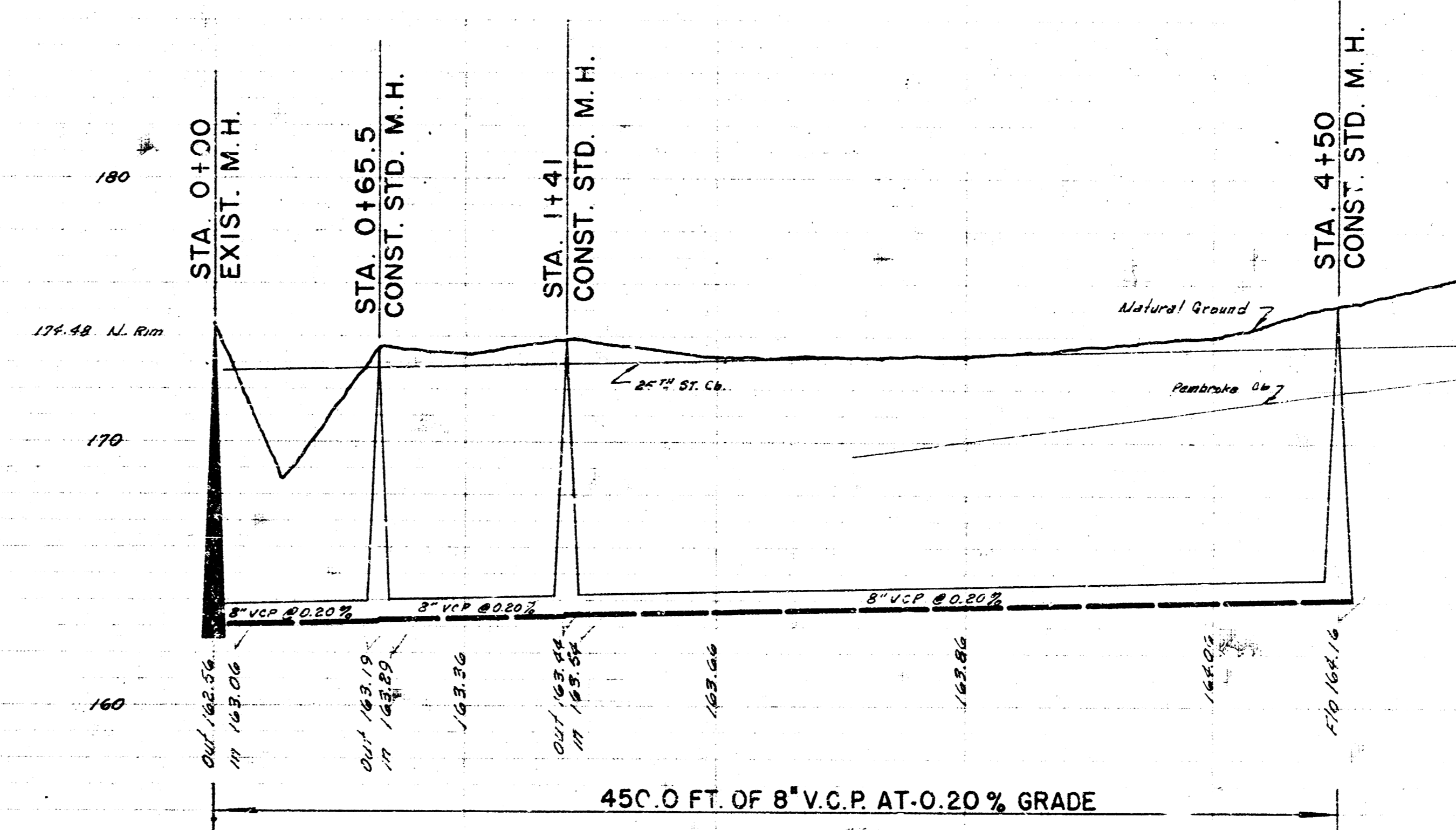
B.M. 128.42 SQ. HEAD SPIKE E.S. P. POLE 90' S. OF 15TH ST. E. E.S. WEST.



LAT. 172, SUB. 5, S.S. NO. 22
CITY OF WICHITA, KANSAS
B.E. SMITH, CITY ENGINEER
PROJ. NO. C22-44 DATE



B.M. 175.23 CITY OF WICHITA BENCH MARK DISK 52' S. 25TH 43' W. OF OLIVER



LAT. 17, SUB. 2, S.S. NO. 22
CITY OF WICHITA, KANSAS
B.E. SMITH, CITY ENGINEER
PROJ. NO. C23-33 DATE MAY 1963