

B.M. 129.10 Std. S.E. 29th & Arkansas.
 B.M. 134.51 S. E. cor. conc. walk of
 Bldg. NW 30th & Arkansas.

Note: Replace asphalt seal on
 Twenty-Ninth Street with
 2" asphalt.

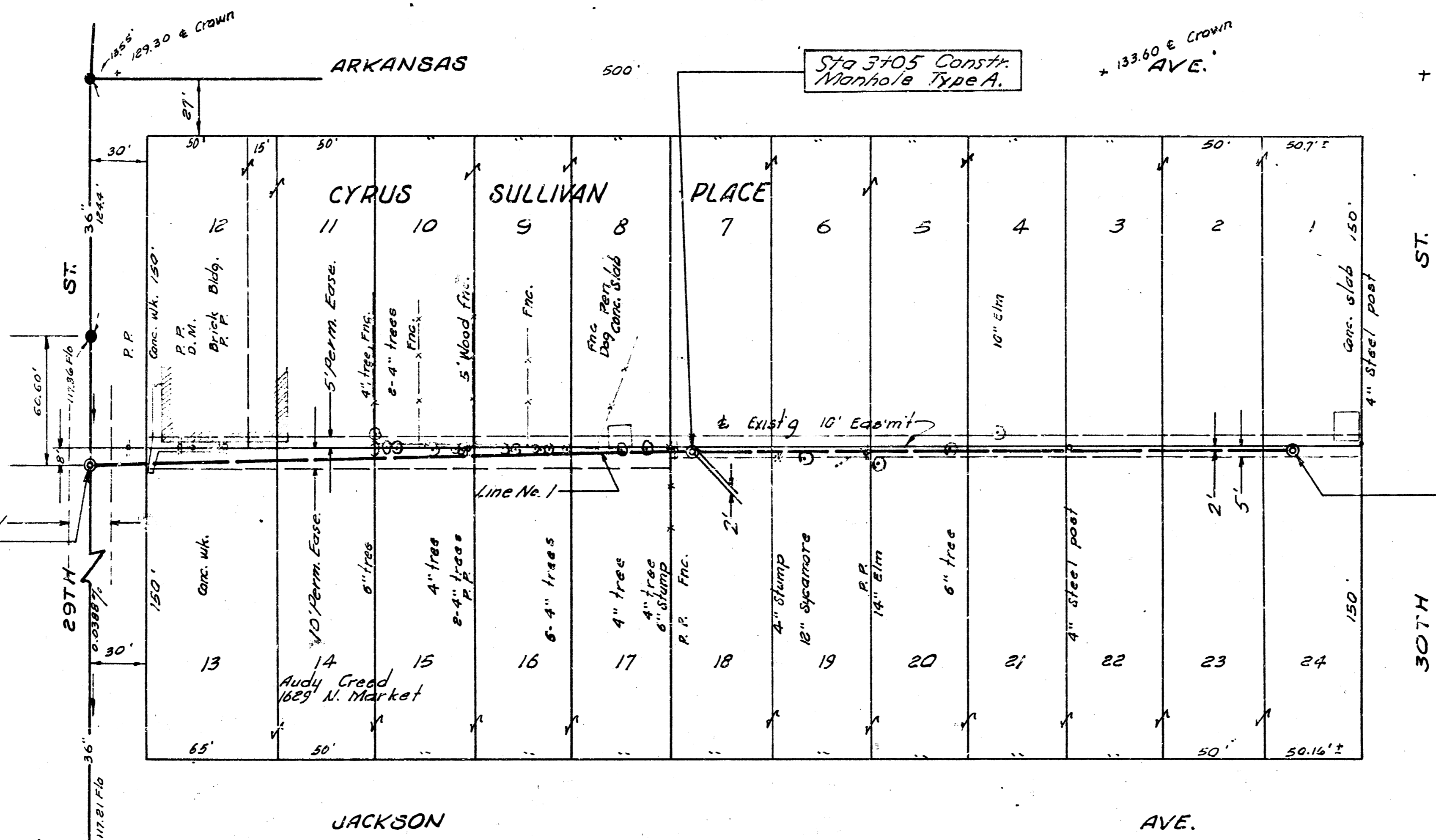
Sta 0+00 Const.
 Manhole Type B
 on Exist. 36" Sewer.

Asphalt Seal

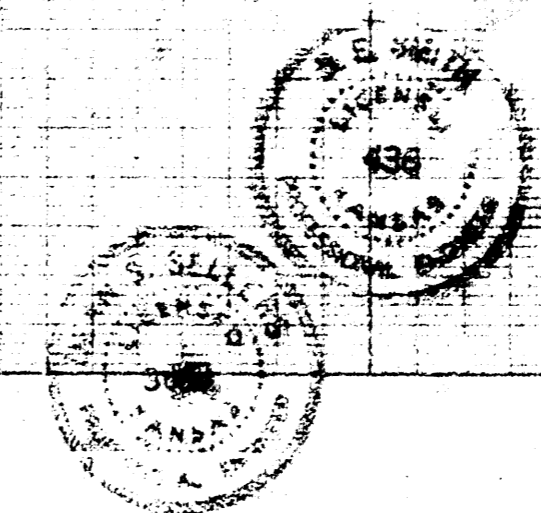
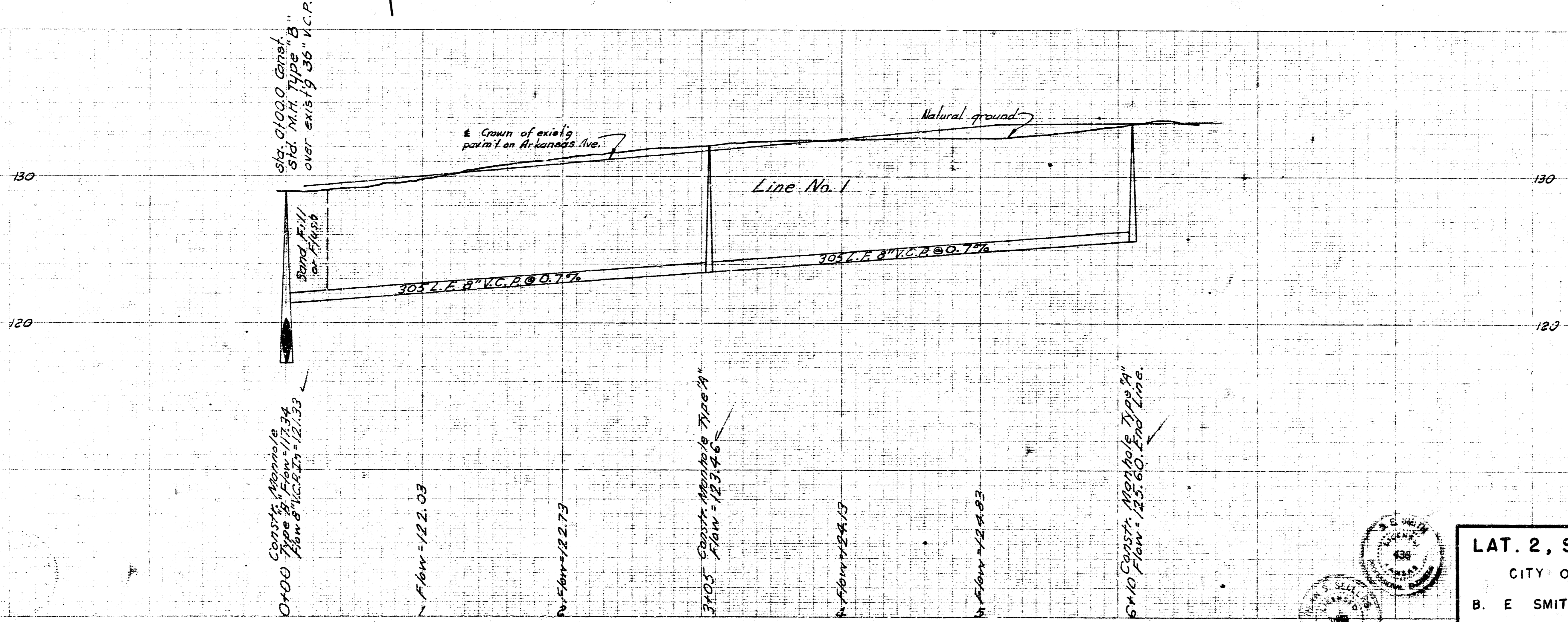
Sta 3+05 Const.
 Manhole Type A.

Sta 6+10 Const.
 Manhole Type A.
 End Line No. 1.

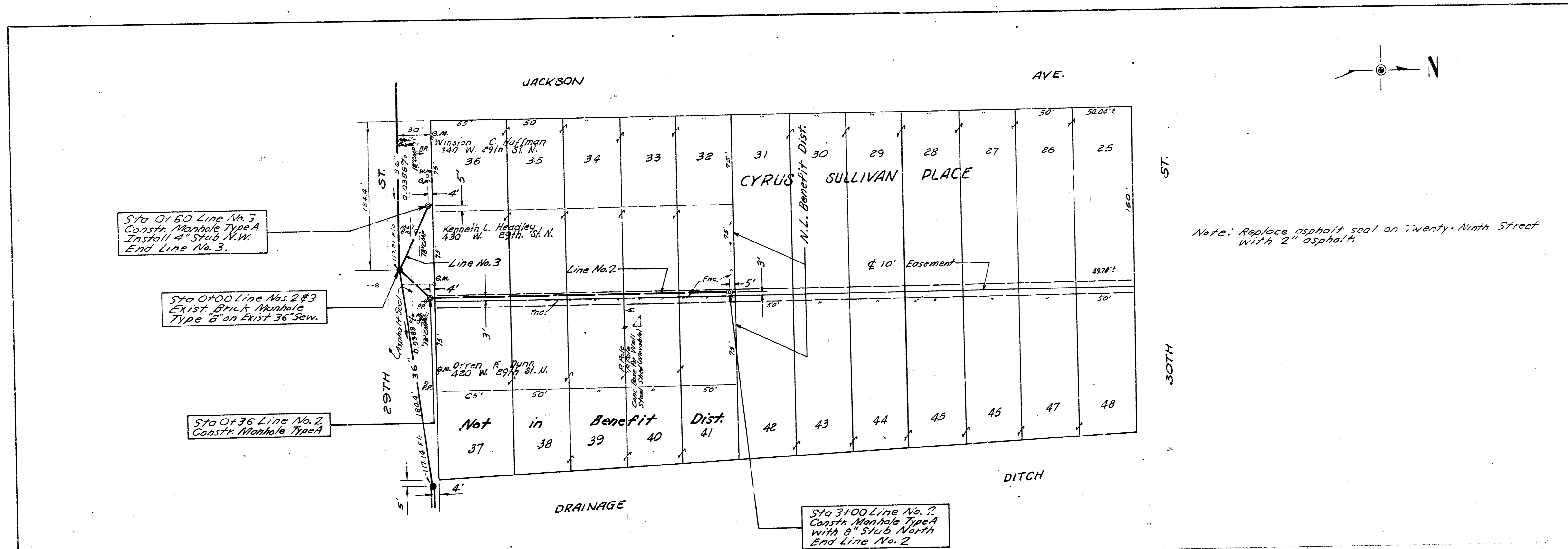
Survey by G.W. Packer
 BK No. 220-Y, 228-Y



Plan Scale 1" = 40'
 Profile Scale 1" = 4' Vert.

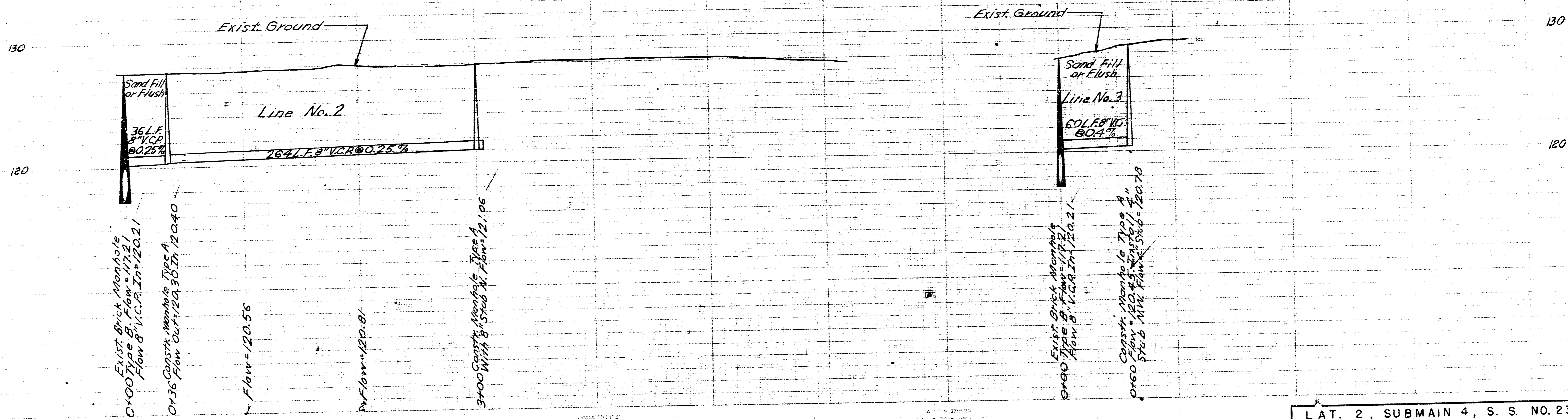


LAT. 2, SUBMAIN 4, S. S. NO. 23
 CITY OF WICHITA, KANSAS
 B. E. SMITH CITY ENGINEER
 JAN. 1968 PROJECT NO. C23-54
 SHEET NO. 1 OF 2



Note: Replace asphalt seal on Twenty-Ninth Street with 2" asphalt.

Plan Scale 1"=40'
Profile Scale Hor. 1"=40' Vert. 1"=4'



LAT. 2, SUBMAIN 4, S. S. NO. 23
PROJECT NO. C23-54
SHEET NO. 2 OF 2

141 (S)