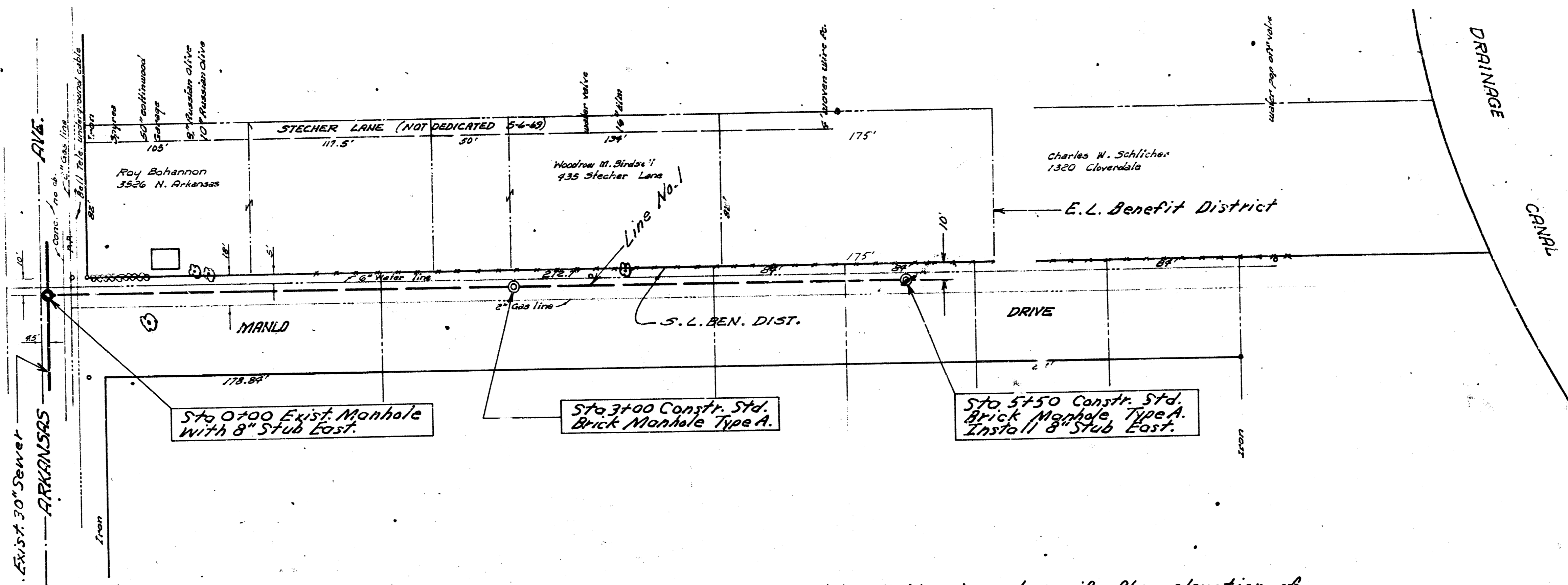


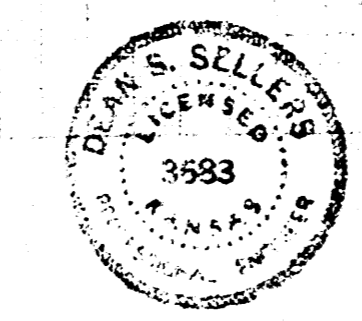
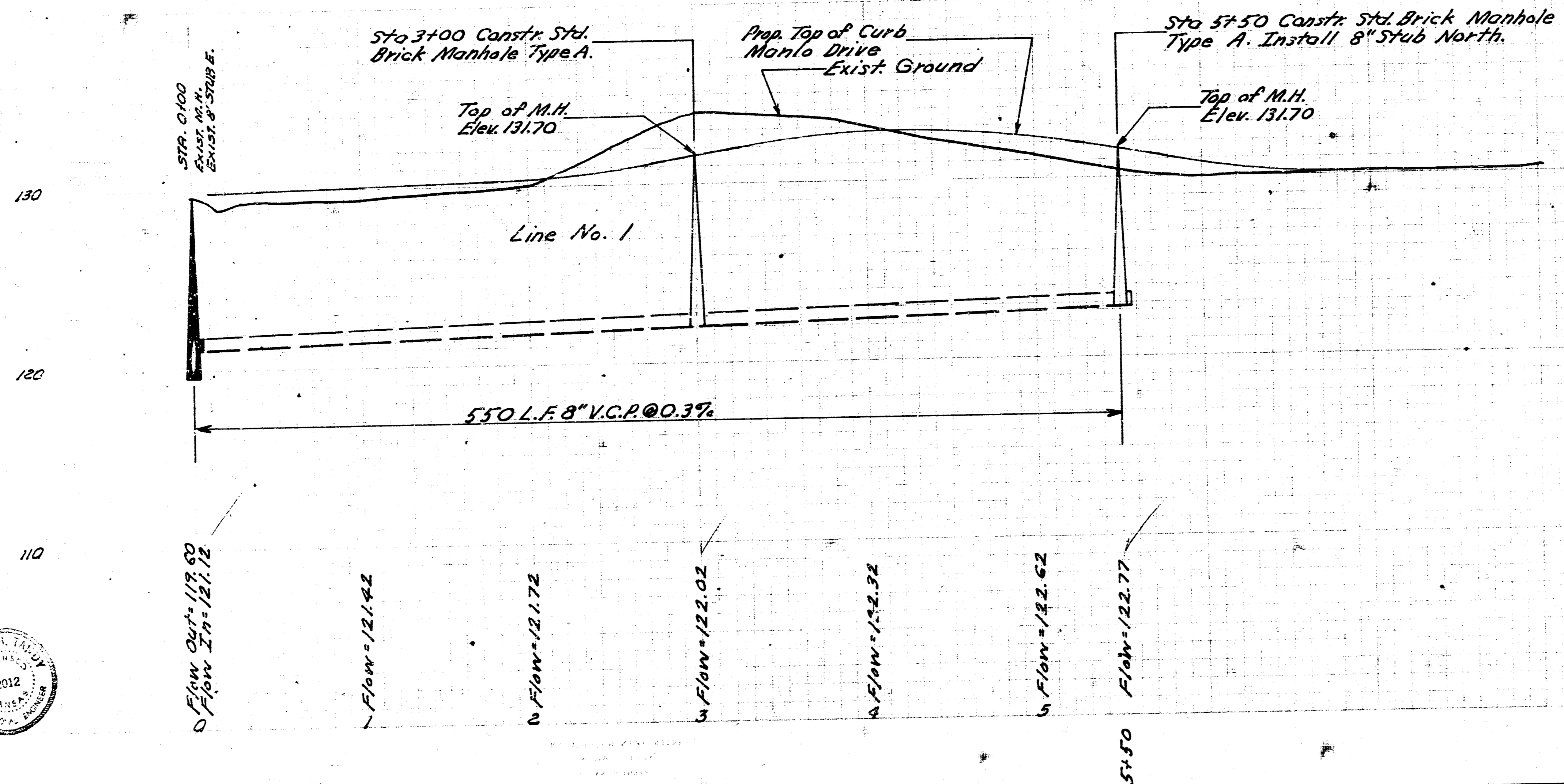
W. P. P. 1970  
 P. 1. 1. 1.  
 2012  
 2012



B. M. 130.06 R.R. Spike W.S.P.P. S.W. cor. 35th & Arkansas  
 B. M. 133.98 N.V.I. cor. conc. po. No. 517 Manlio Dr.

Note: Field engineer to verify flow elevation of existing 8" stub prior to staking project.

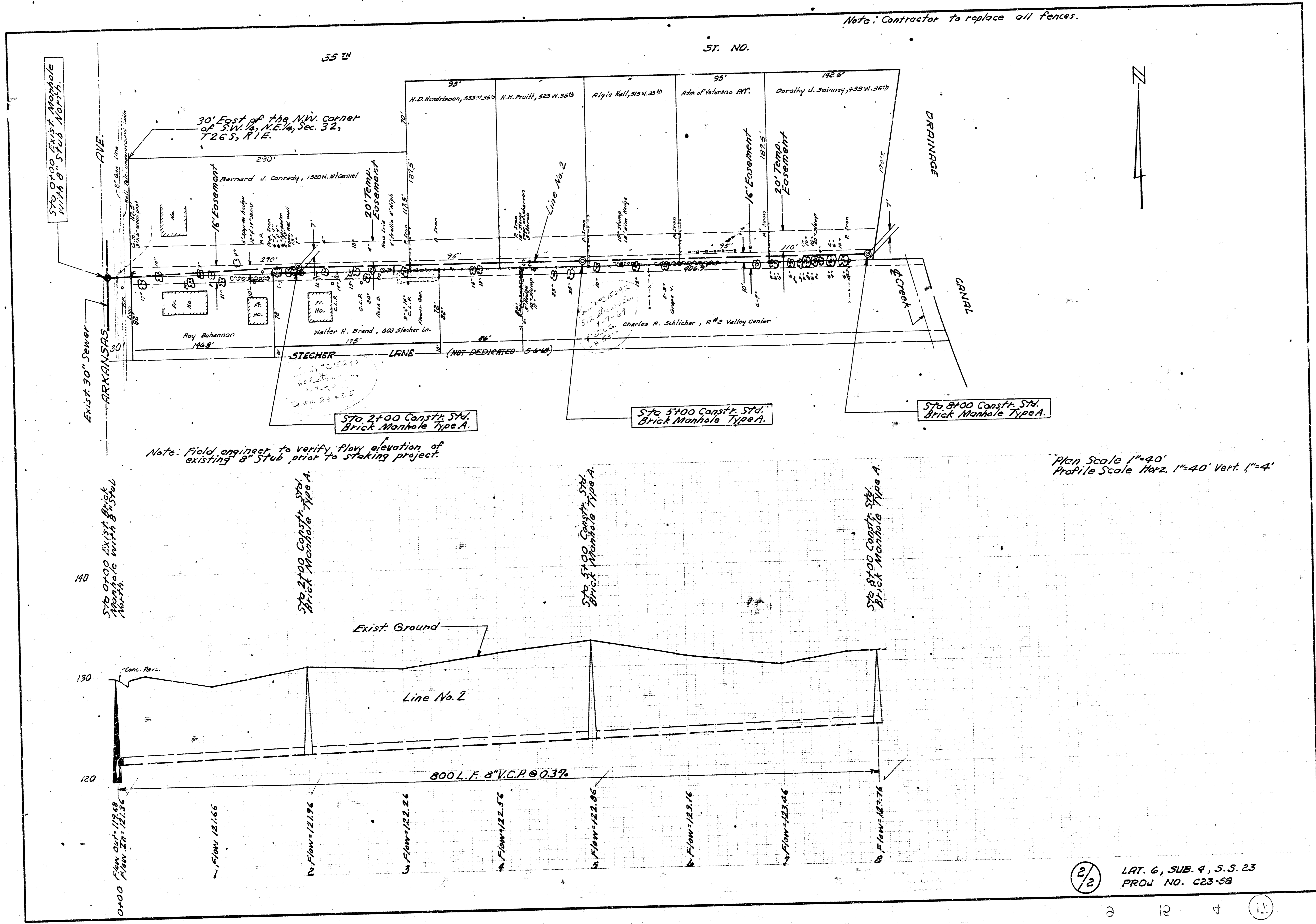
Plan Scale 1"=40'  
 Profile Scale 1"=40' Hor.  
 1"=4' Vert.



1/2

LAT. 6, SUB. 4, S. S. NO. 23  
 CITY OF WICHITA, KANSAS  
 B.E. SMITH, CITY ENGINEER  
 PROJ. NO. C23-58  
 DATE: MAY 1969

Note: Contractor to replace all fences.



Note: Field engineer to verify flow elevation of existing 8" stub prior to staking project.

Plan Scale 1"=40'  
Profile Scale Horiz. 1"=40' Vert. 1"=4'

2/2

LAT. 6, SUB. 4, S.S. 23  
PROJ. NO. C23-58

2 12 4 11