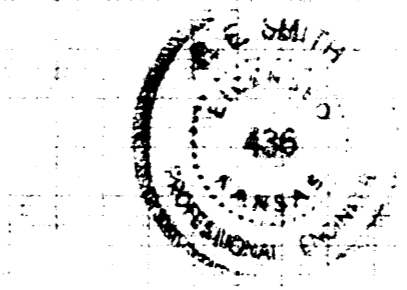


Checked by J. E. ...  
 B. M. No. 129-24

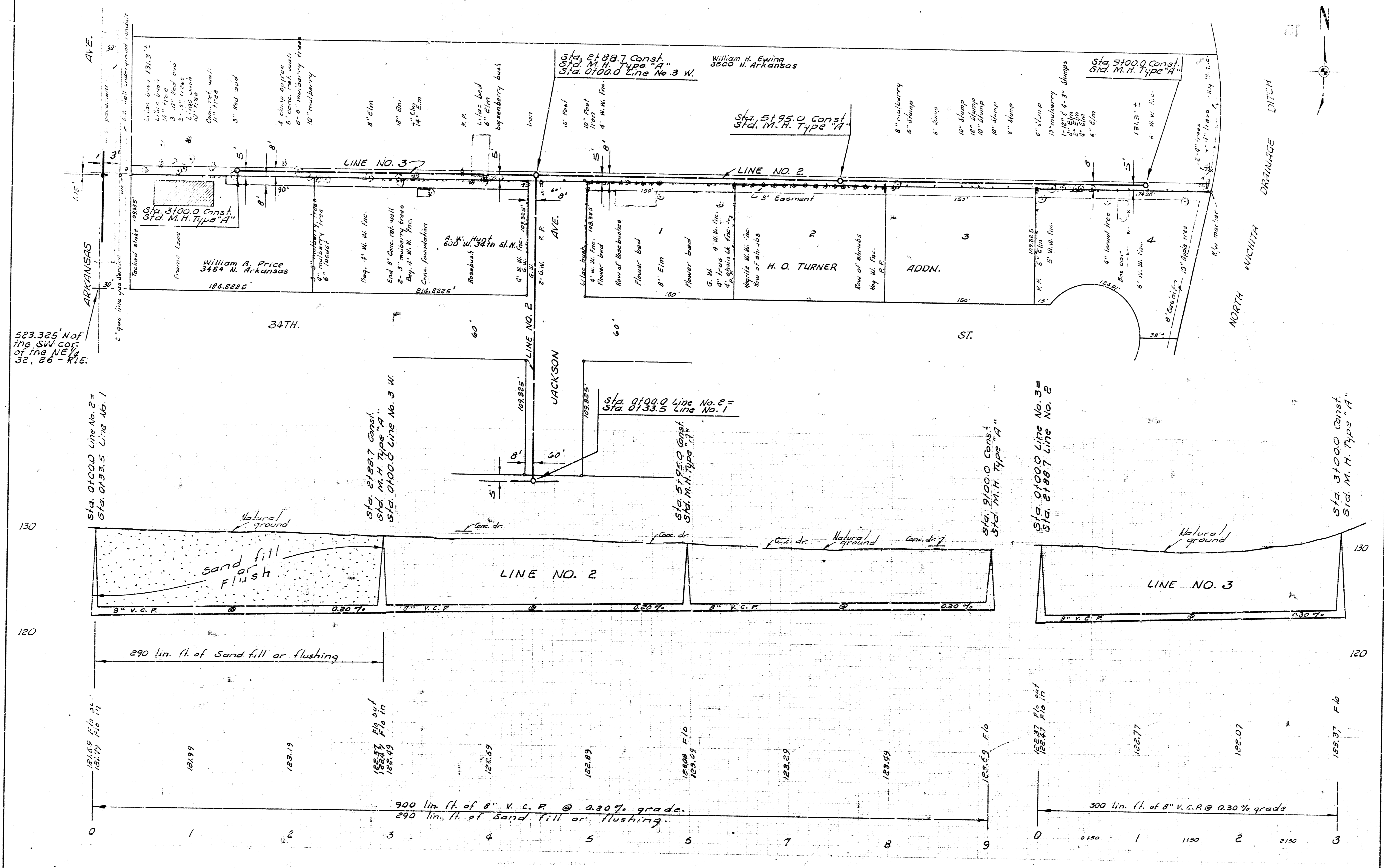
B. M. 129.908 City S.M. disc. S.E. 33rd St.  
 and Arkansas Ave.  
  
 B. M. 129.72 "a" cut E. end radius N.E. c.  
 34th St. and Arkansas Ave.

Plan Scale 1" = 40'  
 Profile Scale 1" = 40' Horiz.  
 1" = 4' Vert.

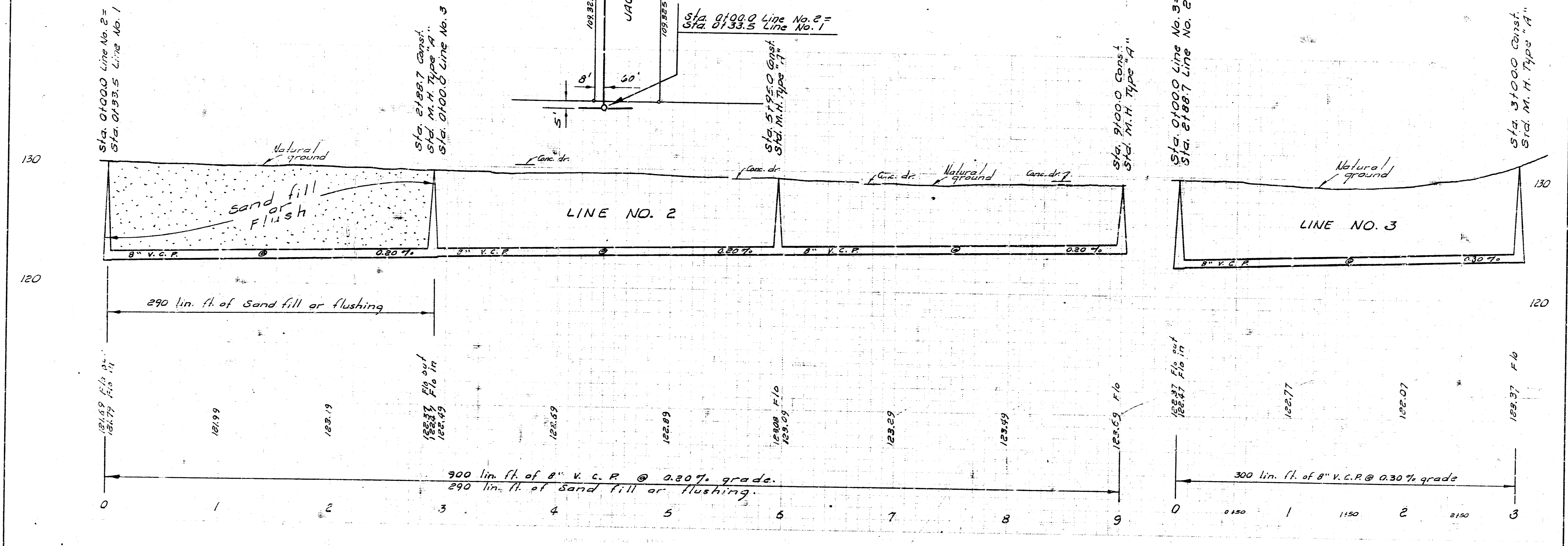
LAT. 13, SUBMAIN 4, S. S. NO. 23  
 CITY OF WICHITA, KANSAS  
 B. E. SMITH CITY ENGINEER  
 AUG. 1967 PROJECT NO. C 23-65  
 SHEET NO. 1 OF 2



S.W. 1/4 Sec. 33, T. 33 N., R. 33 W., disc. SE. 33rd of Arkansas.  
 S.W. 1/4 Sec. 34, T. 33 N., R. 33 W., disc. SE. 34th of Arkansas.  
 S.W. 1/4 Sec. 35, T. 33 N., R. 33 W., disc. SE. 35th of Arkansas.



523.325' Not  
 the SW cor.  
 of the NE 1/4  
 Sec. 36 - R.E.



LAT. 13, SUBMAIN 4, S. S. NO. 23  
 PROJECT NO. C23-65  
 SHEET NO. 2 OF 2