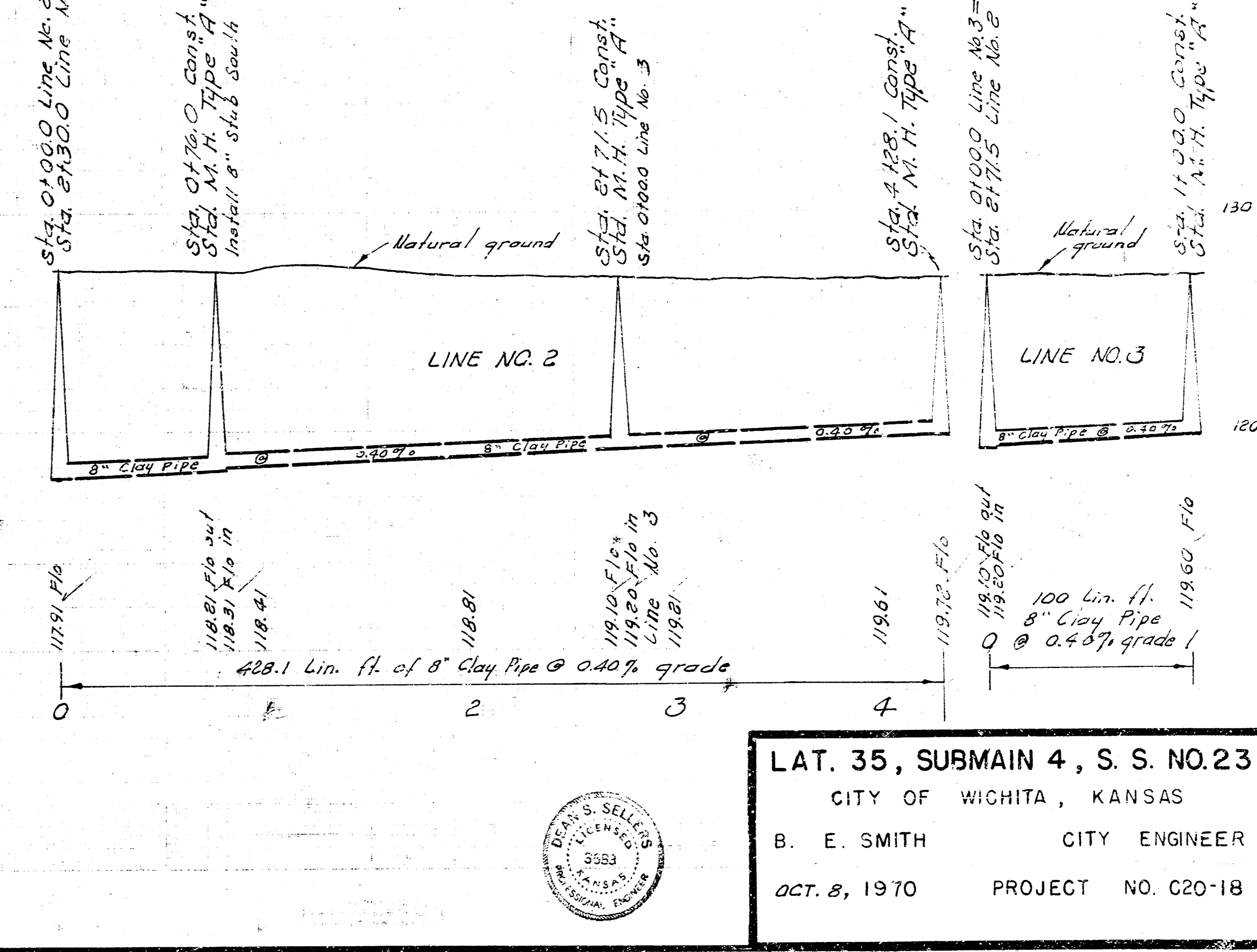
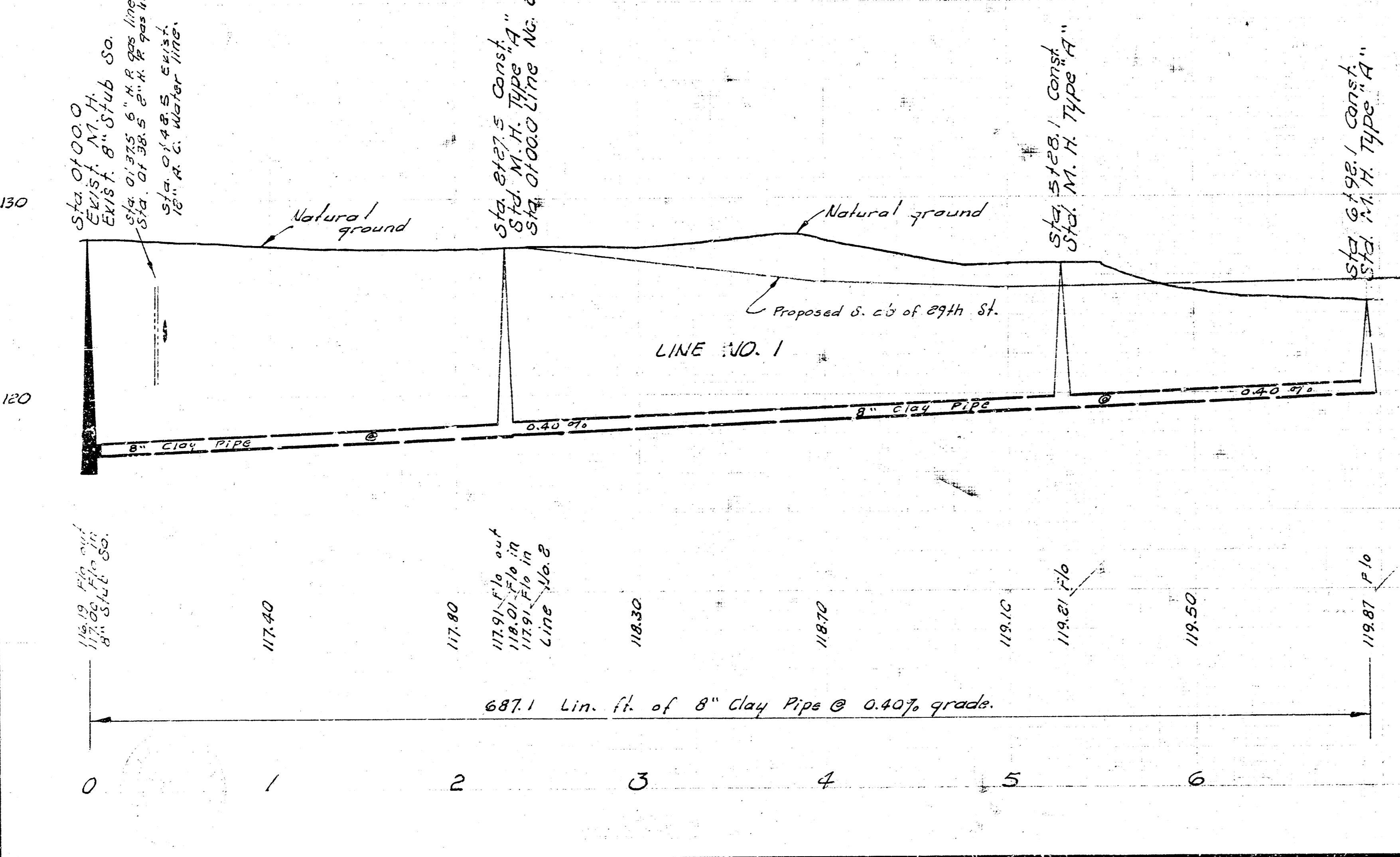
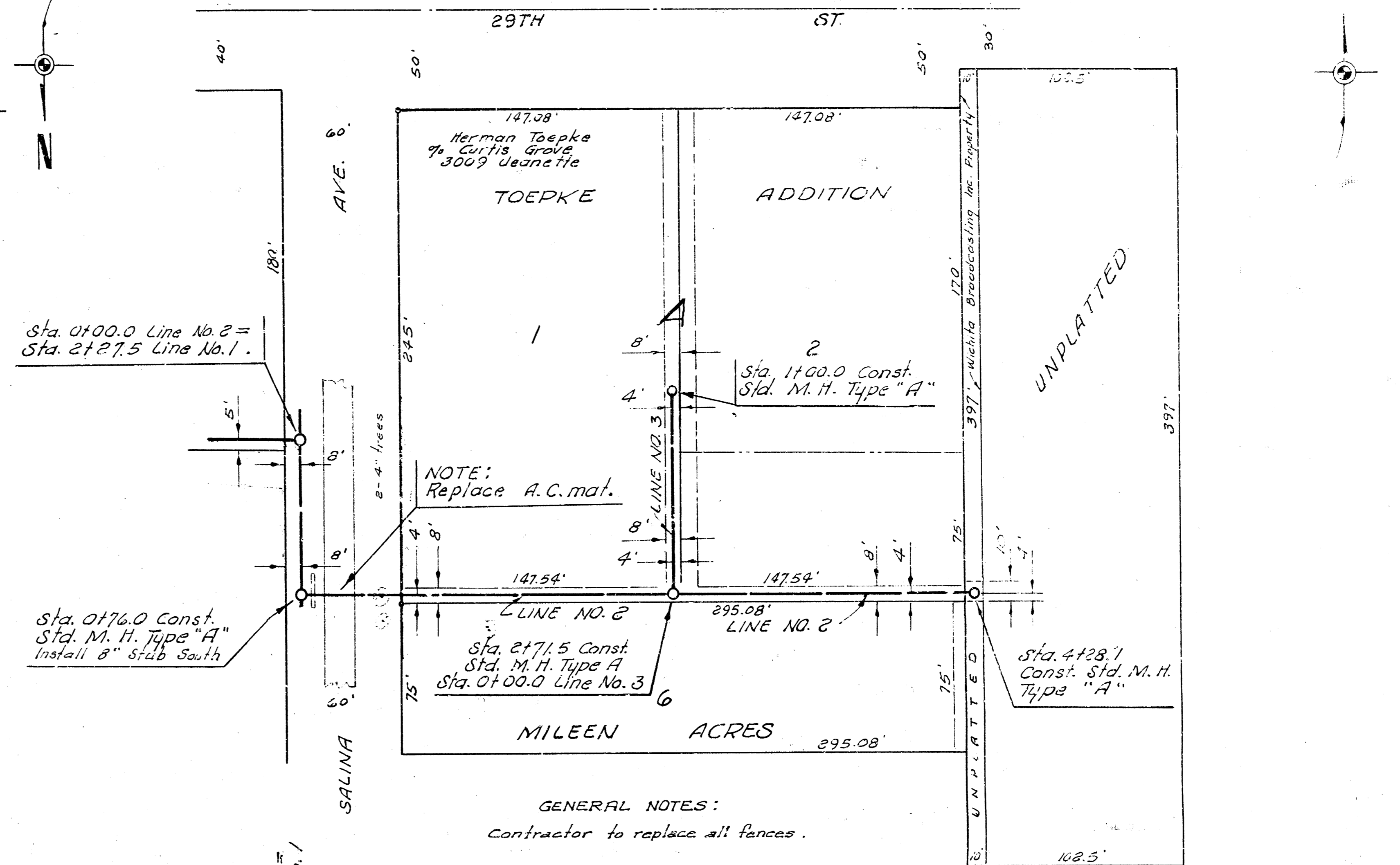
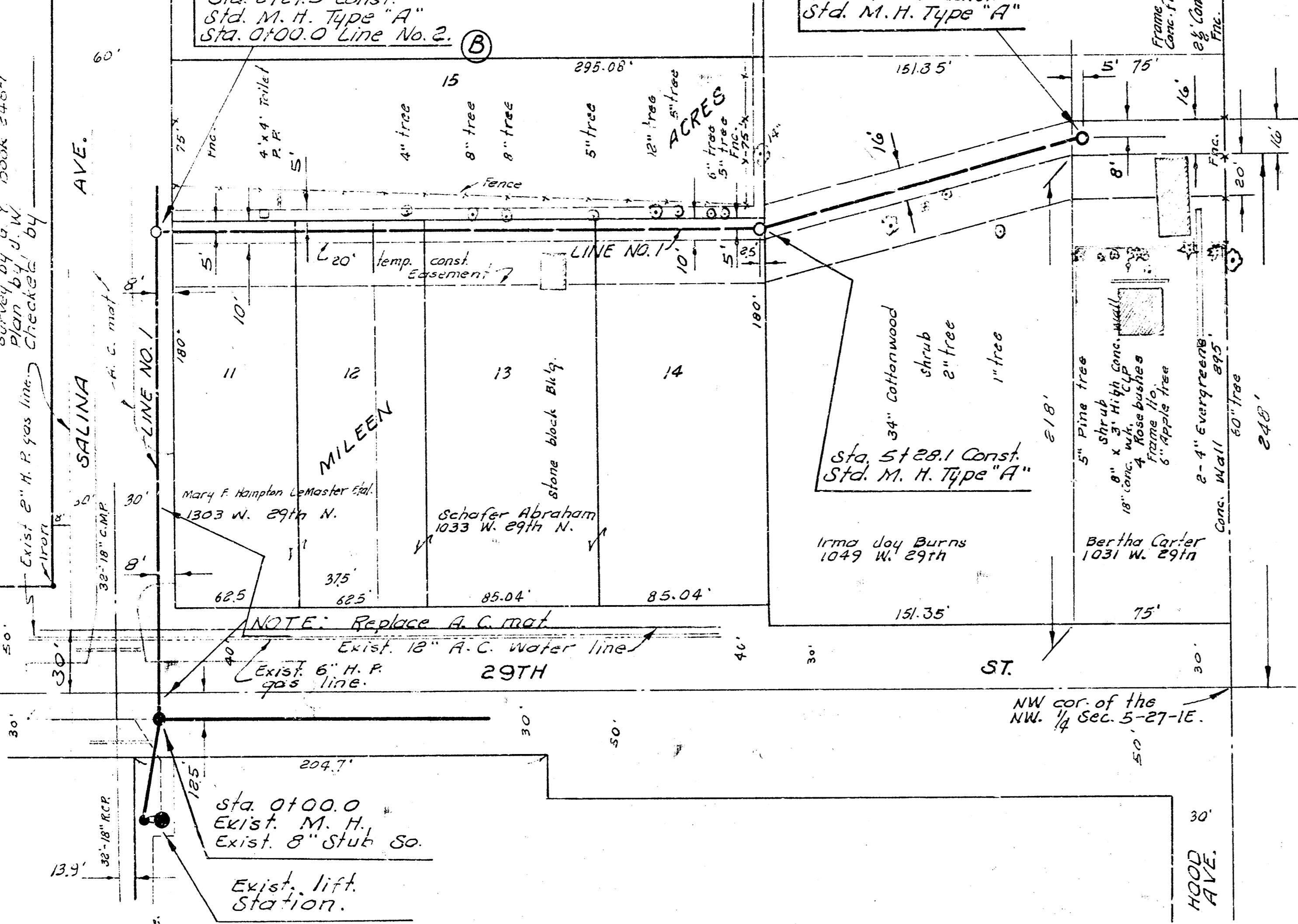


B. M. 129.14 NW cor. conc. base brick sign "All Pels Hospital"
 300' E. of Salina on S. S. 29th St. No.

Plan Scale 1" = 40'
 Profile Scale 1" = 40' Vert.



LAT. 35, SUBMAIN 4, S. S. NO. 23
 CITY OF WICHITA, KANSAS
 B. E. SMITH CITY ENGINEER
 OCT. 8, 1970 PROJECT NO. C20-18

