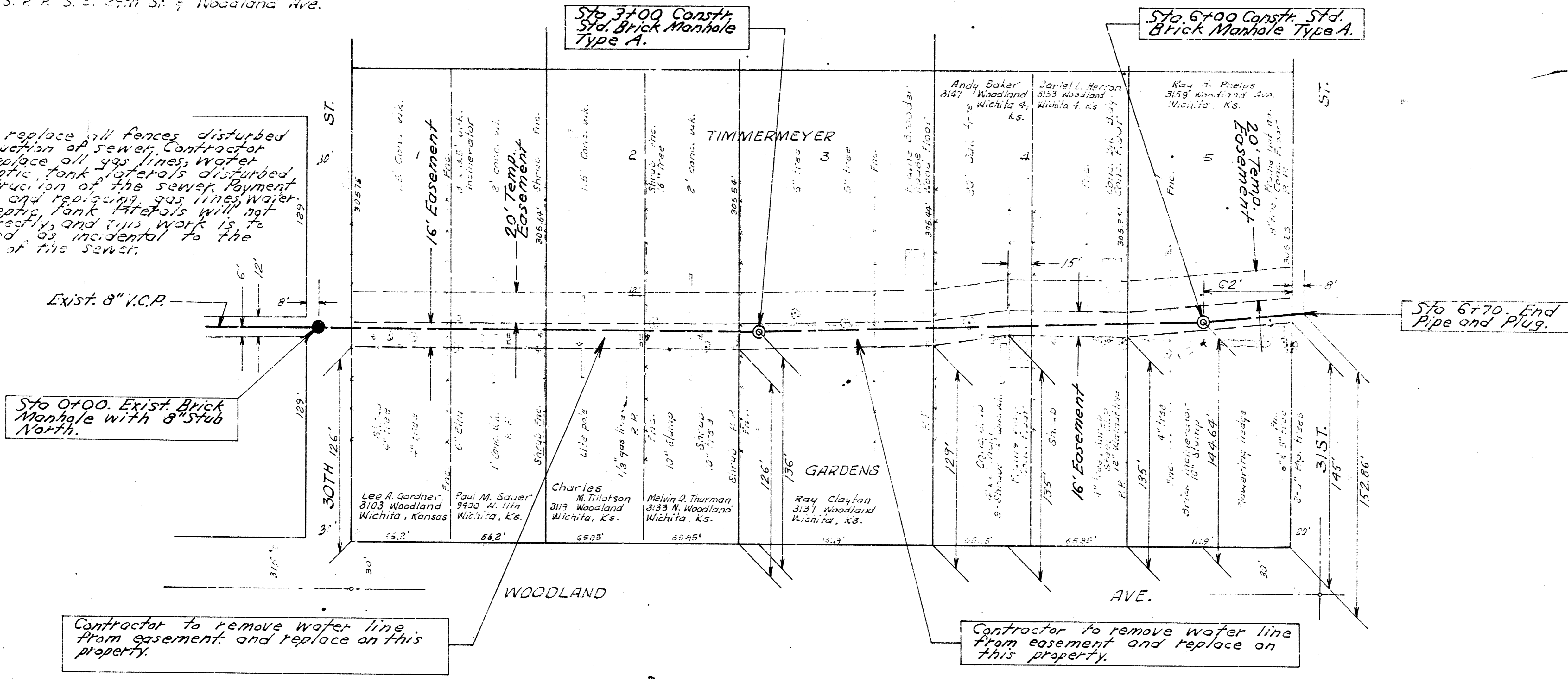


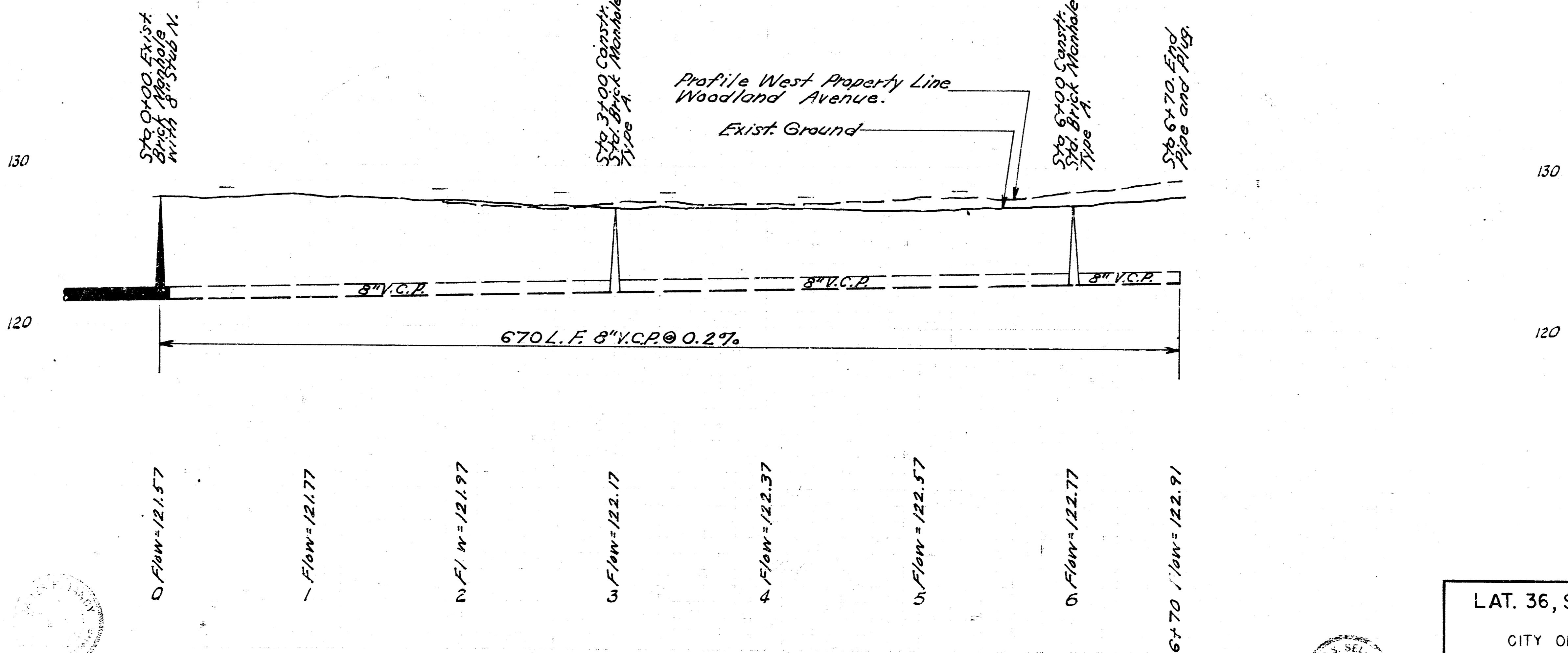
B.M. 128.00 (V.I.) S.P.R. S.E. 25th St. f Woodland Ave.

Note: Contractor to replace all fences disturbed during construction of sewer. Contractor shall also replace all gas lines, water lines, and septic tank laterals disturbed during construction of the sewer. Payment for removing and replacing gas lines, water lines, and septic tank laterals will not be made directly, and this work is to be considered as incidental to the construction of the sewer.



Contractor to remove water line from easement and replace on this property.

Contractor to remove water line from easement and replace on this property.



0 Flow = 121.57
 1 Flow = 121.77
 2 Flow = 121.97
 3 Flow = 122.17
 4 Flow = 122.37
 5 Flow = 122.57
 6 Flow = 122.77
 6+70 Flow = 122.91

Plan scale 1" = 40'
 Profile scale 1" = 10' vert.

LAT. 36, SUBMAIN 4, S. S. NO. 23
 CITY OF WICHITA, KANSAS
 B. E. SMITH CITY ENGINEER
 JUNE 1969 PROJECT NO. C23-88