

Survey by J. Y. Sk 236-Y
 Plan by J. W. D. S. C.
 Checked by J. W. D. S. C.

Plan scale 1" = 40'
 Profile scale 1" = 40' Horiz.
 1" = 40' Vert.

NOTE: TO CONTRACTOR
 Replace all fences.
 Removal of grape arbor to be incidental to the proj.

LAT. 54, SUBMAIN 4, S. S. NO. 23
 City of Wichita, Kansas
 B. E. SMITH CITY ENGINEER
 JAN. 1970 PROJECT NO. C25-44

Sta. 0100.0
 Exist. 8" M.H.
 Exist. 8" Stud W.

Sta. 1157.3 Const.
 Std. M.H. Type "A"

Sta. 3162.3 Const. Std. M.H. Type "A"
 Sta. 0100.0 For Line No. 3 No.

Sta. 6142.8 Const. Std. M.H. Type "A"

Sta. 2112.8 Const. Std. M.H. Type "A"

Sta. 8103.9 Const. Std. M.H. Type "A"
 Sta. 0100.0 For Line No. 2 west.

Sta. 1170.0 Const. Std. M.H. Type "A"

B. M. 128.76 60" Spike S.W.S. 20" tree N.E. 32nd & Fairview.

Sta. 0100.0
 Exist. 8" M.H.
 Exist. 8" Stud W.

Sta. 1144.3 Exist. 8" H.P. gas line
 Sta. 1144.3 Exist. 6" Water line
 Sta. 1157.3 Const. Std. M.H. Type "A"

Sta. 6112.8 Const. Std. M.H. Type "A"

Sta. 3162.3 Const. Std. M.H. Type "A"
 Sta. 0100.0 For Line No. 3 No.

Sta. 6142.8 Const. Std. M.H. Type "A"
 Sta. 6142.8 Exist. 8" H.P. gas line.

Sta. 8103.9 Const. Std. M.H. Type "A"
 Sta. 0100.0 For Line No. 2

Sta. 10147.9 Const. Std. M.H. Type "A"

Sta. 11179.0 Const. Std. M.H. Type "A"

Sta. 0100.0 For Line No. 2
 Sta. 8103.9 For Line No. 1

Sta. 1100.0 Const. Std. M.H. Type "A"

Sta. 0100.0
 Exist. 8" M.H.
 Exist. 8" Stud W.

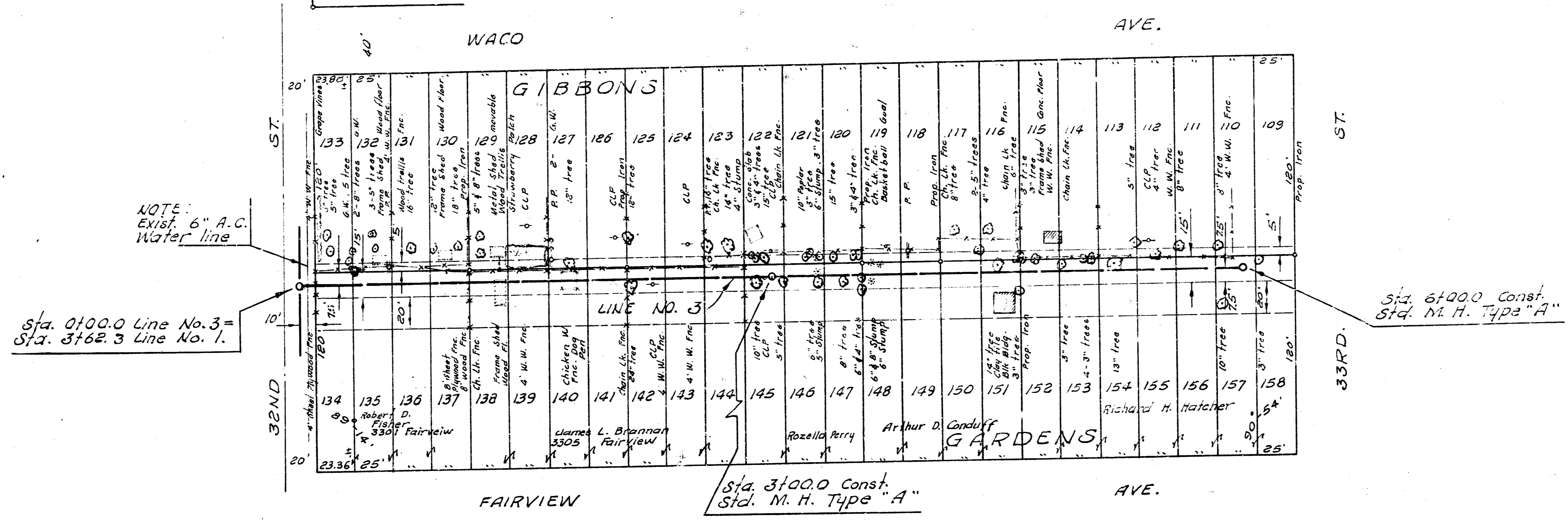
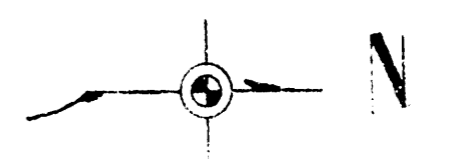
122.61
 122.62
 122.63
 122.64
 122.65
 122.66
 122.67
 122.68
 122.69
 122.70
 122.71
 122.72
 122.73
 122.74
 122.75
 122.76
 122.77
 122.78
 122.79
 122.80
 122.81
 122.82
 122.83
 122.84
 122.85
 122.86
 122.87
 122.88
 122.89
 122.90
 122.91
 122.92
 122.93
 122.94
 122.95
 122.96
 122.97
 122.98
 122.99
 123.00

1037.30 lin. ft. of 8" clay pipe @ 0.15% grade

100 lin. ft. 8" Clay Pipe @ 0.30% GRADE



Bk. No. D. E. S. No. 1
 B. M. 129.91 City Standard S. C. cor.
 Arkansas and 33rd St. North.

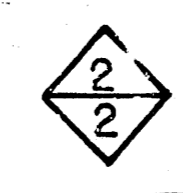
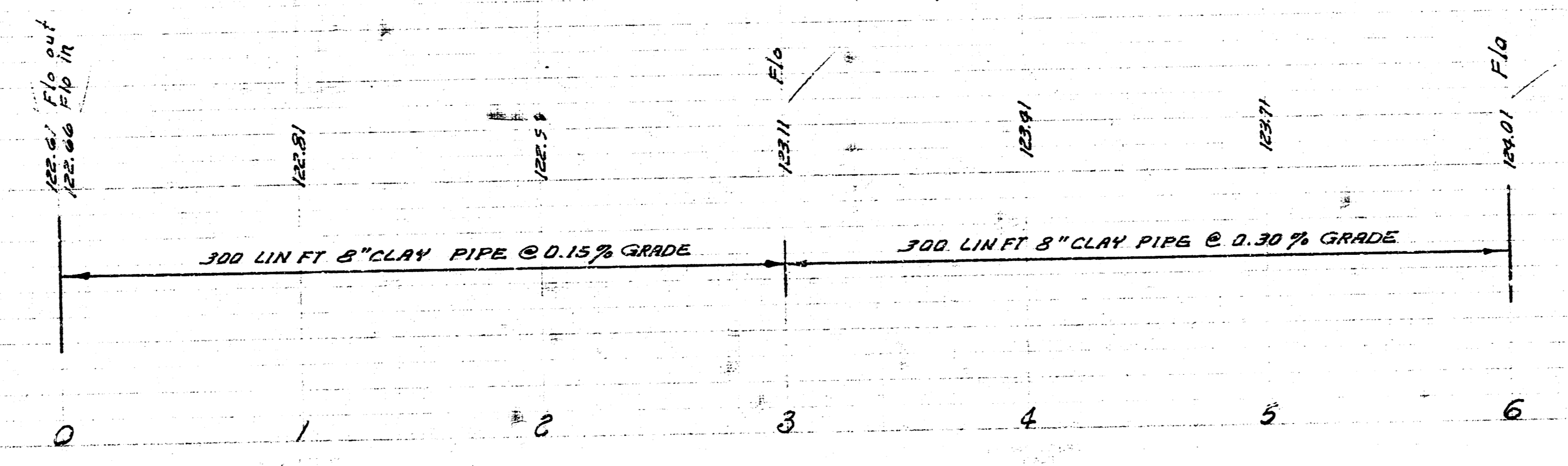
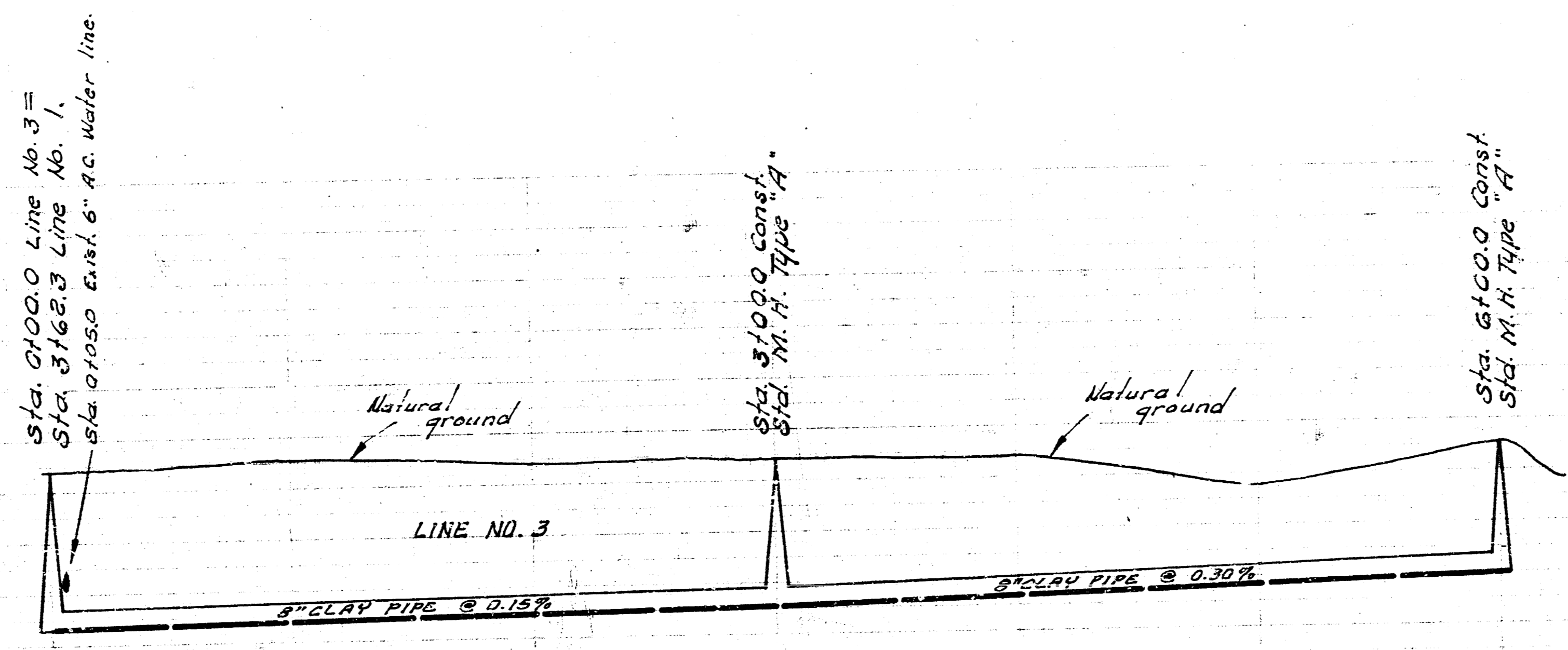


NOTE:
 Exist. 6" A.C.
 Water line

Sta. 0+00.0 Line No. 3 =
 Sta. 3+62.3 Line No. 1.

Sta. 6+00.0 Const.
 Std. M. H. Type "A"

Sta. 3+00.0 Const.
 Std. M. H. Type "A"



LAT. 54, SUBMAIN 4, S. S. NO. 23
 PROJECT NO. C25-44

13 11